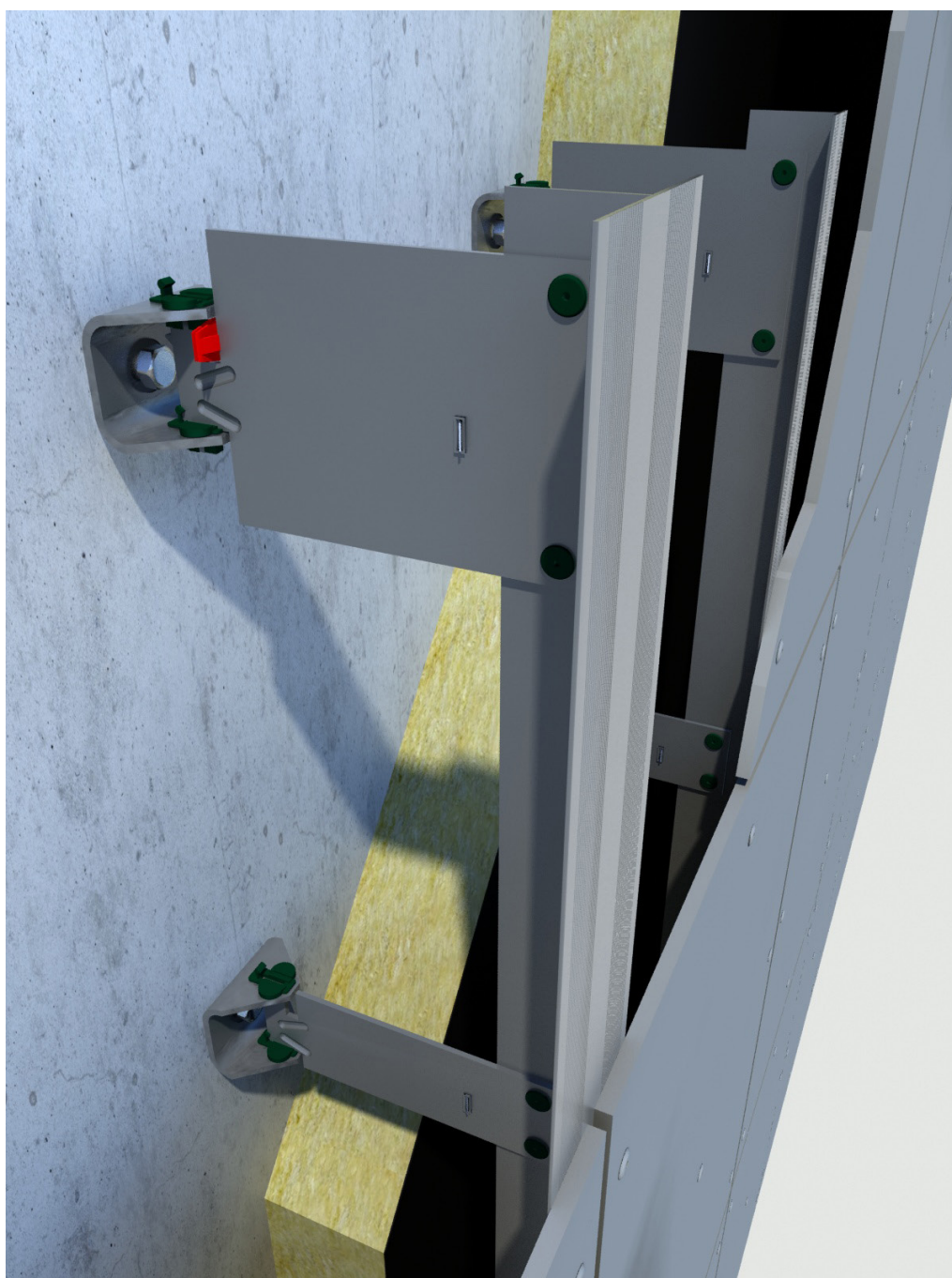


ATK 100 ZeLa

Technische Informationen

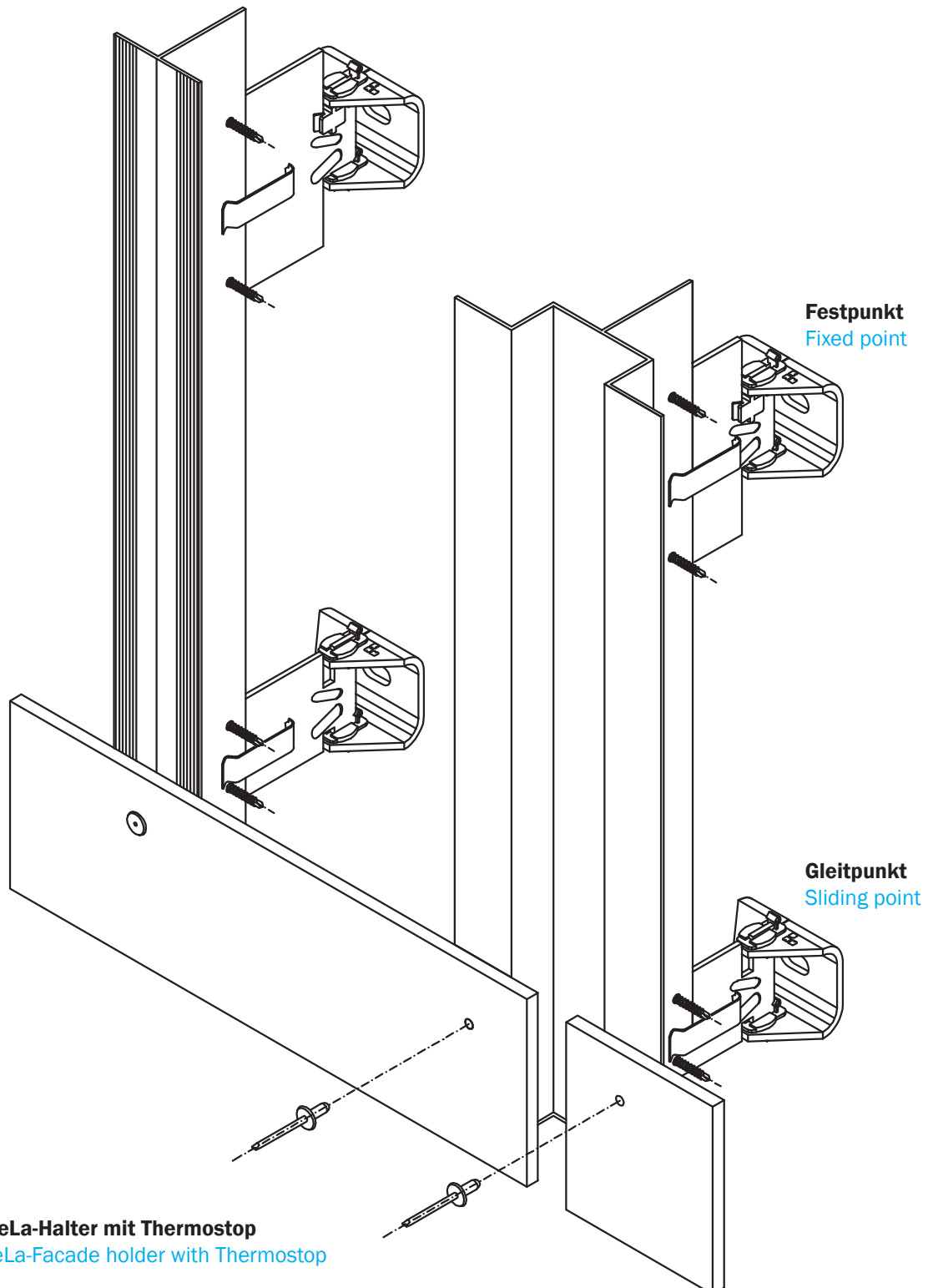
ATK 100 ZeLa
Technical Information



Konstruktionsbeispiel

Construction example

Ebene Fassadentafeln, sichtbar befestigt
Plane facade panels, visible fixing

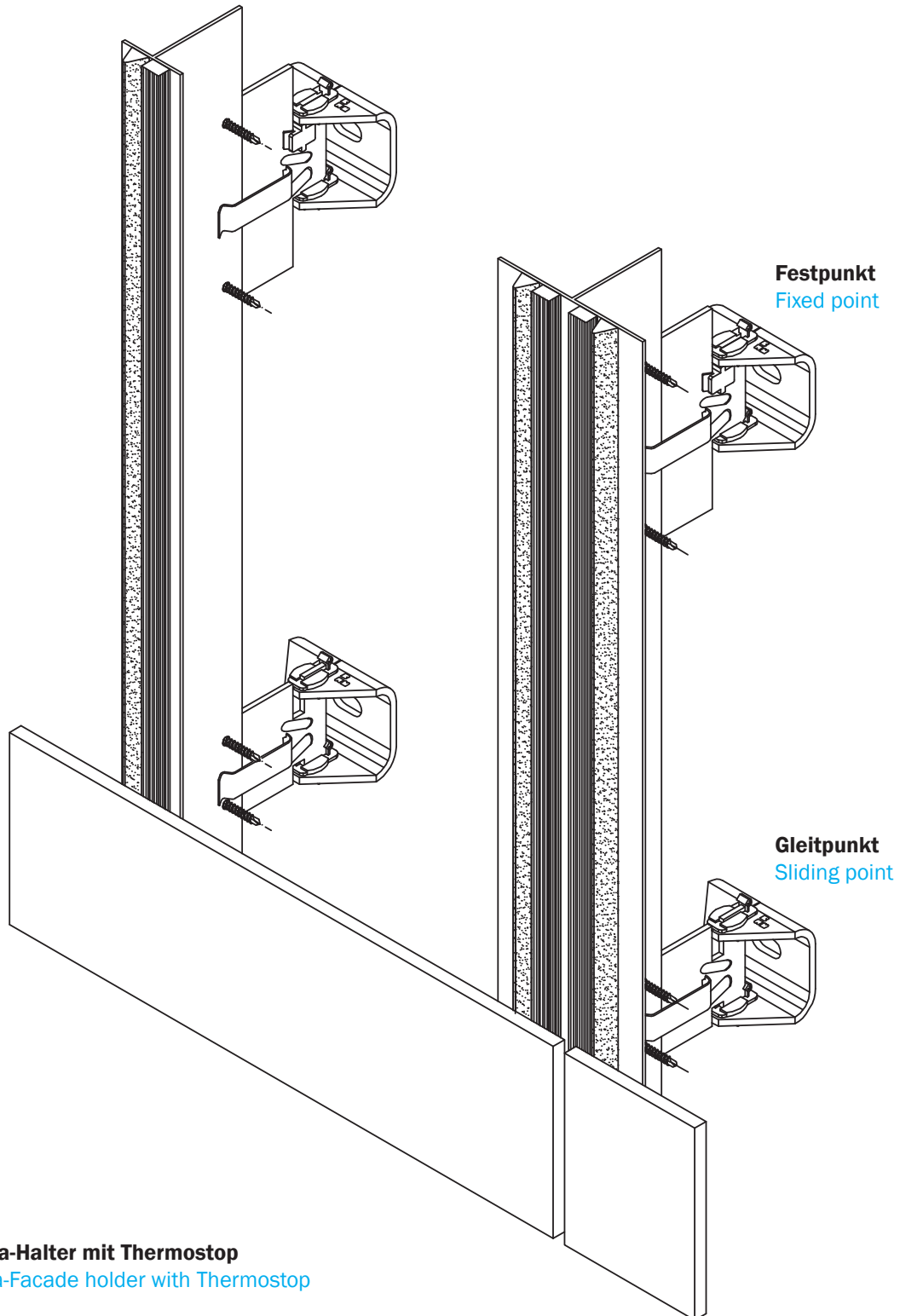


Optional: ZeLa-Halter mit Thermostop
Optional: ZeLa-Facade holder with Thermostop

Konstruktionsbeispiel

Construction example

Ebene Fassadentafeln, geklebt
Plane facade panels, bonded



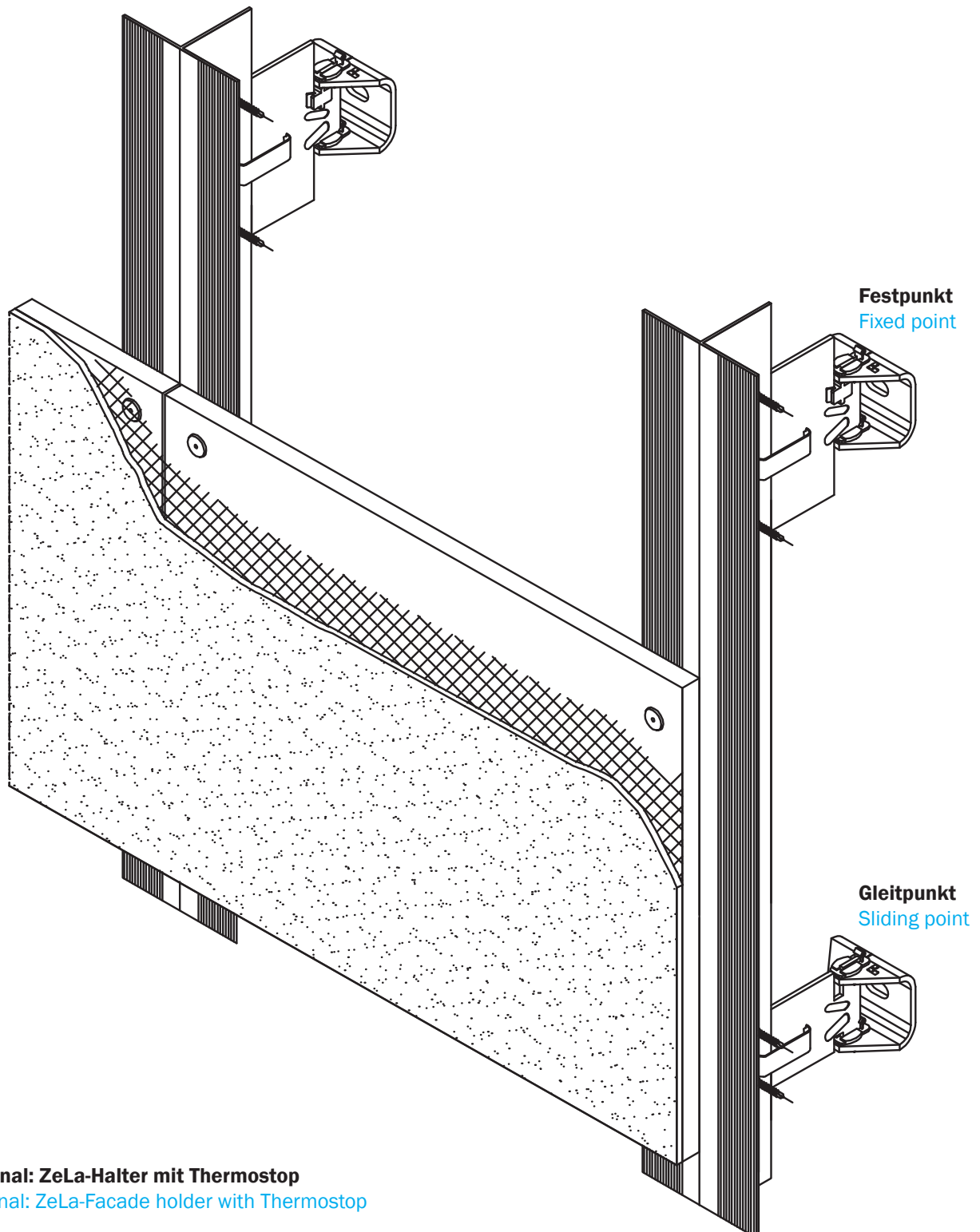
Optional: ZeLa-Halter mit Thermostop
Optional: ZeLa-Facade holder with Thermostop

Konstruktionsbeispiel

Construction example

Fugenlose Putzfassade, verdeckte Befestigung

Jointless rendered boards, hidden fixing



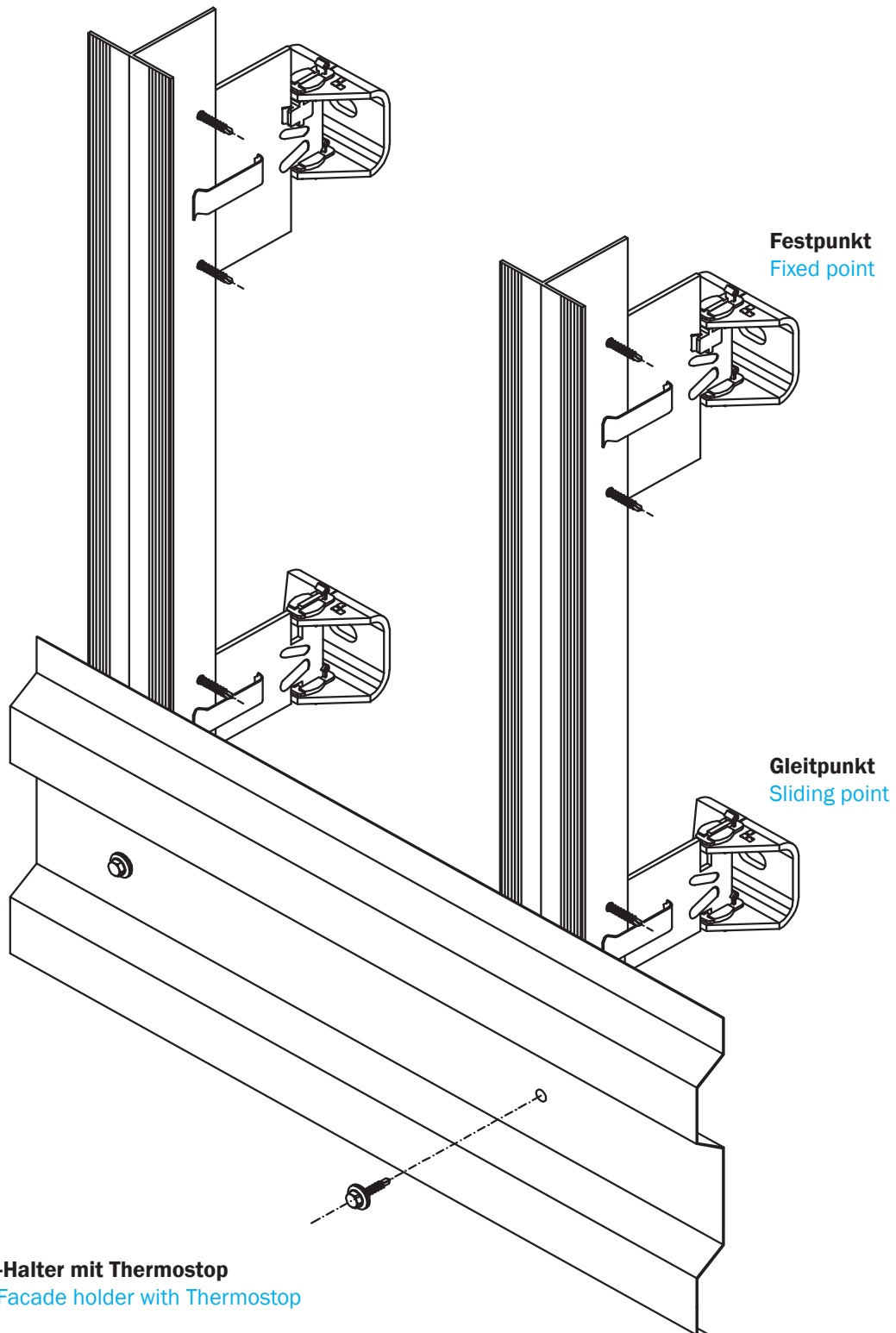
Optional: ZeLa-Halter mit Thermostop

Optional: ZeLa-Facade holder with Thermostop

Konstruktionsbeispiel

Construction example

Horizontale Metall-Trapezprofile, sichtbar befestigt
Horizontal trapezoidal profiles, visible fixing

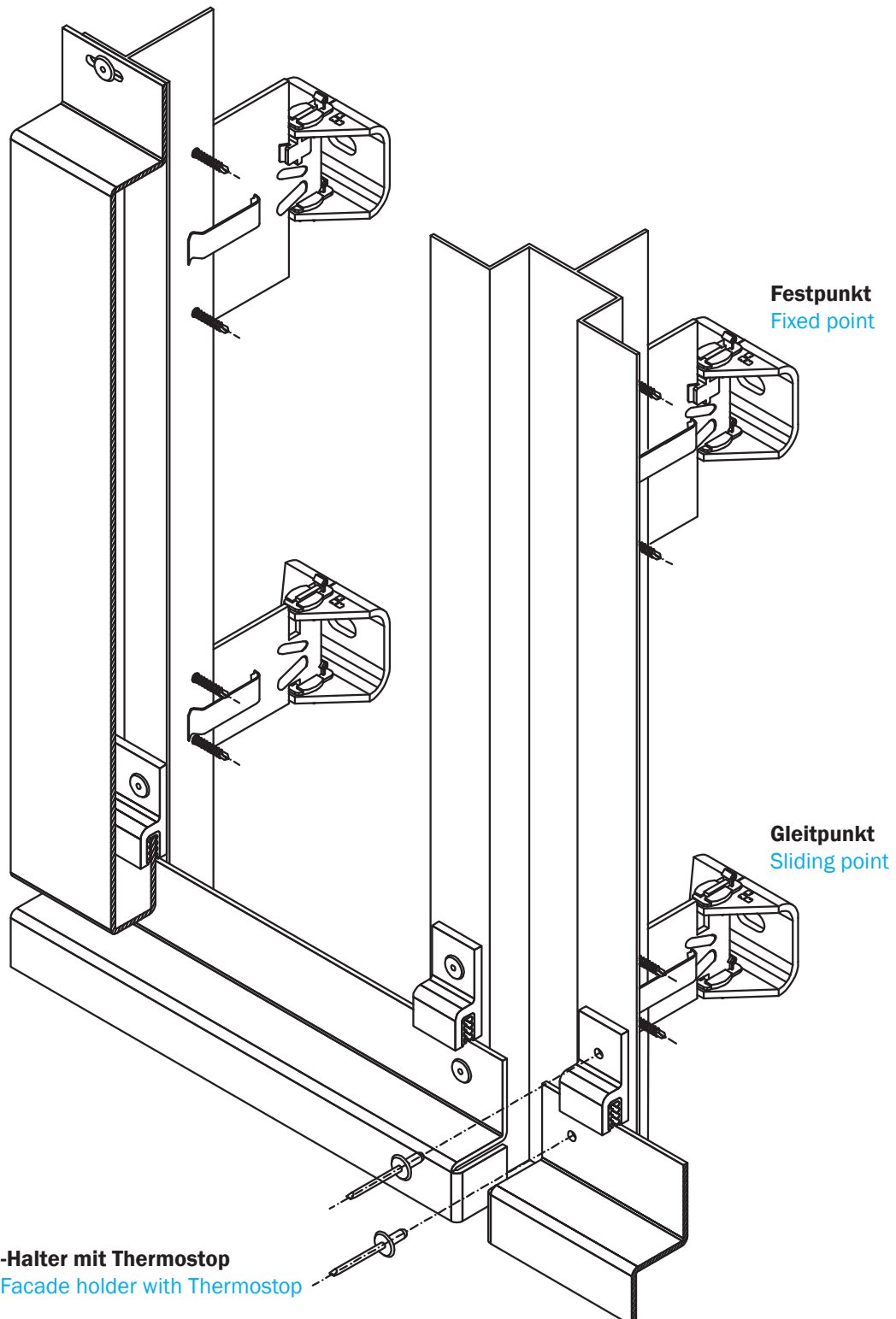


Konstruktionsbeispiel

Construction example

Metal-Paneele/Kassetten, Clip-Befestigung

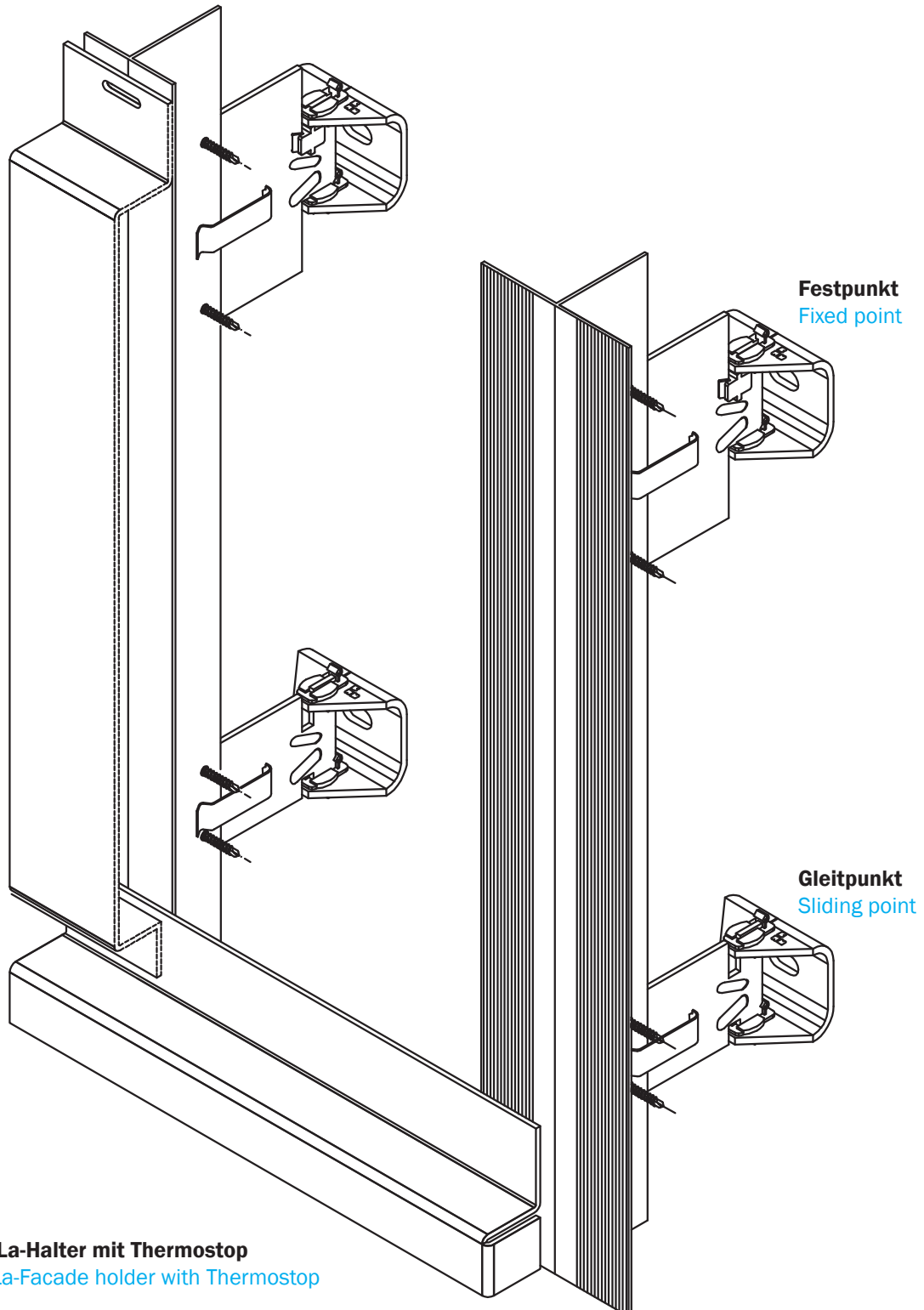
Metal panels/coffers, clip fixing



Konstruktionsbeispiel

Construction example

Metall-Paneele/Kassetten, sichtbar befestigt
Metal panels/coffers, visible fixing



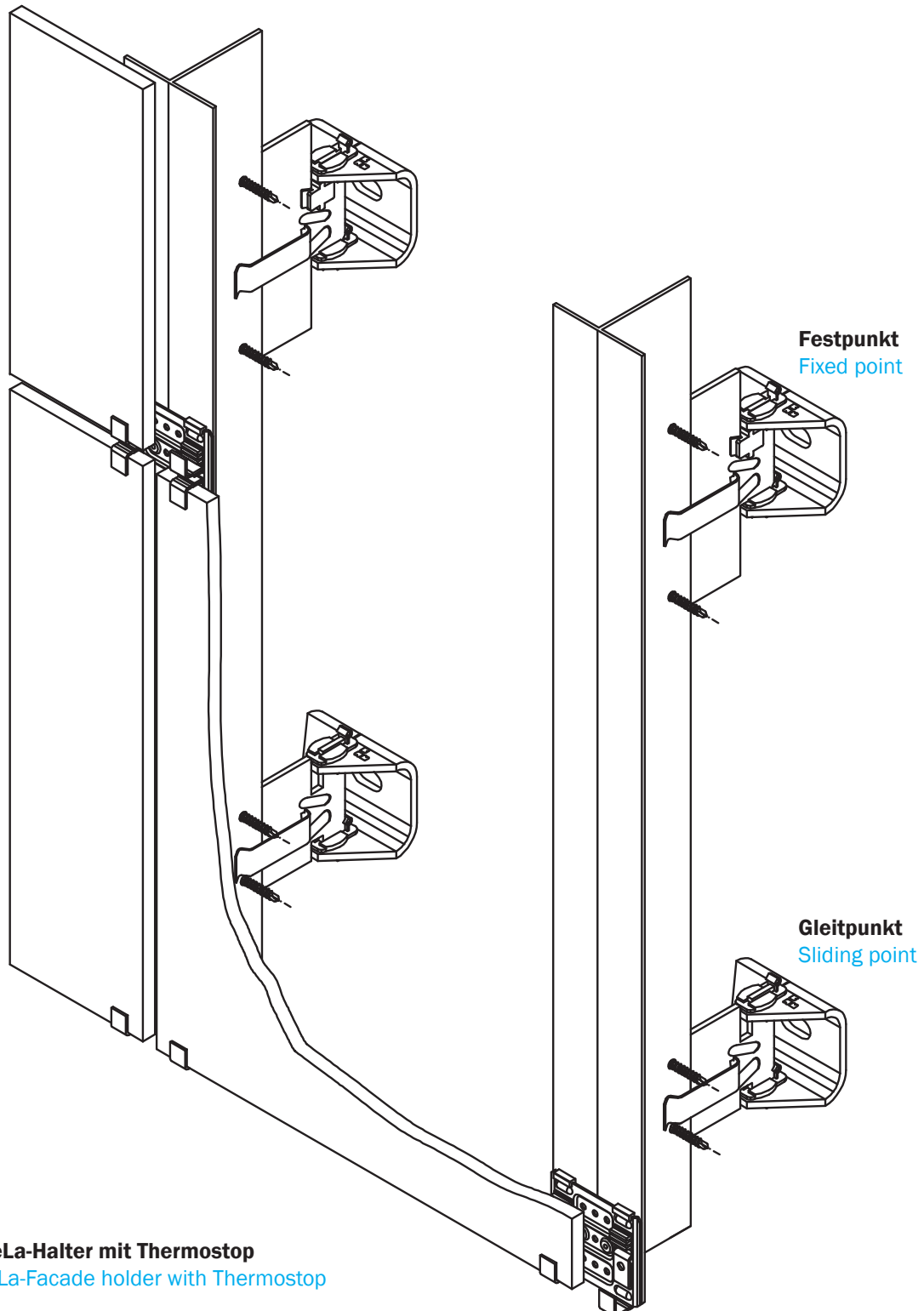
Optional: ZeLa-Halter mit Thermostop
Optional: ZeLa-Facade holder with Thermostop

Konstruktionsbeispiel

Construction example

Ebene Platten/Keramik, Klammerbefestigung

Plane panels/ceramic tiles, clamp fixing

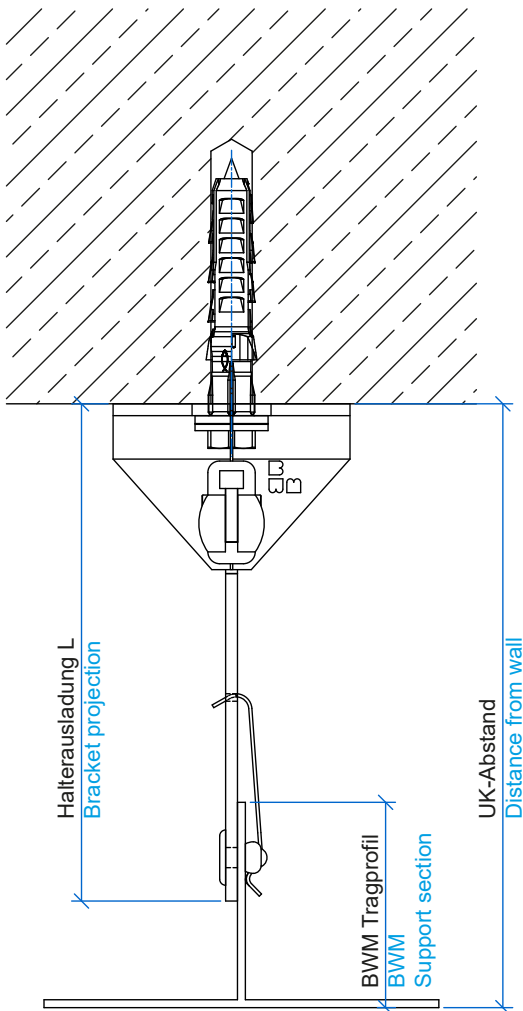


Optional: ZeLa-Halter mit Thermostop

Optional: ZeLa-Facade holder with Thermostop

Wandabstände

Distance from the wall



Halterausladung L (mm) Bracket projectio L (mm)		UK-Abstand (mm) Distance from the wall (mm)
100	AL	102 + T bis / up to 132 + T
120	AL/E	122 + T bis / up to 152+ T
140	AL/E	142 + T bis / up to 172+ T
160	AL/E	162 + T bis / up to 192 + T
180	AL/E	182 + T bis / up to 212 + T
200	AL/E	202 + T bis / up to 232 + T
220*	AL/E	222 + T bis / up to 252 + T
240*	AL/E	242 + T bis / up to 272 + T
260*	AL/E	262 + T bis / up to 292 + T
280*	AL/E	282 + T bis / up to 312 + T
300*	AL/E	302 + T bis / up to 332 + T
320*	AL/E	322 + T bis / up to 352 + T

ZeLa-Schwert in Aluminium (AL)

ZeLa-Schwert in Edelstahl (E)

ZeLa-strut made of aluminium (AL)

ZeLa-strut made of stainless steel (E)

***Mit Verprägungsrillen**

***With stamping grooves**

**Der Gleitbereich des ZeLa Halters beträgt ± 4,0 mm.
Bei Ansatz der Temperaturdifferenz gemäß DIN 18516-1 darf
damit der Abstand vom Festpunkt zum äußeren Gleitpunkt
maximal 2,50 m betragen!**

The sliding range of ZeLa brackets is ± 4,0 mm.

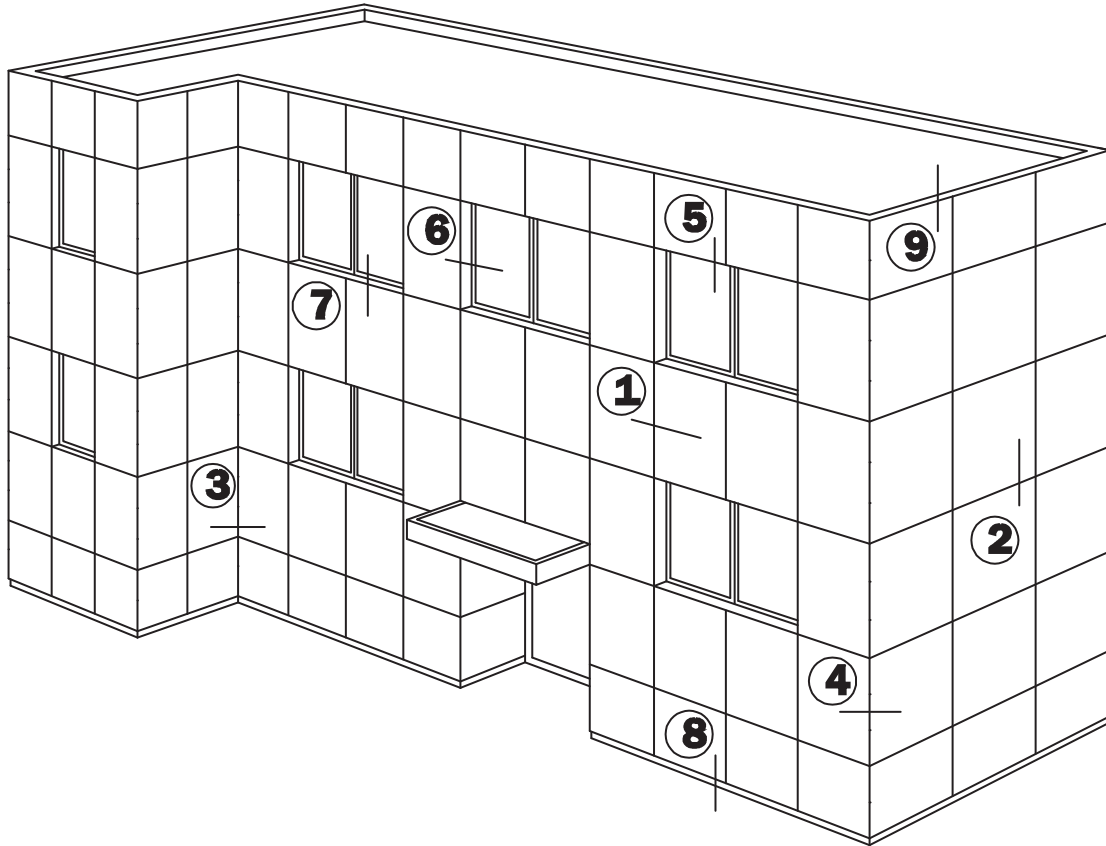
If a temperature difference according to DIN 18516-1 is assumed, the maximum permissible distance from the fixed point to the exterior sliding point is 2,50 m.

Optional - BWM-Thermostop, T = 6 mm

Optional - BWM-Thermal separating layer, T = 6 mm

Schnittübersicht

Section overview



Schnitt 1
Section 1

Horizontalschnitt
Horizontal section

Schnitt 6
Section 6

Fensterleibung
Window embrasure

Schnitt 2
Section 2

Vertikalschnitt
Vertical section

Schnitt 7
Section 7

Fensterbank
Window sill

Schnitt 3
Section 3

Innenecke
Internal corner

Schnitt 8
Section 8

Sockelabschluss
Lower edge (bottom end)

Schnitt 4
Section 4

Außenecke
External corner

Schnitt 9
Section 9

Attikaabschluss
Attic connection (top end)

Schnitt 5
Section 5

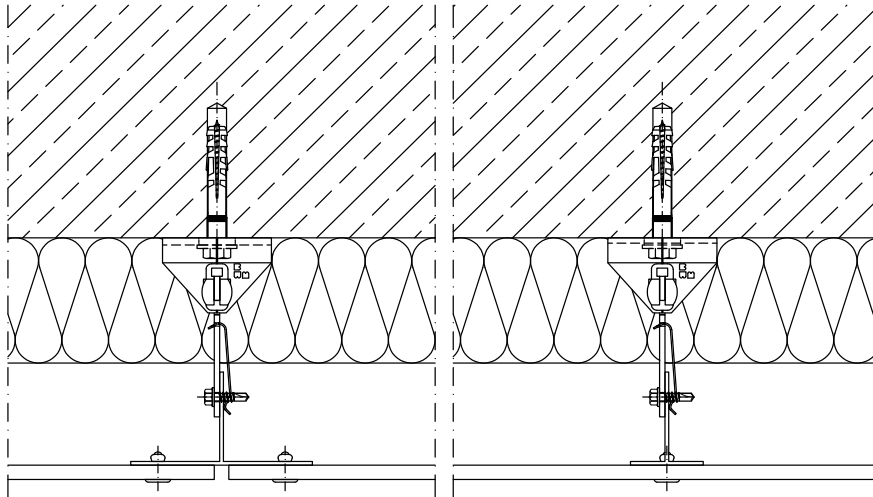
Jalousiekasten
Roller-blind box

Schnitte

Sections

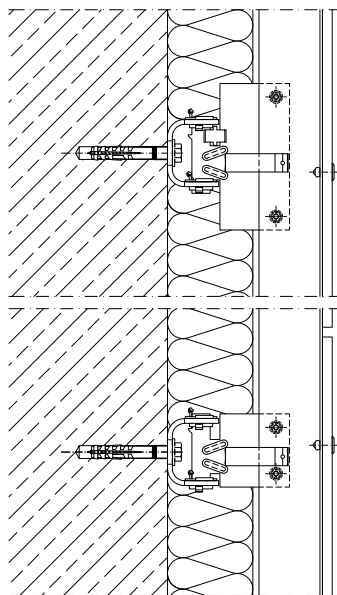
Schnitt 1 Horizontalschnitt

Section 1 Horizontal section



Schnitt 2 Vertikalschnitt

Section 2 Vertical section



Angrenzende Bauteile sind hier nur schematisch dargestellt. Die konkrete Detailausbildung ist unter Beachtung von Normen, Vorschriften und Richtlinien objektbezogen separat zu planen.

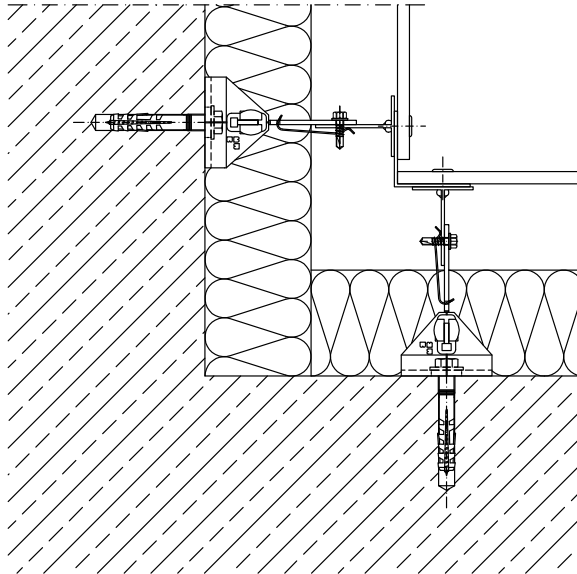
Adjacent components are shown here only schematically. The concrete details are to be planned separately in respect of the particular building involved. This must be done in accordance with the relevant standards, regulations and guidelines.

Schnitte

Sections

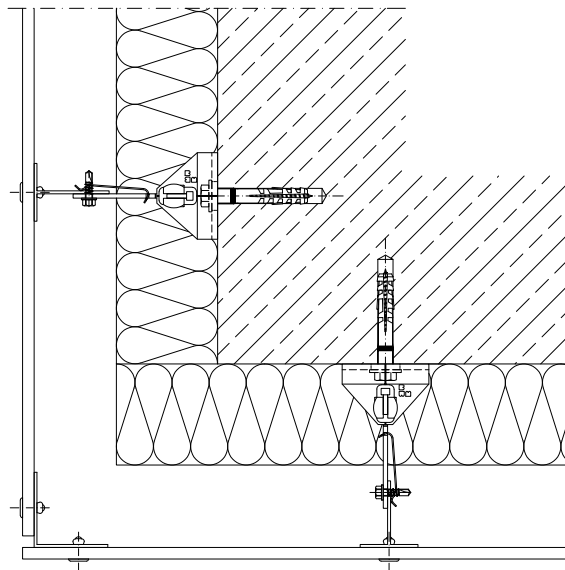
Schnitt 3 Innenecke

Section 3 Internal corner



Schnitt 4a Außenecke

Section 4a External corner



Angrenzende Bauteile sind hier nur schematisch dargestellt. Die konkrete Detailausbildung ist unter Beachtung von Normen, Vorschriften und Richtlinien objektbezogen separat zu planen.

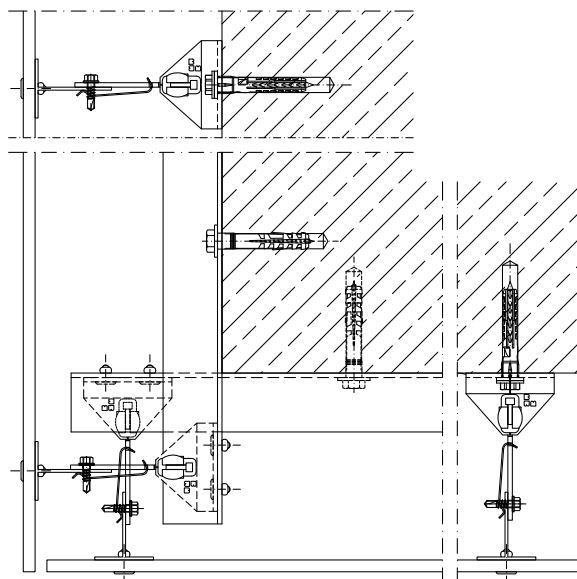
Adjacent components are shown here only schematically. The concrete details are to be planned separately in respect of the particular building involved. This must be done in accordance with the relevant standards, regulations and guidelines.

Schnitte

Sections

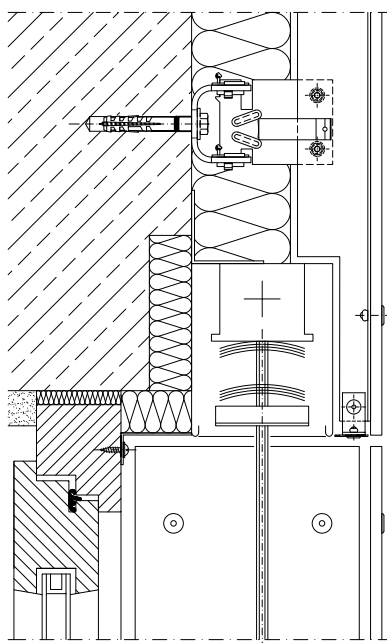
Schnitt 4b Außenecke

Section 4b External corner



Schnitt 5 Jalousiekasten

Section 5 Roller-blind box



Angrenzende Bauteile sind hier nur schematisch dargestellt. Die konkrete Detailausbildung ist unter Beachtung von Normen, Vorschriften und Richtlinien objektbezogen separat zu planen.

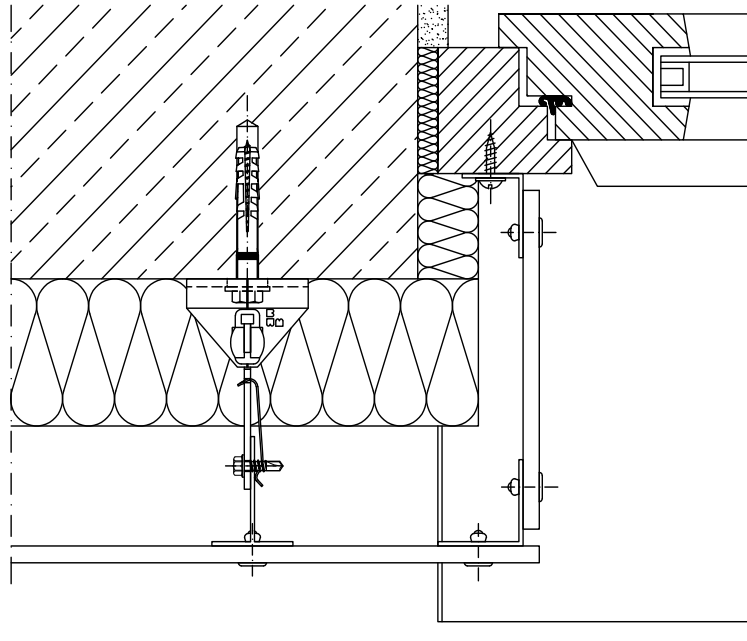
Adjacent components are shown here only schematically. The concrete details are to be planned separately in respect of the particular building involved. This must be done in accordance with the relevant standards, regulations and guidelines.

Schnitte

Sections

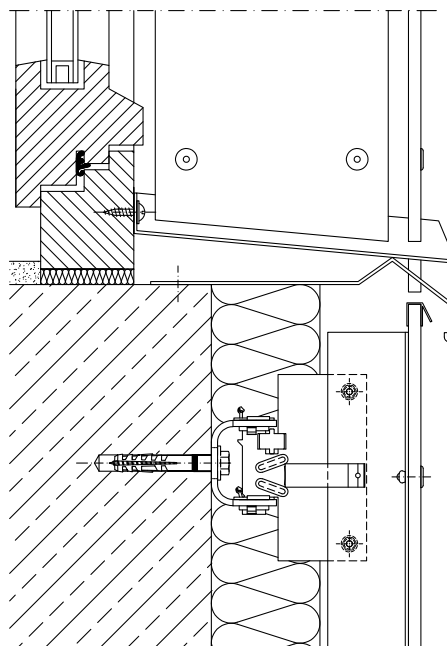
Schnitt 6 Fensterleibung

Section 6 Window embrasure



Schnitt 7 Fensterbank

Section 7 Window sill



Angrenzende Bauteile sind hier nur schematisch dargestellt. Die konkrete Detailausbildung ist unter Beachtung von Normen, Vorschriften und Richtlinien objektbezogen separat zu planen.

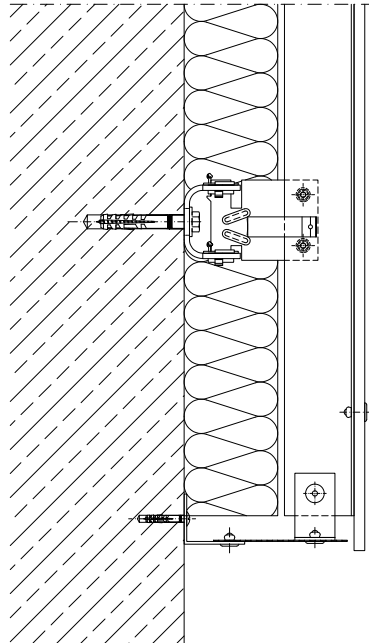
Adjacent components are shown here only schematically. The concrete details are to be planned separately in respect of the particular building involved. This must be done in accordance with the relevant standards, regulations and guidelines.

Schnitte

Sections

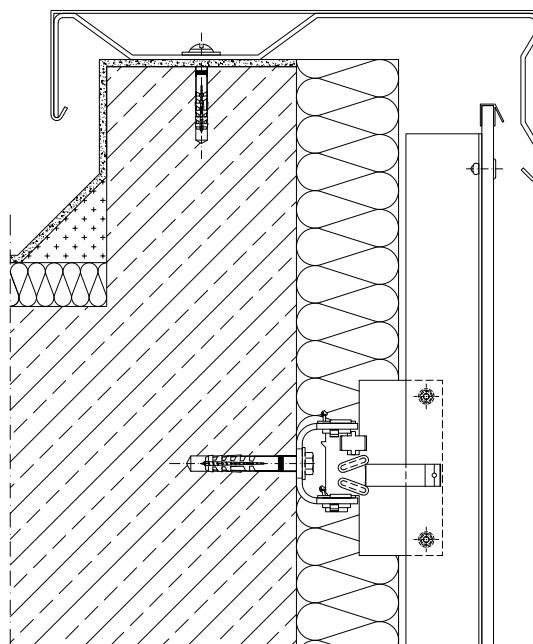
Schnitt 8 Sockelabschluss

Section 8 Lower edge



Schnitt 9 Attikaabschluss

Section 9 Attic connection



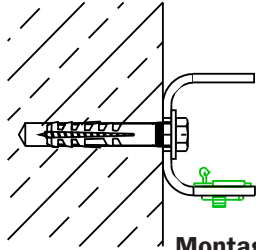
Angrenzende Bauteile sind hier nur schematisch dargestellt. Die konkrete Detailausbildung ist unter Beachtung von Normen, Vorschriften und Richtlinien objektbezogen separat zu planen.

Adjacent components are shown here only schematically. The concrete details are to be planned separately in respect of the particular building involved. This must be done in accordance with the relevant standards, regulations and guidelines.

Halter-Montage

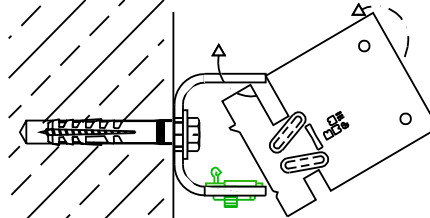
Bracket-mounting

1



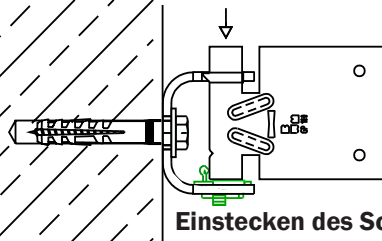
Montage der Konsole
 Console-assembly

2



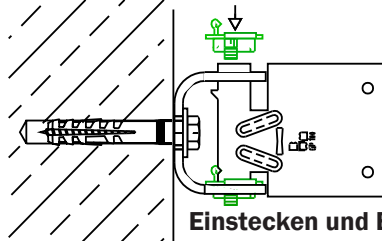
Einhängen des Schwertes in die Konsole
 Guide the strut into the bracket

3



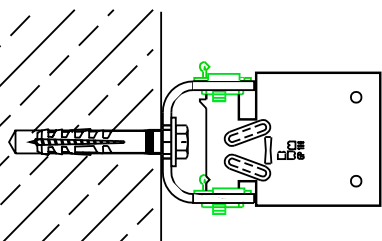
Einstecken des Schwertes in die Konsole bis zum Einrasten des Kupplungszahns
 Insert the strut into to bracket until the snap in tooth locks

4



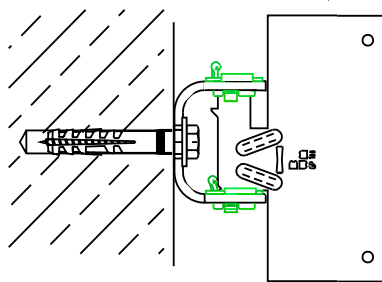
Einstecken und Einrasten der oberen Kupplung in die Konsole
 Insert and lock the top coupling into place in the bracket

5



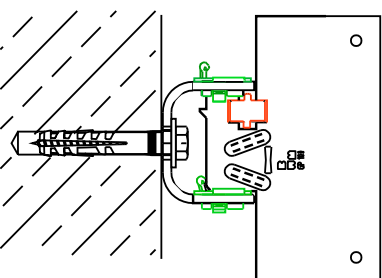
Gleitpunkt fertig montiert!
 Sliding point is now mounted!

6

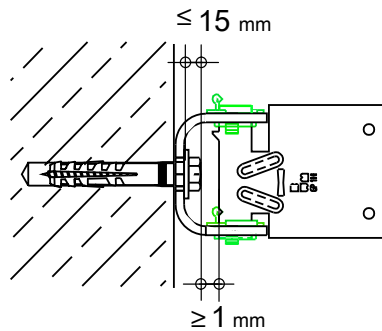


Festpunktschwert auf die untere Kupplung aufsetzen
 Place the fixed point strut on the bottom coupling

7



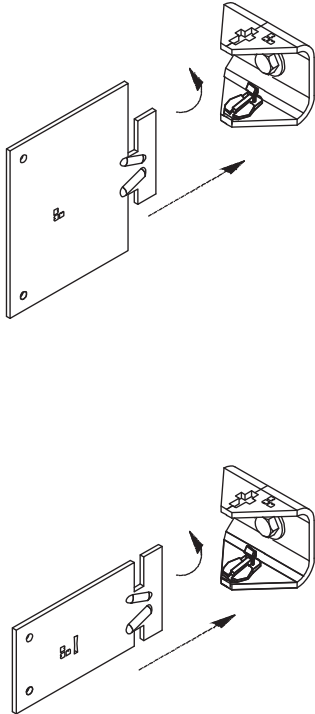
Festpunktclip einrasten
Festpunkt fertig montiert
 Lock in securing clip
 fixed point is now mounted



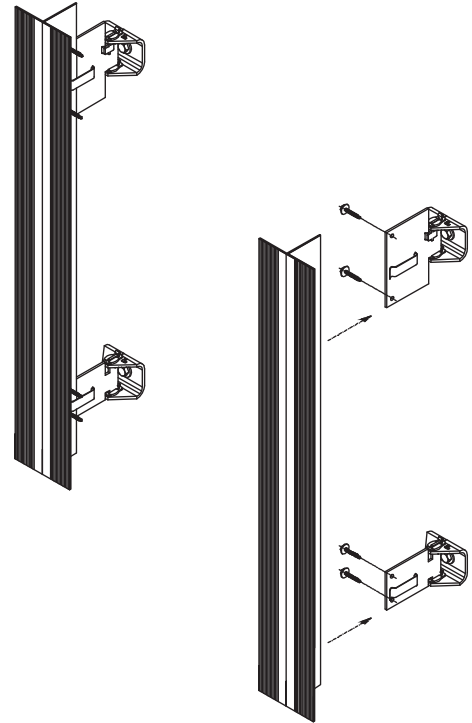
Montagefolge

Mounting sequence

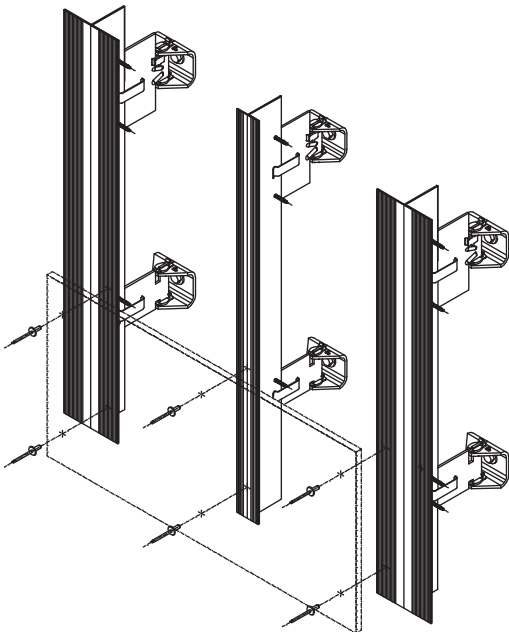
1



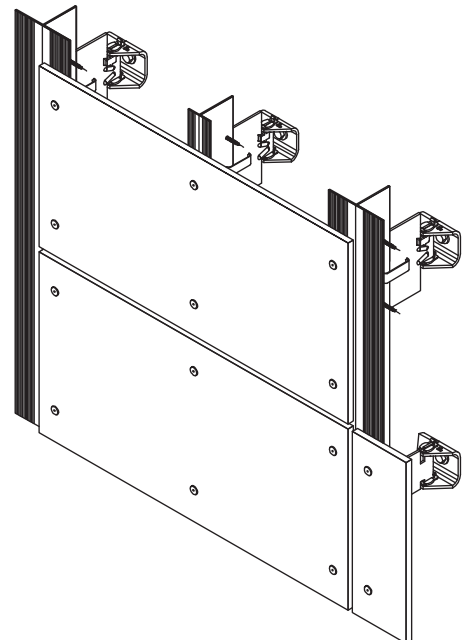
2



3

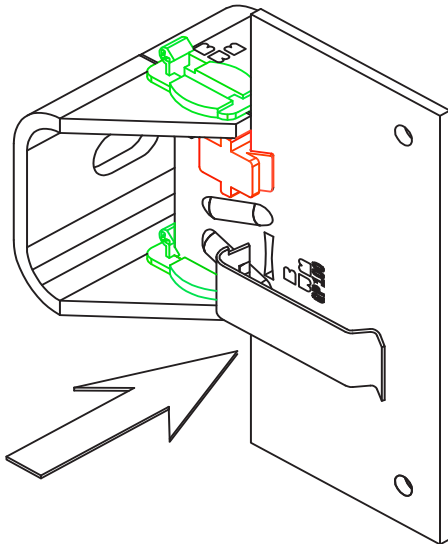


4

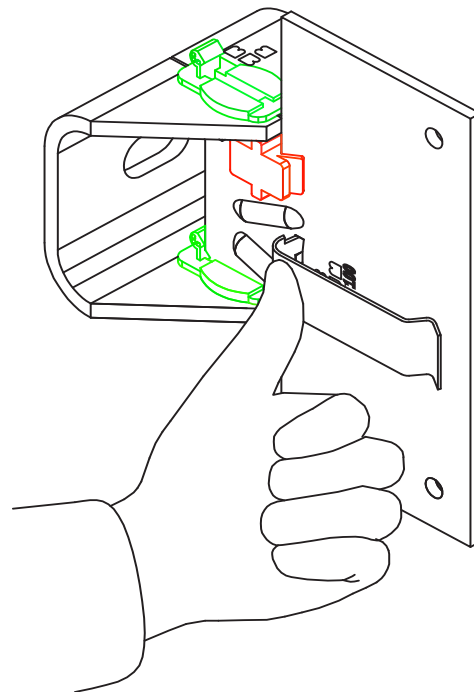


Montage der BWM-Haltefeder

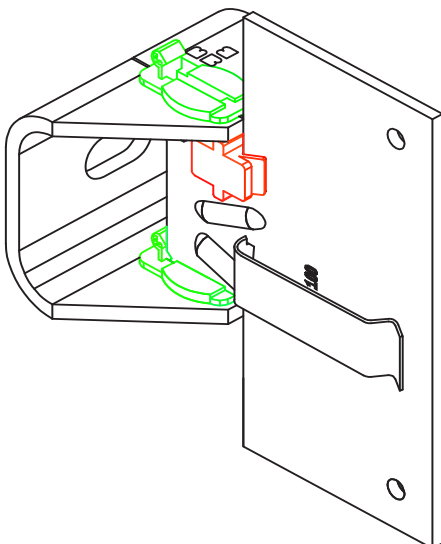
Mounting of the BWM-Innox-spline



Einstecken
Insert



Einclippen
Clip on

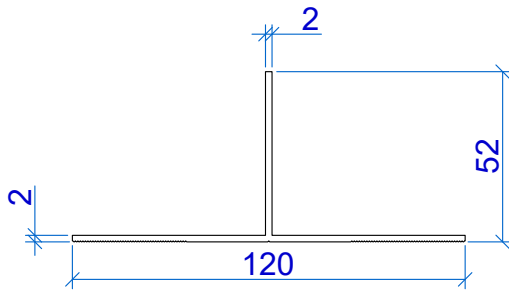


Fertig
Finished

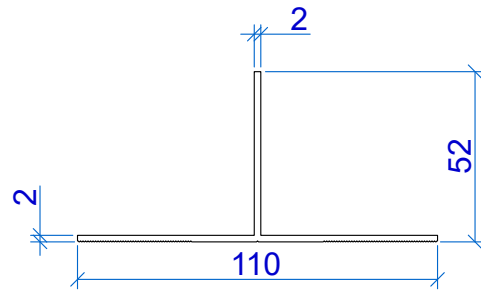
Tragprofile

Support sections

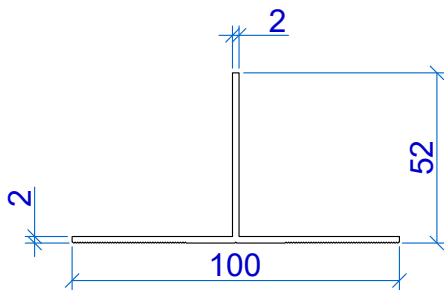
T120/52/2
Art.-Nr. 632730



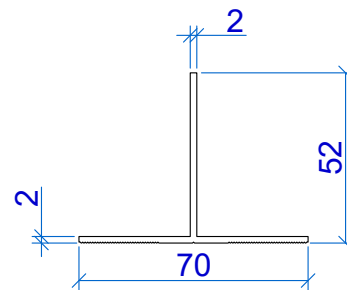
T110/52/2
Art.-Nr. 632713



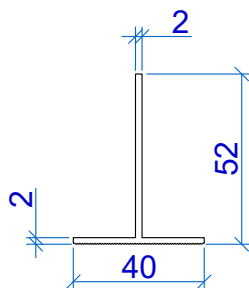
T100/52/2
Art.-Nr. 632700



T70/52/2
Art.-Nr. 632770



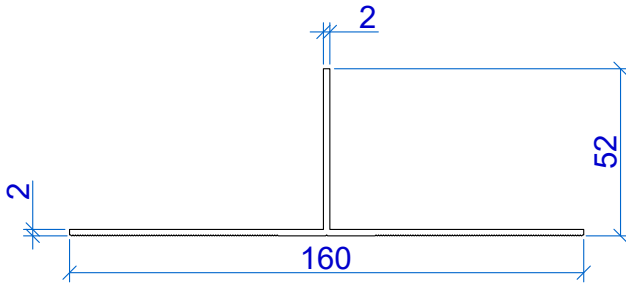
T40/52/2
Art.-Nr. 632740



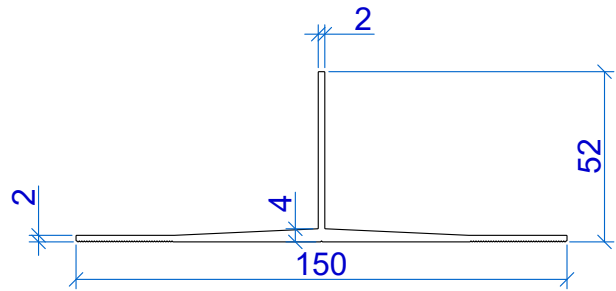
Tragprofile

Support sections

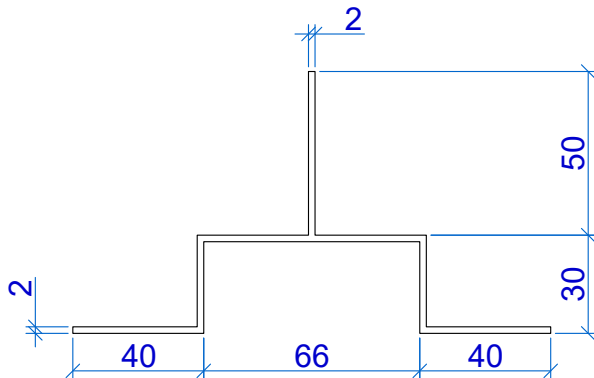
T160/52/2
Art.-Nr. 632760



T150/52/2
Art.-Nr. 632750



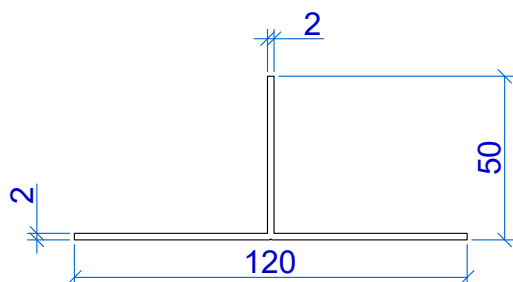
Tulpenprofil
Art.-Nr. 611267



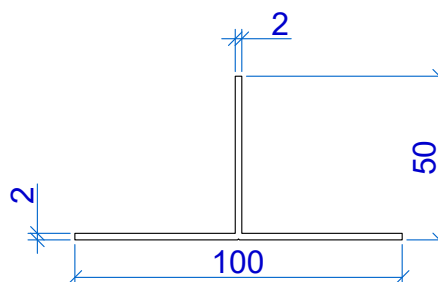
Tragprofile

Support sections

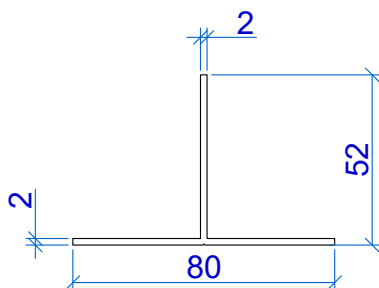
T120/50/2 (glatt / fair-faced)
Art.-Nr. 662730



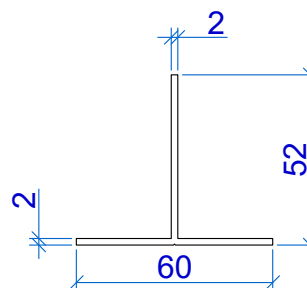
T100/50/2 (glatt / fair-faced)
Art.-Nr. 662700



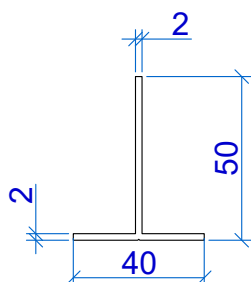
T80/52/2 (glatt / fair-faced)
Art.-Nr. 632780



T60/52/2 (glatt / fair-faced)
Art.-Nr. 632710



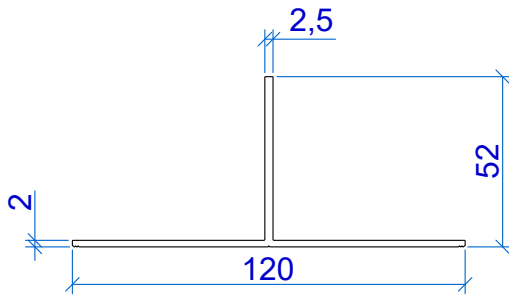
T40/50/2 (glatt / fair-faced)
Art.-Nr. 662740



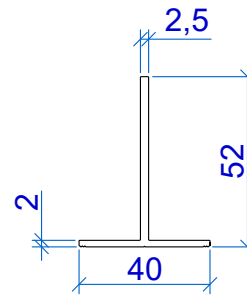
Tragprofile

Support sections

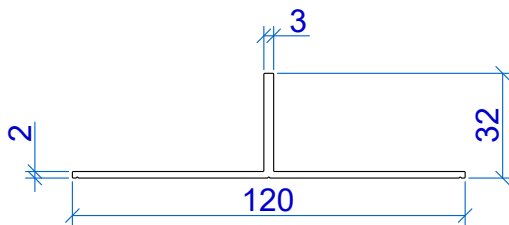
T120/52/2,5 (glatt / fair-faced)
Art.-Nr. 632735



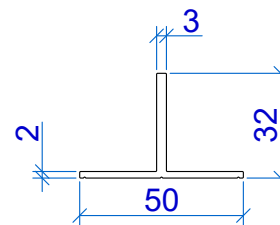
T40/52/2,5 (glatt / fair-faced)
Art.-Nr. 632745



T120/32/2-3 (glatt / fair-faced)
Art.-Nr. 632734



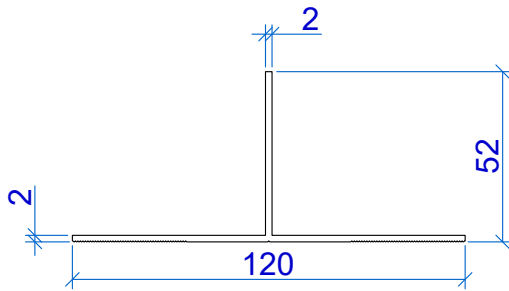
T50/32/2-3 (glatt / fair-faced)
Art.-Nr. 632751



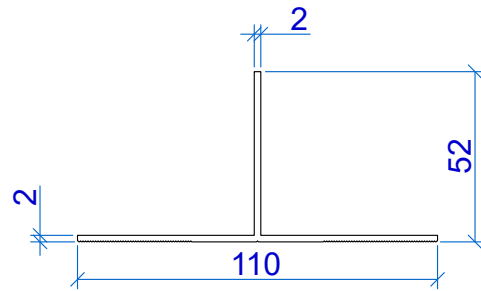
Tragprofile - Schwarz eloxiert

Support sections - Black anodized

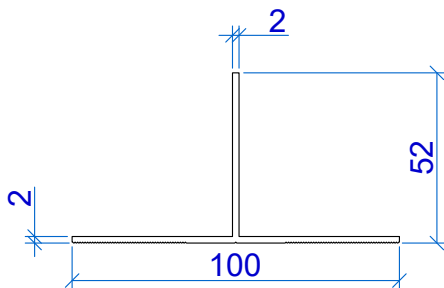
T120/52/2
Art.-Nr. S632731



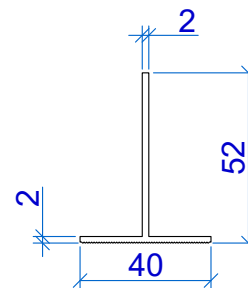
T110/52/2
Art.-Nr. S632713



T100/52/2
Art.-Nr. S63737



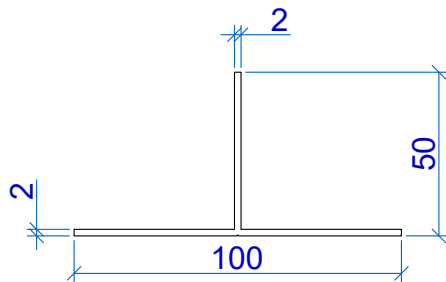
T40/52/2
Art.-Nr. S632739



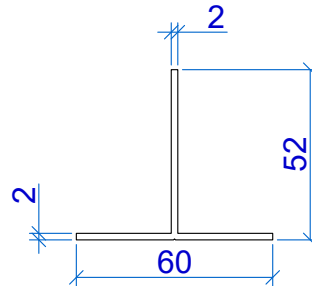
Tragprofile - Schwarz eloxiert

Support sections - Black anodized

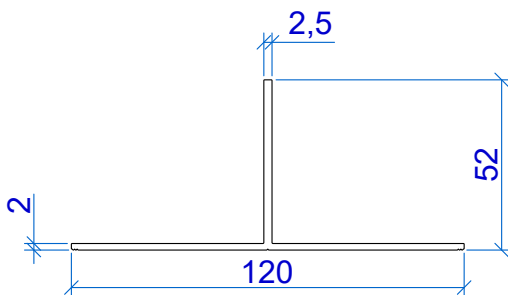
T100/50/2 (glatt / fair-faced)
Art.-Nr. S662700



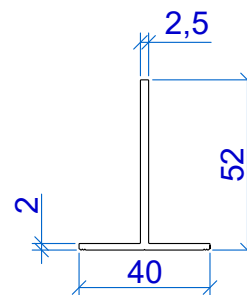
T60/52/2 (glatt / fair-faced)
Art.-Nr. S632711



T120/52/2,5 (glatt / fair-faced)
S632735



T40/52/2,5 (glatt / fair-faced)
S632745



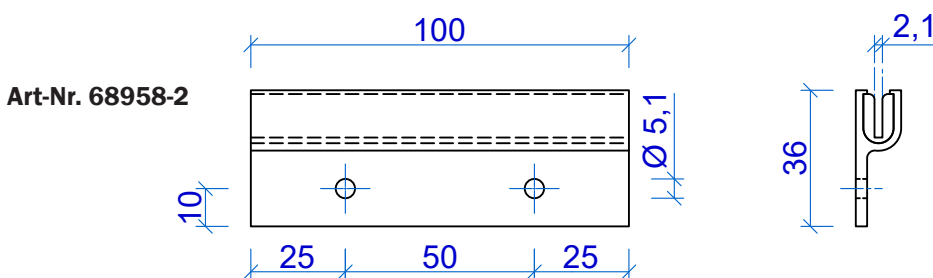
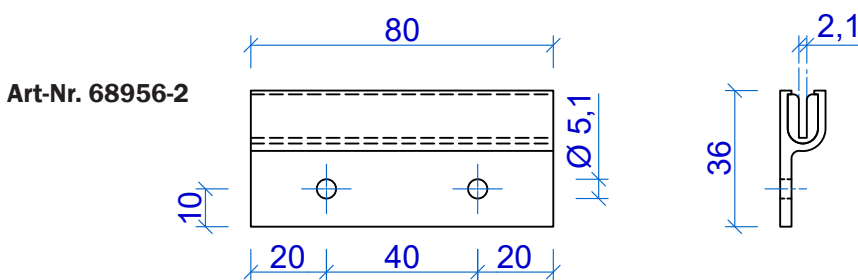
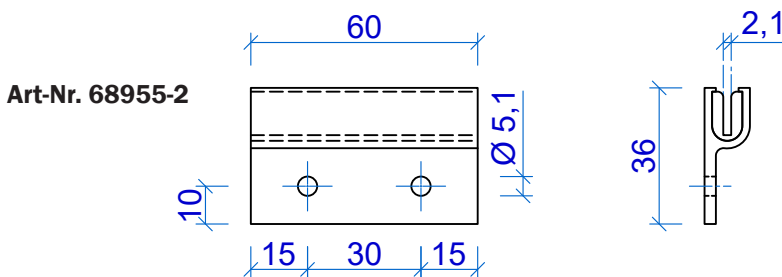
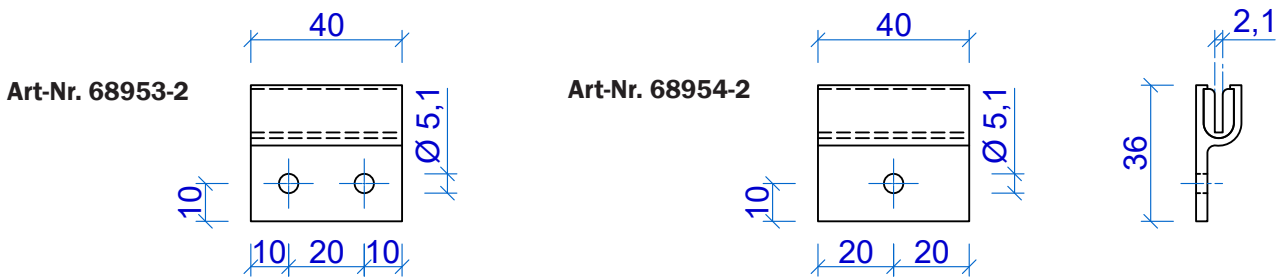
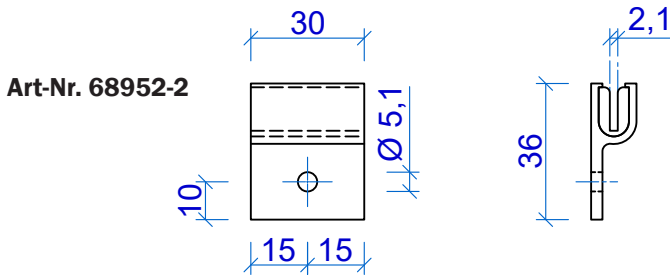
Clip 107

Clip 107

Material: EN AW 6063 T 66 / TPE TR 91

Zur Befestigung von 2 mm Kassetten und Paneelen

For fixing of 2 mm coffers and panels

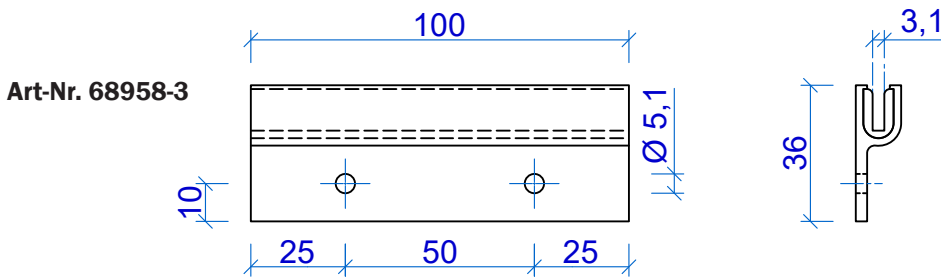
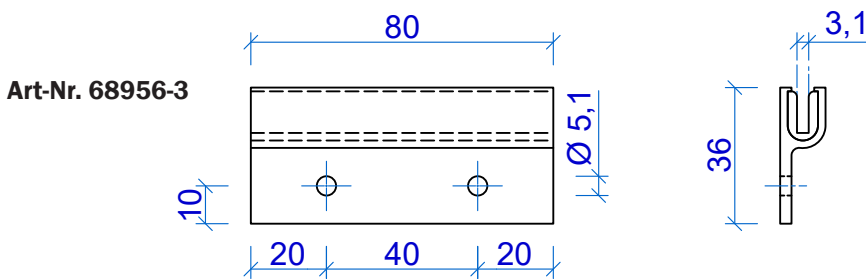
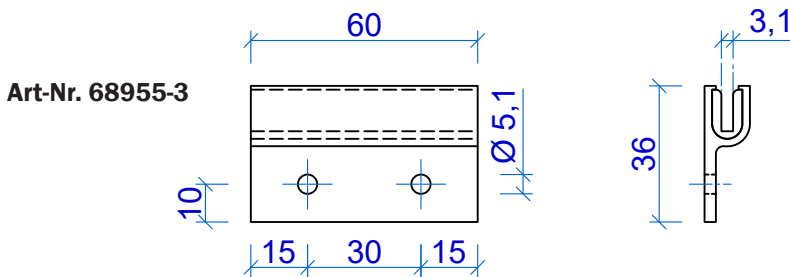
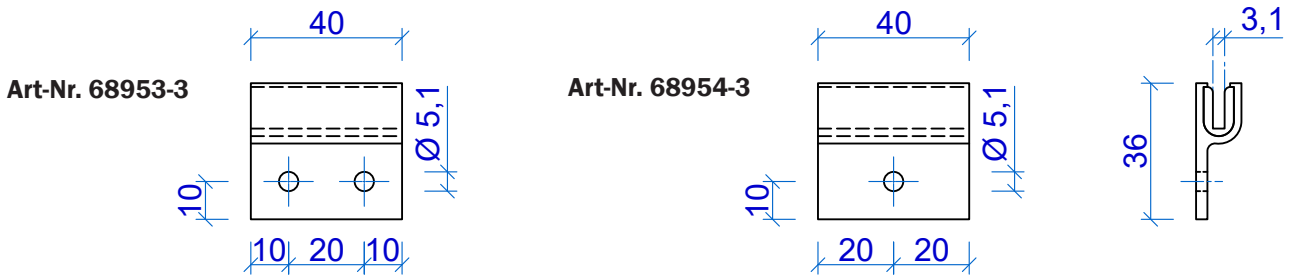
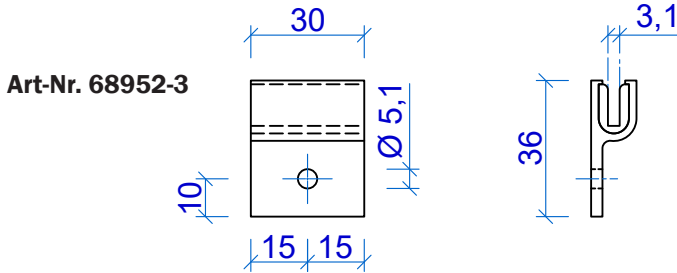


Andere Längen auf Anfrage
Further dimensions on demand

Clip 107

Clip 107

Material: EN AW 6063 T 66 / TPE TR 91
Zur Befestigung von 3 mm Kassetten und Paneelen
 For fixing of 3 mm coffers and panels



Andere Längen auf Anfrage
 Further dimensions on demand

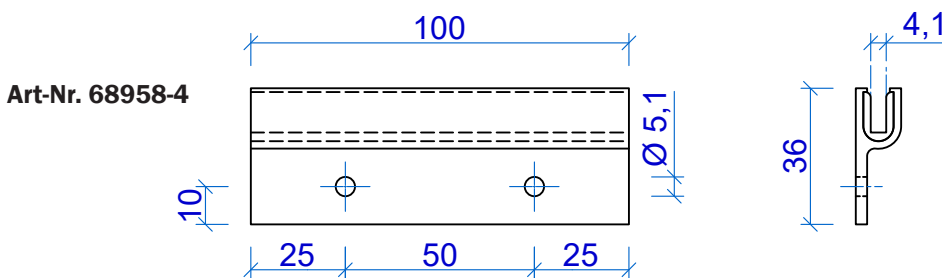
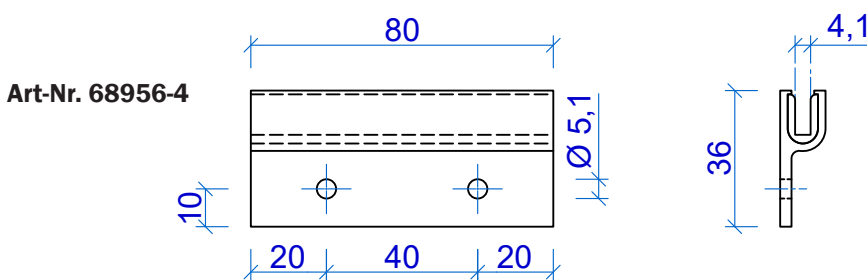
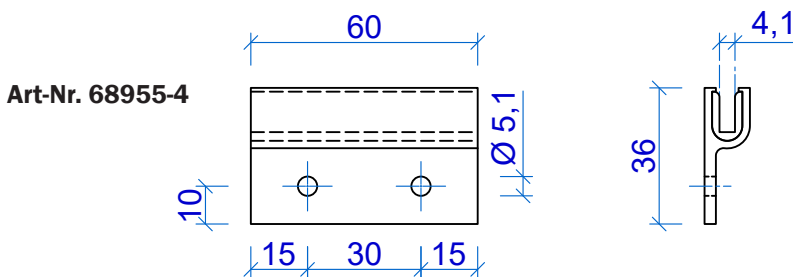
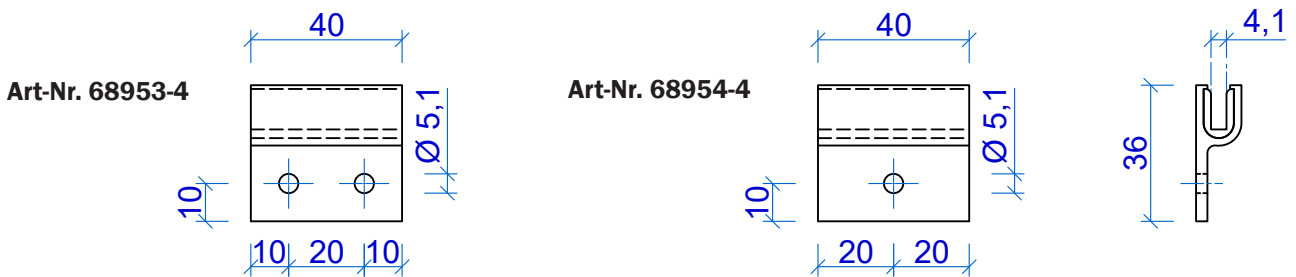
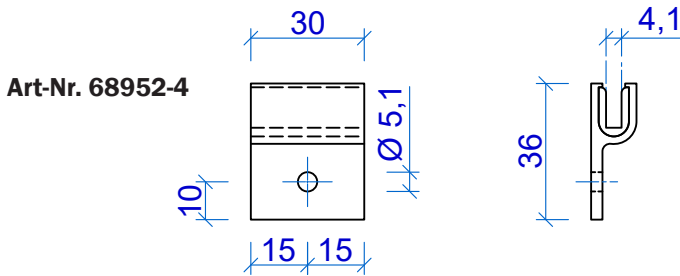
Clip 107

Clip 107

Material: EN AW 6063 T 66 / TPE TR 91

Zur Befestigung von 4 mm Kassetten und Paneelen

For fixing of 4 mm coffers and panels



Andere Längen auf Anfrage
Further dimensions on demand

Fassadenhalter

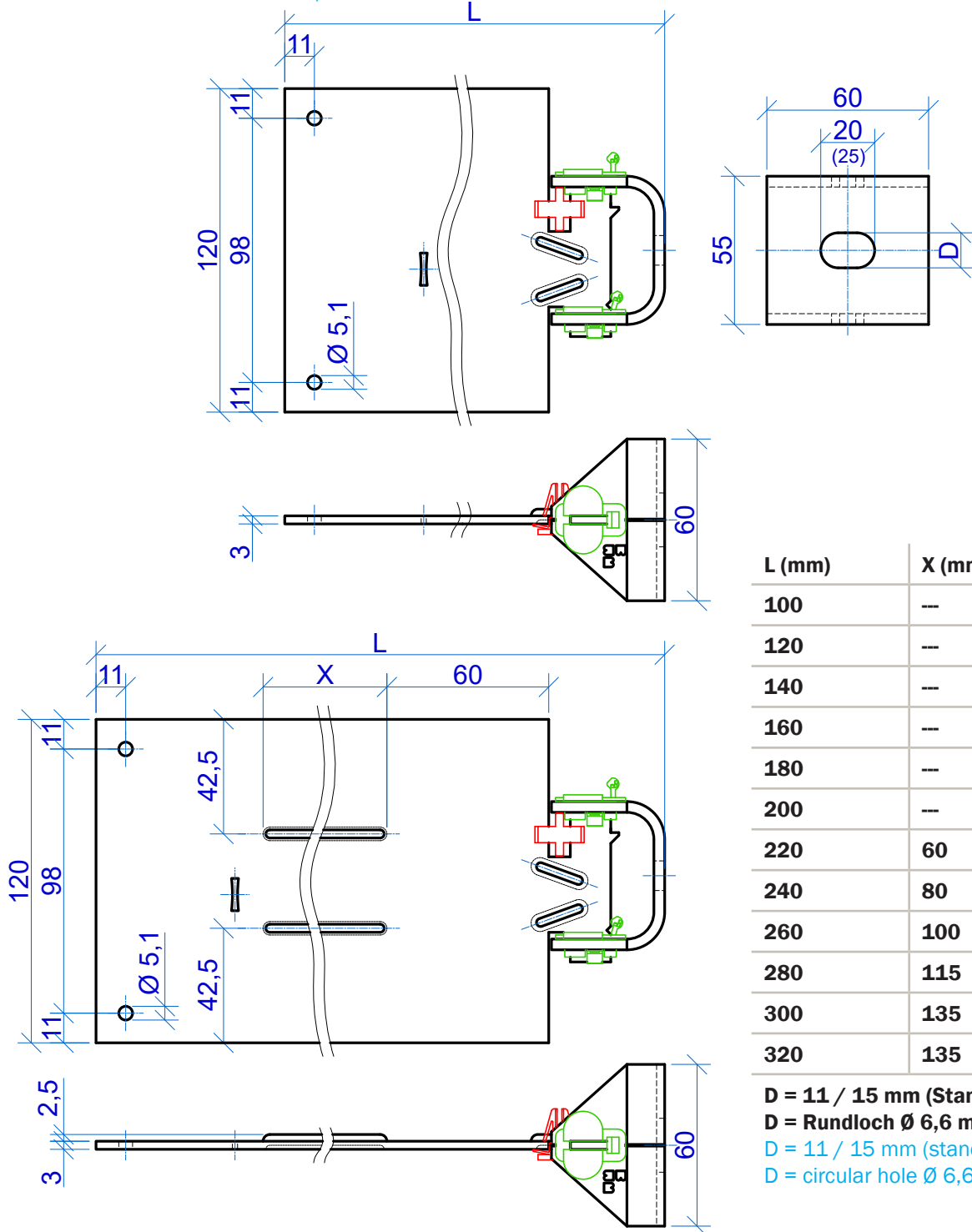
Facade holder

ZeLa Festpunkt-Set (ZeLa-Set-Z1)

ZeLa Fixed point-kit (ZeLa-Kit-Z1)

Material: Konsole aus Aluminium / Schwert aus Aluminium

Material: Console from aluminium / Guide bar from aluminium



L (mm)	X (mm)
100	--
120	--
140	--
160	--
180	--
200	--
220	60
240	80
260	100
280	115
300	135
320	135

D = 11 / 15 mm (Standard)
D = Rundloch Ø 6,6 mm
 D = 11 / 15 mm (standard)
 D = circular hole Ø 6,6 mm

Fassadenhalter

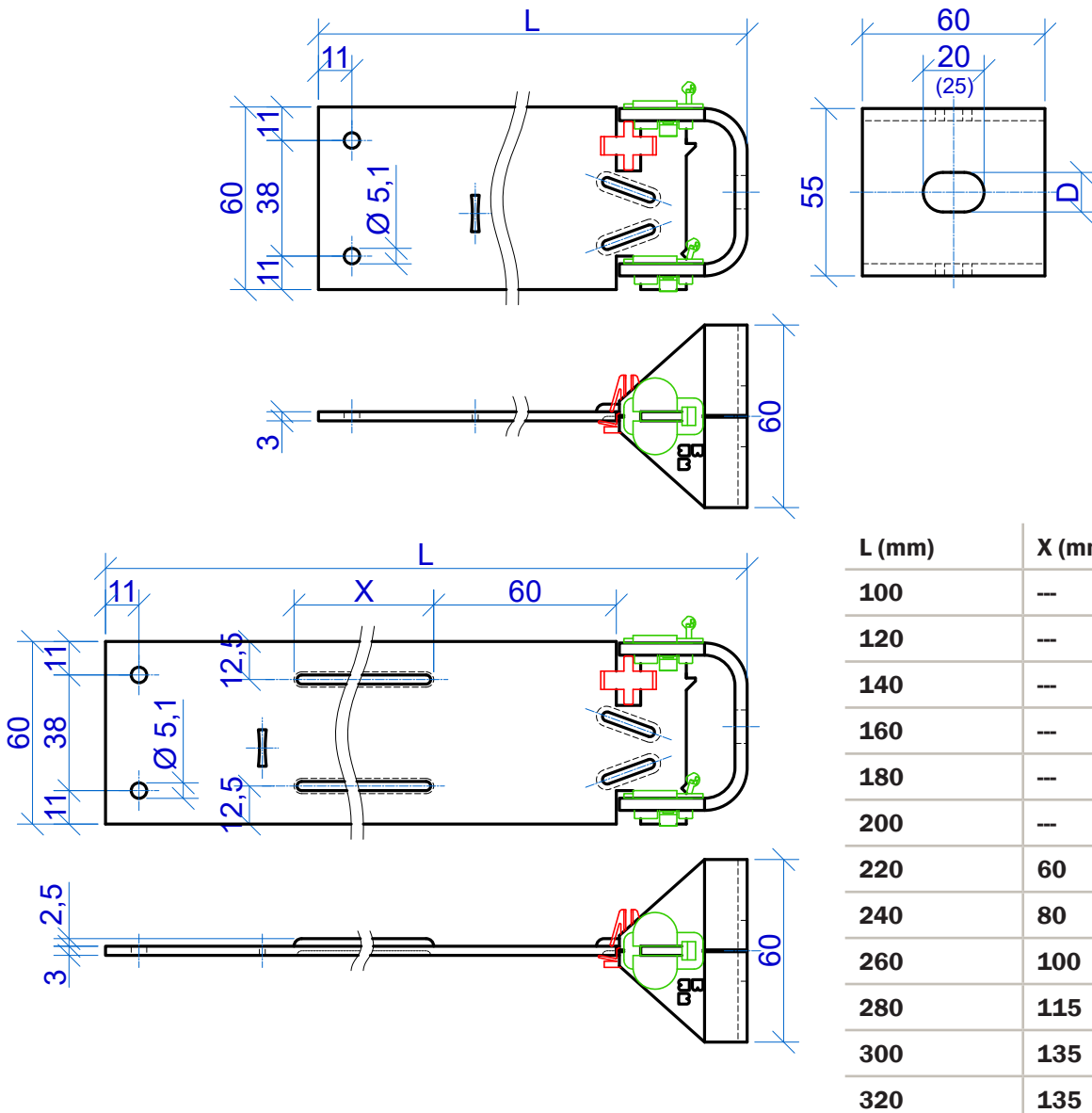
Facade holder

ZeLa Festpunkt-Set klein (ZeLa-Set-Z2)

ZeLa Fixed point-kit small (ZeLa-Kit-Z2)

Material: Konsole aus Aluminium / Schwert aus Aluminium

Material: Console from aluminium / Guide bar from aluminium



D = 11 / 15 mm (Standard)

D = Rundloch Ø 6,6 mm

D = 11 / 15 mm (standard)

D = circular hole Ø 6,6 mm

Fassadenhalter

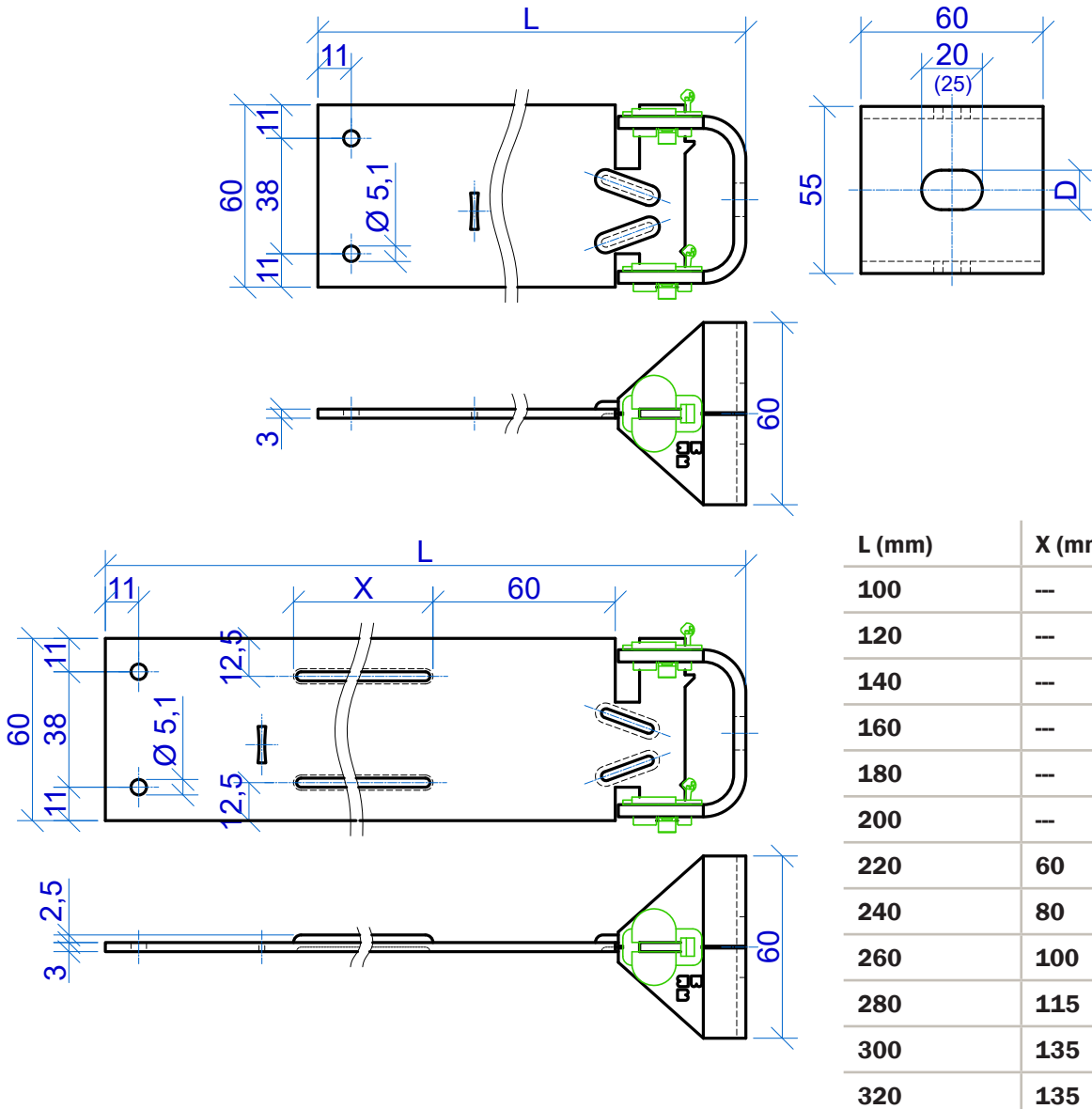
Facade holder

ZeLa Gleitpunkt-Set (ZeLa-Set-Z3)

ZeLa Sliding point-kit (ZeLa-Kit-Z3)

Material: Konsole aus Aluminium / Schwert aus Aluminium

Material: Console from aluminium / Guide bar from aluminium



L (mm)	X (mm)
100	---
120	---
140	---
160	---
180	---
200	---
220	60
240	80
260	100
280	115
300	135
320	135

D = 11 / 15 mm (Standard)

D = Rundloch Ø 6,6 mm

D = 11 / 15 mm (standard)

D = circular hole Ø 6,6 mm

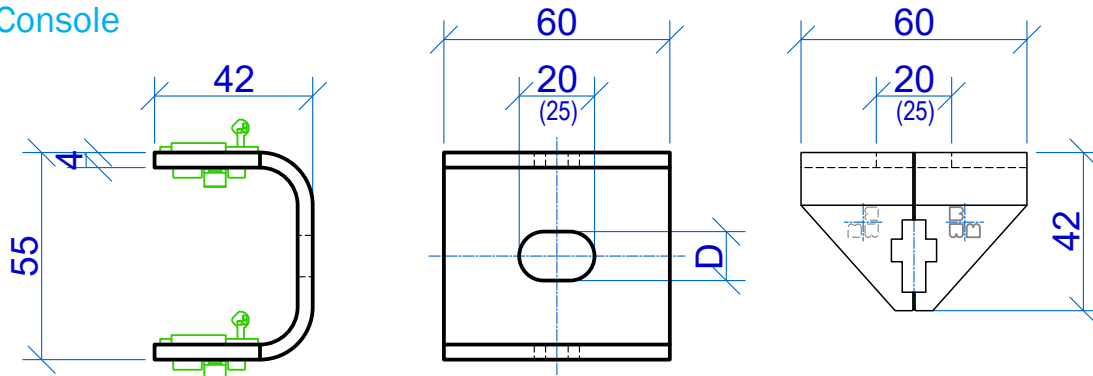
Systemkomponenten

System components

Material: Konsole aus Aluminium / Schwert aus Aluminium
Material: Console from aluminium / Guide bar from aluminium

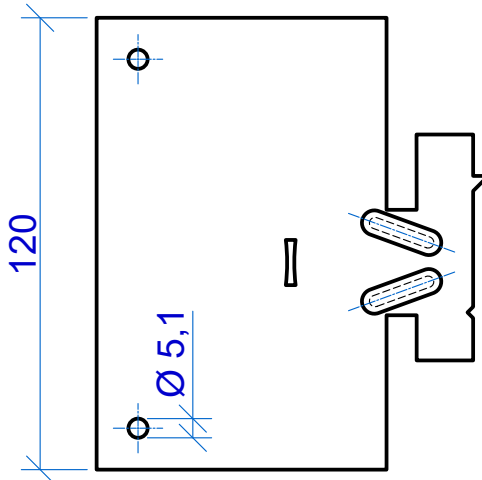
ZeLa - Konsole

ZeLa - Console



ZeLa - Festpunkt Schwert

ZeLa - Fixed point guide bar

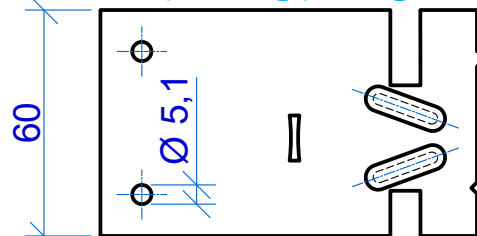


L = 100 / 120 / 140 / 160 / 180 / 200 mm

L = 220 / 240 / 260 / 280 / 300 / 320 mm
Mit Verprägungsrillen
With stamping grooves

ZeLa - Fest-/Gleitpunkt Schwert

ZeLa - Fixed/Sliding point guide bar

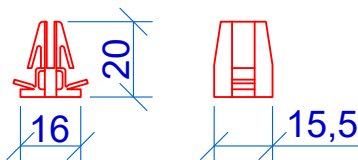


L = 100 / 120 / 140 / 160 / 180 / 200 mm

L = 220 / 240 / 260 / 280 / 300 / 320 mm
Mit Verprägungsrillen
With stamping grooves

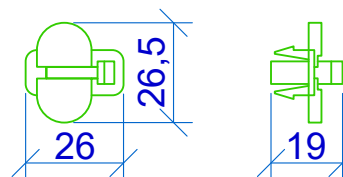
ZeLa - Festpunkt Clip

ZeLa - Fixed point clip



ZeLa - Kupplung

ZeLa - Coupling



Fassadenhalter

Facade holder

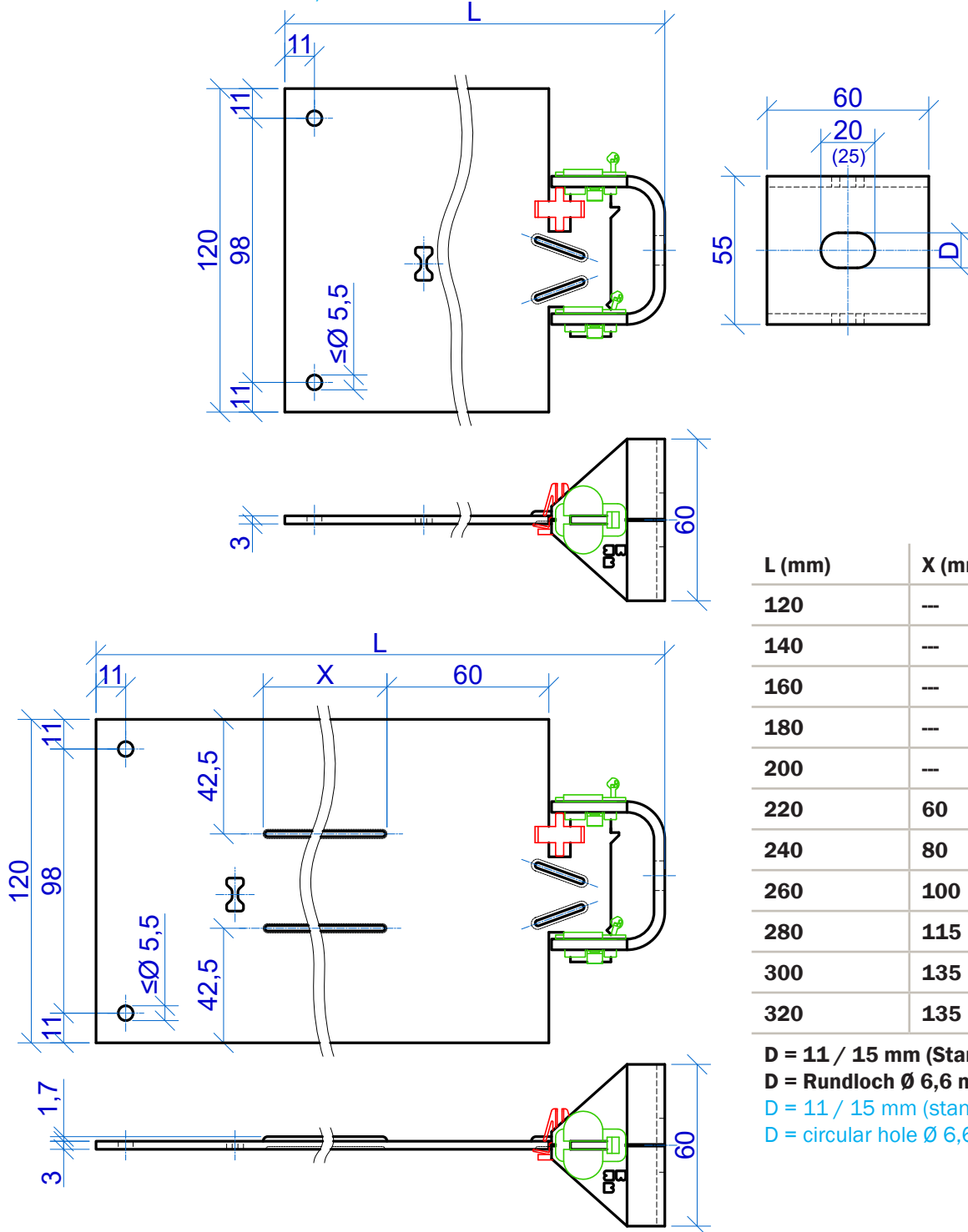
ZeLa Festpunkt-Set (ZeLa-Set-Z1)

ZeLa Fixed point-kit (ZeLa-Kit-Z1)



Material: Konsole aus Aluminium / Schwert aus Edelstahl

Material: Console from aluminium / Guide bar from stainless steel



L (mm)	X (mm)
120	---
140	---
160	---
180	---
200	---
220	60
240	80
260	100
280	115
300	135
320	135

D = 11 / 15 mm (Standard)

D = Rundloch \varnothing 6,6 mm

D = 11 / 15 mm (standard)

D = circular hole \varnothing 6,6 mm

Fassadenhalter

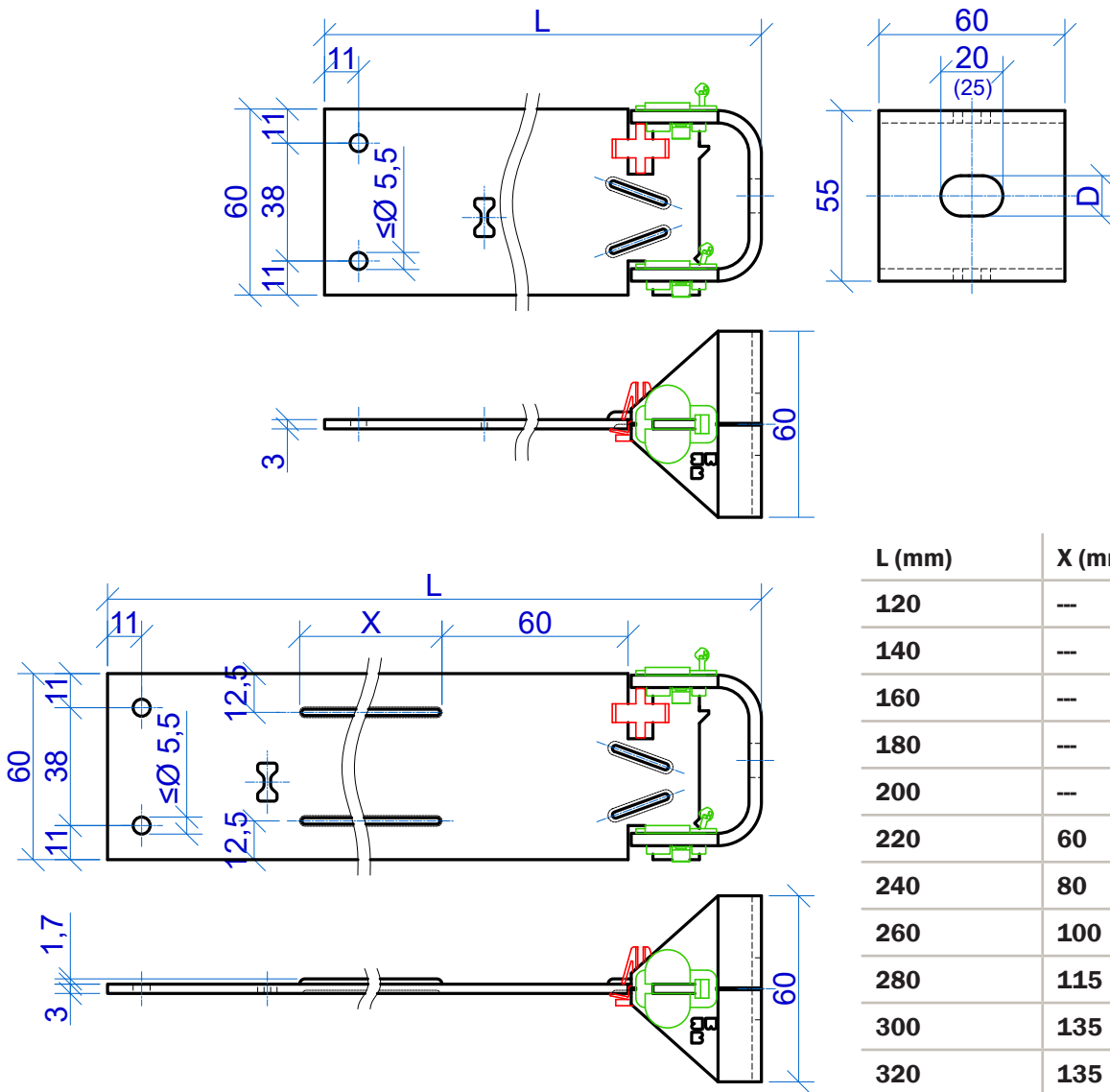
Facade holder

ZeLa Festpunkt-Set klein (ZeLa-Set-Z2)

ZeLa Fixed point-kit small (ZeLa-Kit-Z2)

Material: Konsole aus Aluminium / Schwert aus Edelstahl

Material: Console from aluminium / Guide bar from stainless steel



D = 11 / 15 mm (Standard)

D = Rundloch Ø 6,6 mm

D = 11 / 15 mm (standard)

D = circular hole Ø 6,6 mm

Fassadenhalter

Facade holder

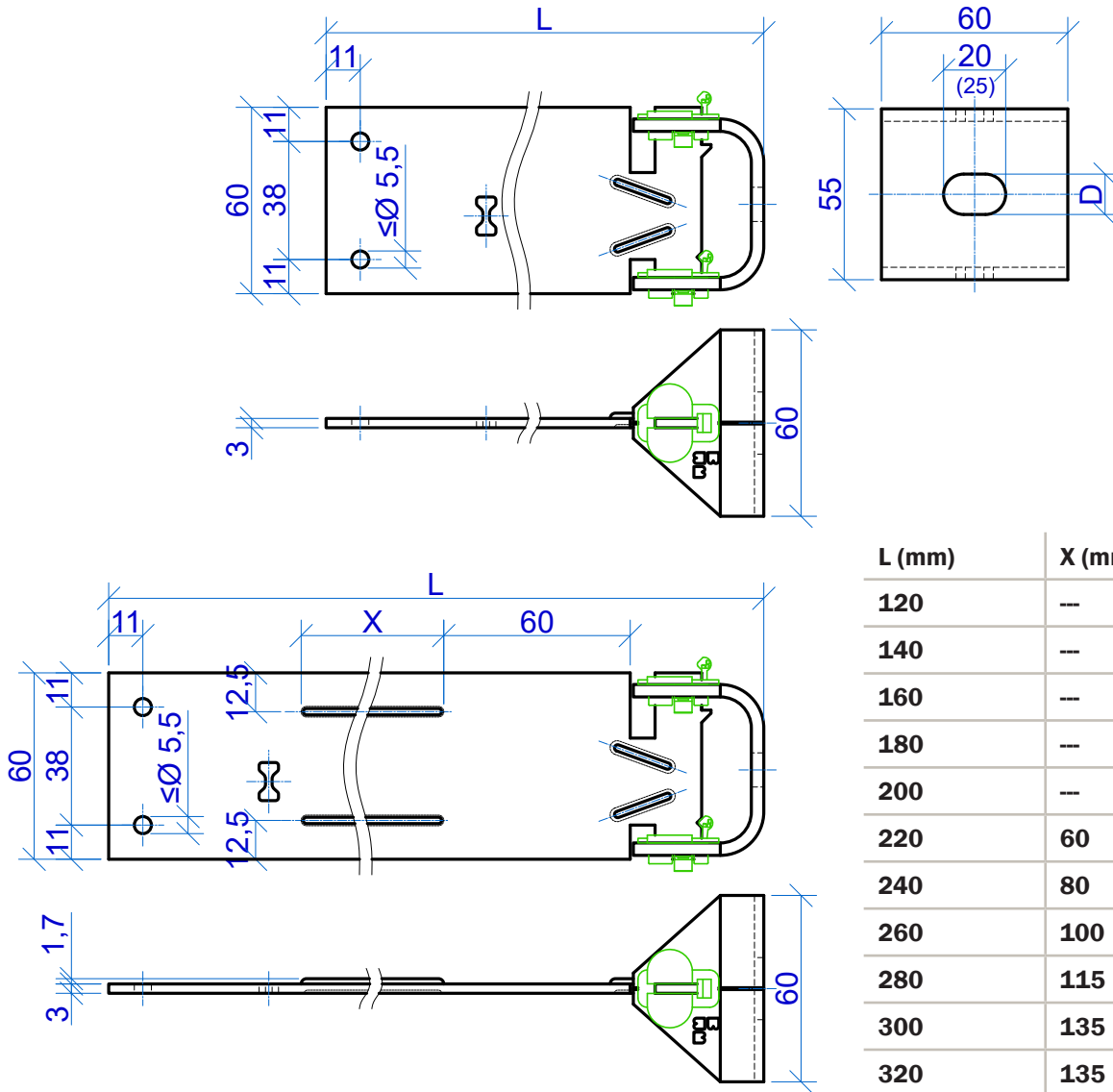
ZeLa Gleitpunkt-Set (ZeLa-Set-Z3)

ZeLa Sliding point-kit (ZeLa-Kit-Z3)



Material: Konsole aus Aluminium / Schwert aus Edelstahl

Material: Console from aluminium / Guide bar from stainless steel



D = 11 / 15 mm (Standard)

D = Rundloch Ø 6,6 mm

D = 11 / 15 mm (standard)

D = circular hole Ø 6,6 mm

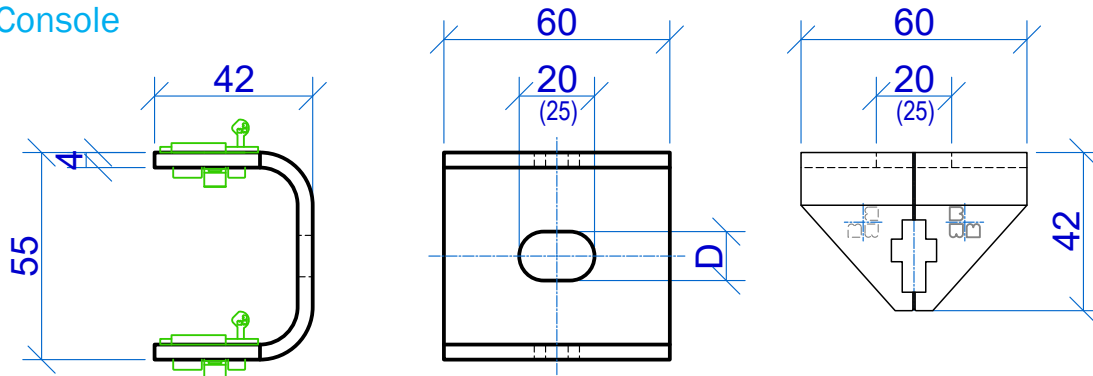
Systemkomponenten

System components

Material: Konsole aus Aluminium / Schwert aus Edelstahl
Material: Console from aluminium / Guide bar from stainless steel

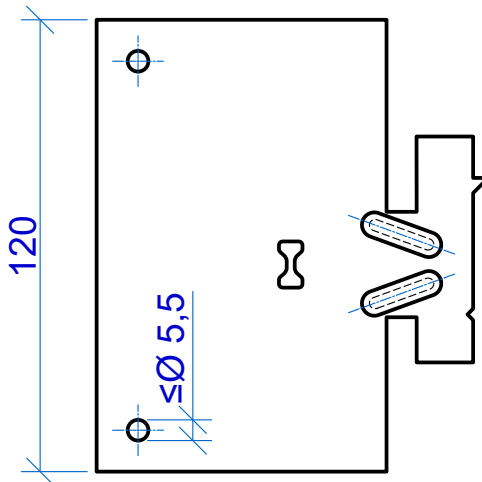
ZeLa - Konsole

ZeLa - Console



ZeLa - Festpunkt Schwert

ZeLa - Fixed point guide bar

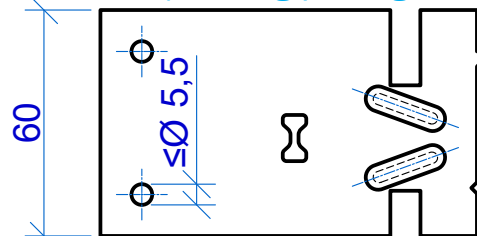


L = 120 / 140 / 160 / 180 / 200 mm

L = 220 / 240 / 260 / 280 / 300 / 320 mm
Mit Verprägungsrillen
With stamping grooves

ZeLa - Fest-/Gleitpunkt Schwert

ZeLa - Fixed/Sliding point guide bar

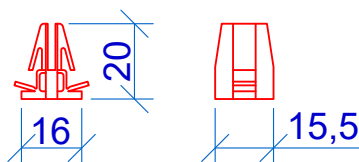


L = 120 / 140 / 160 / 180 / 200 mm

L = 220 / 240 / 260 / 280 / 300 / 320 mm
Mit Verprägungsrillen
With stamping grooves

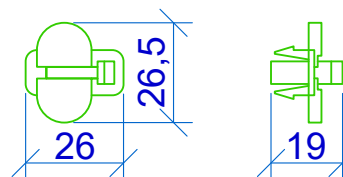
ZeLa - Festpunkt Clip

ZeLa - Fixed point clip



ZeLa - Kupplung

ZeLa - Coupling

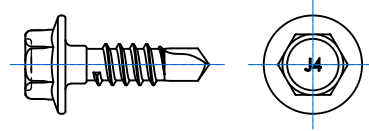


Zubehörteile

Accessories

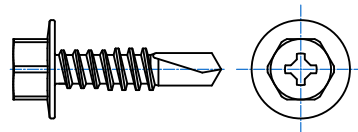
Bohrschraube JT4-3H/5-5,5x19

Drilling screw JT4-3H/5-5,5x19



Bohrschraube SDA5/3,5-8-H13-S4-5,5x22

Drilling screw SDA5/3,5-8-H13-S4-5,5x22



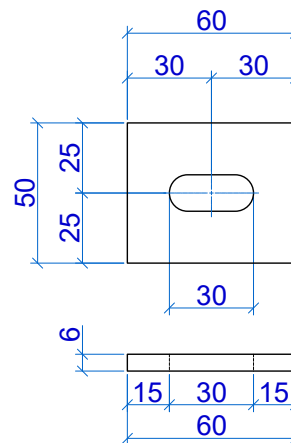
Weitere Verbindungsmittel auf Anfrage

Further connecting device on demand

Thermostop (selbstklebend)

Thermostop (self-adhesive)

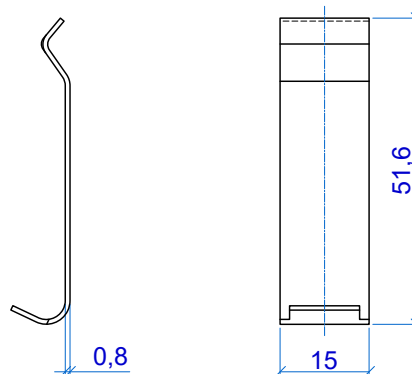
Art. 55050



Haltefeder (Edelstahl)

Inox-spline (Stainless steel)

Art. 20010

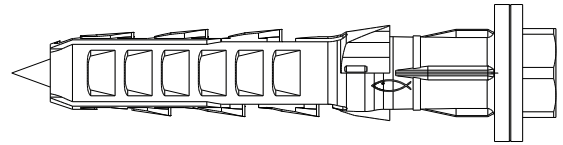


Zubehörteile

Accessories

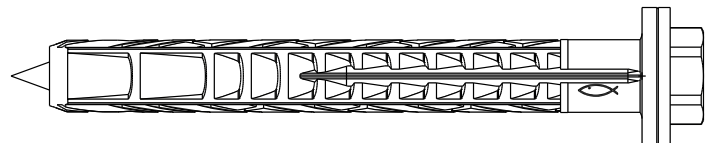
fischer Langschaftdübel SXR 10 x L FUS

fischer frame fixing SXR 10 x L FUS



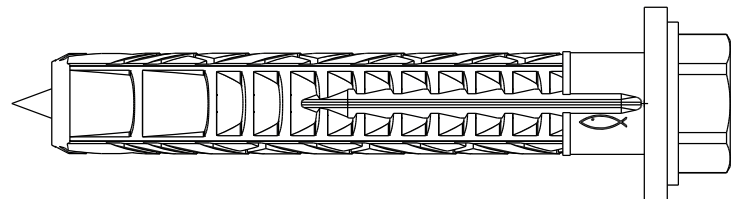
fischer Langschaftdübel SXRL 10 x L FUS

fischer frame fixing SXRL 10 x L FUS



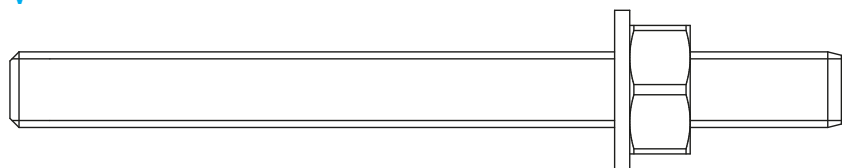
fischer Langschaftdübel SXRL 14 x L FUS

fischer frame fixing SXRL 14 x L FUS



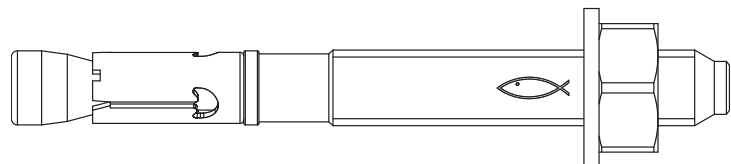
fischer Injektionssysteme FIS V

fischer injection systems FIS V



fischer Bolzenanker FAZ II / R

fischer bolt anchors FAZ II / R



Weitere Verankerungsmittel (auch Verankerung in Stahl/Holz/etc.): auf Anfrage
Further anchoring elements (also anchoring in steel/wood/etc.): on demand