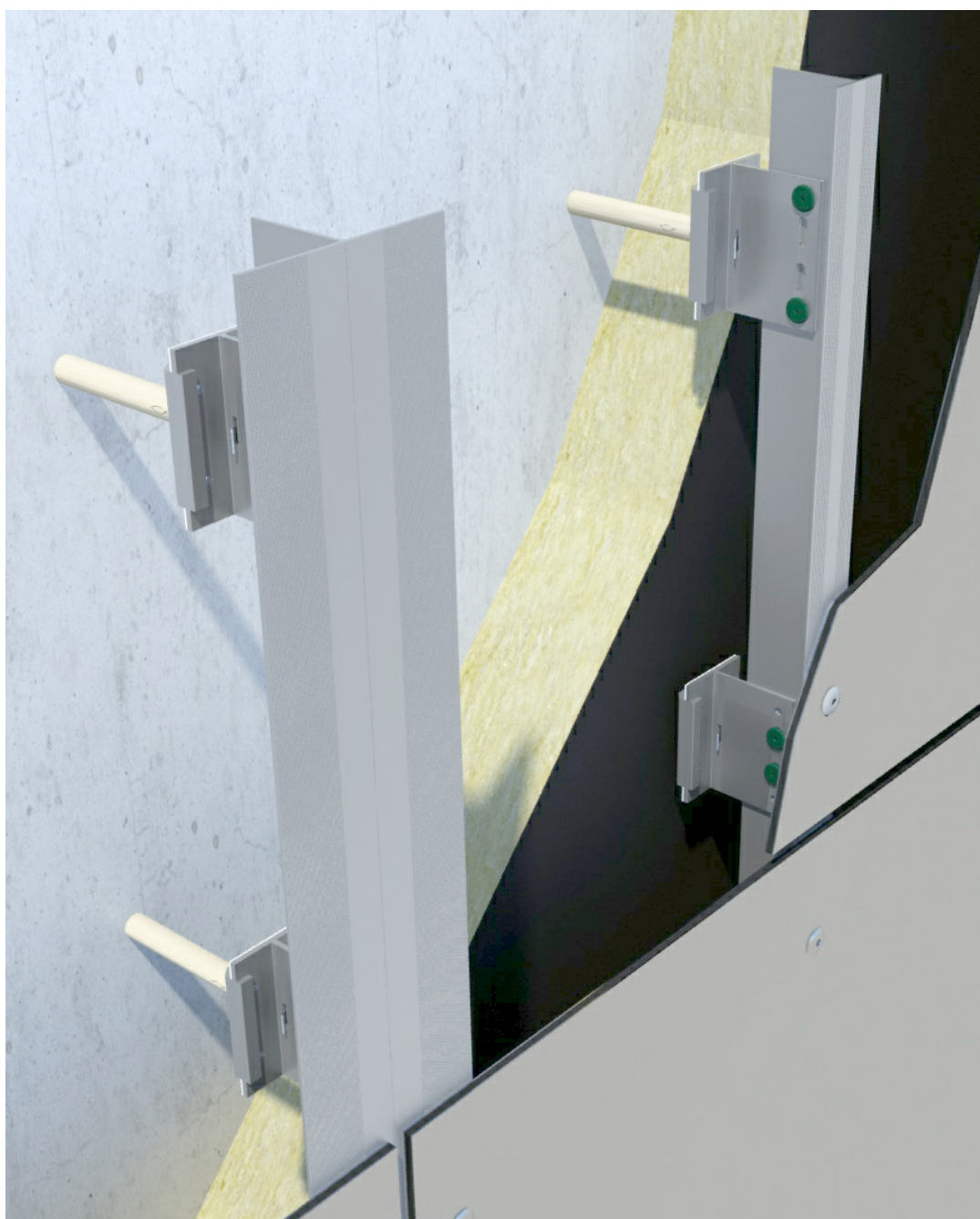


ATK 601

Technische Informationen

ATK 601
Technical Information

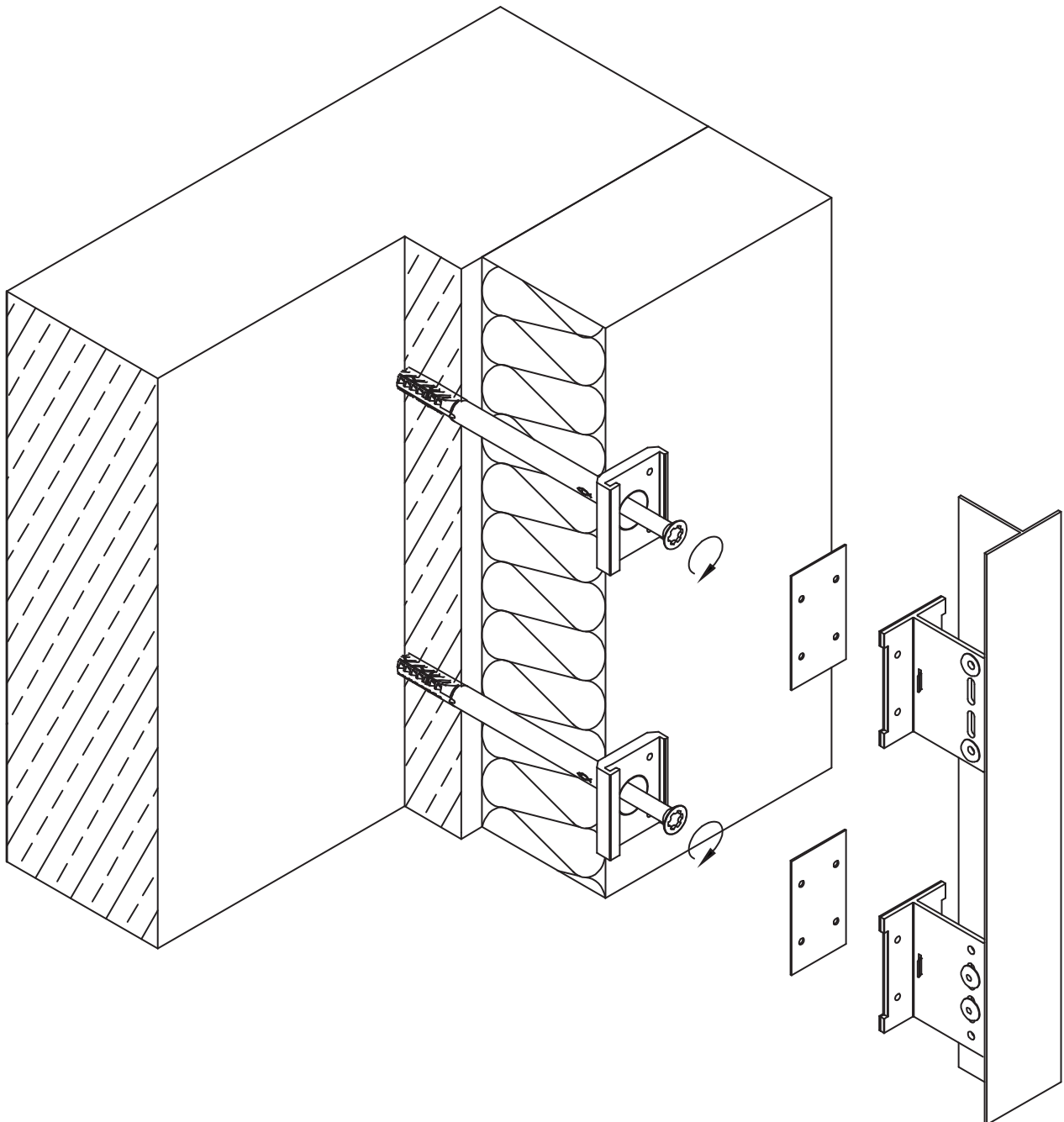


Konstruktionsbeispiel

Construction example

Ebene Fassadentafeln, sichtbar befestigt

Plane facade panels, visible fixing

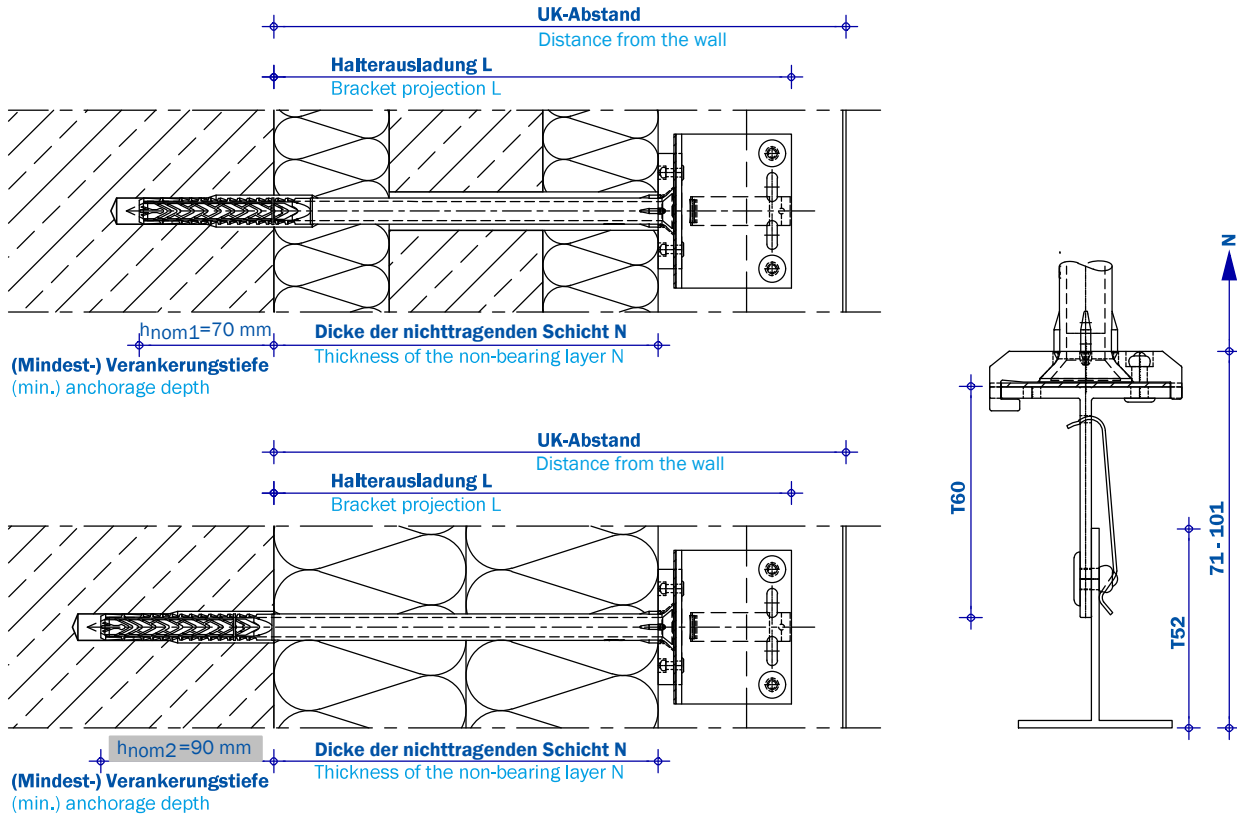


Wandabstände

Distance from the wall

Wandabstände + Planungsmaße, T-Konsole 60 mm + T-Profil 52 mm

Distances from wall + planning measures, T-bracket 60 mm + T-section 52 mm



| hnom1 = 70 mm T-Konsole / T-bracket 60 mm + T-Profil / T-section 52 mm | | | | | | | | | | |
|--|----------------------------|----------------------------|--------------|---------|-----------------|---------|---------|---------|-----------------|---------|
| hnom2 = 90 mm T-Konsole / T-bracket 60 mm + T-Profil / T-section 52 mm | | | | | | | | | | |
| Dübellänge Plug length | Artikel-Nr. Article-no. | Artikel-Nr. Article-no. | N | | UK Abstand (mm) | | N | L | UK Abstand (mm) | |
| | | | hnom1 = 70mm | L | Min. | Max. | | | hnom2 = 90mm | Min. |
| 80 | E-14/ 80 | Z-14/ 80 | 2 | 71 | 73 | 103 | ----- | ----- | ----- | ----- |
| 100 | E-14/ 100 | Z-14/ 100 | 22 | 91 | 93 | 123 | 2 | 71 | 73 | 103 |
| 120 | E-14/ 120 | Z-14/ 120 | 42 | 111 | 113 | 143 | 22 | 91 | 93 | 123 |
| 140 | E-14/ 140 | Z-14/ 140 | 62 | 131 | 133 | 163 | 42 | 111 | 113 | 143 |
| 160 | E-14/ 160 | Z-14/ 160 | 82 | 151 | 153 | 183 | 62 | 131 | 133 | 163 |
| 180 | E-14/ 180 | Z-14/ 180 | 102 | 171 | 173 | 203 | 82 | 151 | 153 | 183 |
| 200 | E-14/ 200 | Z-14/ 200 | 122 | 191 | 193 | 223 | 102 | 171 | 173 | 203 |
| 230 | E-14/ 230 | Z-14/ 230 | 152 | 221 | 223 | 253 | 132 | 201 | 203 | 233 |
| 260 | E-14/ 260 | Z-14/ 260 | 182 | 251 | 253 | 283 | 162 | 231 | 233 | 263 |
| 300 | E-14/ 300 | Z-14/ 300 | 212/222 | 281/291 | 283/293 | 313/323 | 192/202 | 261/271 | 263/273 | 293/303 |
| 330 | E-14/ 330 | Z-14/ 330 | 242/252 | 311/321 | 313/323 | 343/353 | 222/232 | 291/301 | 293/303 | 323/333 |
| 360 | E-14/ 360 | Z-14/ 360 | 272/282 | 341/351 | 343/353 | 373/383 | 252/262 | 321/331 | 323/333 | 353/363 |

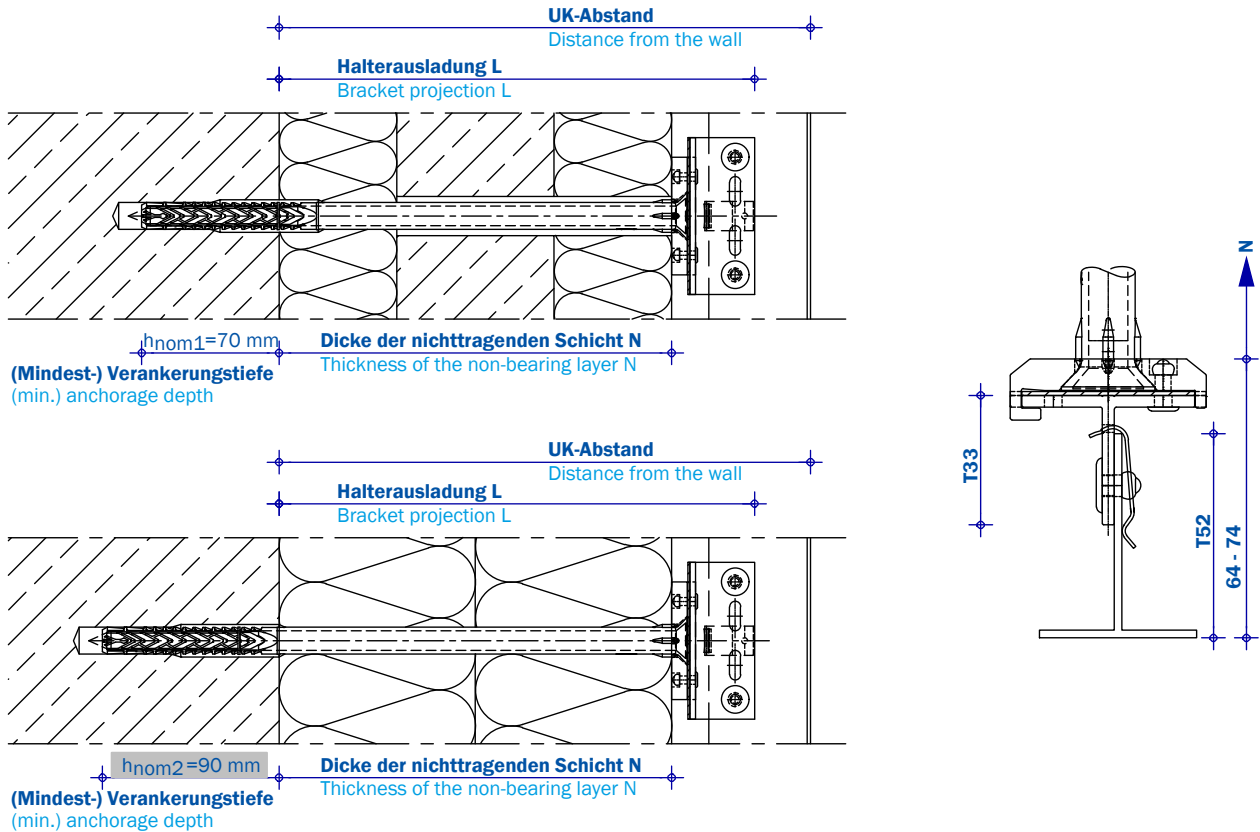
* Z = Schraube verzinkt / screw galvanized, E = Schraube Edelstahl / screw stainless steel

Wandabstände

Distance from the wall

Wandabstände + Planungsmaße, T-Konsole 33 mm + T-Profil 52 mm

Distances from wall + planning measures, T-bracket 33 mm + T-section 52 mm

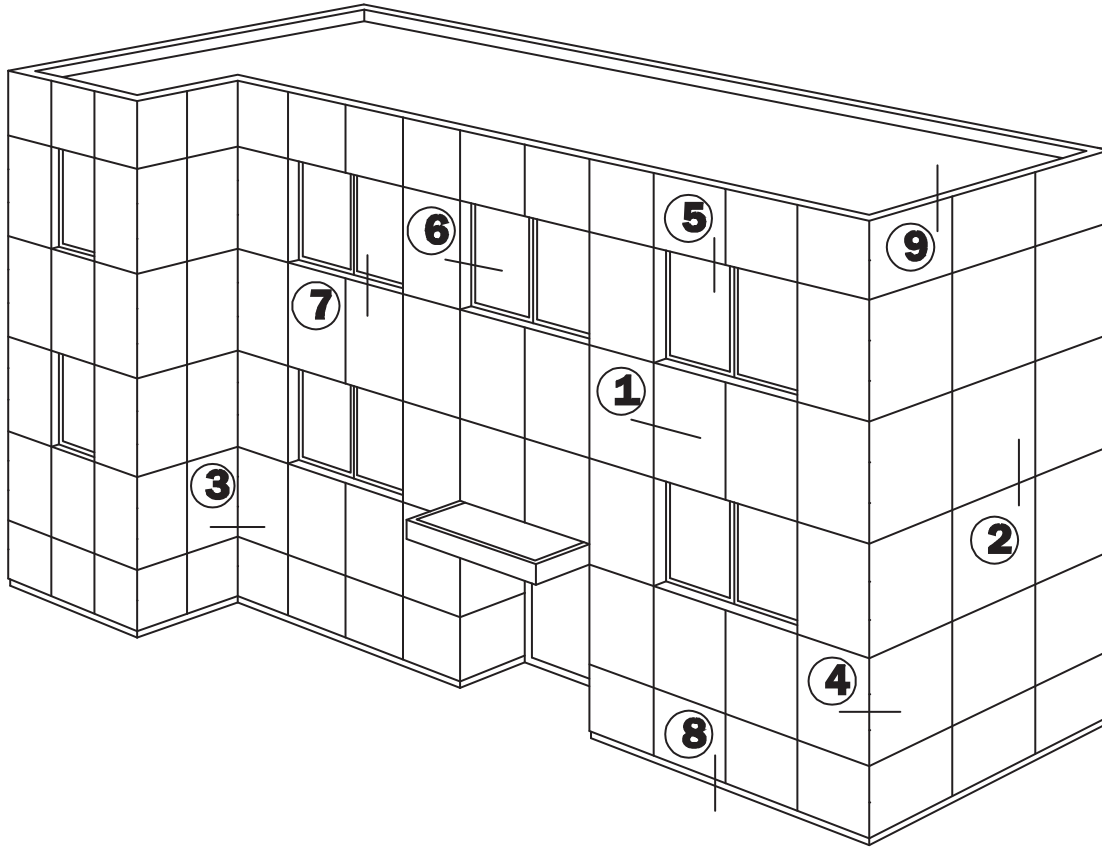


| h _{nom1} = 70 mm T-Konsole / T-bracket 33 mm + T-Profil / T-section 52 mm | | | | | | | | | | |
|--|----------------------------|----------------------------|--------------------------|---------|-----------------|---------|---------|---------|--------------------------|---------|
| h _{nom2} = 90 mm T-Konsole / T-bracket 33 mm + T-Profil / T-section 52 mm | | | | | | | | | | |
| Dübellänge Plug length | Artikel-Nr. Article-no. | Artikel-Nr. Article-no. | N | | UK Abstand (mm) | | N | L | UK Abstand (mm) | |
| | | | h _{nom1} = 70mm | L | Min. | Max. | | | h _{nom2} = 90mm | Min. |
| 80 | E-14/ 80 | Z-14/ 80 | 2 | 44 | 66 | 76 | ----- | ----- | ----- | ----- |
| 100 | E-14/ 100 | Z-14/ 100 | 12/22 | 54/64 | 76/86 | 96 | 2 | 44 | 66 | 76 |
| 120 | E-14/ 120 | Z-14/ 120 | 32/42 | 74/84 | 96/106 | 116 | 12/22 | 54/64 | 76/86 | 96 |
| 140 | E-14/ 140 | Z-14/ 140 | 52/62 | 94/104 | 116/126 | 136 | 32/42 | 74/84 | 96/106 | 116 |
| 160 | E-14/ 160 | Z-14/ 160 | 72/82 | 114/124 | 136/146 | 156 | 52/62 | 94/104 | 116/126 | 136 |
| 180 | E-14/ 180 | Z-14/ 180 | 92/102 | 134/144 | 156/166 | 176 | 72/82 | 114/124 | 136/146 | 156 |
| 200 | E-14/ 200 | Z-14/ 200 | 112/122 | 154/164 | 176/186 | 196 | 92/102 | 134/144 | 156/166 | 176 |
| 230 | E-14/ 230 | Z-14/ 230 | 132/152 | 174/194 | 196/216 | 226 | 112/132 | 154/174 | 176/196 | 206 |
| 260 | E-14/ 260 | Z-14/ 260 | 162/182 | 204/224 | 226/246 | 256 | 142/162 | 184/204 | 206/226 | 236 |
| 300 | E-14/ 300 | Z-14/ 300 | 192/222 | 234/264 | 256/286 | 266/296 | 172/202 | 214/244 | 236/266 | 246/276 |
| 330 | E-14/ 330 | Z-14/ 330 | 234/252 | 274/294 | 296/316 | 306/326 | 212/232 | 254/274 | 276/296 | 286/306 |
| 360 | E-14/ 360 | Z-14/ 360 | 262/282 | 304/324 | 326/346 | 356/356 | 242/262 | 284/304 | 306/326 | 316/336 |

* Z = Schraube verzinkt / screw galvanized, E = Schraube Edelstahl / screw stainless steel

Schnittübersicht

Section overview



Schnitt 1
Section 1

Horizontalschnitt
Horizontal section

Schnitt 6
Section 6

Fensterleibung
Window embrasure

Schnitt 2
Section 2

Vertikalschnitt
Vertical section

Schnitt 7
Section 7

Fensterbank
Window sill

Schnitt 3
Section 3

Innenecke
Internal corner

Schnitt 8
Section 8

Sockelabschluss
Lower edge (bottom end)

Schnitt 4
Section 4

Außenecke
External corner

Schnitt 9
Section 9

Attikaabschluss
Attic connection (top end)

Schnitt 5
Section 5

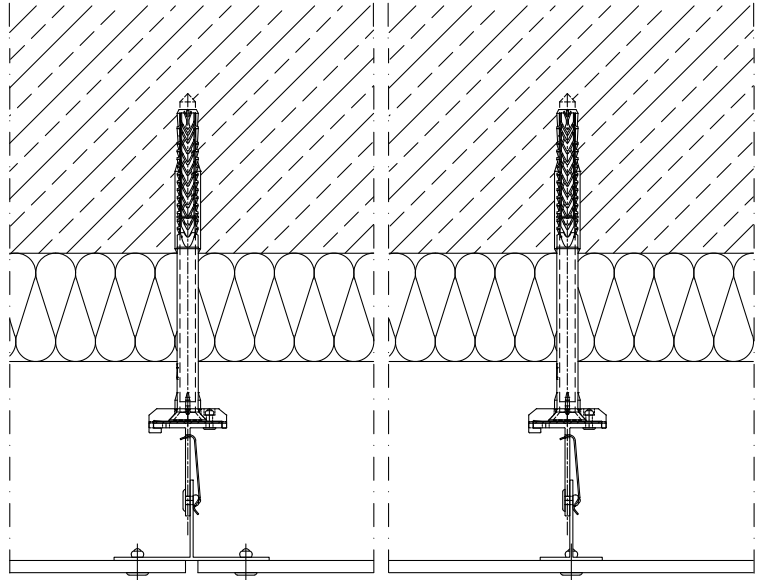
Jalousiekasten
Roller-blind box

Schnitte

Sections

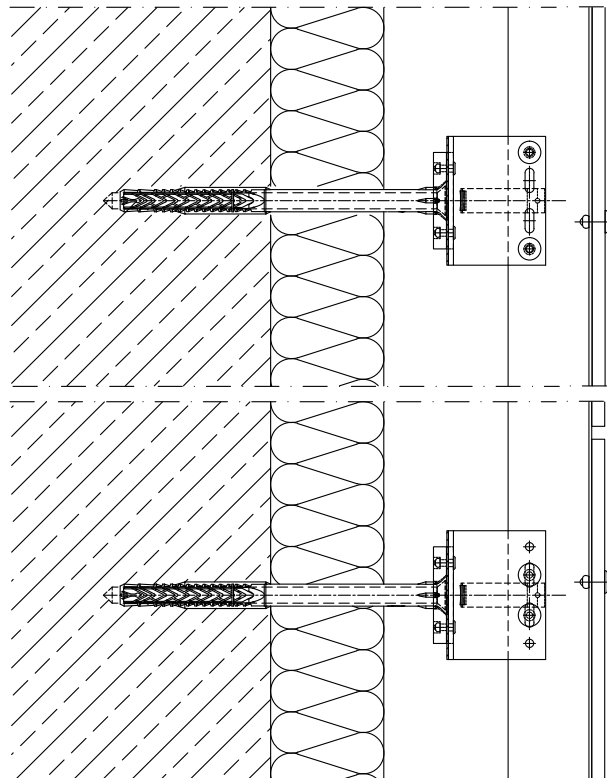
Schnitt 1 Horizontalschnitt

Section 1 Horizontal section



Schnitt 2 Vertikalschnitt

Section 2 Vertical section



Angrenzende Bauteile sind hier nur schematisch dargestellt. Die konkrete Detailausbildung ist unter Beachtung von Normen, Vorschriften und Richtlinien objektbezogen separat zu planen.

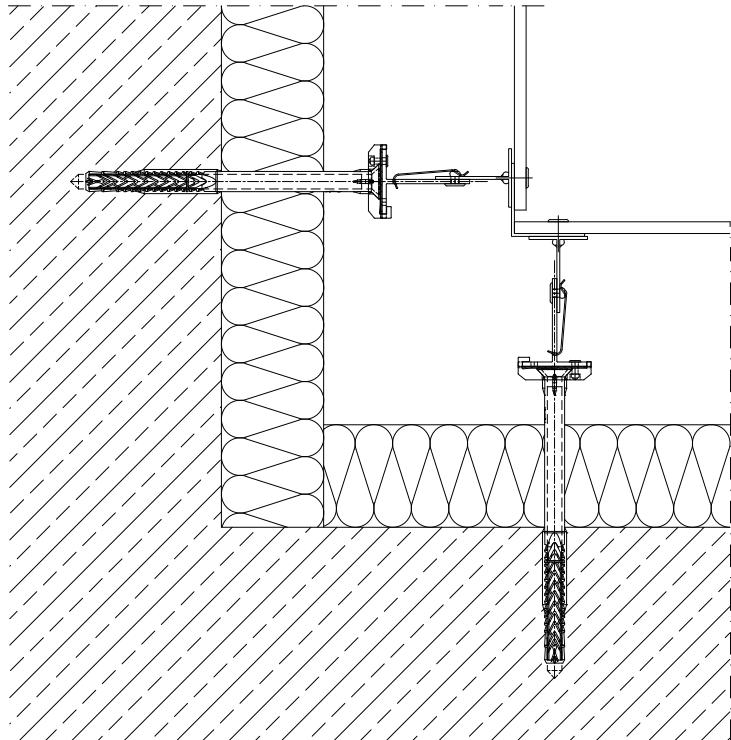
Adjacent components are shown here only schematically. The concrete details are to be planned separately in respect of the particular building involved. This must be done in accordance with the relevant standards, regulations and guidelines.

Schnitte

Sections

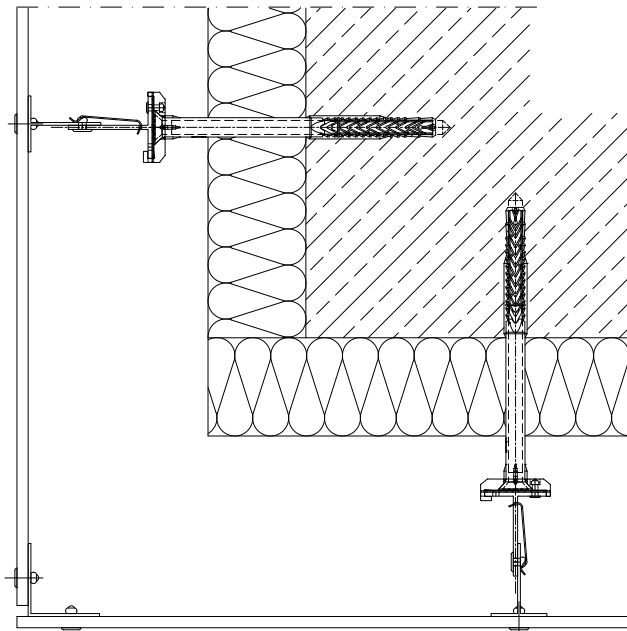
Schnitt 3 Innenecke

Section 3 Internal corner



Schnitt 4 Außenecke

Section 4 External corner



Angrenzende Bauteile sind hier nur schematisch dargestellt. Die konkrete Detailausbildung ist unter Beachtung von Normen, Vorschriften und Richtlinien objektbezogen separat zu planen.

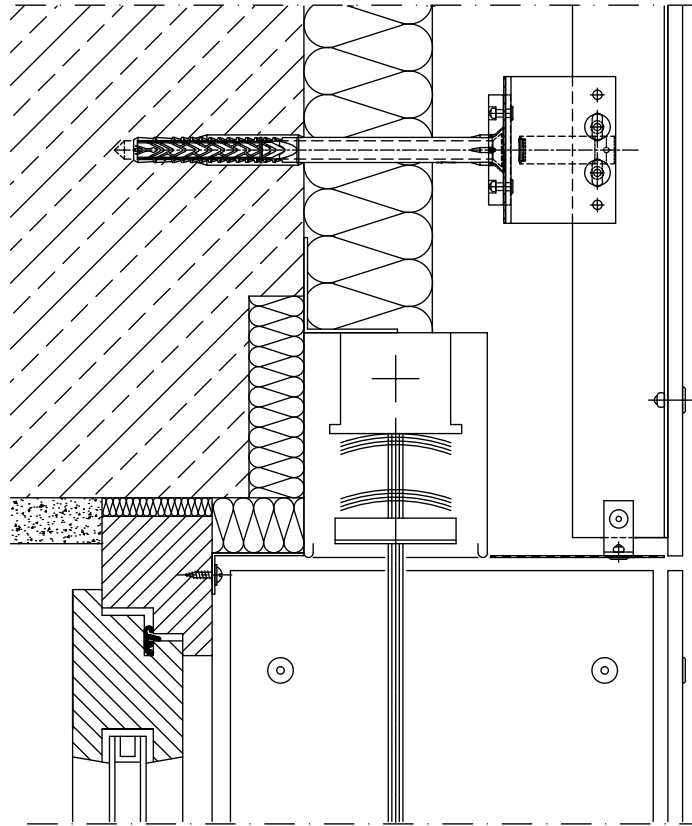
Adjacent components are shown here only schematically. The concrete details are to be planned separately in respect of the particular building involved. This must be done in accordance with the relevant standards, regulations and guidelines.

Schnitte

Sections

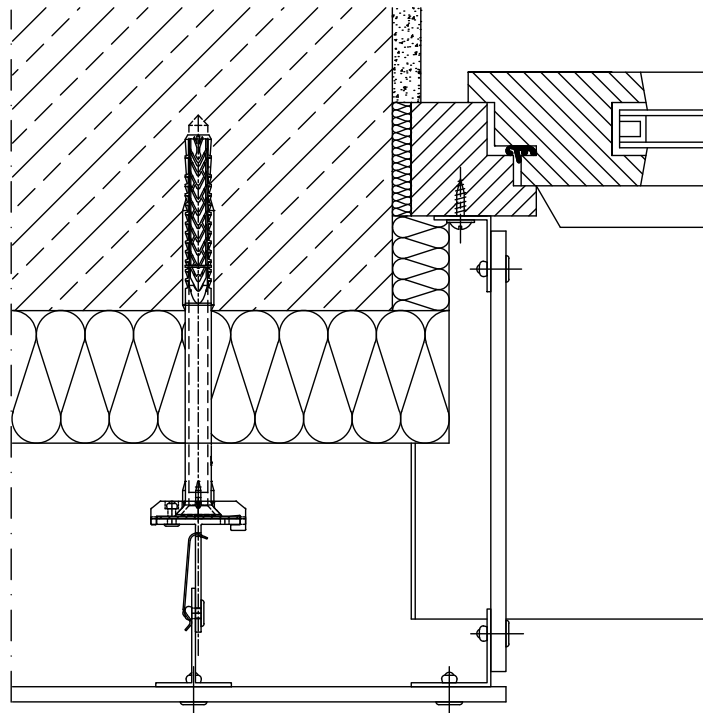
Schnitt 5 Jalousiekasten

Section 5 Roller-blind box



Schnitt 6 Fensterleibung

Section 6 Window embrasure



Angrenzende Bauteile sind hier nur schematisch dargestellt. Die konkrete Detailausbildung ist unter Beachtung von Normen, Vorschriften und Richtlinien objektbezogen separat zu planen.

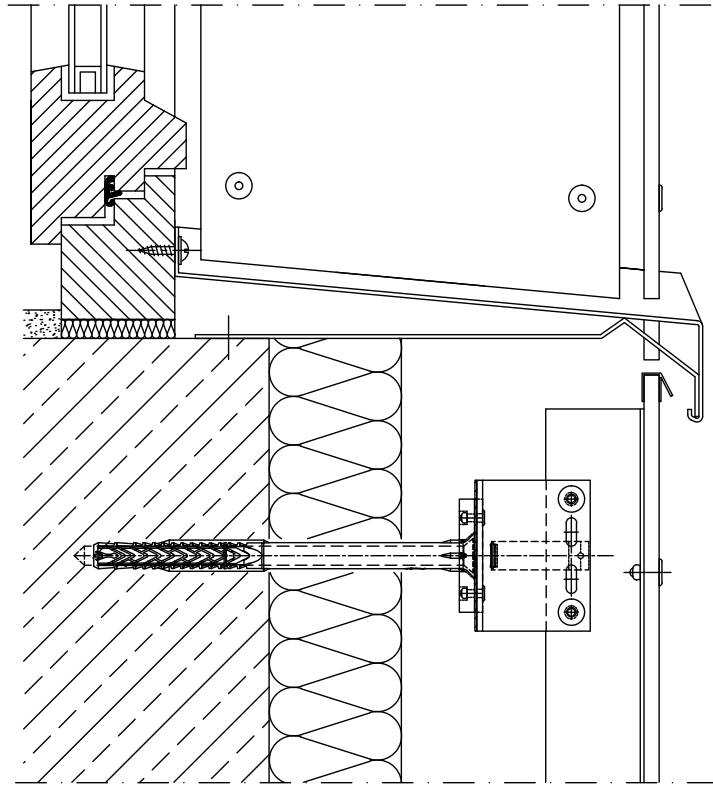
Adjacent components are shown here only schematically. The concrete details are to be planned separately in respect of the particular building involved. This must be done in accordance with the relevant standards, regulations and guidelines.

Schnitte

Sections

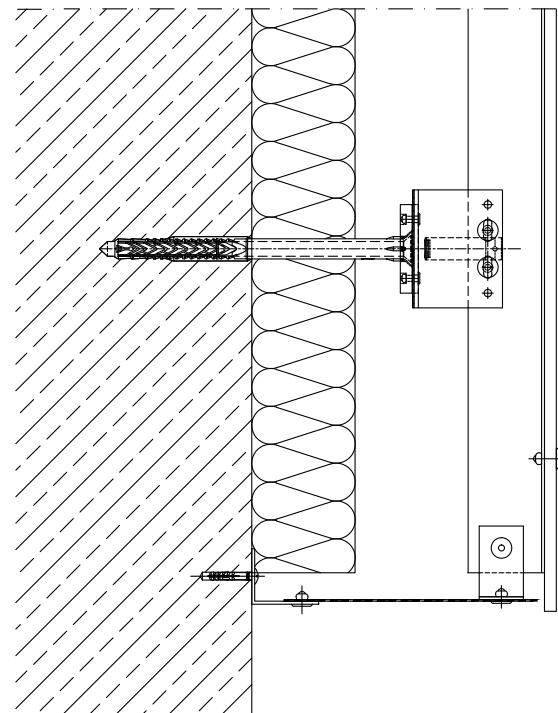
Schnitt 7 Fensterbank

Section 7 Window sill



Schnitt 8 Sockelabschluss

Section 8 Lower edge



Angrenzende Bauteile sind hier nur schematisch dargestellt. Die konkrete Detailausbildung ist unter Beachtung von Normen, Vorschriften und Richtlinien objektbezogen separat zu planen.

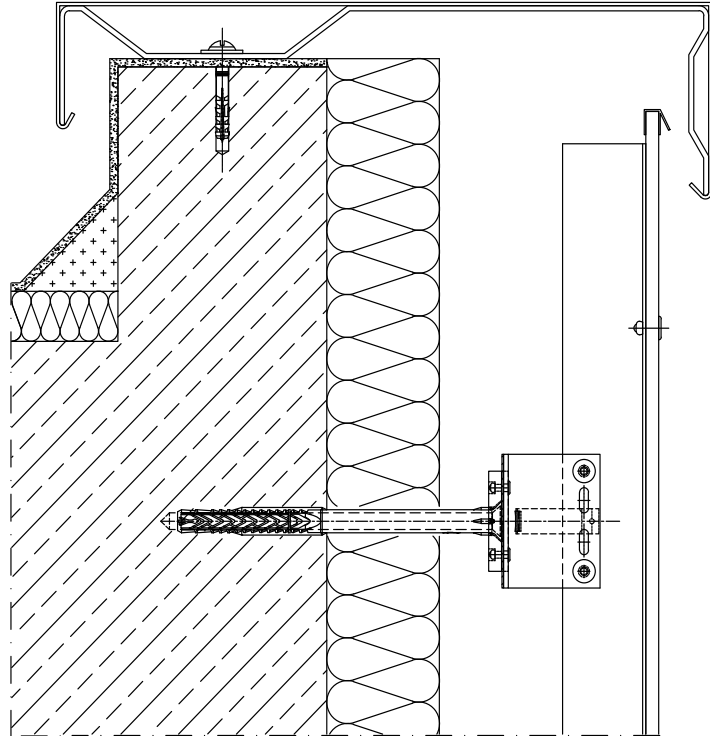
Adjacent components are shown here only schematically. The concrete details are to be planned separately in respect of the particular building involved. This must be done in accordance with the relevant standards, regulations and guidelines.

Schnitte

Sections

Schnitt 9 Attikaabschluss

Section 9 Attic connection



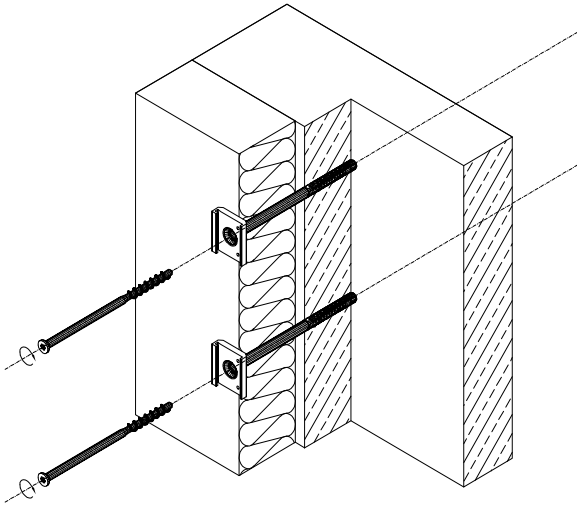
Angrenzende Bauteile sind hier nur schematisch dargestellt. Die konkrete Detailausbildung ist unter Beachtung von Normen, Vorschriften und Richtlinien objektbezogen separat zu planen.

Adjacent components are shown here only schematically. The concrete details are to be planned separately in respect of the particular building involved. This must be done in accordance with the relevant standards, regulations and guidelines.

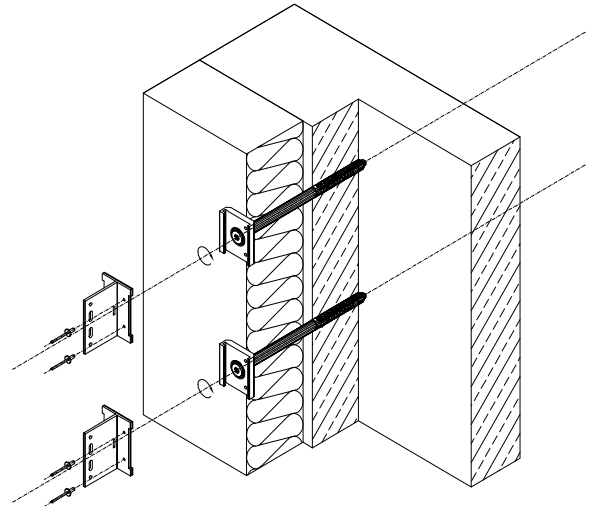
Montagefolge

Mounting sequence

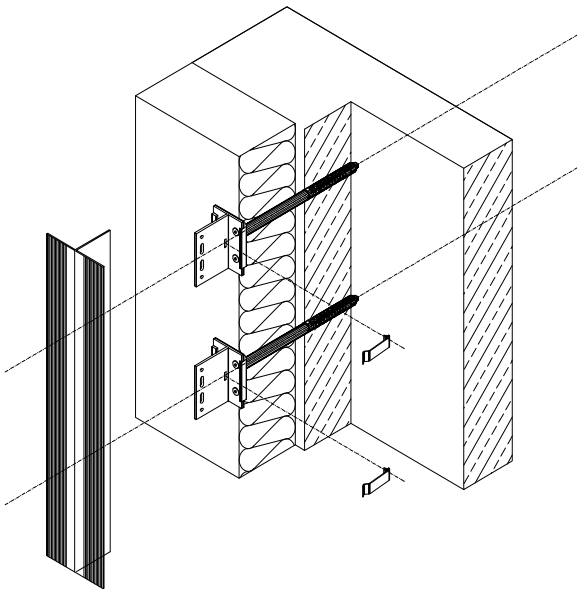
1



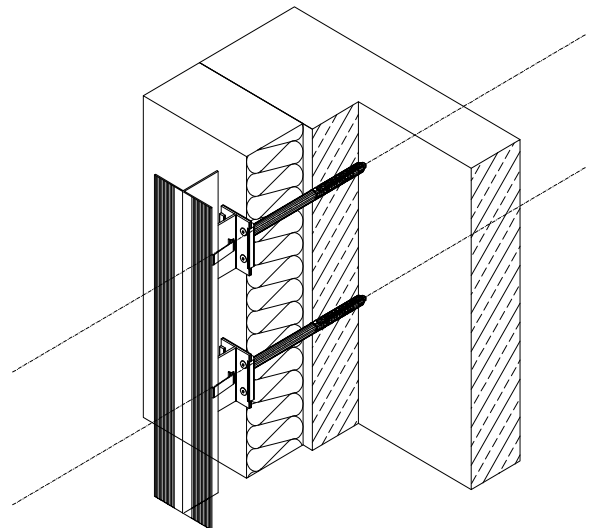
2



3



4



Befestigungssatz

Fixing set

Grundelement

Basic element

ATK 601 Befestigungssatz

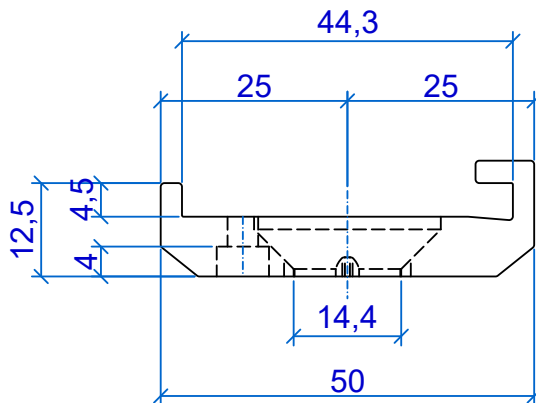
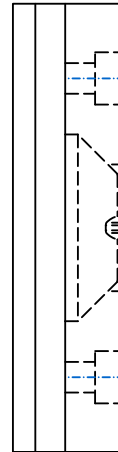
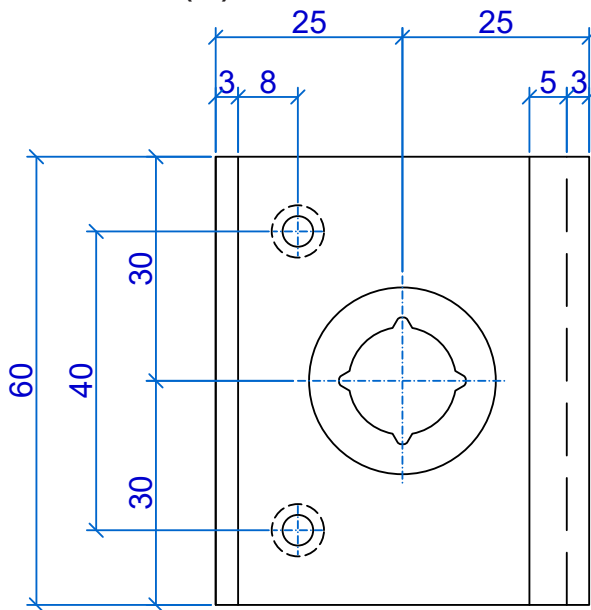
Set bestehend aus:

- Grundelement
- T-Stück
- Verbindungsniete (2x)
- Dübel Ø 14mm (1x)

ATK 601 fixing kit

Set consisting of:

- Basic element
- T-bracket
- Connecting rivet (2x)
- Frame fixing plug Ø 14mm (1x)

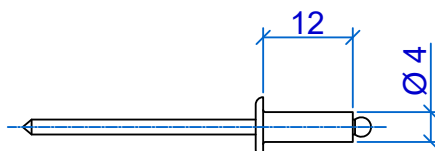


Verbindungsniete (2x)

Connecting rivet (2x)

Spezialniet 4x12 Alu/Niro

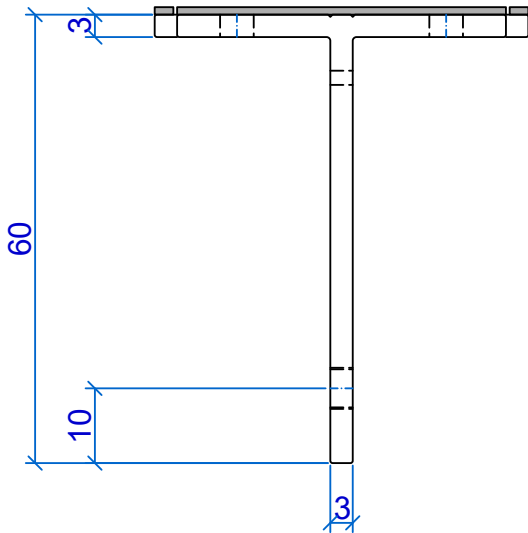
Special rivet 4x12 aluminium/stainless steel



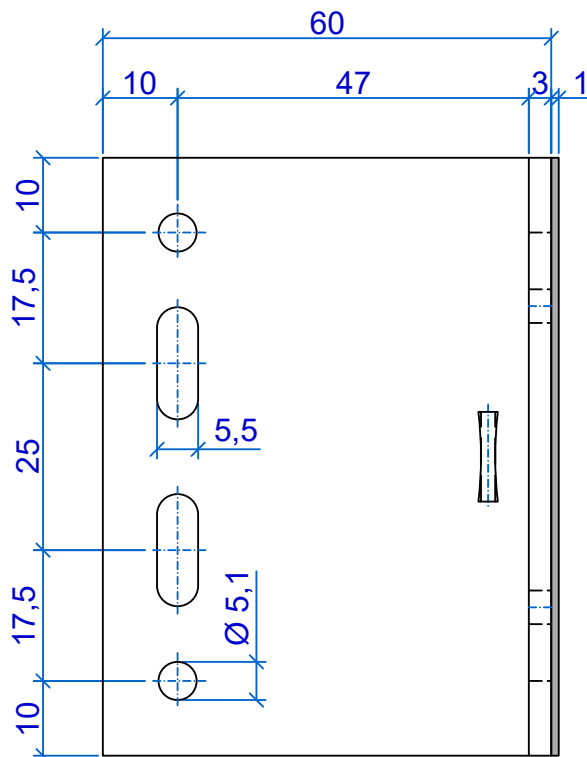
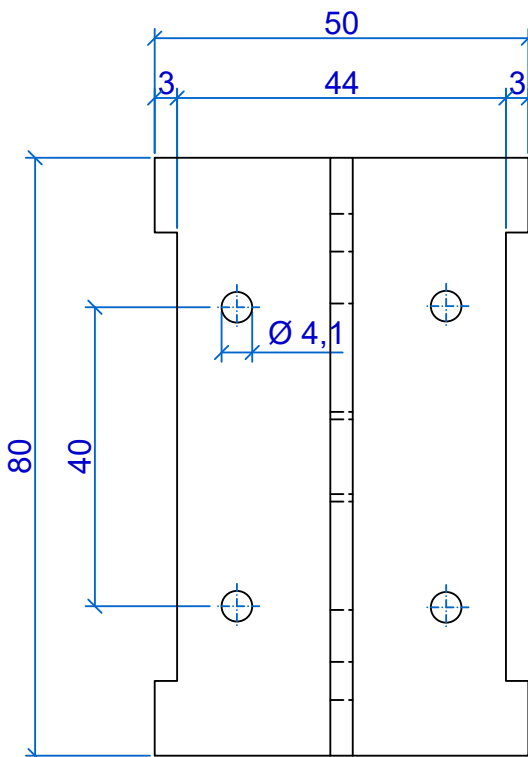
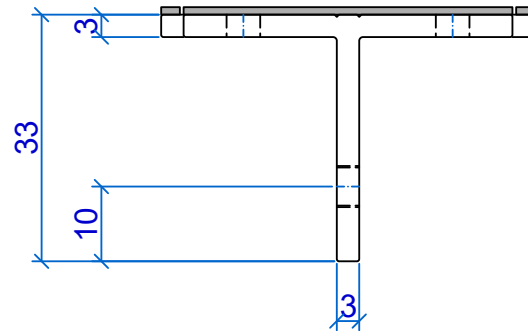
Befestigungssatz

Fixing set

T-Stück 60 mm
T-Bracket 60 mm



T-Stück 33 mm
T-Bracket 33 mm



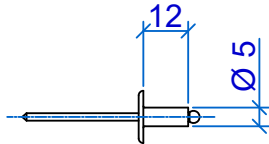
Befestigungssatz

Fixing set

BWM-Spezialniet SNA 5x12 K 14 Alu-Niro (grün eloxiert)

BWM-Special rivet SNA 5x12 K 14 aluminium-stainless steel (green anodized)

Art. 51214



fischer Rahmendübel SXRL 14 x L

fischer frame fixing SXRL 14 x L

