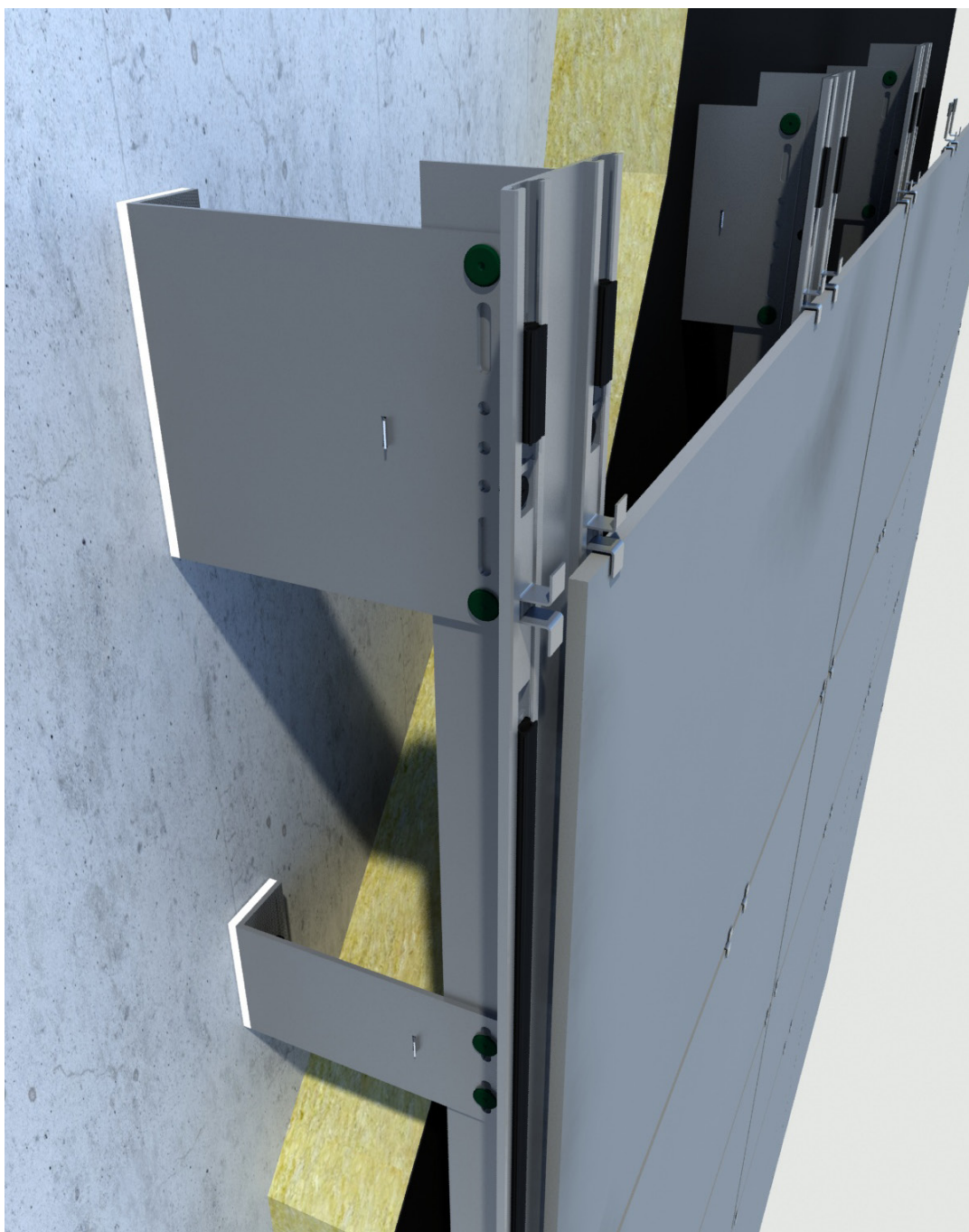


ATK 102 Minor / ATK 102 Technische Informationen

ATK 102 Minor / ATK 102
Technical Information

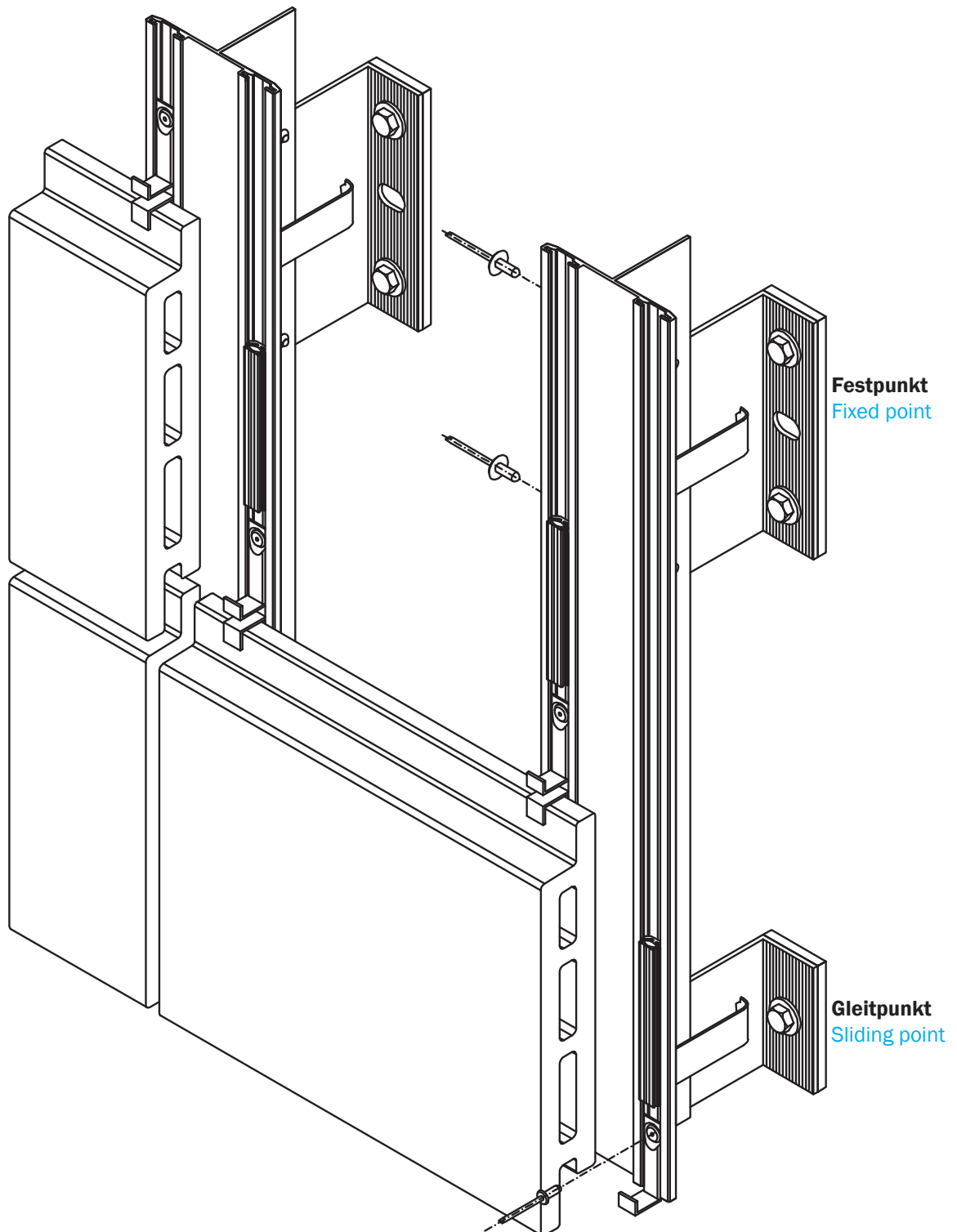


Konstruktionsbeispiel

Construction example

Profilierte Terrakotta/Keramik, verdeckte Klammerbefestigung

Profiled terracotta/ceramics, hidden clamp fixing

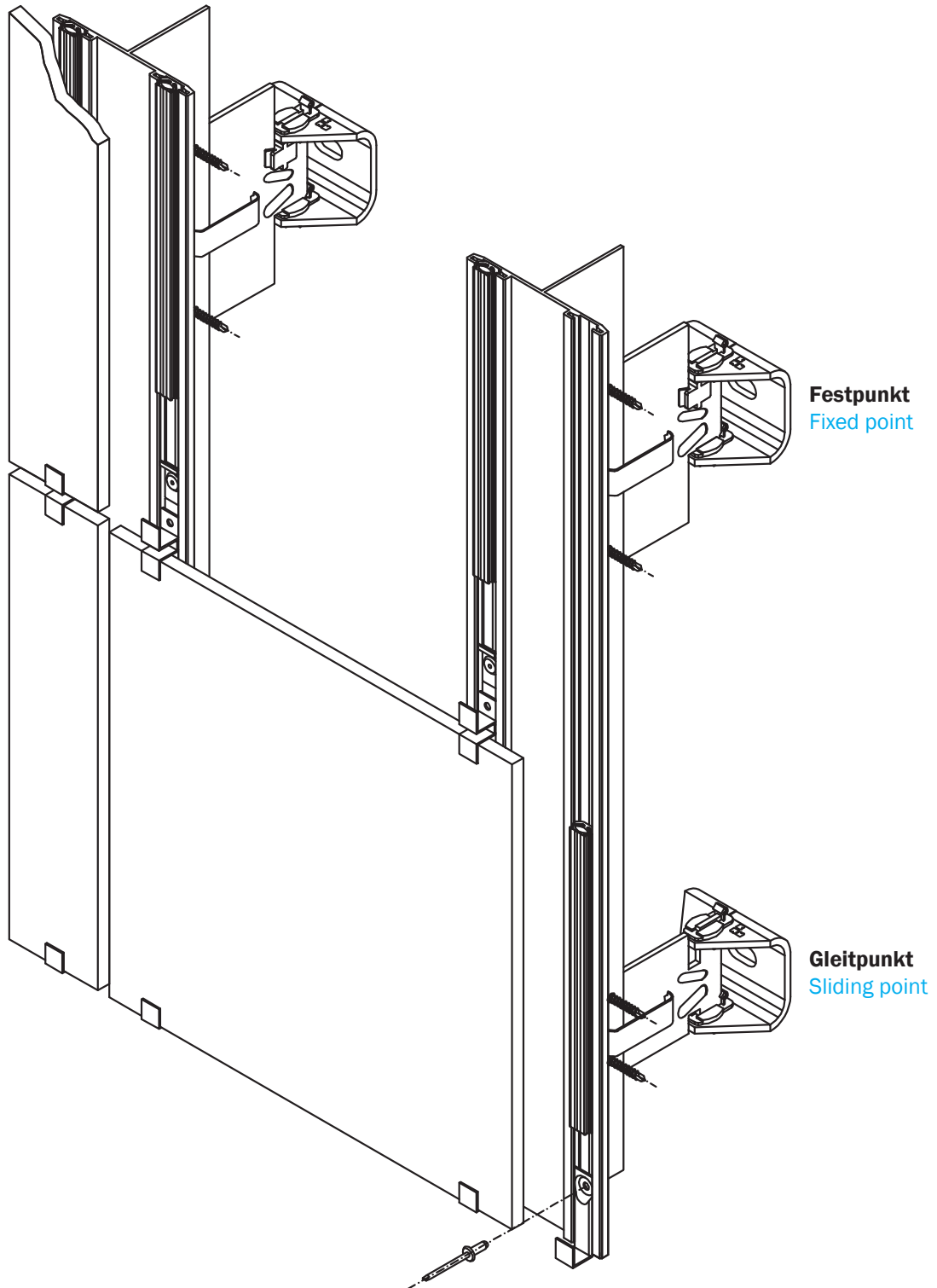


Konstruktionsbeispiel

Construction example

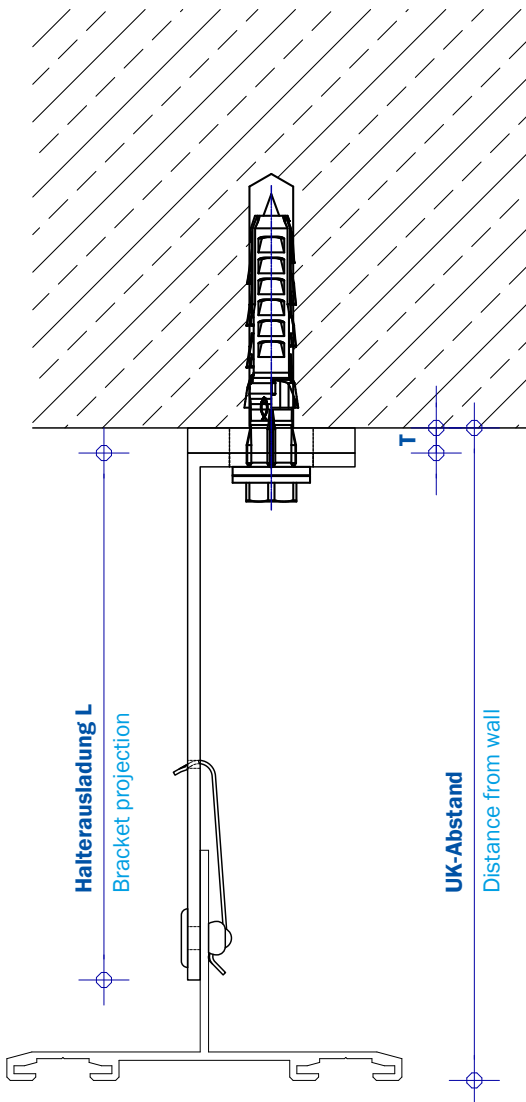
Ebene Platten/Keramik, variable Klammerbefestigung

Plane panels/ceramic tiles, variable clamp fixing



Wandabstände

Distance from the wall



Halteausladung L (mm) Bracket projection L (mm)	UK-Abstand (mm) Distance from the wall (mm)
40	58 + T bis / up to 75 + T
60	67 + T bis / up to 95 + T
80	87 + T bis / up to 115 + T
100	107 + T bis / up to 135 + T
120	127 + T bis / up to 155+ T
140	147 + T bis / up to 175+ T
160	167 + T bis / up to 195 + T
180	187 + T bis / up to 215 + T
200	207 + T bis / up to 235 + T
220	227 + T bis / up to 255 + T
240	247 + T bis / up to 275 + T
260	267 + T bis / up to 295 + T
280	287 + T bis / up to 315 + T
300	307 + T bis / up to 335 + T
320	327 + T bis / up to 355 + T

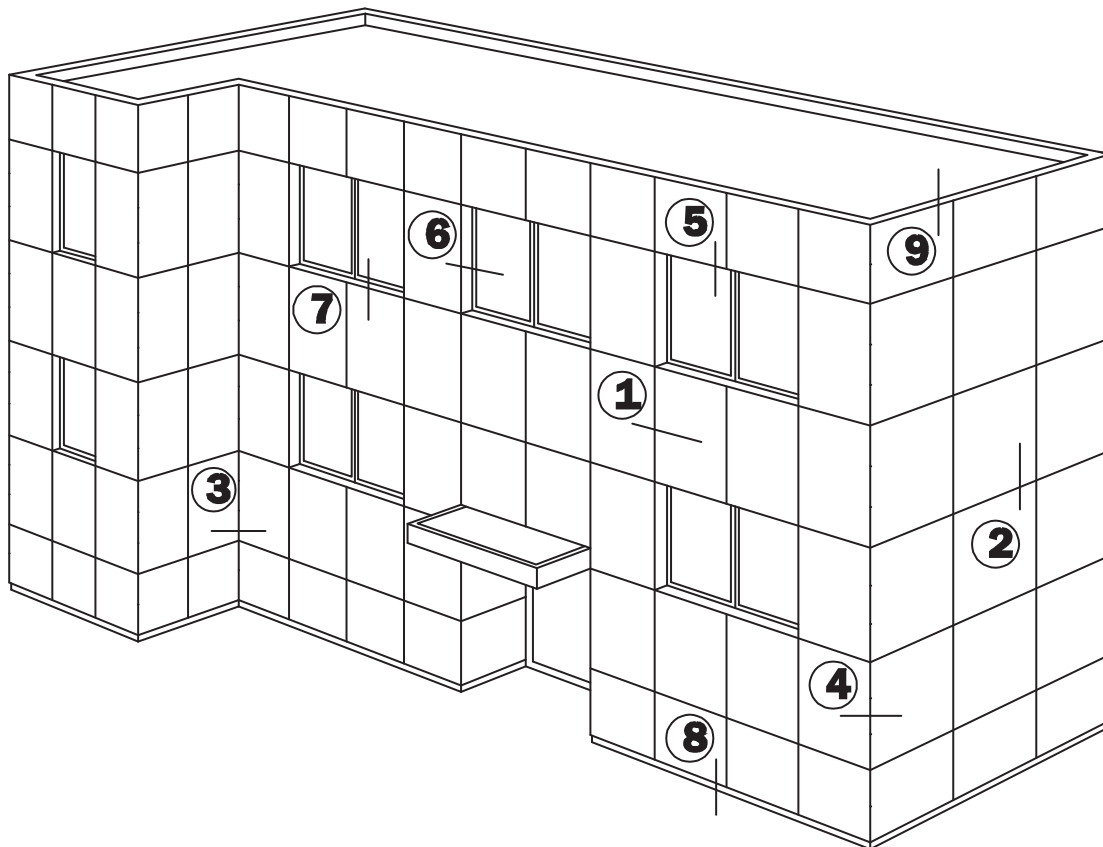
Sonderlängen und Sonderhalter auf Anfrage
Special lengths and special brackets on demand

T = Dicke BWM-Thermostop, T = 6 mm

T = Thickness of the BWM-Thermal separating layer, T = 6 mm

Schnittübersicht

Section overview



Schnitt 1
Section 1

Horizontalschnitt
Horizontal section

Schnitt 6
Section 6

Fensterleibung
Window embrasure

Schnitt 2
Section 2

Vertikalschnitt
Vertical section

Schnitt 7
Section 7

Fensterbank
Window sill

Schnitt 3
Section 3

Innenecke
Internal corner

Schnitt 8
Section 8

Sockelabschluss
Lower edge (bottom end)

Schnitt 4
Section 4

Außenecke
External corner

Schnitt 9
Section 9

Attikaabschluss
Attic connection (top end)

Schnitt 5
Section 5

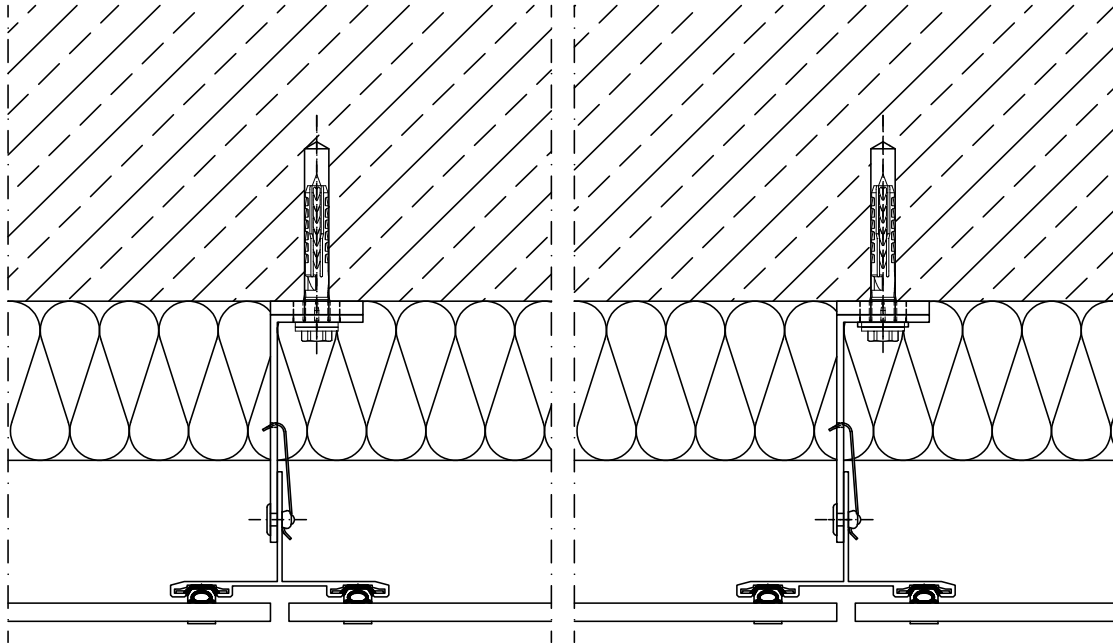
Jalousiekasten
Roller-blind box

Schnitte

Sections

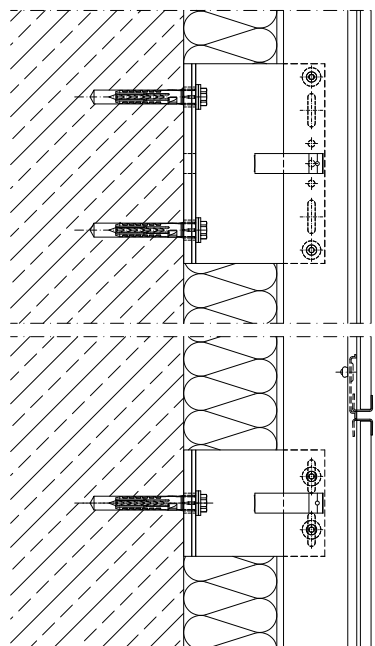
Schnitt 1 Horizontalschnitt

Section 1 Horizontal section



Schnitt 2 Vertikalschnitt

Section 2 Vertical section



Angrenzende Bauteile sind hier nur schematisch dargestellt. Die konkrete Detailausbildung ist unter Beachtung von Normen, Vorschriften und Richtlinien objektbezogen separat zu planen.

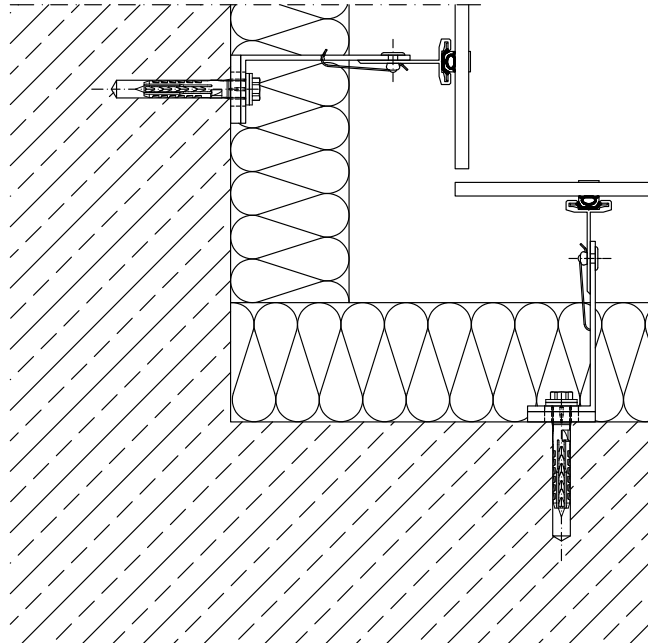
Adjacent components are shown here only schematically. The concrete details are to be planned separately in respect of the particular building involved. This must be done in accordance with the relevant standards, regulations and guidelines.

Schnitte

Sections

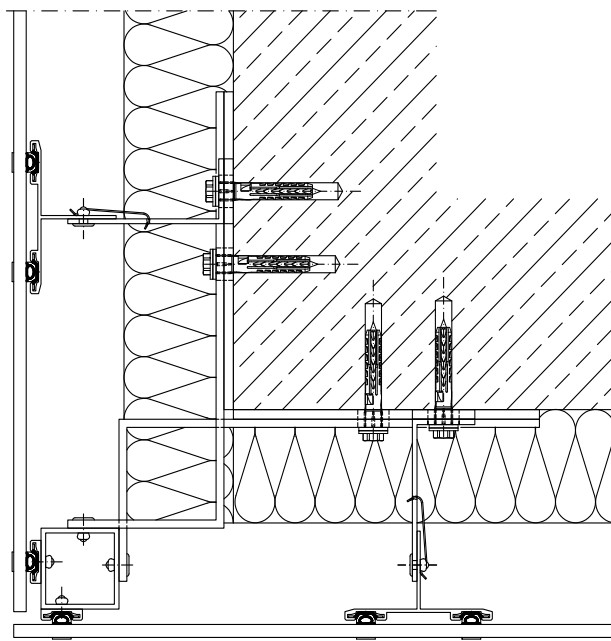
Schnitt 3 Innenecke

Section 3 Internal corner



Schnitt 4 Außenecke

Section 4 External corner



Angrenzende Bauteile sind hier nur schematisch dargestellt. Die konkrete Detailausbildung ist unter Beachtung von Normen, Vorschriften und Richtlinien objektbezogen separat zu planen.

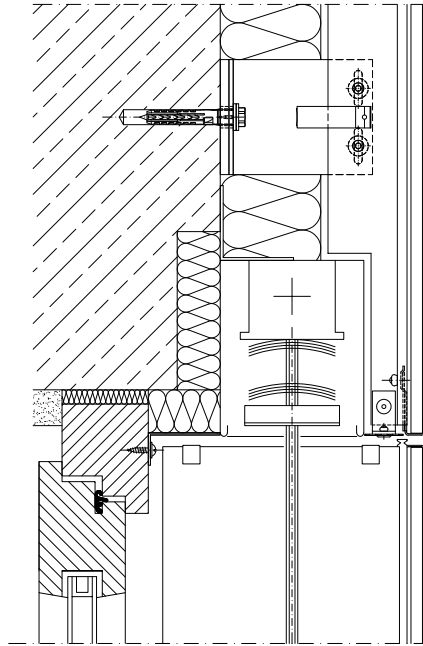
Adjacent components are shown here only schematically. The concrete details are to be planned separately in respect of the particular building involved. This must be done in accordance with the relevant standards, regulations and guidelines.

Schnitte

Sections

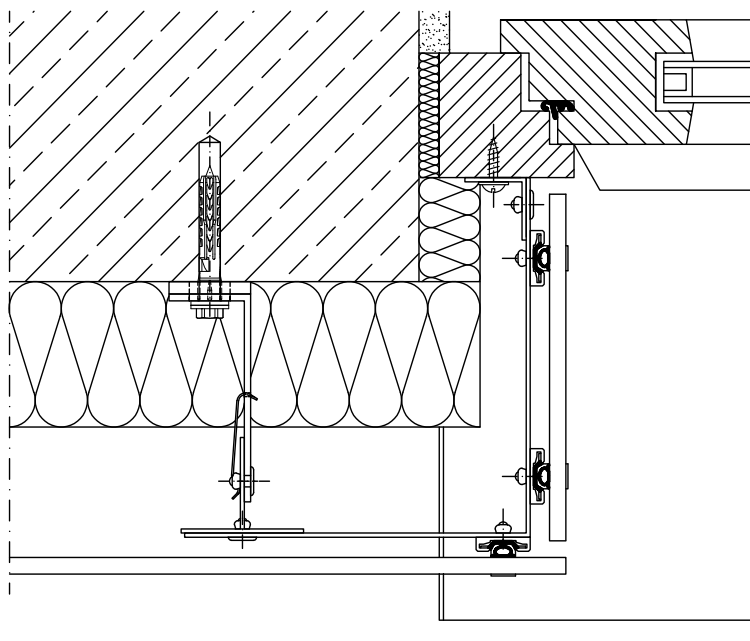
Schnitt 5 Jalousiekasten

Section 5 Roller-blind box



Schnitt 6a Fensterleibung

Section 6a Window embrasure

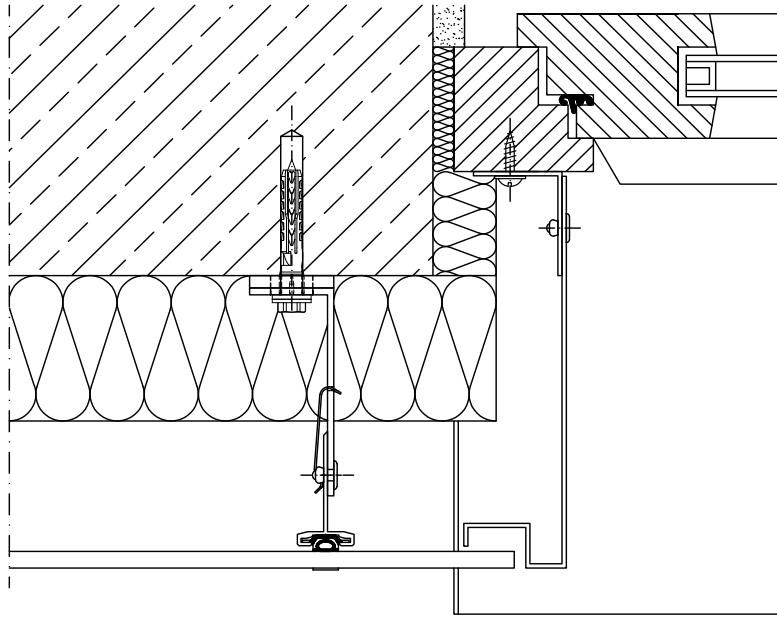


Angrenzende Bauteile sind hier nur schematisch dargestellt. Die konkrete Detailausbildung ist unter Beachtung von Normen, Vorschriften und Richtlinien objektbezogen separat zu planen.

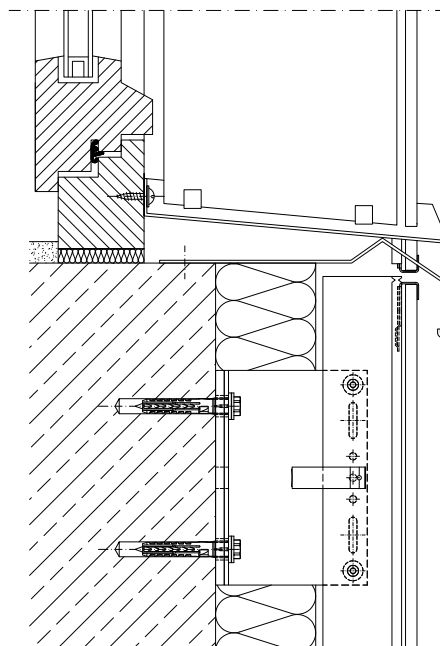
Adjacent components are shown here only schematically. The concrete details are to be planned separately in respect of the particular building involved. This must be done in accordance with the relevant standards, regulations and guidelines.

Schnitte Sections

Schnitt 6b Fensterleibung Section 6b Window embrasure



Schnitt 7 Fensterbank Section 7 Window sill



Angrenzende Bauteile sind hier nur schematisch dargestellt. Die konkrete Detailausbildung ist unter Beachtung von Normen, Vorschriften und Richtlinien objektbezogen separat zu planen.

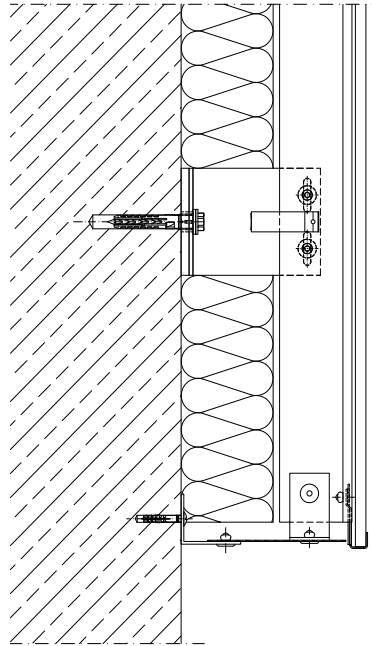
Adjacent components are shown here only schematically. The concrete details are to be planned separately in respect of the particular building involved. This must be done in accordance with the relevant standards, regulations and guidelines.

Schnitte

Sections

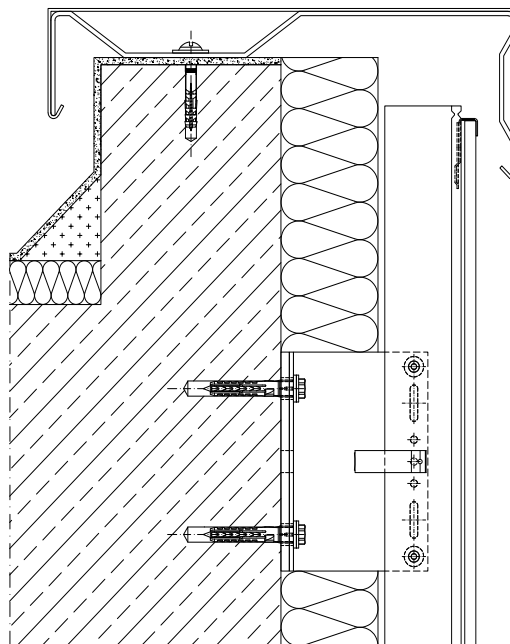
Schnitt 8 Sockelabschluss

Section 8 Lower edge



Schnitt 9 Attikaabschluss

Section 9 Attic connection



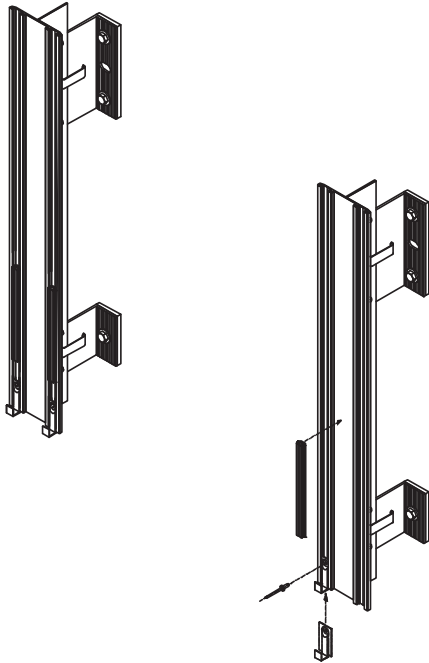
Angrenzende Bauteile sind hier nur schematisch dargestellt. Die konkrete Detailausbildung ist unter Beachtung von Normen, Vorschriften und Richtlinien objektbezogen separat zu planen.

Adjacent components are shown here only schematically. The concrete details are to be planned separately in respect of the particular building involved. This must be done in accordance with the relevant standards, regulations and guidelines.

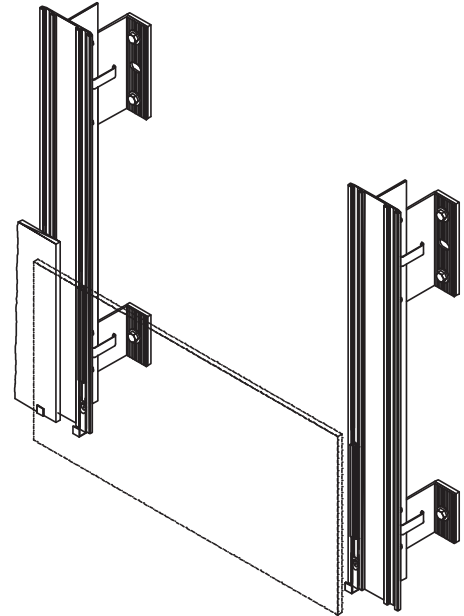
Montagefolge - sichtbare Befestigung

Mounting sequence - visible fixing

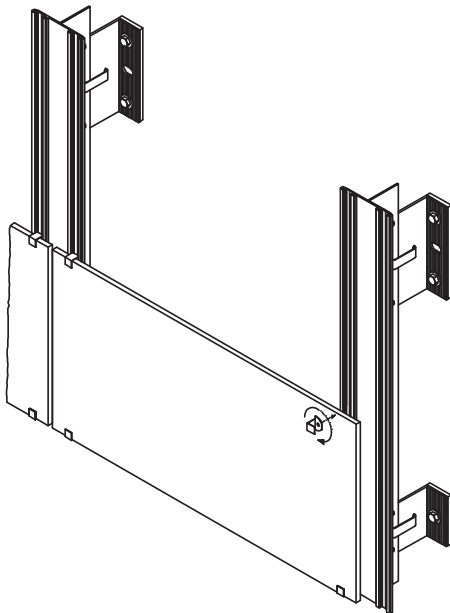
1



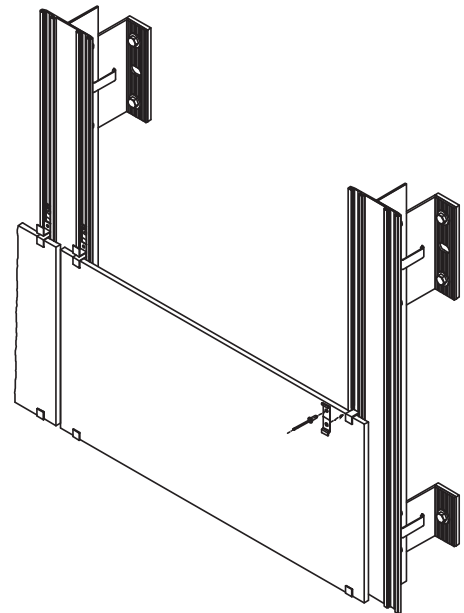
2



3



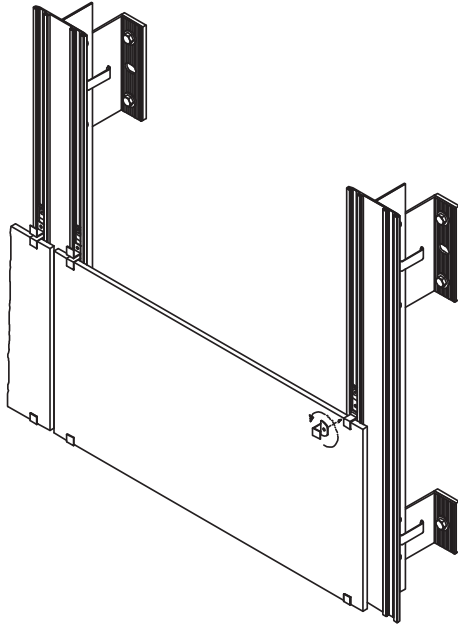
4



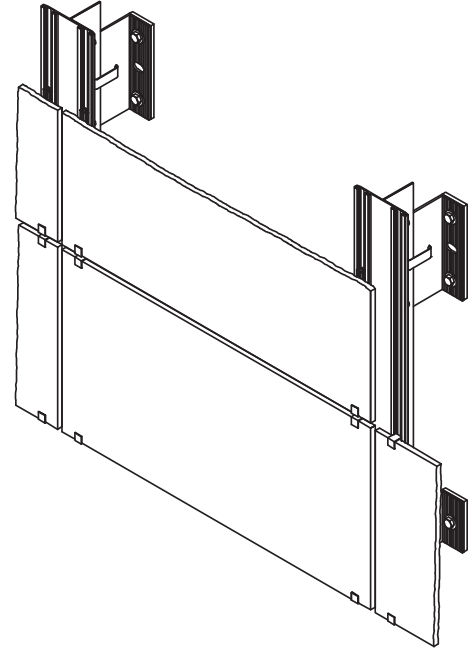
Montagefolge - sichtbare Befestigung

Mounting sequence - visible fixing

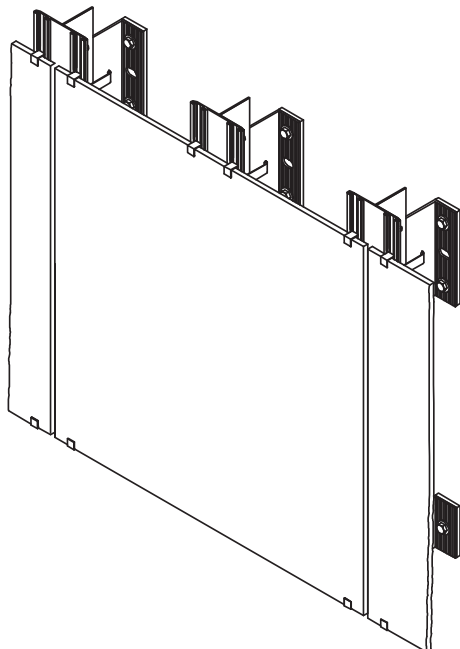
5



6



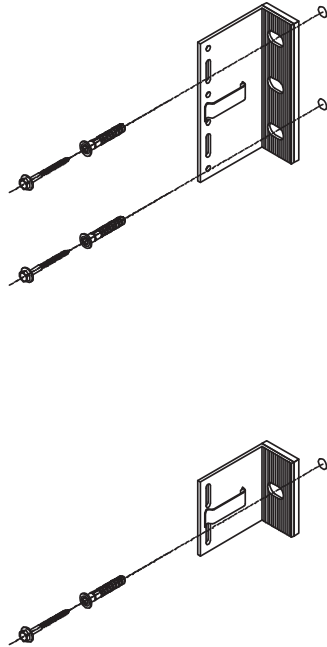
7



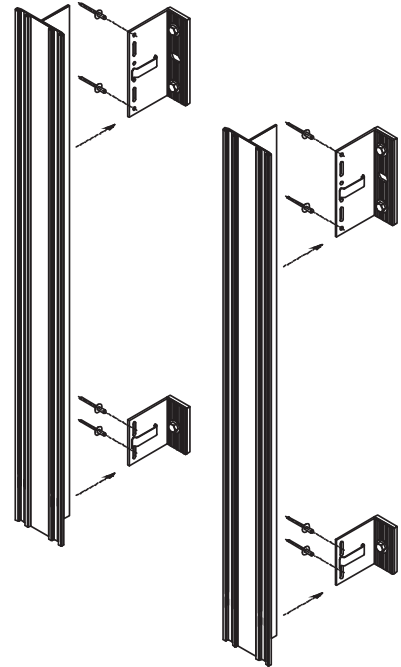
Montagefolge - verdeckte Befestigung

Mounting sequence - hidden fixing

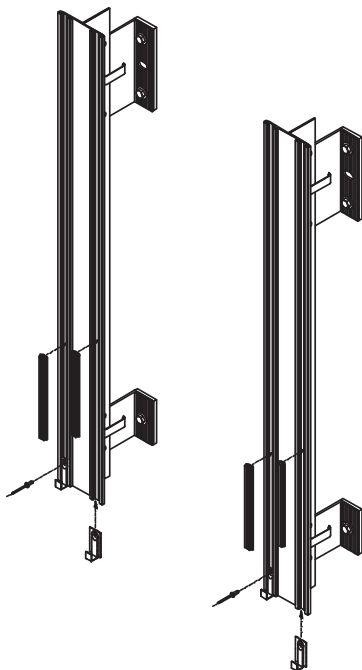
1



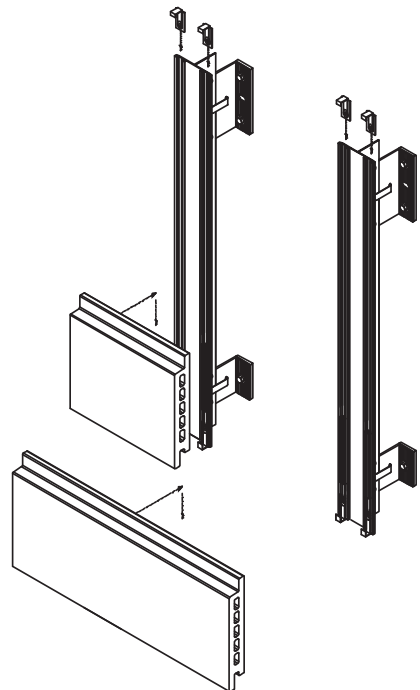
2



3



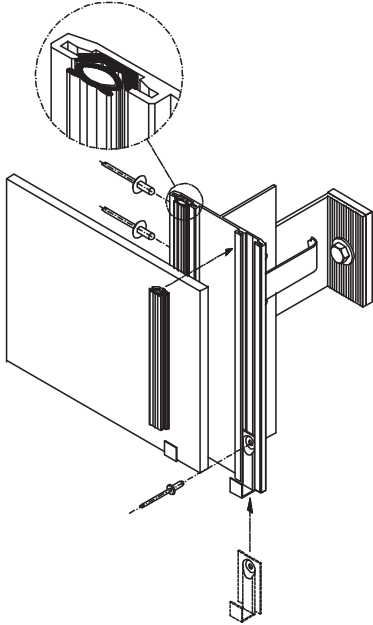
4



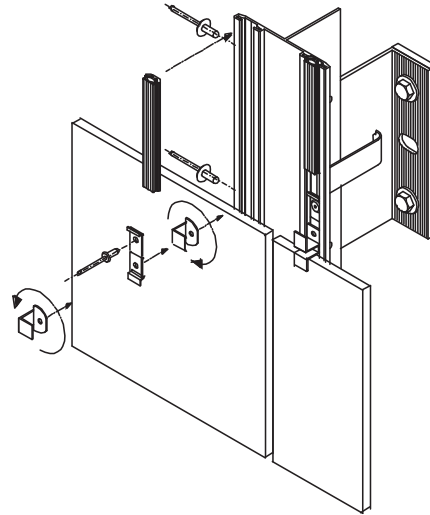
Montagedetails

Mounting details

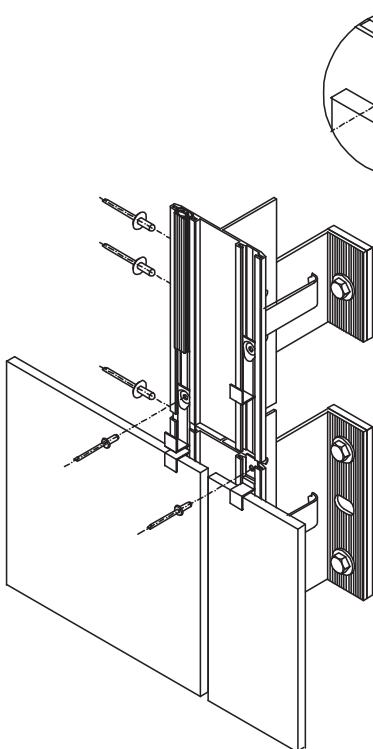
1



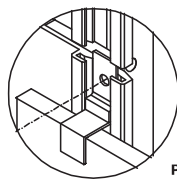
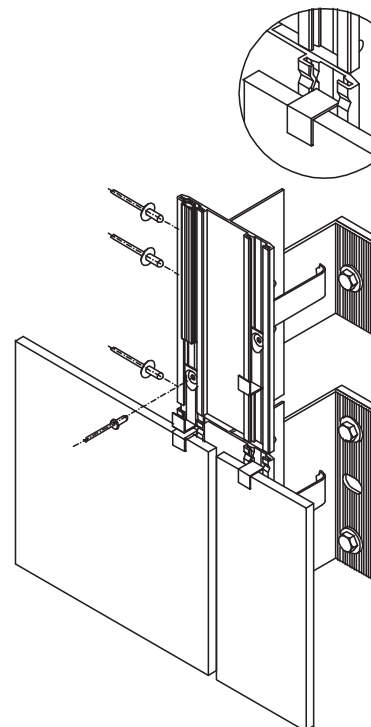
2



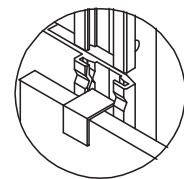
3



4



Profilstoß A
Section joint A

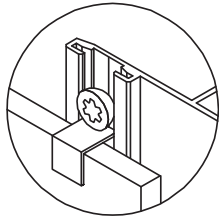


Profilstoß B
Section joint B

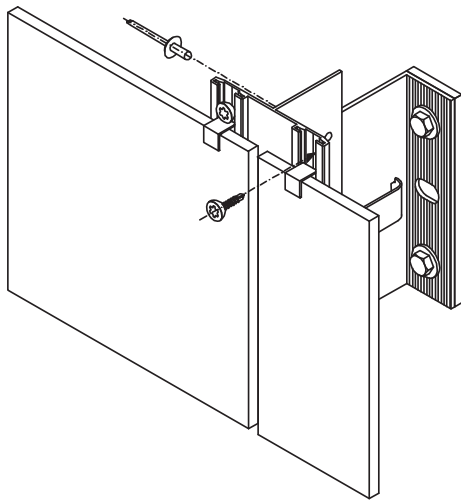
Montagedetails

Mounting details

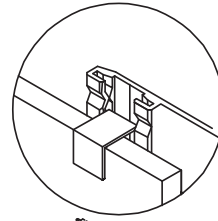
5



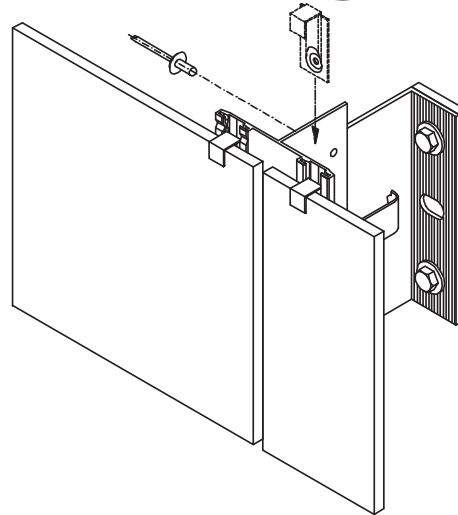
Oberer Abschluss A
Top end A



6



Oberer Abschluss B
Top end B

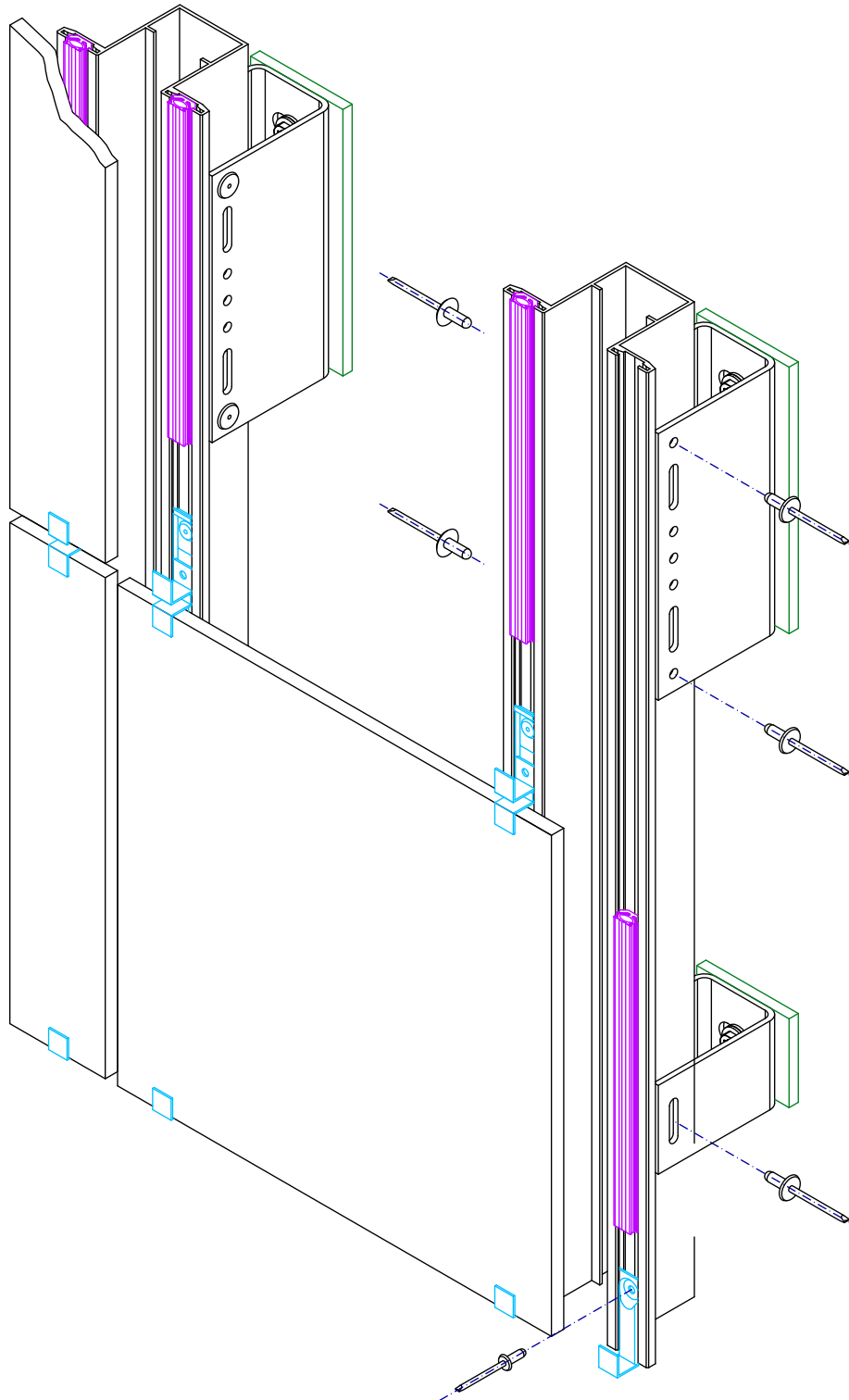


Konstruktionsbeispiel

Construction example

Keramik, variable Klammerbefestigung

Ceramic tiles, variable clamp fixing

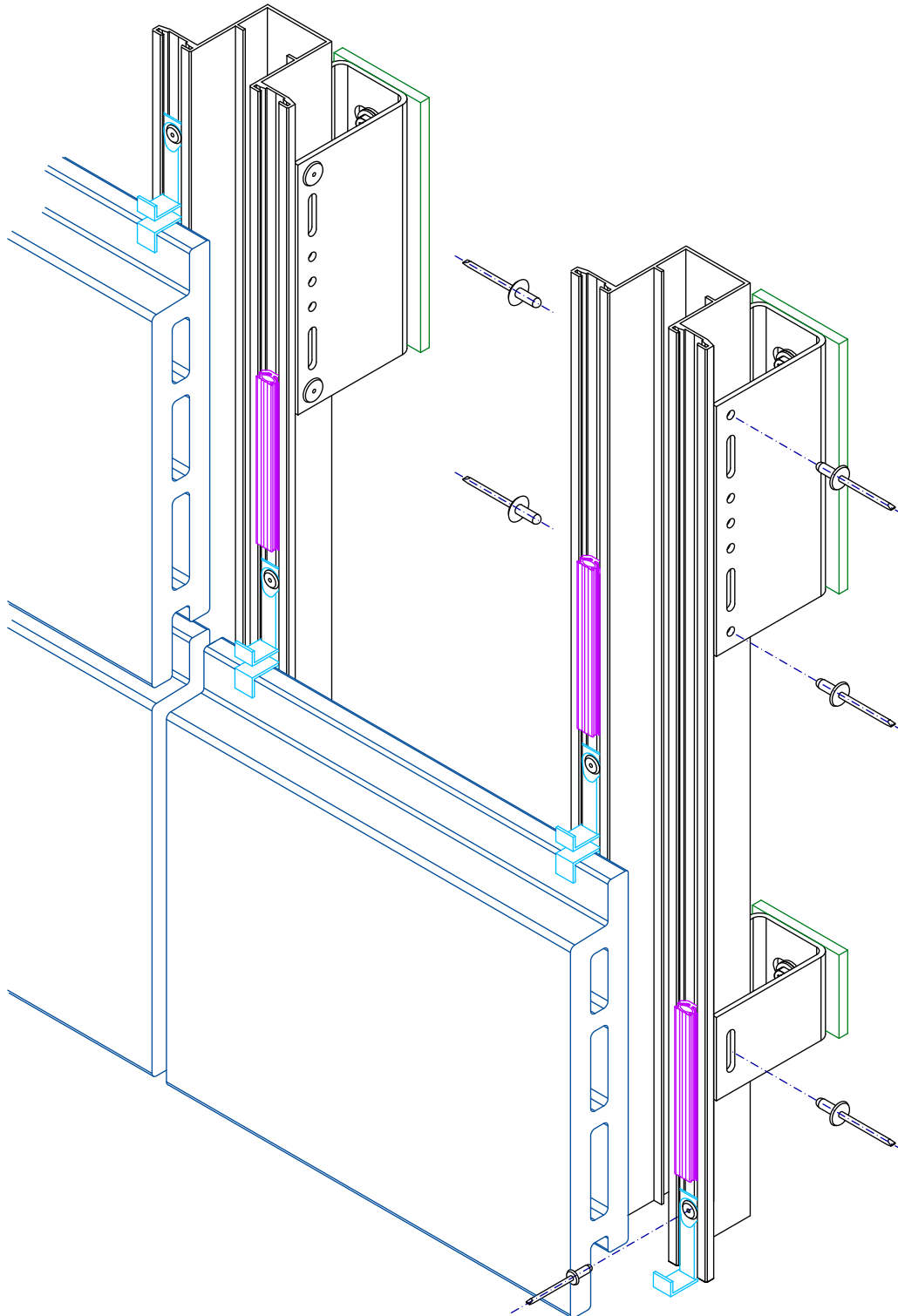


Konstruktionsbeispiel

Construction example

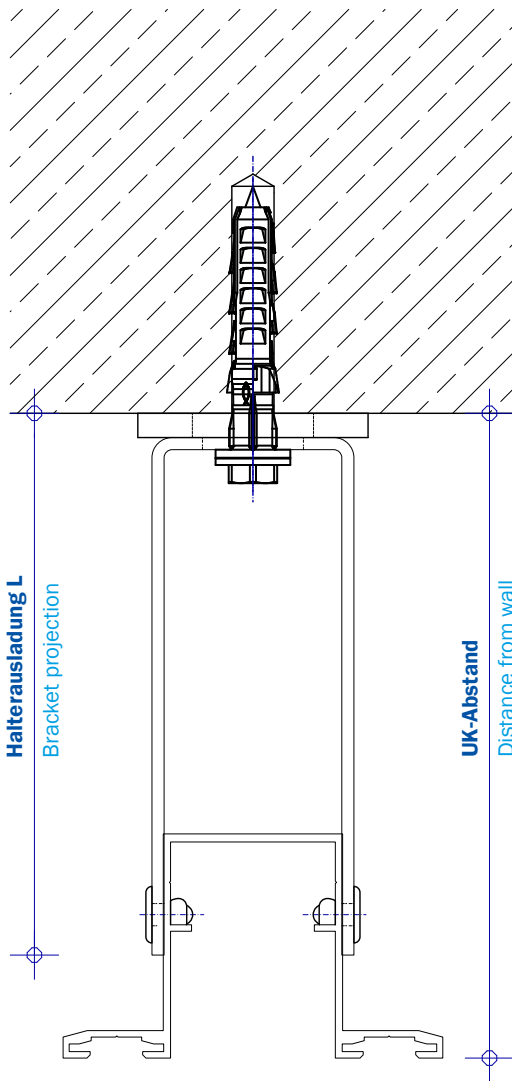
Profilierte Terrakotta/Keramik, verdeckte Klammerbefestigung

Profiled terracotta/ceramics, hidden clamp fixing



Wandabstände

Distance from the wall



Halterausladung L (mm) Bracket projection L (mm)	UK-Abstand (mm) Distance from the wall (mm)
60	67 + T bis / up to 95 + T
80	87 + T bis / up to 115 + T
100	107 + T bis / up to 135 + T
120	127 + T bis / up to 155+ T
140	147 + T bis / up to 175+ T
160	167 + T bis / up to 195 + T
180	187 + T bis / up to 215 + T
200	207 + T bis / up to 235 + T
220	227 + T bis / up to 255 + T
240	247 + T bis / up to 275 + T
260	267 + T bis / up to 295 + T
280	287 + T bis / up to 315 + T
300	307 + T bis / up to 335 + T
320	327 + T bis / up to 355 + T

Sonderlängen und Sonderhalter auf Anfrage
Special lengths and special brackets on demand

T = Dicke BWM-Thermostop, T = 6 mm
T = Thickness of the BWM-Thermal separating layer, T = 6 mm

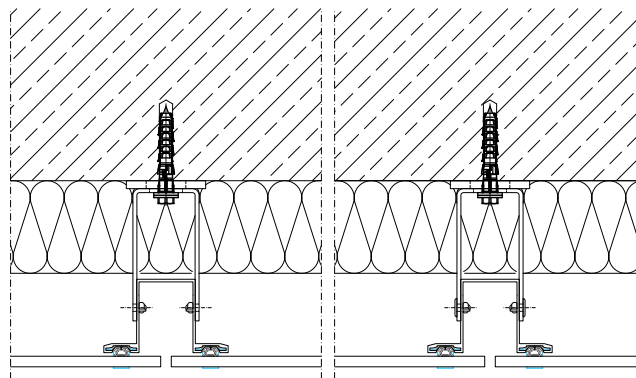
Bei geringen Wandabständen können die Kopfabmessungen des Verankerungselements maßgebend sein
In case of low distances from wall the head sizes of the anchoring elements can be relevant

Schnitte

Sections

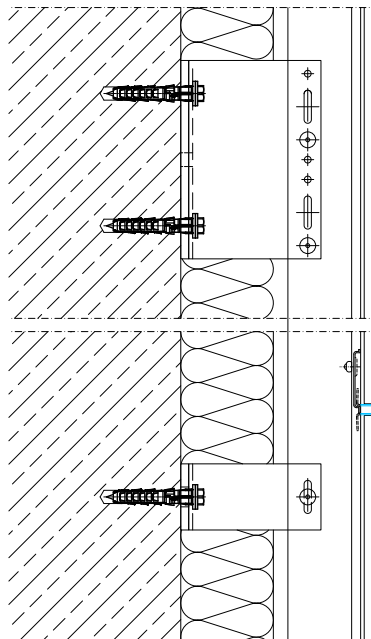
Schnitt 1 Horizontalschnitt

Section 1 Horizontal section



Schnitt 2 Vertikalschnitt

Section 2 Vertical section



Angrenzende Bauteile sind hier nur schematisch dargestellt. Die konkrete Detailausbildung ist unter Beachtung von Normen, Vorschriften und Richtlinien objektbezogen separat zu planen.

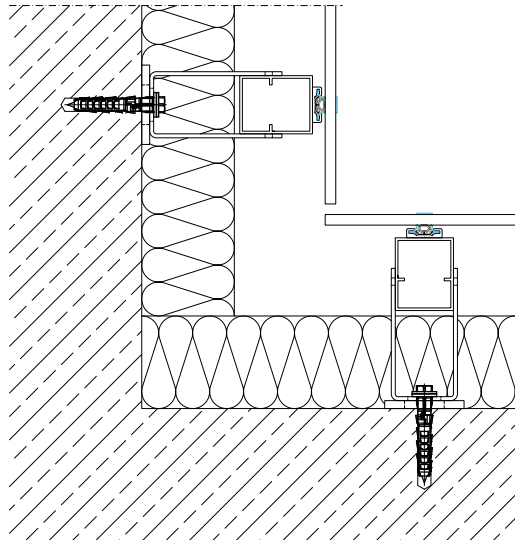
Adjacent components are shown here only schematically. The concrete details are to be planned separately in respect of the particular building involved. This must be done in accordance with the relevant standards, regulations and guidelines.

Schnitte

Sections

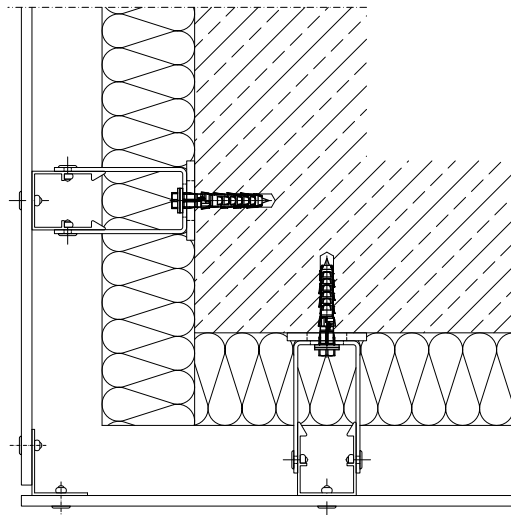
Schnitt 3 Innenecke

Section 3 Internal corner



Schnitt 4 Außenecke

Section 4 External corner



Angrenzende Bauteile sind hier nur schematisch dargestellt. Die konkrete Detailausbildung ist unter Beachtung von Normen, Vorschriften und Richtlinien objektbezogen separat zu planen.

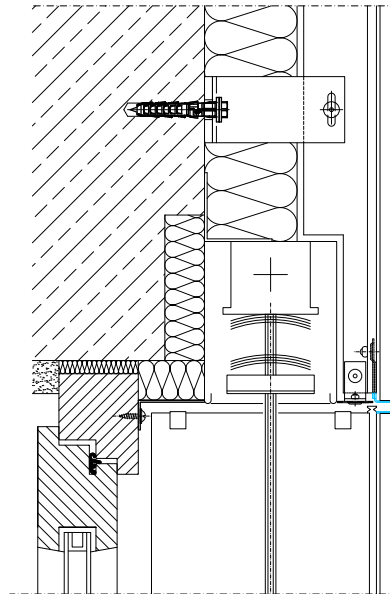
Adjacent components are shown here only schematically. The concrete details are to be planned separately in respect of the particular building involved. This must be done in accordance with the relevant standards, regulations and guidelines.

Schnitte

Sections

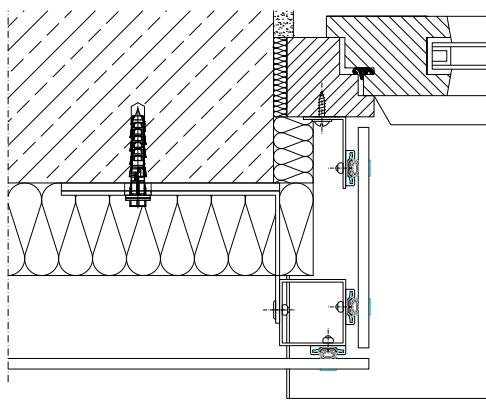
Schnitt 5 Jalousiekasten

Section 5 Roller-blind box



Schnitt 6 Fensterleibung

Section 6 Window embrasure



Angrenzende Bauteile sind hier nur schematisch dargestellt. Die konkrete Detailausbildung ist unter Beachtung von Normen, Vorschriften und Richtlinien objektbezogen separat zu planen.

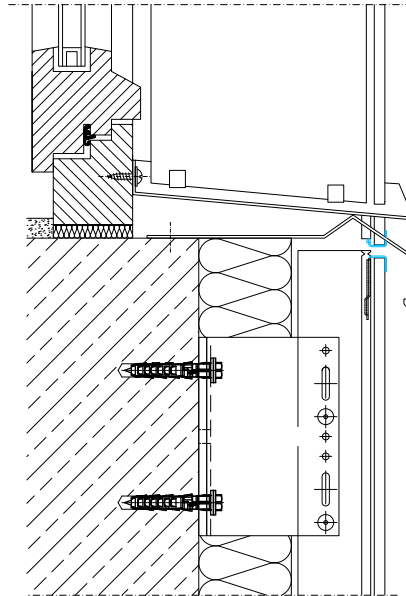
Adjacent components are shown here only schematically. The concrete details are to be planned separately in respect of the particular building involved. This must be done in accordance with the relevant standards, regulations and guidelines.

Schnitte

Sections

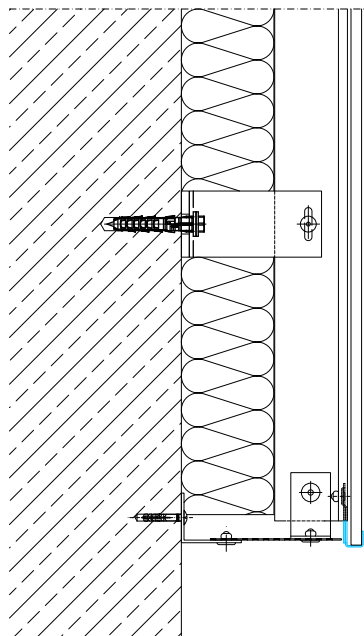
Schnitt 7 Fensterbank

Section 7 Window sill



Schnitt 8 Sockelabschluss

Section 8 Lower edge



Angrenzende Bauteile sind hier nur schematisch dargestellt. Die konkrete Detailausbildung ist unter Beachtung von Normen, Vorschriften und Richtlinien objektbezogen separat zu planen.

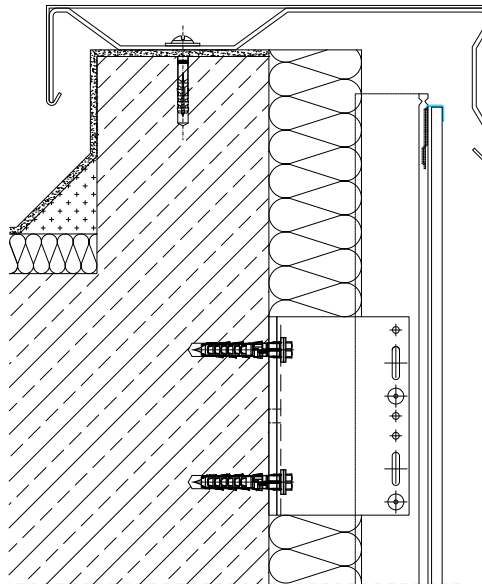
Adjacent components are shown here only schematically. The concrete details are to be planned separately in respect of the particular building involved. This must be done in accordance with the relevant standards, regulations and guidelines.

Schnitte

Sections

Schnitt 9 Attikaabschluss

Section 9 Attic connection



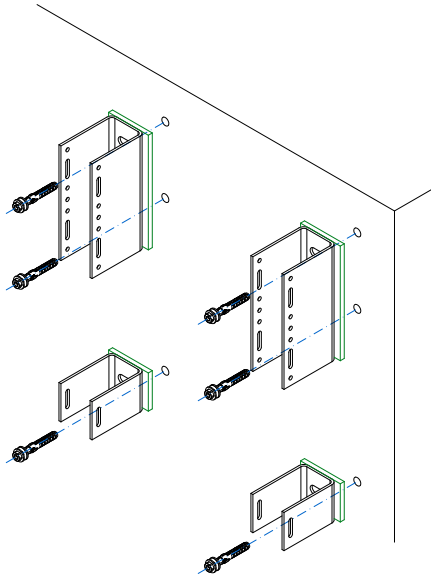
Angrenzende Bauteile sind hier nur schematisch dargestellt. Die konkrete Detailausbildung ist unter Beachtung von Normen, Vorschriften und Richtlinien objektbezogen separat zu planen.

Adjacent components are shown here only schematically. The concrete details are to be planned separately in respect of the particular building involved. This must be done in accordance with the relevant standards, regulations and guidelines.

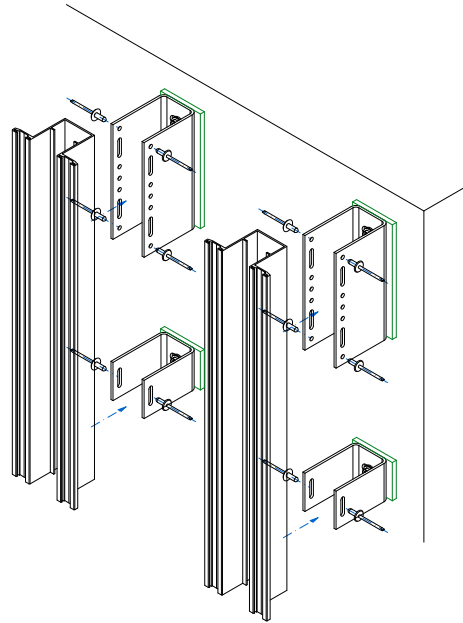
Montagefolge - verdeckte Befestigung

Mounting sequence - hidden fixing

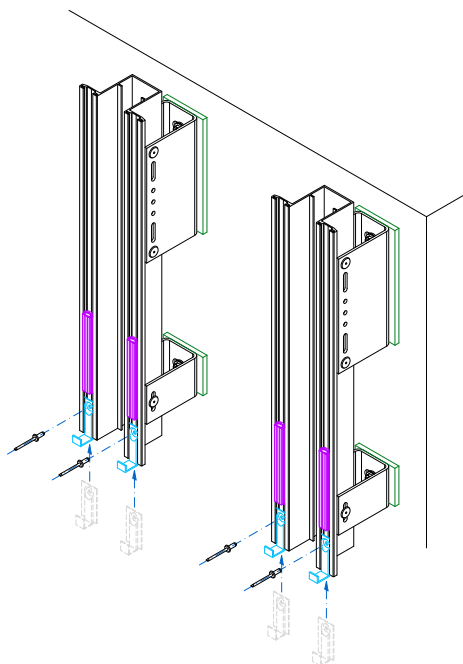
1



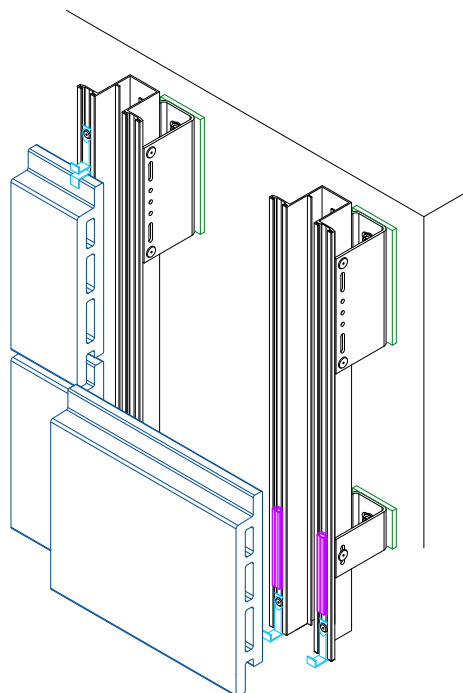
2



3



4

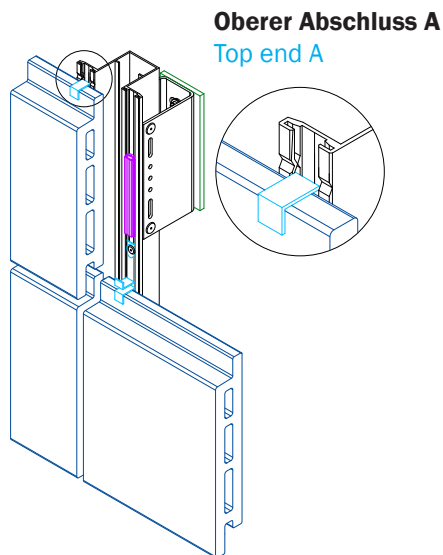


Klammern vor Profilmontage einsetzen!
Clamps to be inserted before setting up the sections!

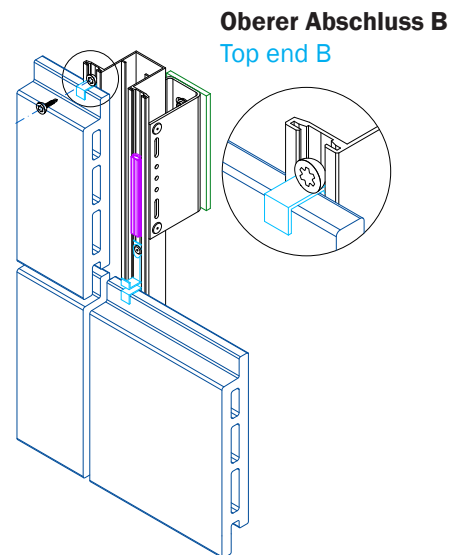
Montagefolge - verdeckte Befestigung

Mounting sequence - hidden fixing

5.1



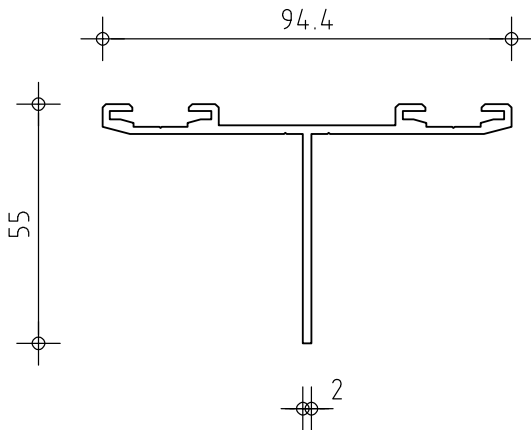
5.2



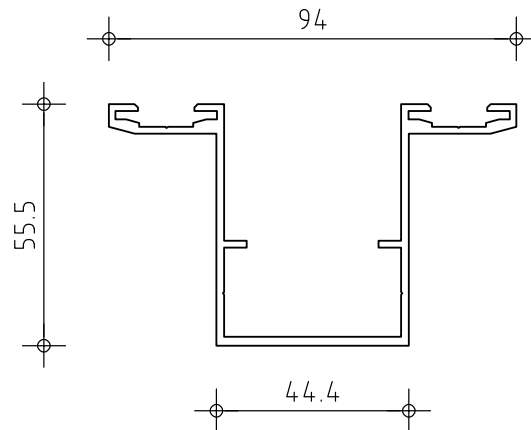
Tragprofile

Support sections

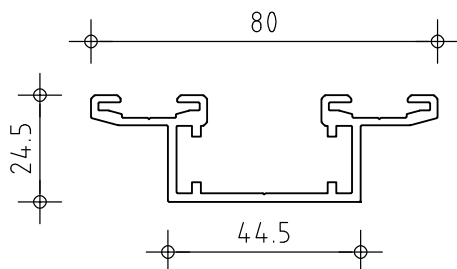
Hauptprofil Minor
Main section Minor
Art. 66788



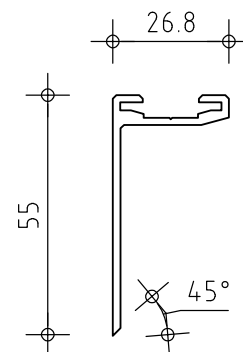
***Hauptprofil 50**
*Main section 50
Art. 66786



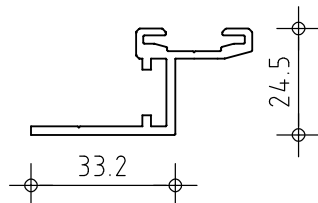
Profil ATK 102 GA-1
Support section ATK 102 GA-1
Art. 66793



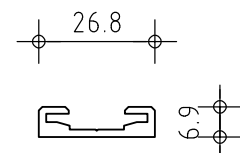
***Eckprofil**
*Edge section
Art. 68394



Abschlußprofil ATK 102 GA-2
Bottom section ATK 102 GA-2
Art. 66794



Leibungsprofil
Embrasure section
Art. 66787



*** Profile mit 0,5 mm vergrößertem Klammerkanal : auf Anfrage**

* support sections whereby channel for clamps 0,5 mm expanded: on demand

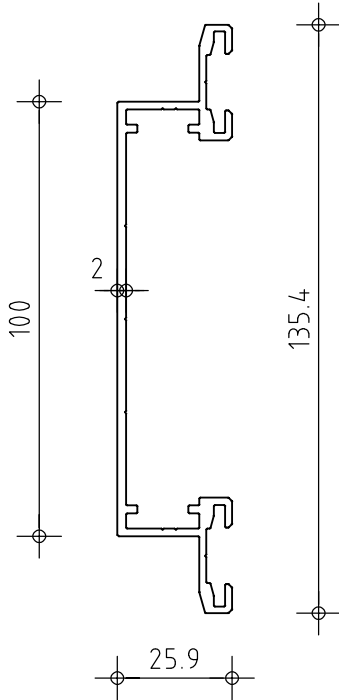
Eloxal schwarz auf Anfrage
Black anodization on demand

Wandhalter und Zubehör siehe ATK 100 Minor / ATK 100 ZeLa / ATK 101
Wall brackets and accesories see ATK 100 Minor / ATK 100 ZeLa / ATK 101

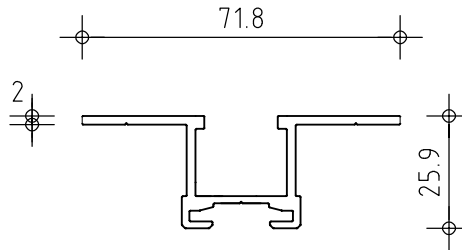
Tragprofile

Support sections

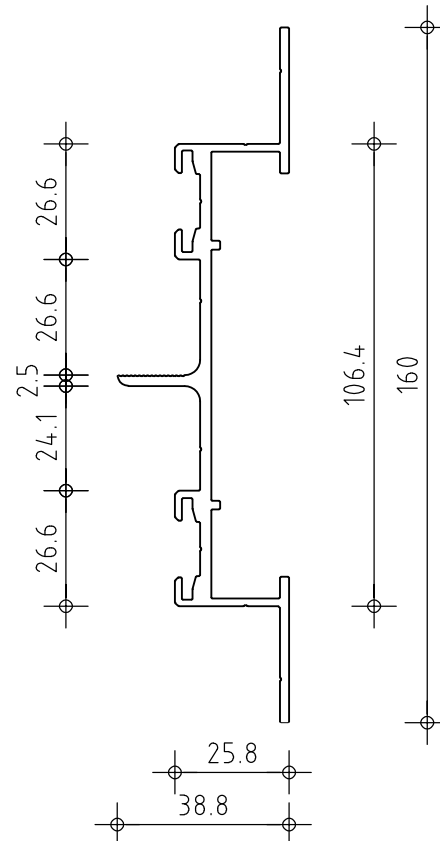
***Profil ATK 102 GA-3**
*Support section ATK 102 GA-3
Art. 66710



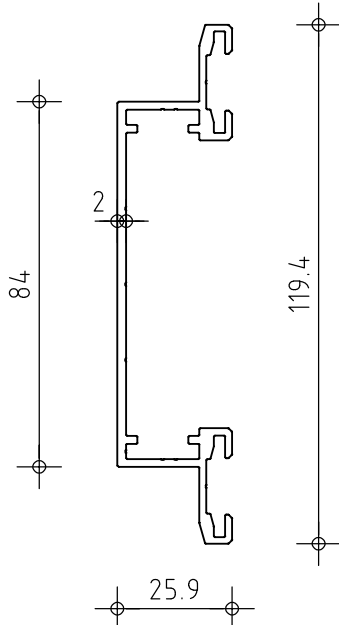
***Profil ATK 102 GA-4**
*Support section ATK 102 GA-4
Art. 66711



***Profil ATK 102 GA-6**
*Support section ATK 102 GA-6
Art. 66713



***Profil ATK 102 GA-5**
*Support section ATK 102 GA-5
Art. 66712



***Klammerkanal 0,5 mm vergrößert**
*Channel for clamps 0,5 mm expanded

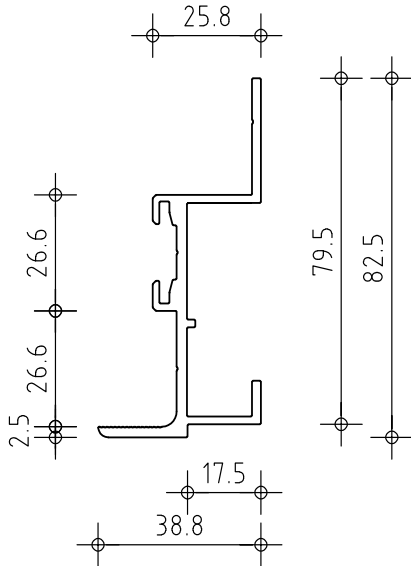
Eloxal schwarz auf Anfrage
Black anodization on demand

Wandhalter und Zubehör siehe ATK 100 Minor / ATK 100 ZeLa / ATK 101
Wall brackets and accesories see ATK 100 Minor / ATK 100 ZeLa / ATK 101

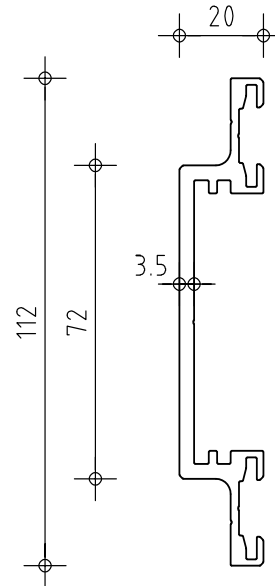
Tragprofile

Support sections

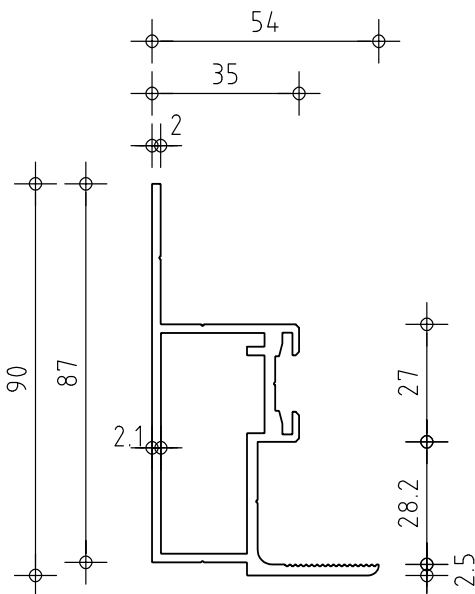
***Profil ATK 102 GA-7**
*Support section 102 GA-7
Art. 66714



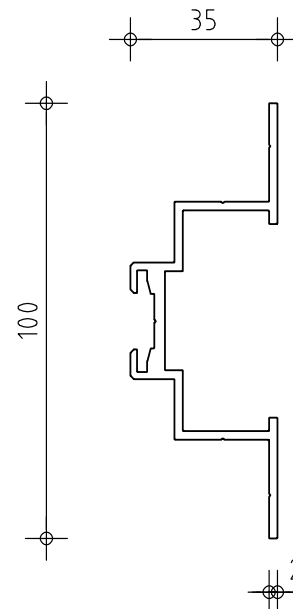
***Profil ATK 102 GA-9**
*Support section 102 GA-9
Art. 66717



***Profil ATK 102 GA-11**
*Support section 102 GA-11
Art. 66719



***Profil ATK 102 GA-12**
*Support section 102 GA-12
Art. 66720



***Klammerkanal 0,5 mm vergrößert**
*Channel for clamps 0,5 mm expanded

Eloxal schwarz auf Anfrage
Black anodization on demand

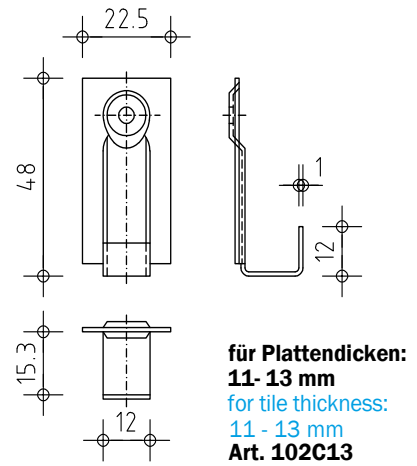
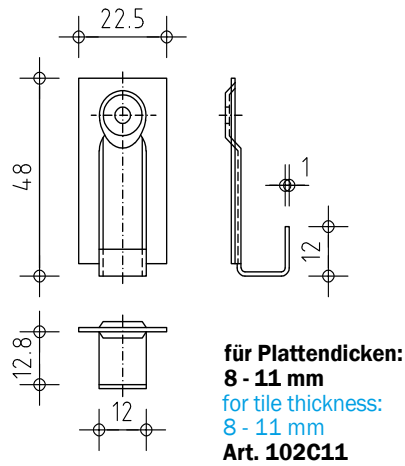
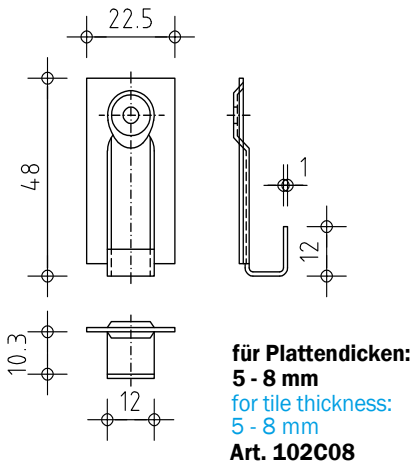
Wandhalter und Zubehör siehe ATK 100 Minor / ATK 100 ZeLa / ATK 101
Wall brackets and accesories see ATK 100 Minor / ATK 100 ZeLa / ATK 101

Klammern

Clamps

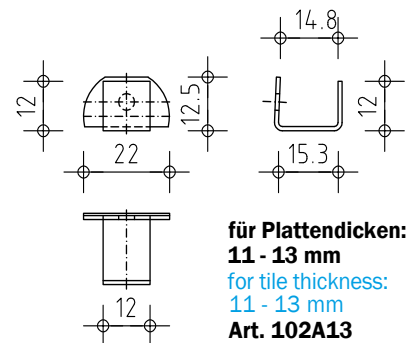
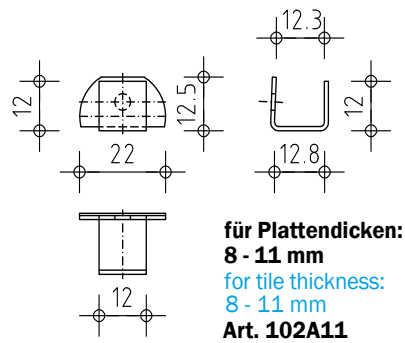
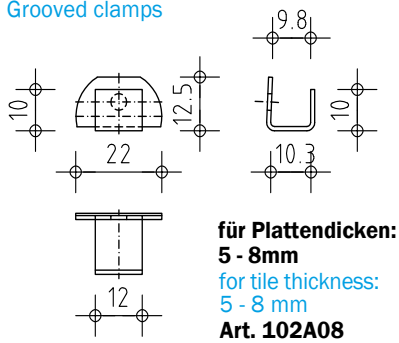
Anfangsklammern

Initial clamps



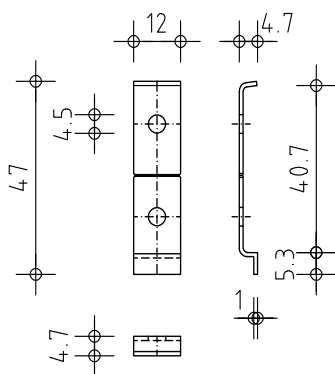
Fugenklammern

Grooved clamps



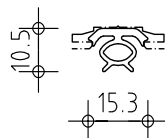
Distanzhalter für 8 (4) mm Fuge

Spacer for 8 (4) mm joint
Art. 102B11



EPDM-Profil

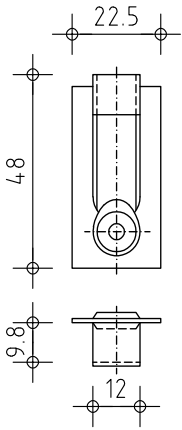
EPDM-section
Art. 1156



Klammern

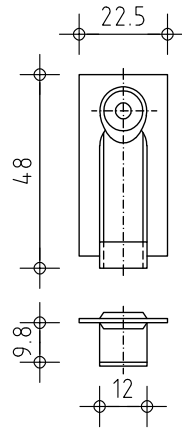
Clamps

Klammer oben
Top clamp



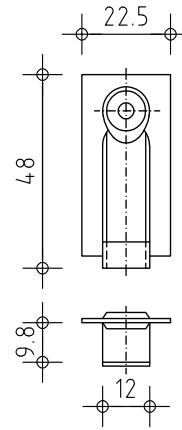
für Plattendicken:
5 - 8 mm
for tile thickness:
5 - 8 mm
Art. B02C08

Klammer unten
Bottom clamp



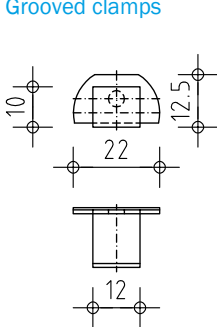
für Plattendicken:
5 - 8 mm
for tile thickness:
5 - 8 mm
Art. 102Z08

Klammer unten
Bottom clamp

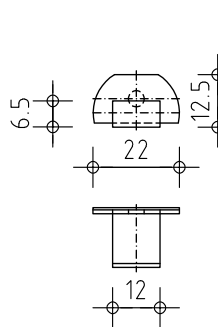


für Plattendicken:
5 - 8 mm
for tile thickness:
5 - 8 mm
Art. 102ZG8

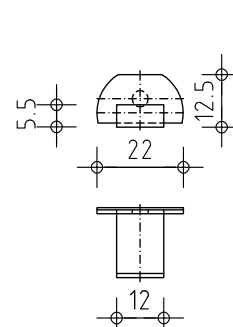
Fugenklammern
Grooved clamps



für Plattendicken:
5 - 8mm
for tile thickness:
5 - 8 mm
Art. 102A08

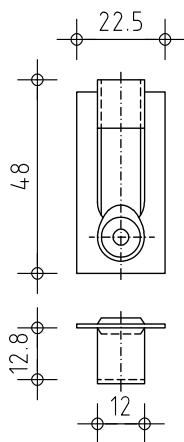


für Plattendicken:
5 - 8mm
for tile thickness:
5 - 8 mm
Art. 102AK8



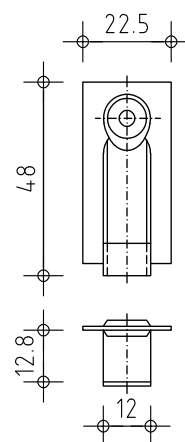
für Plattendicken:
5 - 8mm
for tile thickness:
5 - 8 mm
Art. 102AG8

Klammer oben
Top clamp



für Plattendicken:
8 - 11 mm
for tile thickness:
8 - 11 mm
Art. M02C11

Klammer unten
Bottom clamp

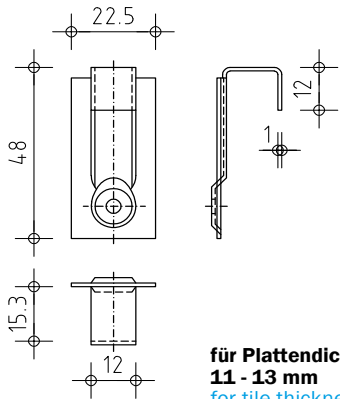


für Plattendicken:
8 - 11 mm
for tile thickness:
5 - 11 mm
Art. 102Z11

Klammern

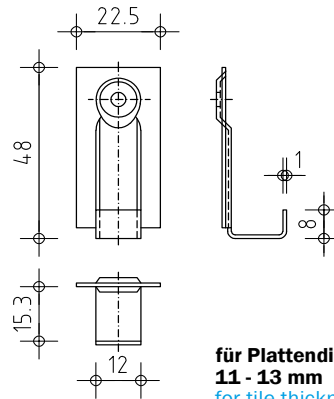
Clamps

Klammer oben
Top clamp



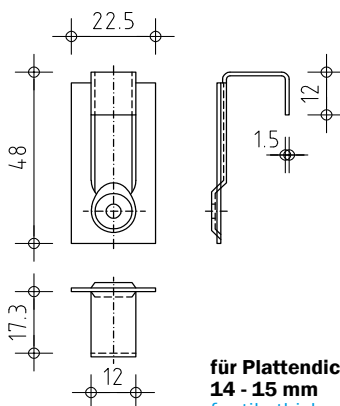
für Plattendicken:
11 - 13 mm
for tile thickness:
11 - 13 mm
Art. B02C13

Klammer unten
Bottom clamp



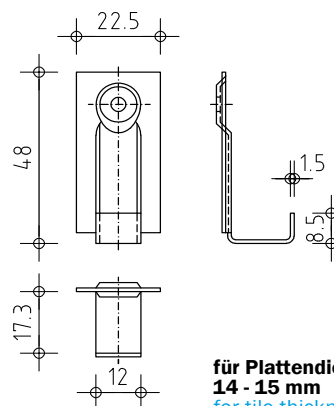
für Plattendicken:
11 - 13 mm
for tile thickness:
11 - 13 mm
Art. 102Z13

Klammer oben
Top clamp



für Plattendicken:
14 - 15 mm
for tile thickness:
14 - 15 mm
Art. 102Y15

Klammer unten
Bottom clamp



für Plattendicken:
14 - 15 mm
for tile thickness:
14 - 15 mm
Art. 102K15

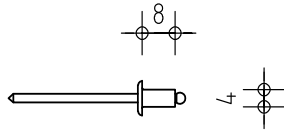
Zubehörteile

Accessories

Niet 4x8 Alu-Niro

Rivet 4x8 aluminium-stainless steel

Art. 320449

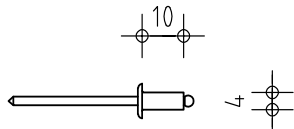


z.B. für Distanzhalter und Anfangsklammer
e.g. for spacers and initial clamps

Niet 4x10 Alu-Niro

Rivet 4x10 aluminium-stainless steel

Art. 320457

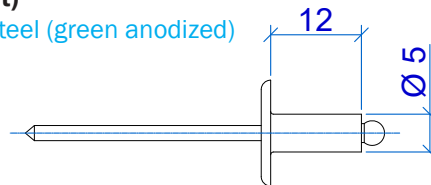


z.B. für Eckausbildung mit Leibungsprofil
e.g. for outer edges when using additional embrasure profiles
Art. 66787

BWM-Spezialniet SNA 5x12 K 14 Alu-Niro (grün eloxiert)

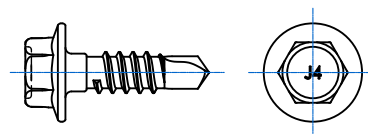
BWM-Special rivet SNA 5x12 K 14 aluminium-stainless steel (green anodized)

Art. 51214



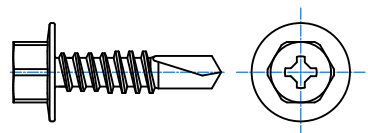
Bohrschraube JT4-3H/5-5,5x19

Drilling screw JT4-3H/5-5,5x19



Bohrschraube SDA 5/3,5-8-H13-S4-5,5x22

Drilling screw SDA 5/3,5-8-H13-S4-5,5x22



Weitere Verbindungsmittel auf Anfrage
Further connecting device on demand

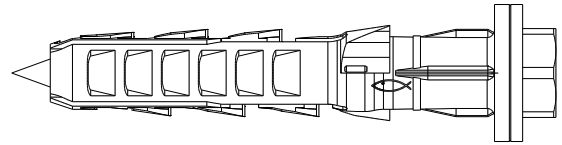
Wandhalter und Zubehör siehe ATK 100 Minor / ATK 100 ZeLa / ATK 101

Wall brackets and accesories see ATK 100 Minor / ATK 100 ZeLa / ATK 101

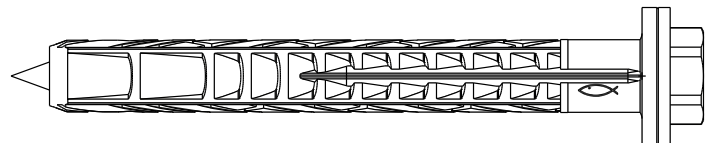
Zubehörteile

Accessories

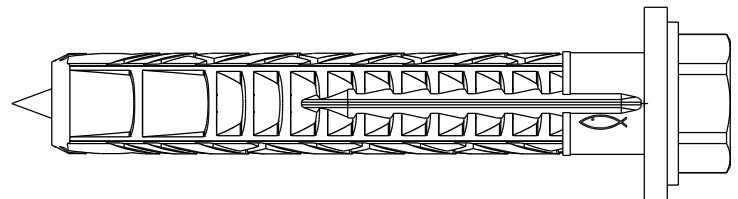
fischer Langschaftdübel SXR 10 x L FUS
fischer frame fixing SXR 10 x L FUS



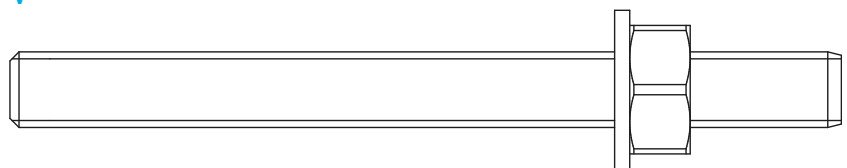
fischer Langschaftdübel SXRL 10 x L FUS
fischer frame fixing SXRL 10 x L FUS



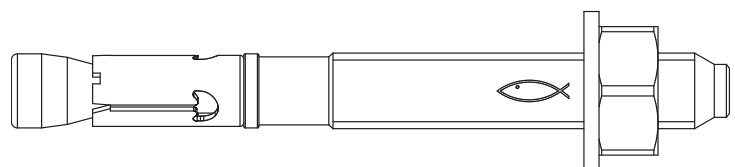
fischer Langschaftdübel SXRL 14 x L FUS
fischer frame fixing SXRL 14 x L FUS



fischer Injektionssysteme FIS V
fischer injection systems FIS V



fischer Bolzenanker FAZ II / R
fischer bolt anchors FAZ II / R



Weitere Verankerungsmittel (auch Verankerung in Stahl/Holz/etc.): auf Anfrage
Further anchoring elements (also anchoring in steel/wood/etc.): on demand