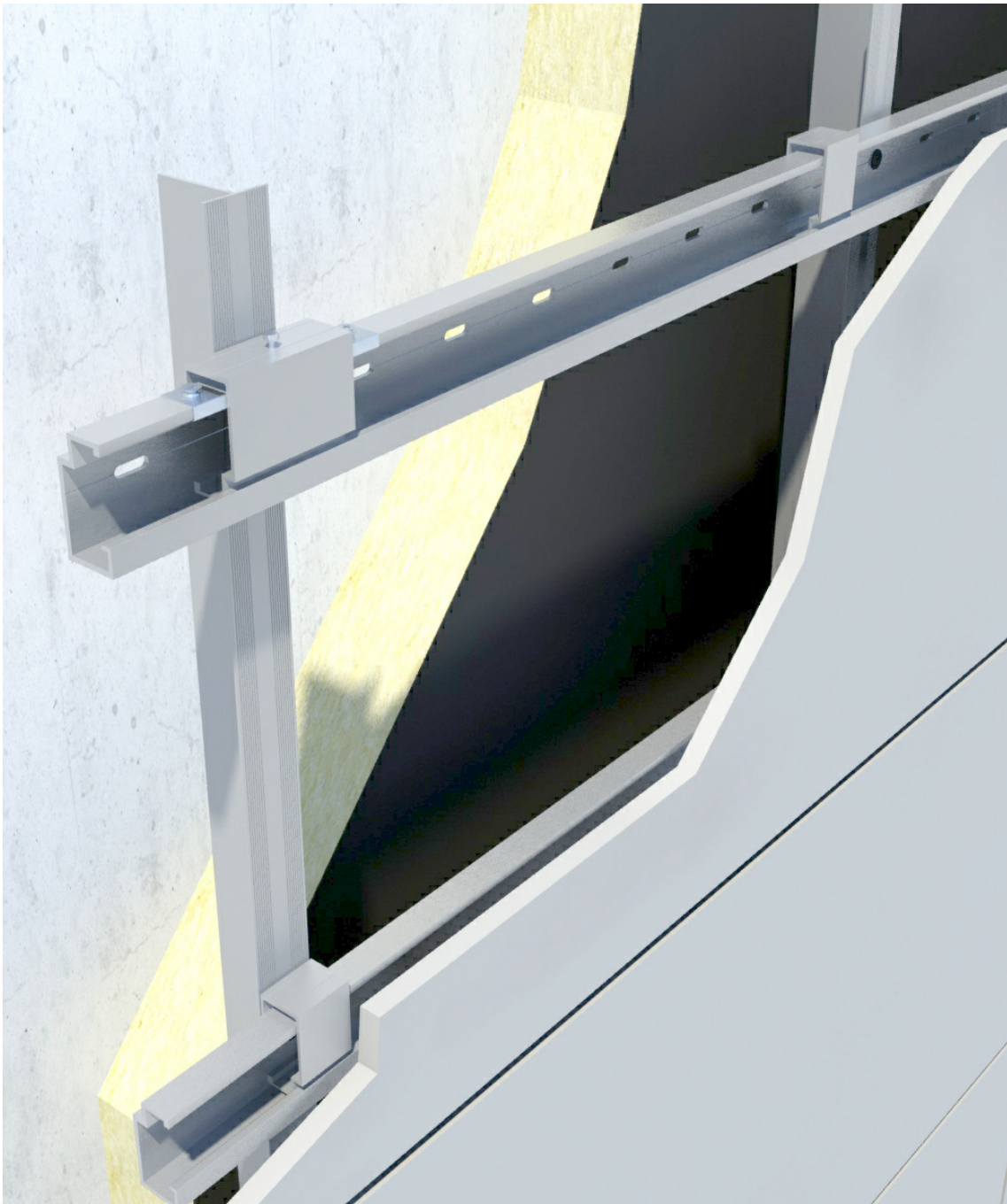


ATK 103

Technische Informationen

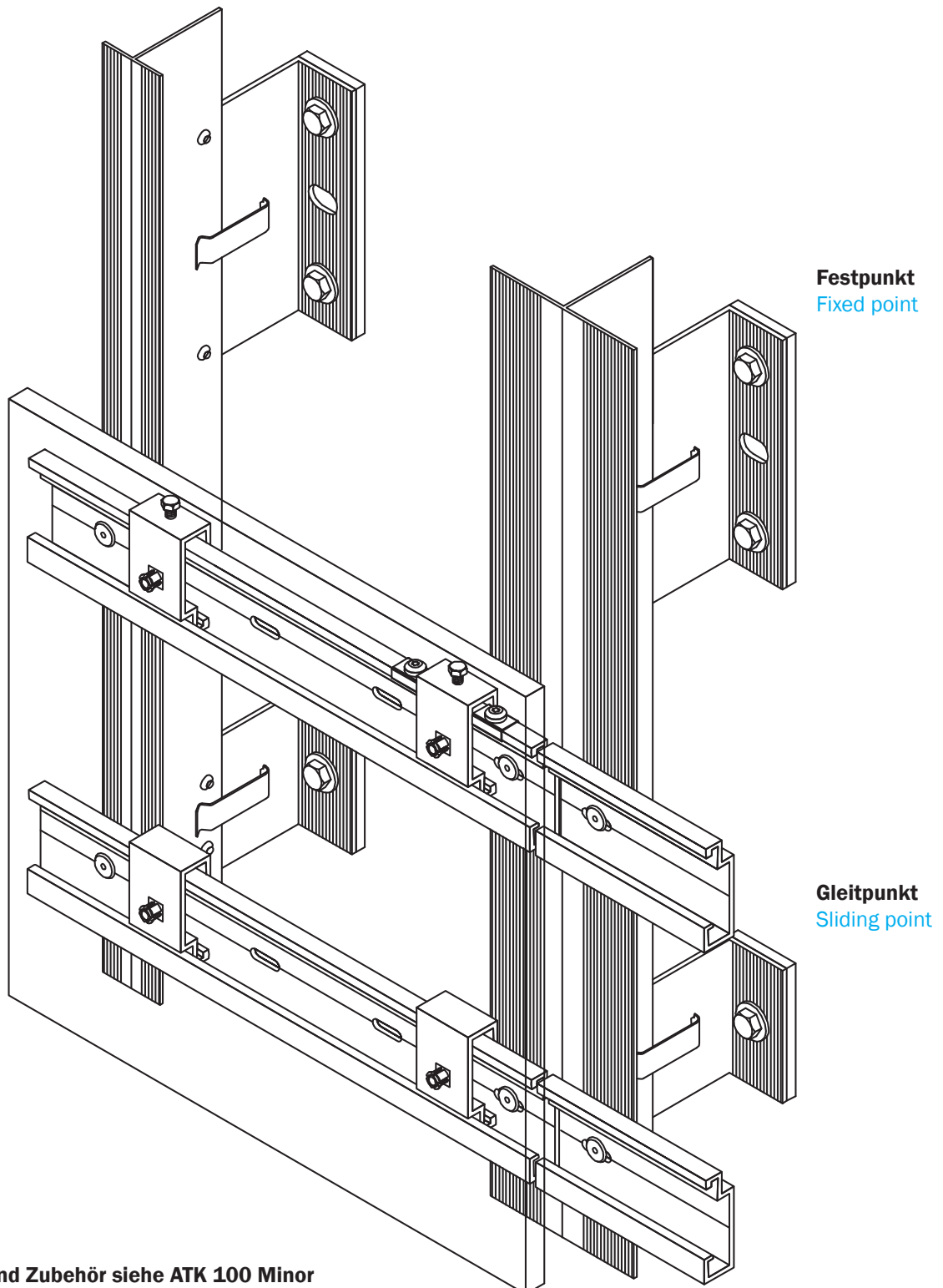
ATK 103
Technical Information



Konstruktionsbeispiel ATK 103 P20 + ATK 100 Minor

Construction example ATK 103 P20 + ATK 100 Minor

Faserzement, verdeckte Agraffenbefestigung
Fibre cement, hidden clasp fixing

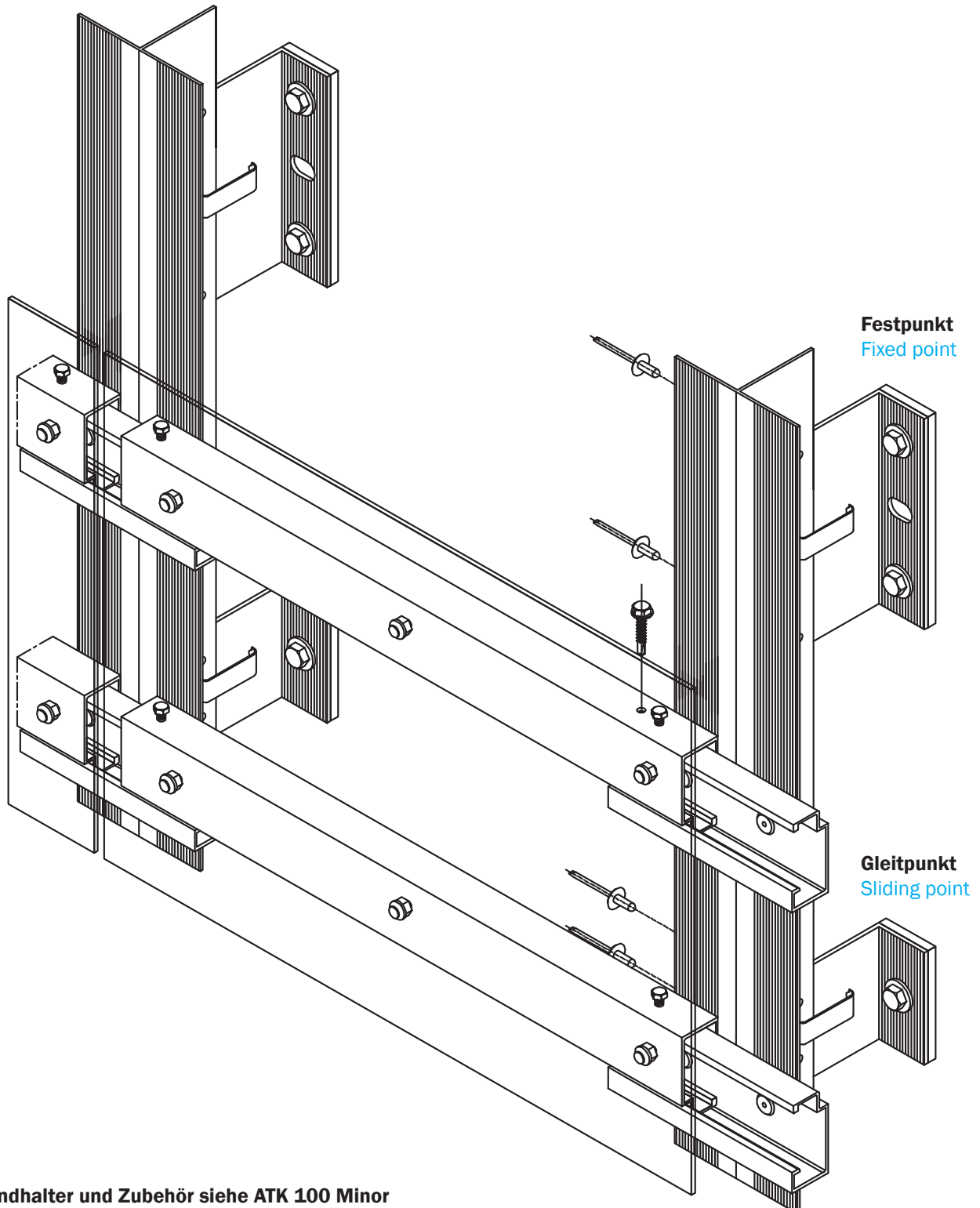


Wandhalter und Zubehör siehe ATK 100 Minor
Wall brackets and accessories see ATK 100 Minor

Konstruktionsbeispiel ATK 103 S + ATK 100 Minor

Construction example ATK 103 S + ATK 100 Minor

Glattblech, verdeckte Agraffenbefestigung
Plane metal panels, hidden clasp fixing

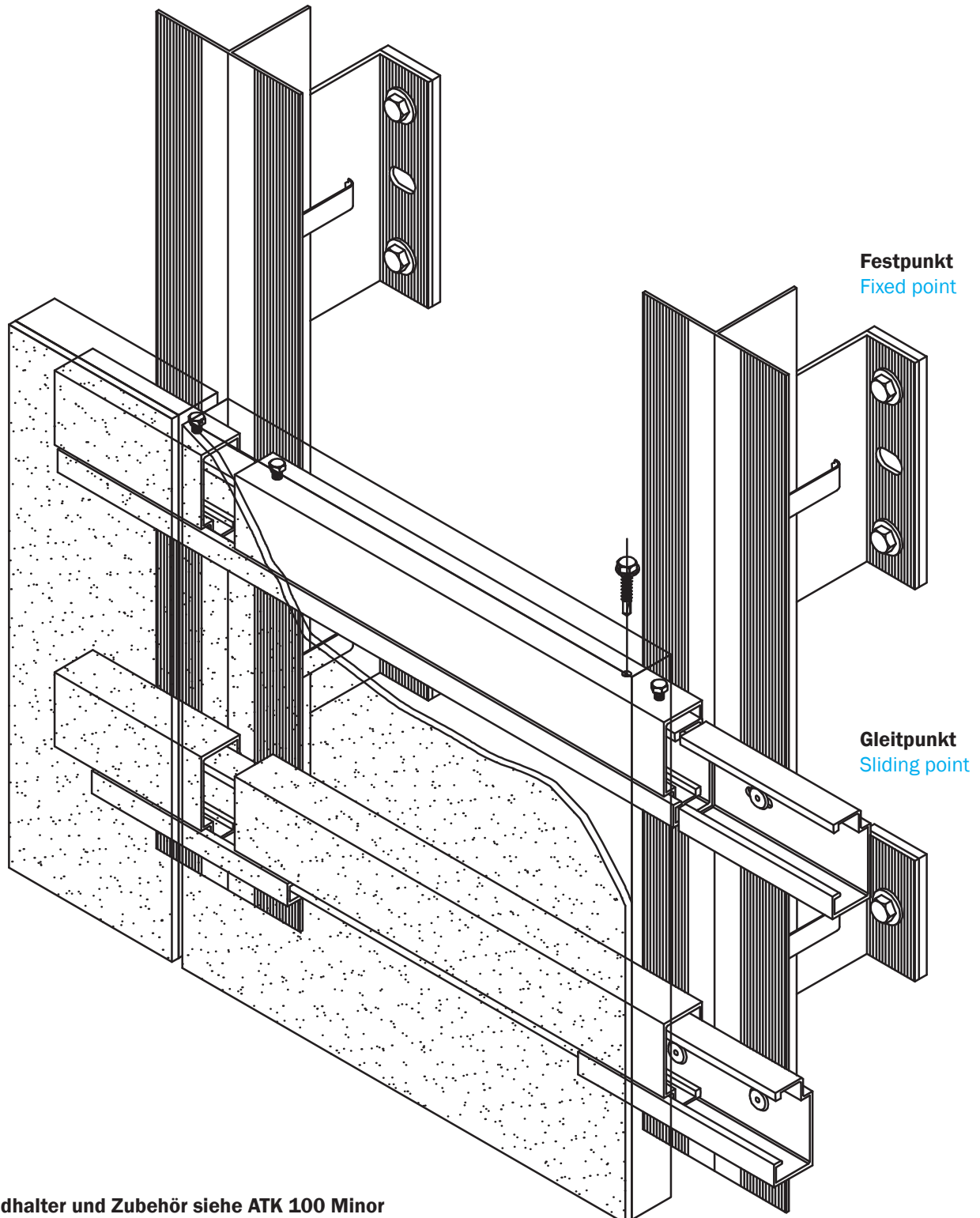


Wandhalter und Zubehör siehe ATK 100 Minor
Wall brackets and accessories see ATK 100 Minor

Konstruktionsbeispiel ATK 103 P + ATK 100 Minor

Construction example ATK 103 P + ATK 100 Minor

Verbundsysteme, verdeckte Befestigung
Composite systems, hidden fixing

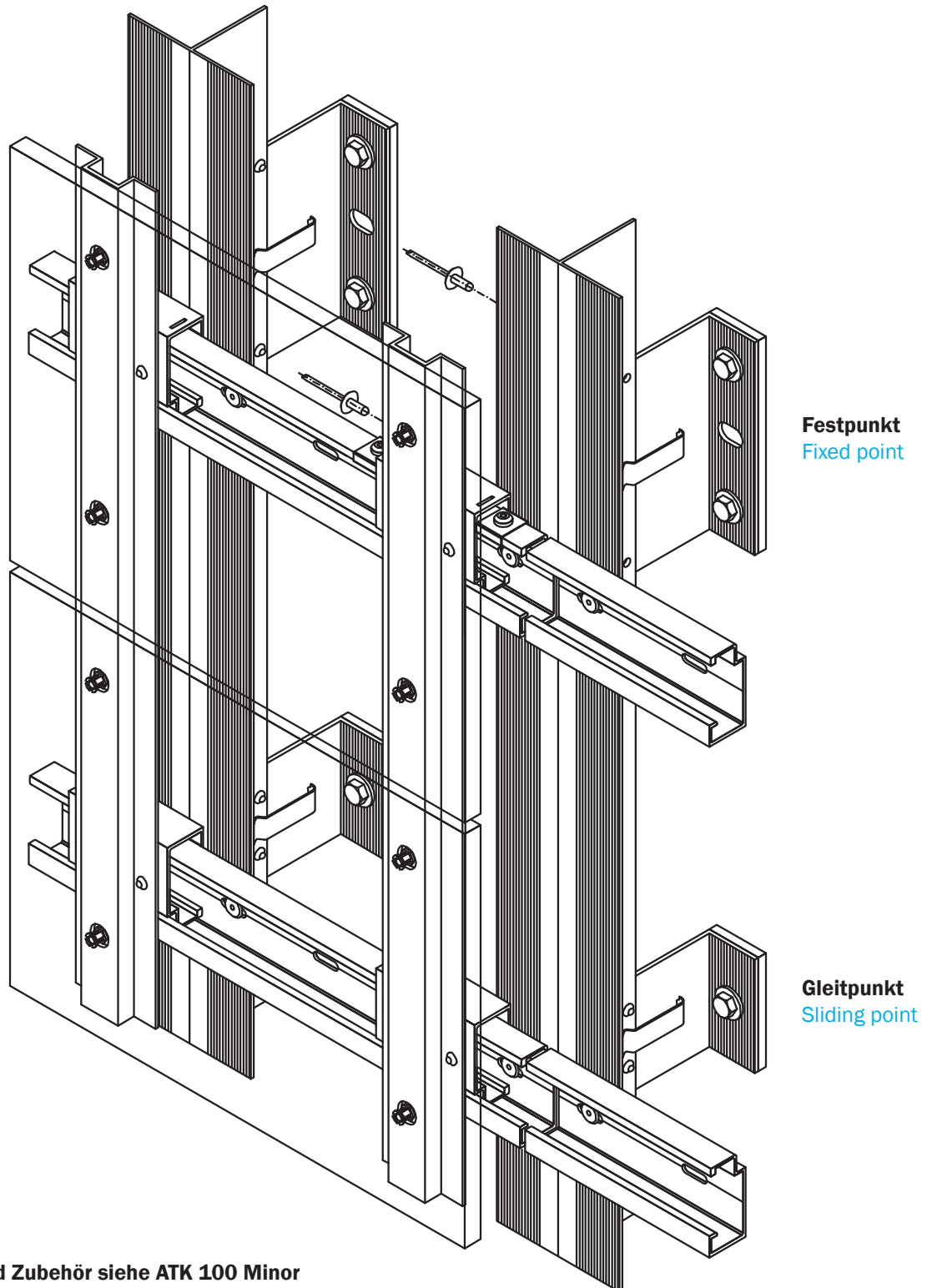


Wandhalter und Zubehör siehe ATK 100 Minor
Wall brackets and accessories see ATK 100 Minor

Konstruktionsbeispiel ATK 103 V + ATK 100 Minor

Construction example ATK 103 V + ATK 100 Minor

Ebene Platten, verdeckte Befestigung auf Plattentragprofil
Plane facade panels, hidden fixing on combiner section

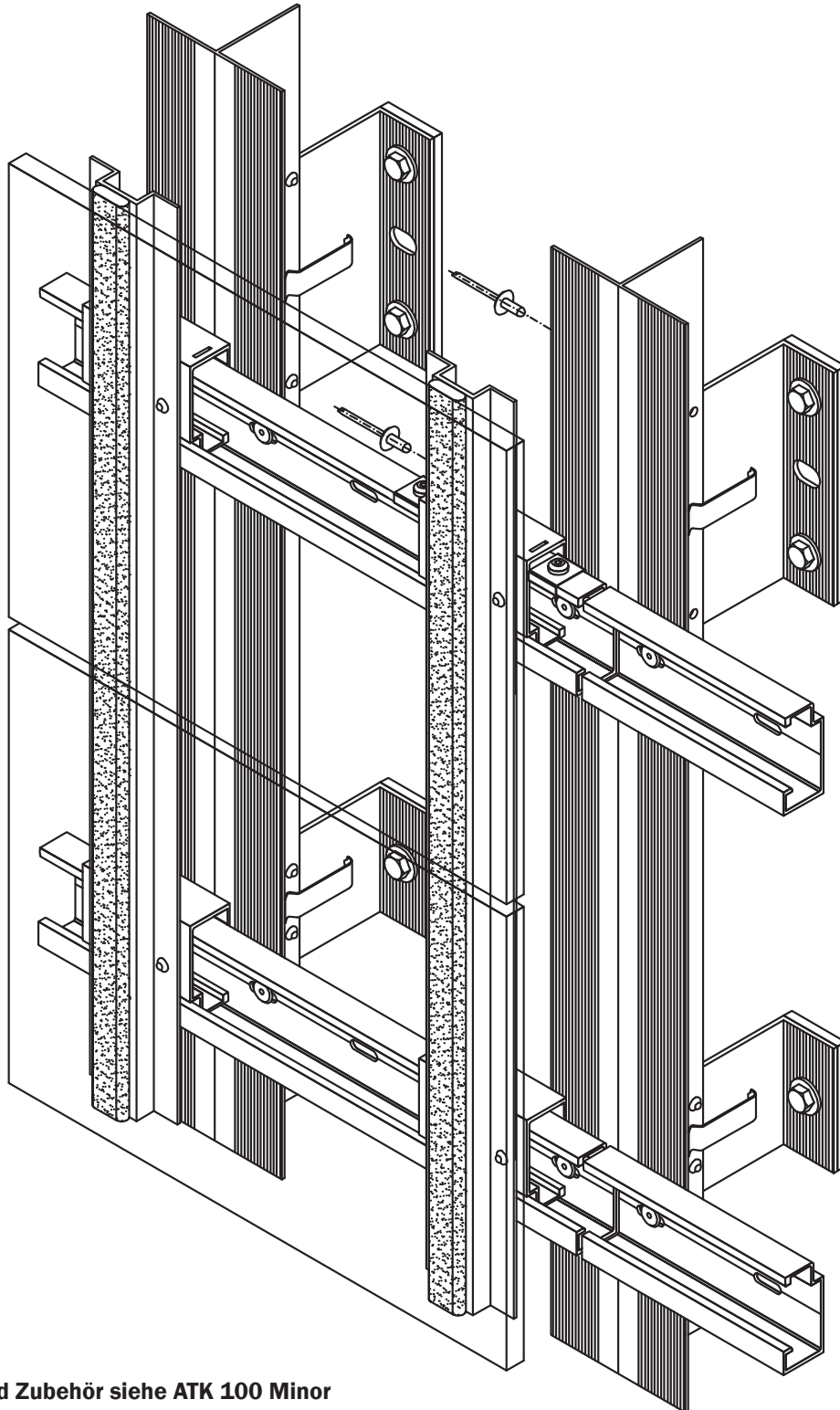


Wandhalter und Zubehör siehe ATK 100 Minor
Wall brackets and accessories see ATK 100 Minor

Konstruktionsbeispiel ATK 103 V + ATK 100 Minor

Construction example ATK 103 V + ATK 100 Minor

Ebene Platten, geklebt auf Plattentragprofil
Plane facade panels, bonded on combiner section



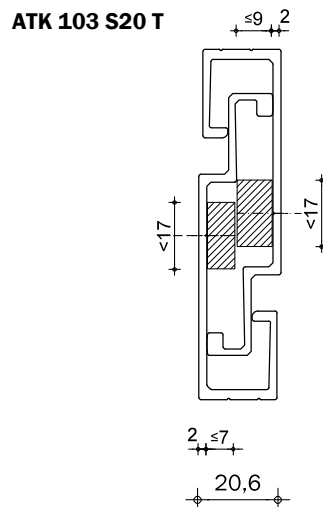
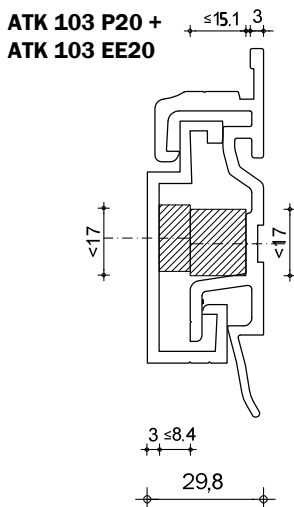
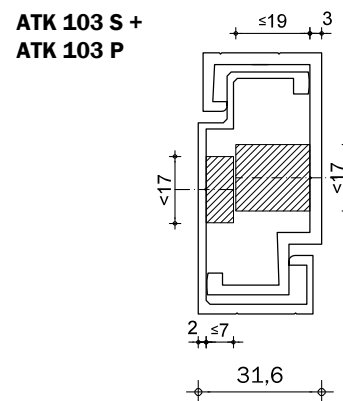
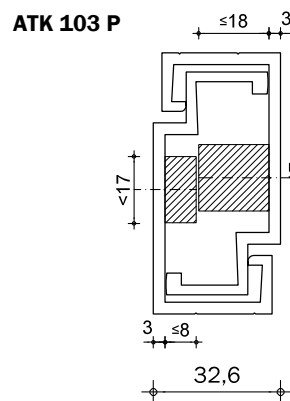
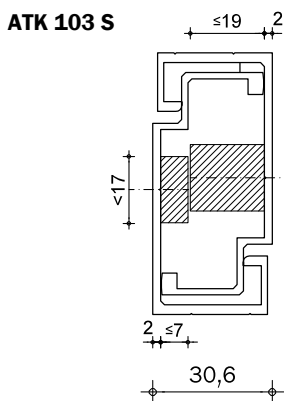
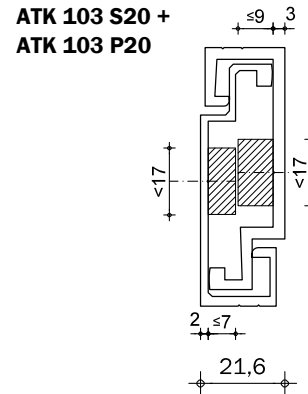
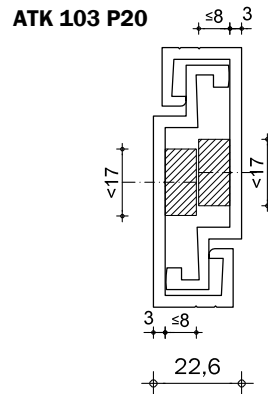
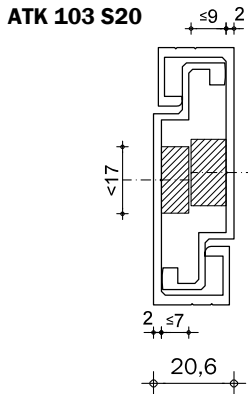
Wandhalter und Zubehör siehe ATK 100 Minor
Wall brackets and accessories see ATK 100 Minor

Aufbaumaße

Construction dimensions

Max. Durchmesser und Überstandslängen der Befestigungsmittel

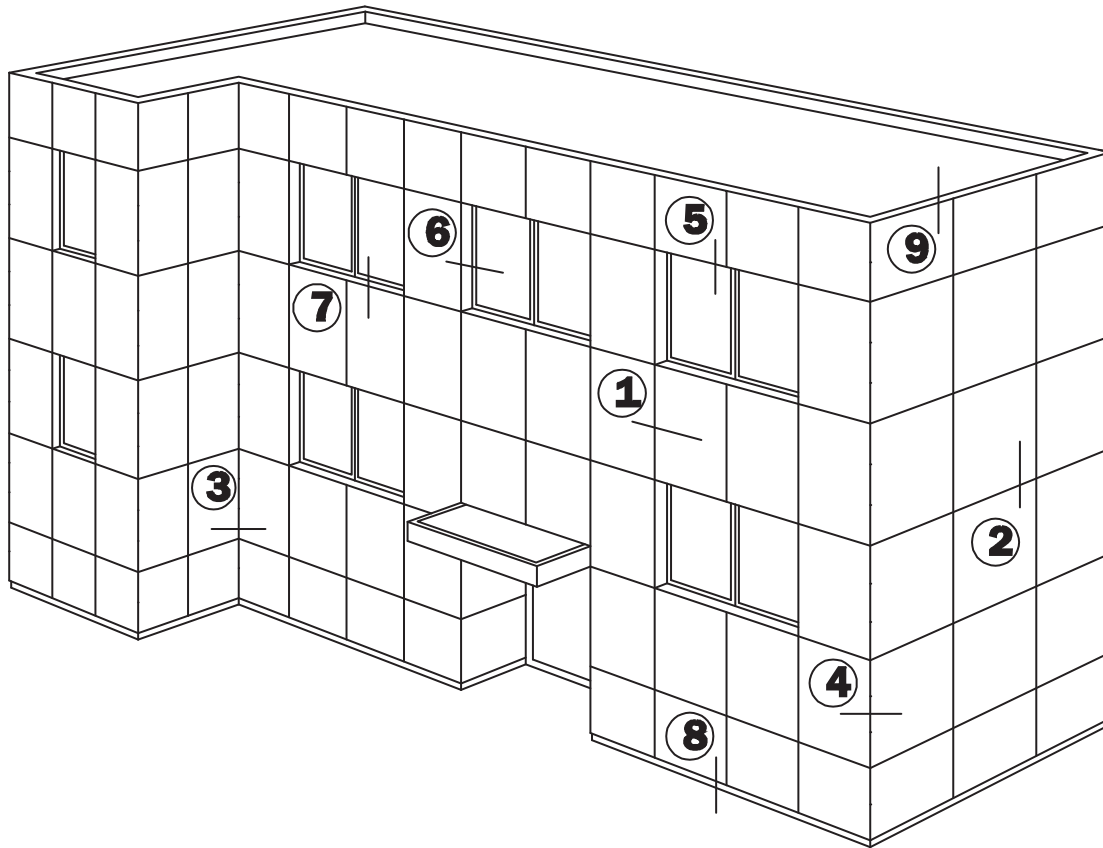
Max. diameters and projecting lengths of the fasteners



Passende vertikale BWM-Basiskonstruktionen ATK 100 Minor, ATK 100 ZeLa, ATK 101, ATK 601
Suitable vertical BWM-base support structure ATK 100 Minor, ATK 100 ZeLa, ATK 101, ATK 601

Schnittübersicht

Section overview



Schnitt 1
Section 1

Horizontalschnitt
Horizontal section

Schnitt 6
Section 6

Fensterleibung
Window embrasure

Schnitt 2
Section 2

Vertikalschnitt
Vertical section

Schnitt 7
Section 7

Fensterbank
Window sill

Schnitt 3
Section 3

Innenecke
Internal corner

Schnitt 8
Section 8

Sockelabschluss
Lower edge (bottom end)

Schnitt 4
Section 4

Außenecke
External corner

Schnitt 9
Section 9

Attikaabschluss
Attic connection (top end)

Schnitt 5
Section 5

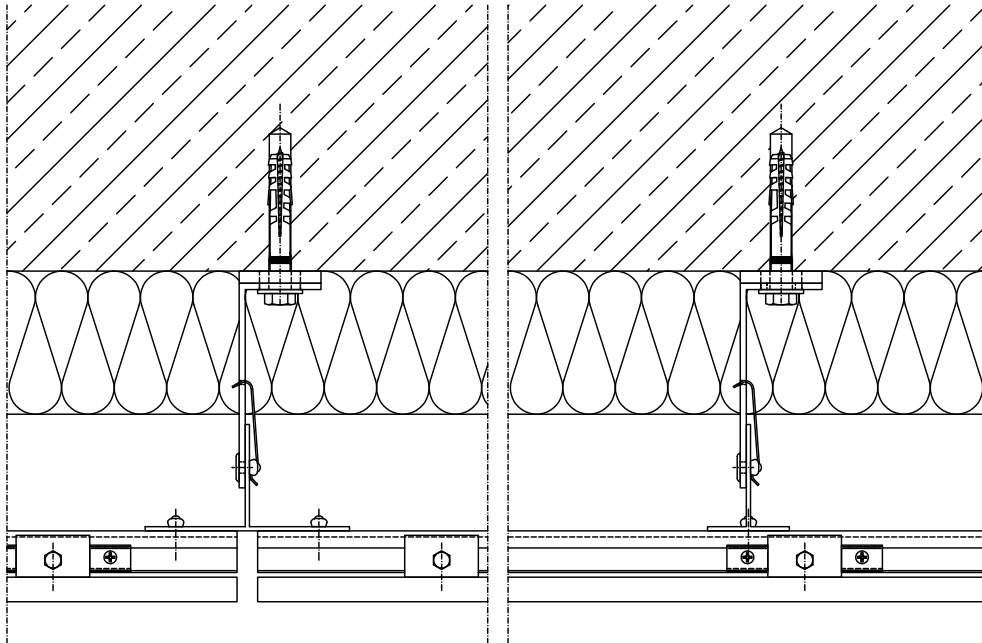
Jalousiekasten
Roller-blind box

Schnitte ATK 103 P20 + ATK 100 Minor

Sections ATK 103 P20 + ATK 100 Minor

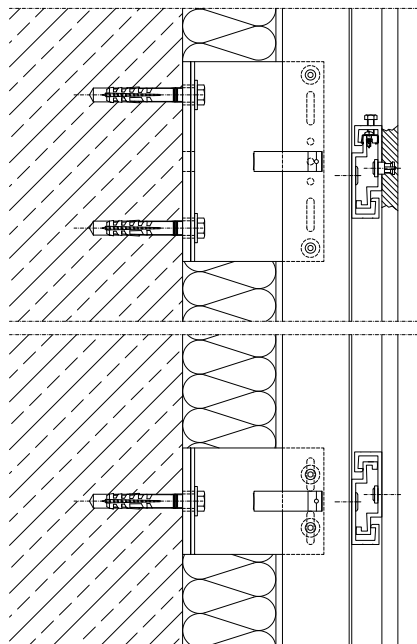
Schnitt 1 Horizontalschnitt

Section 1 Horizontal section



Schnitt 2 Vertikalschnitt

Section 2 Vertical section



Angrenzende Bauteile sind hier nur schematisch dargestellt. Die konkrete Detailausbildung ist unter Beachtung von Normen, Vorschriften und Richtlinien objektbezogen separat zu planen.

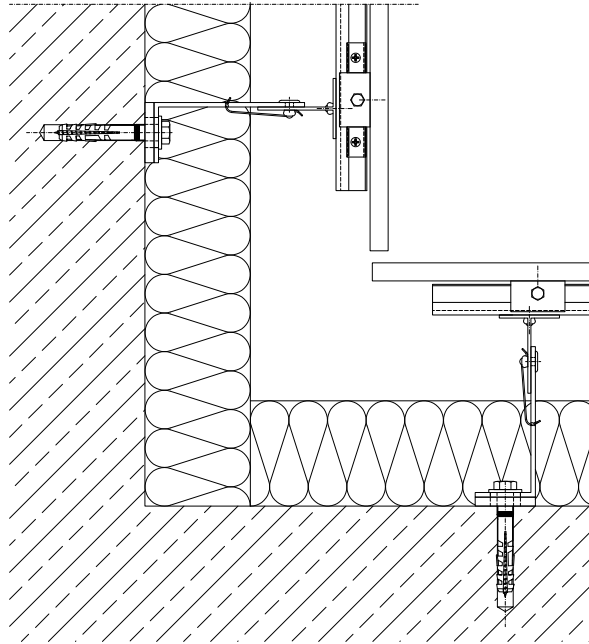
Adjacent components are shown here only schematically. The concrete details are to be planned separately in respect of the particular building involved. This must be done in accordance with the relevant standards, regulations and guidelines.

Schnitte ATK 103 P20 + ATK 100 Minor

Sections ATK 103 P20 + ATK 100 Minor

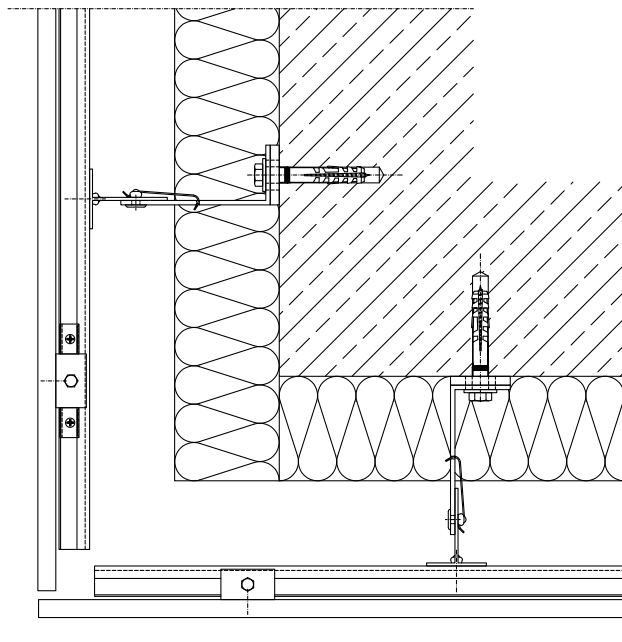
Schnitt 3 Innenecke

Section 3 Internal corner



Schnitt 4 Außenecke

Section 4 External corner



Angrenzende Bauteile sind hier nur schematisch dargestellt. Die konkrete Detailausbildung ist unter Beachtung von Normen, Vorschriften und Richtlinien objektbezogen separat zu planen.

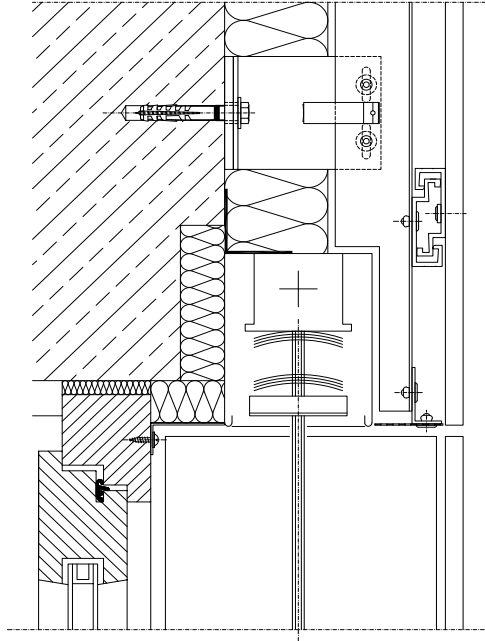
Adjacent components are shown here only schematically. The concrete details are to be planned separately in respect of the particular building involved. This must be done in accordance with the relevant standards, regulations and guidelines.

Schnitte ATK 103 P20 + ATK 100 Minor

Sections ATK 103 P20 + ATK 100 Minor

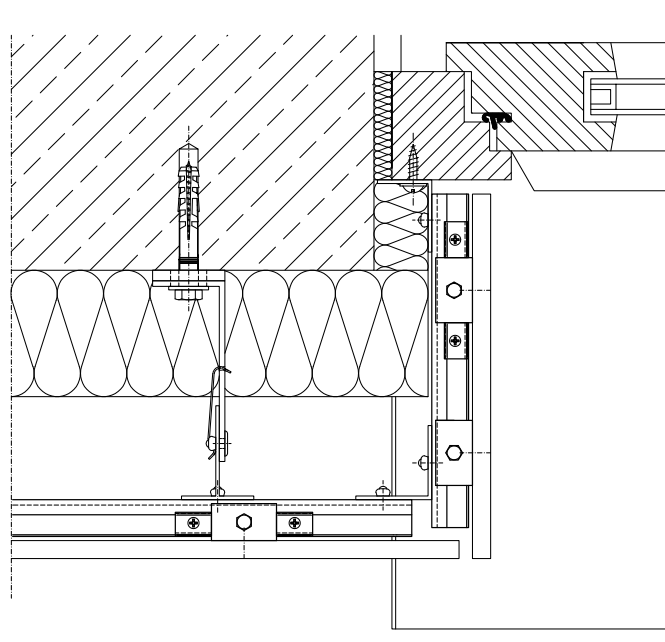
Schnitt 5 Jalousiekasten

Section 5 Roller-blind box



Schnitt 6a Fensterleibung

Section 6a Window embrasure



Angrenzende Bauteile sind hier nur schematisch dargestellt. Die konkrete Detailausbildung ist unter Beachtung von Normen, Vorschriften und Richtlinien objektbezogen separat zu planen.

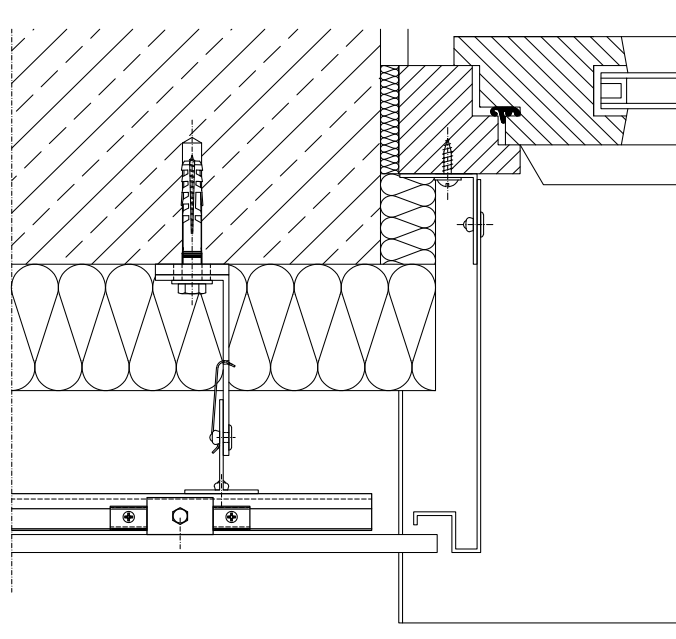
Adjacent components are shown here only schematically. The concrete details are to be planned separately in respect of the particular building involved. This must be done in accordance with the relevant standards, regulations and guidelines.

Schnitte ATK 103 P20 + ATK 100 Minor

Sections ATK 103 P20 + ATK 100 Minor

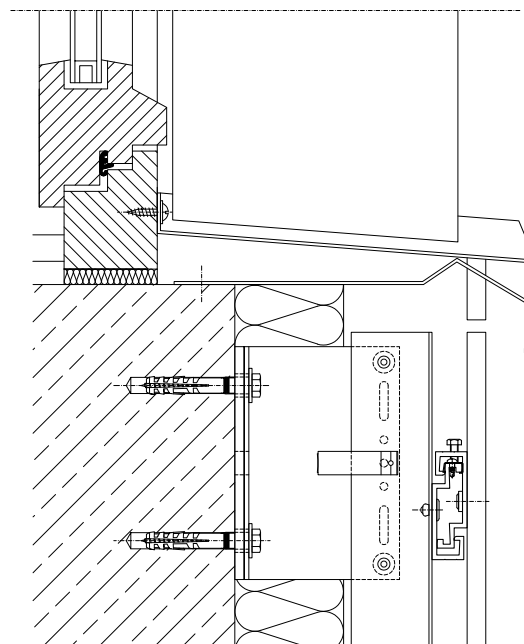
Schnitt 6b Fensterleibung mit Aluminium

Section 6b Window embrasure with aluminium



Schnitt 7 Fensterbank

Section 7 Window sill



Angrenzende Bauteile sind hier nur schematisch dargestellt. Die konkrete Detailausbildung ist unter Beachtung von Normen, Vorschriften und Richtlinien objektbezogen separat zu planen.

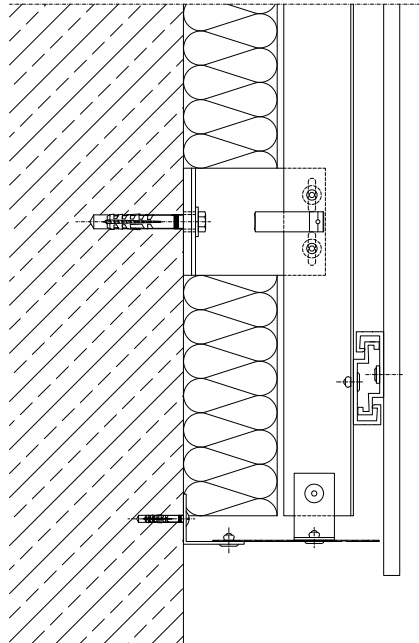
Adjacent components are shown here only schematically. The concrete details are to be planned separately in respect of the particular building involved. This must be done in accordance with the relevant standards, regulations and guidelines.

Schnitte ATK 103 P20 + ATK 100 Minor

Sections ATK 103 P20 + ATK 100 Minor

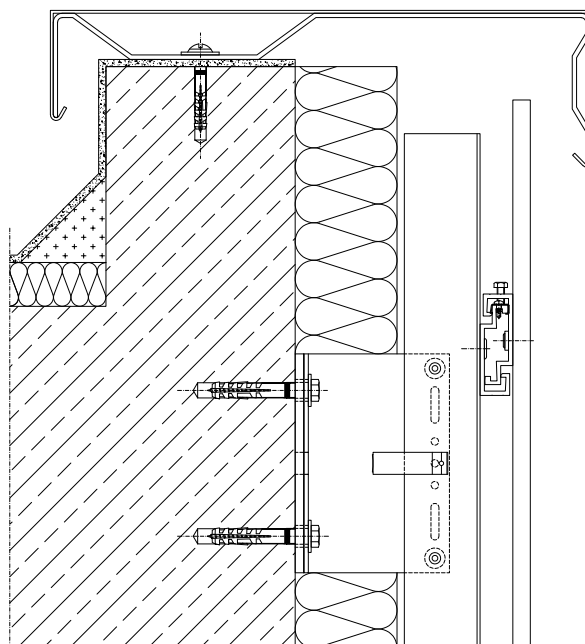
Schnitt 8 Sockelabschluss

Section 8 Lower edge



Schnitt 9 Attikaabschluss

Section 9 Attic connection



Angrenzende Bauteile sind hier nur schematisch dargestellt. Die konkrete Detailausbildung ist unter Beachtung von Normen, Vorschriften und Richtlinien objektbezogen separat zu planen.

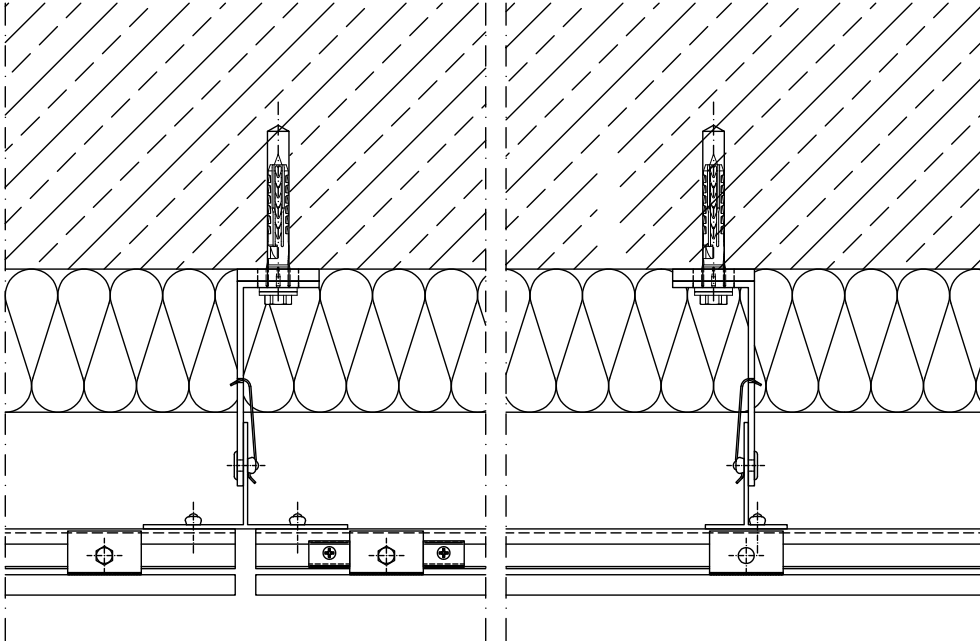
Adjacent components are shown here only schematically. The concrete details are to be planned separately in respect of the particular building involved. This must be done in accordance with the relevant standards, regulations and guidelines.

Schnitte ATK 103 S20 T + ATK 100 Minor

Sections ATK 103 S20 T + ATK 100 Minor

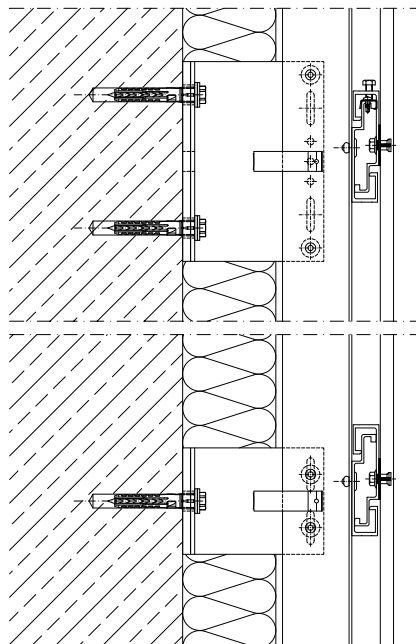
Schnitt 1 Horizontalschnitt

Section 1 Horizontal section



Schnitt 2 Vertikalschnitt

Section 2 Vertical section



Angrenzende Bauteile sind hier nur schematisch dargestellt. Die konkrete Detailausbildung ist unter Beachtung von Normen, Vorschriften und Richtlinien objektbezogen separat zu planen.

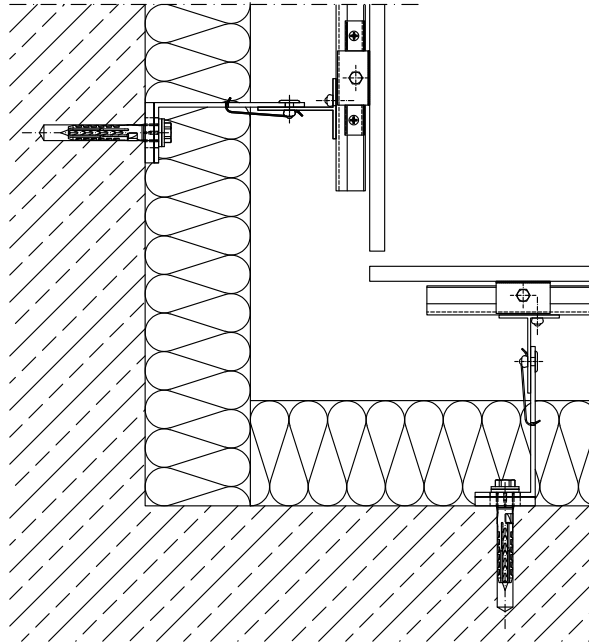
Adjacent components are shown here only schematically. The concrete details are to be planned separately in respect of the particular building involved. This must be done in accordance with the relevant standards, regulations and guidelines.

Schnitte ATK 103 S20 T + ATK 100 Minor

Sections ATK 103 S20 T + ATK 100 Minor

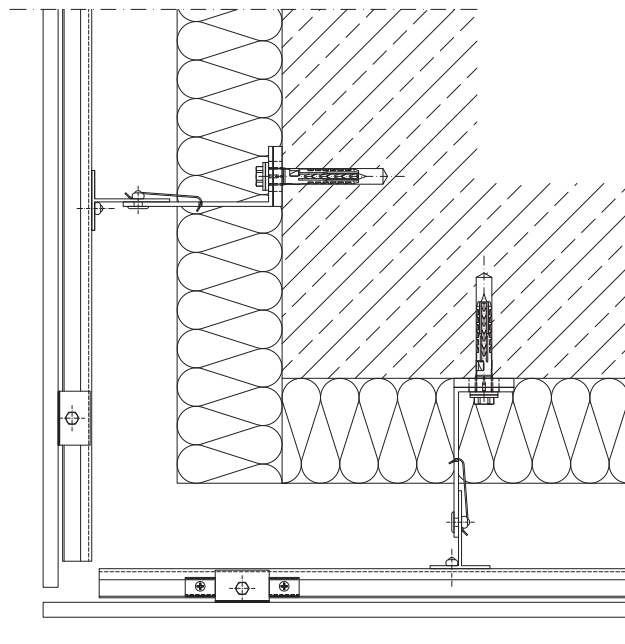
Schnitt 3 Innenecke

Section 3 Internal corner



Schnitt 4 Außenecke

Section 4 External corner



Angrenzende Bauteile sind hier nur schematisch dargestellt. Die konkrete Detailausbildung ist unter Beachtung von Normen, Vorschriften und Richtlinien objektbezogen separat zu planen.

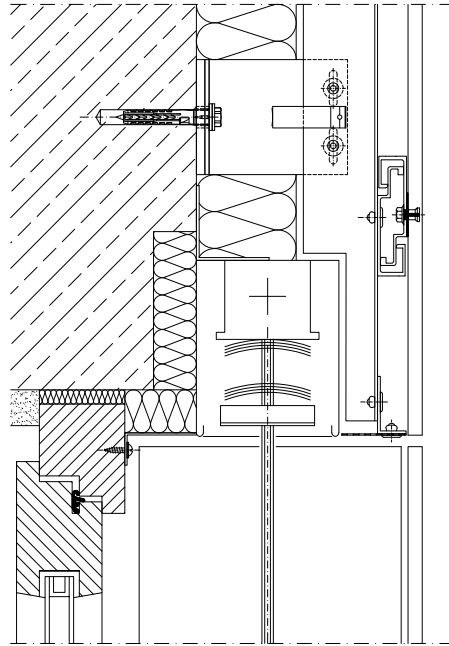
Adjacent components are shown here only schematically. The concrete details are to be planned separately in respect of the particular building involved. This must be done in accordance with the relevant standards, regulations and guidelines.

Schnitte ATK 103 S20 T + ATK 100 Minor

Sections ATK 103 S20 T + ATK 100 Minor

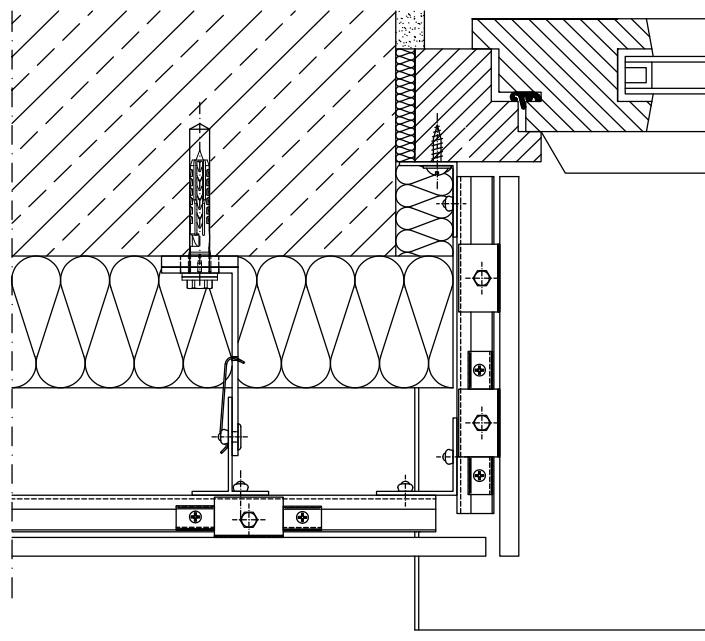
Schnitt 5 Jalousiekasten

Section 5 Roller-blind box



Schnitt 6a Fensterleibung

Section 6a Window embrasure



Angrenzende Bauteile sind hier nur schematisch dargestellt. Die konkrete Detailausbildung ist unter Beachtung von Normen, Vorschriften und Richtlinien objektbezogen separat zu planen.

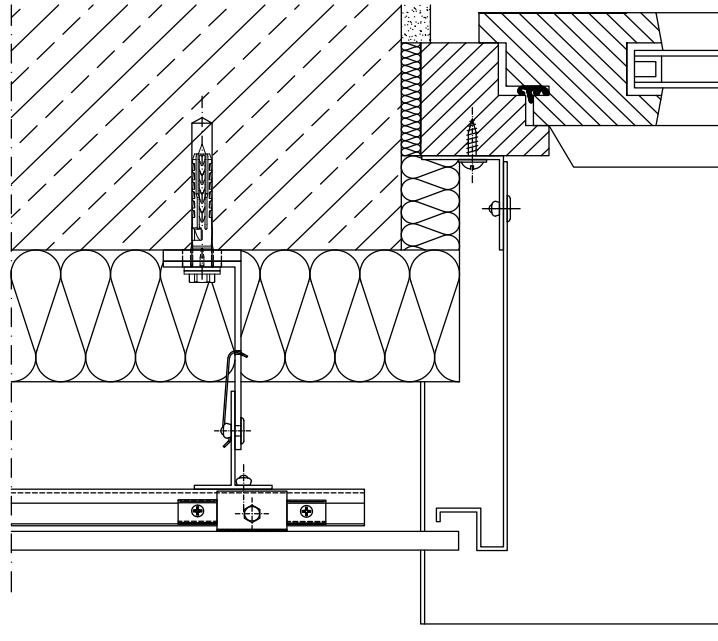
Adjacent components are shown here only schematically. The concrete details are to be planned separately in respect of the particular building involved. This must be done in accordance with the relevant standards, regulations and guidelines.

Schnitte ATK 103 S20 T + ATK 100 Minor

Sections ATK 103 S20 T + ATK 100 Minor

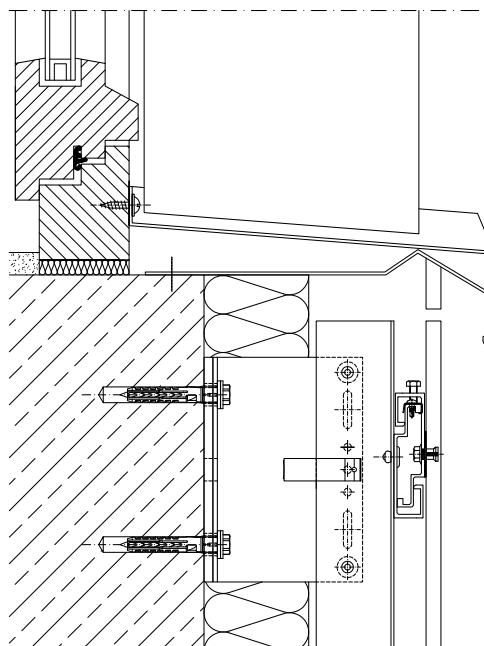
Schnitt 6b Fensterleibung mit Aluminium

Section 6b Window embrasure with aluminium



Schnitt 7 Fensterbank

Section 7 Window sill



Angrenzende Bauteile sind hier nur schematisch dargestellt. Die konkrete Detailausbildung ist unter Beachtung von Normen, Vorschriften und Richtlinien objektbezogen separat zu planen.

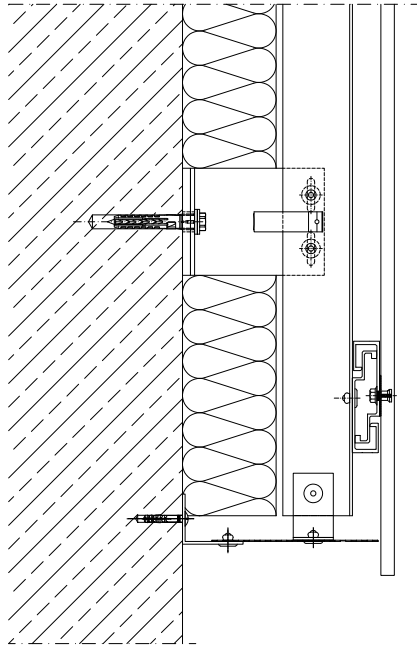
Adjacent components are shown here only schematically. The concrete details are to be planned separately in respect of the particular building involved. This must be done in accordance with the relevant standards, regulations and guidelines.

Schnitte ATK 103 S20 T + ATK 100 Minor

Sections ATK 103 S20 T + ATK 100 Minor

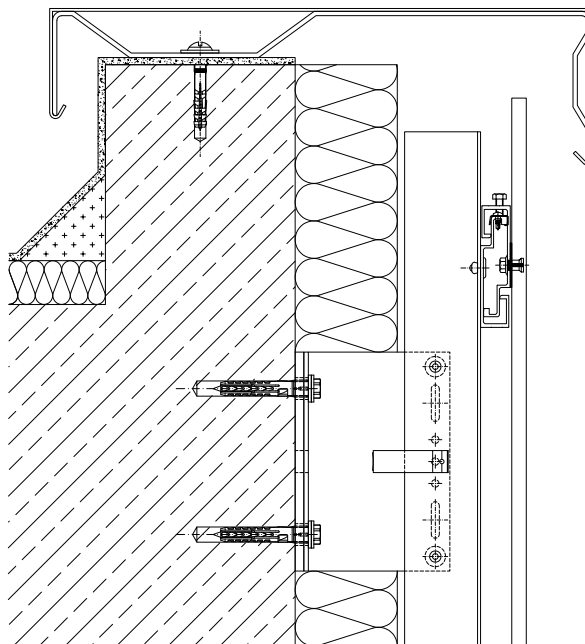
Schnitt 8 Sockelabschluss

Section 8 Lower edge



Schnitt 9 Attikaabschluss

Section 9 Attic connection



Angrenzende Bauteile sind hier nur schematisch dargestellt. Die konkrete Detailausbildung ist unter Beachtung von Normen, Vorschriften und Richtlinien objektbezogen separat zu planen.

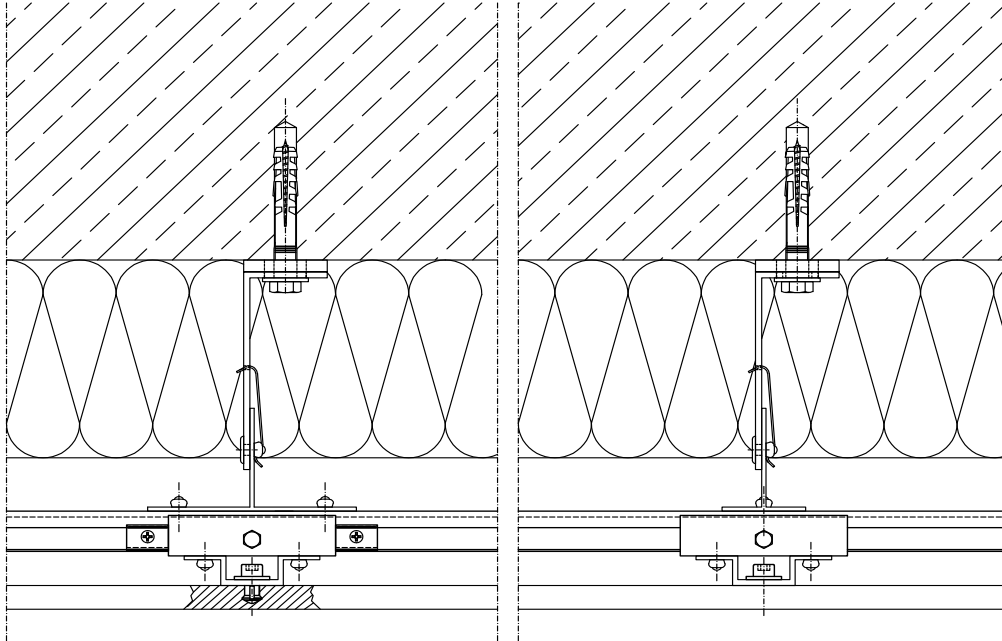
Adjacent components are shown here only schematically. The concrete details are to be planned separately in respect of the particular building involved. This must be done in accordance with the relevant standards, regulations and guidelines.

Schnitte ATK 103 P20 + ATK 100 Minor + ATK 103 V

Sections ATK 103 P20 + ATK 100 Minor + ATK 103 V

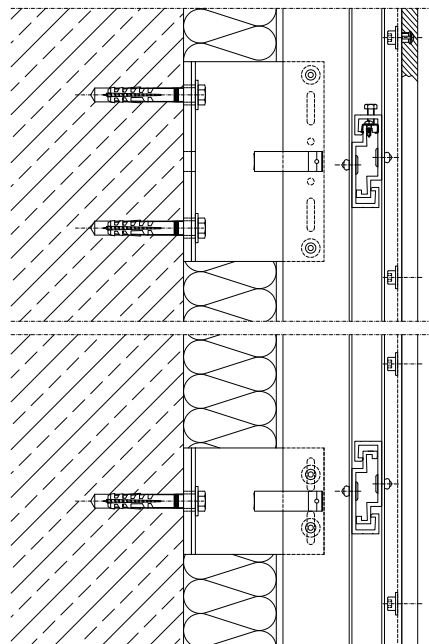
Schnitt 1 Horizontalschnitt

Section 1 Horizontal section



Schnitt 2 Vertikalschnitt

Section 2 Vertical section



Angrenzende Bauteile sind hier nur schematisch dargestellt. Die konkrete Detailausbildung ist unter Beachtung von Normen, Vorschriften und Richtlinien objektbezogen separat zu planen.

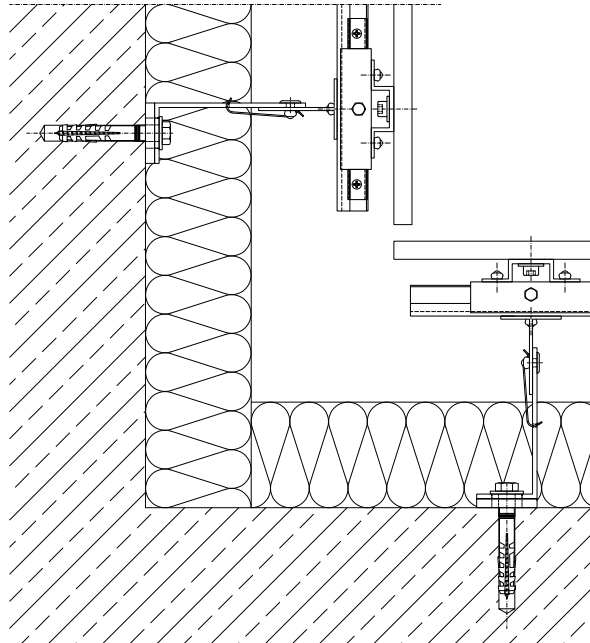
Adjacent components are shown here only schematically. The concrete details are to be planned separately in respect of the particular building involved. This must be done in accordance with the relevant standards, regulations and guidelines.

Schnitte ATK 103 P20 + ATK 100 Minor + ATK 103 V

Sections ATK 103 P20 + ATK 100 Minor + ATK 103 V

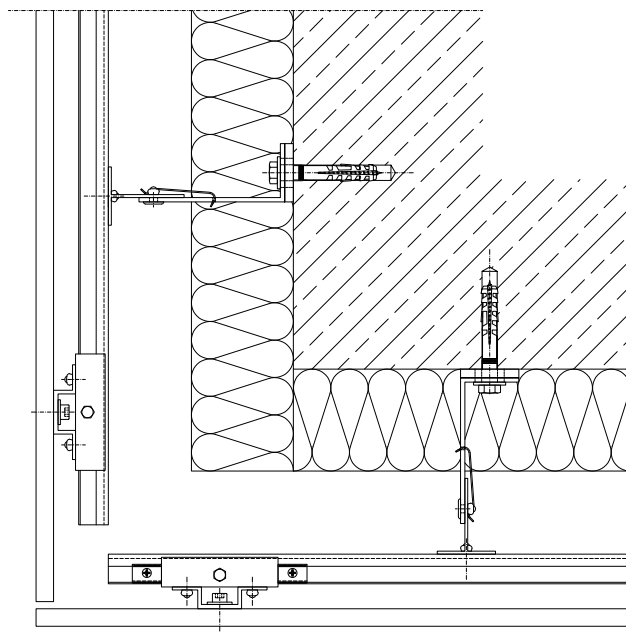
Schnitt 3 Innenecke

Section 3 Internal corner



Schnitt 4 Außenecke

Section 4 External corner



Angrenzende Bauteile sind hier nur schematisch dargestellt. Die konkrete Detailausbildung ist unter Beachtung von Normen, Vorschriften und Richtlinien objektbezogen separat zu planen.

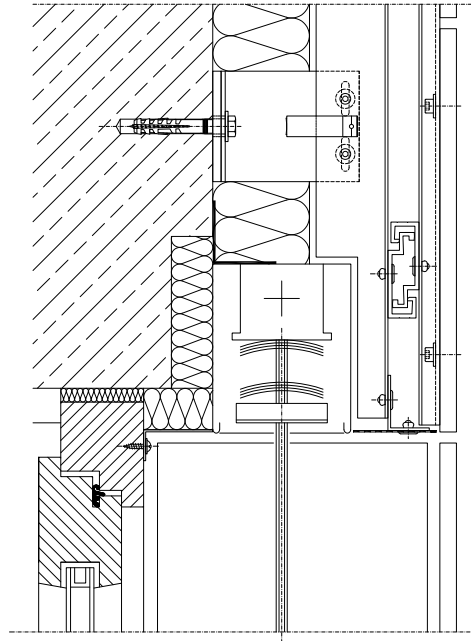
Adjacent components are shown here only schematically. The concrete details are to be planned separately in respect of the particular building involved. This must be done in accordance with the relevant standards, regulations and guidelines.

Schnitte ATK 103 P20 + ATK 100 Minor + ATK 103 V

Sections ATK 103 P20 + ATK 100 Minor + ATK 103 V

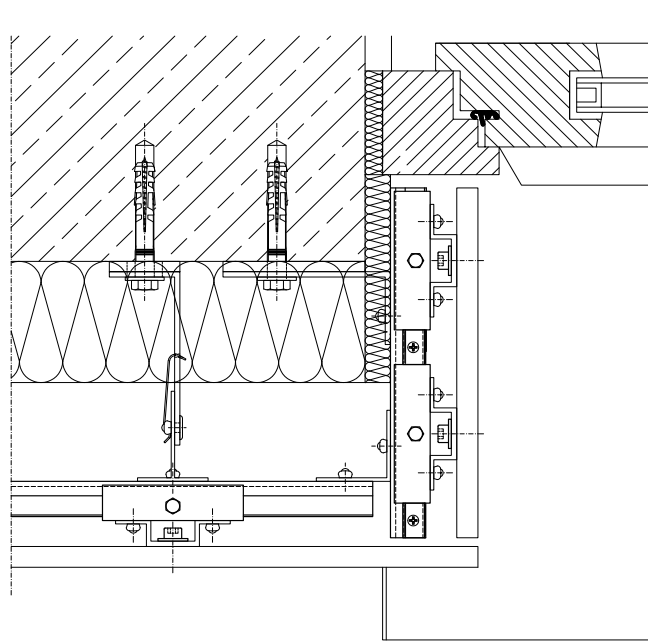
Schnitt 5 Jalousiekasten

Section 5 Roller-blind box



Schnitt 6a Fensterleibung

Section 6a Window embrasure



Angrenzende Bauteile sind hier nur schematisch dargestellt. Die konkrete Detailausbildung ist unter Beachtung von Normen, Vorschriften und Richtlinien objektbezogen separat zu planen.

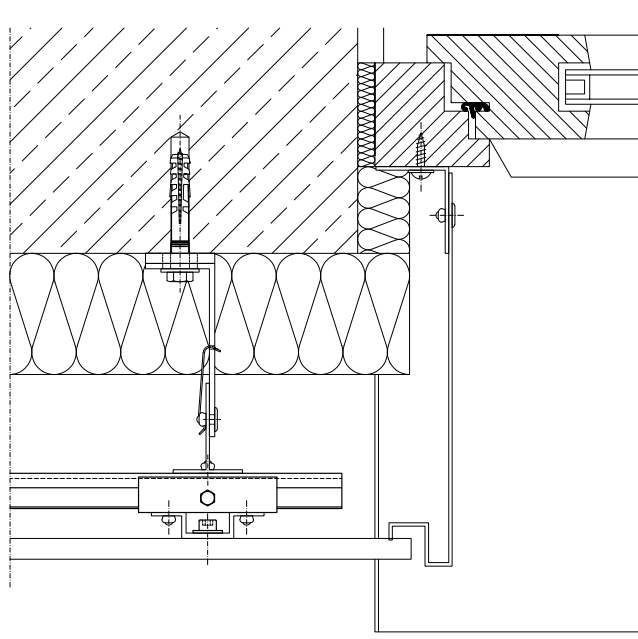
Adjacent components are shown here only schematically. The concrete details are to be planned separately in respect of the particular building involved. This must be done in accordance with the relevant standards, regulations and guidelines.

Schnitte ATK 103 P20 + ATK 100 Minor + ATK 103 V

Sections ATK 103 P20 + ATK 100 Minor + ATK 103 V

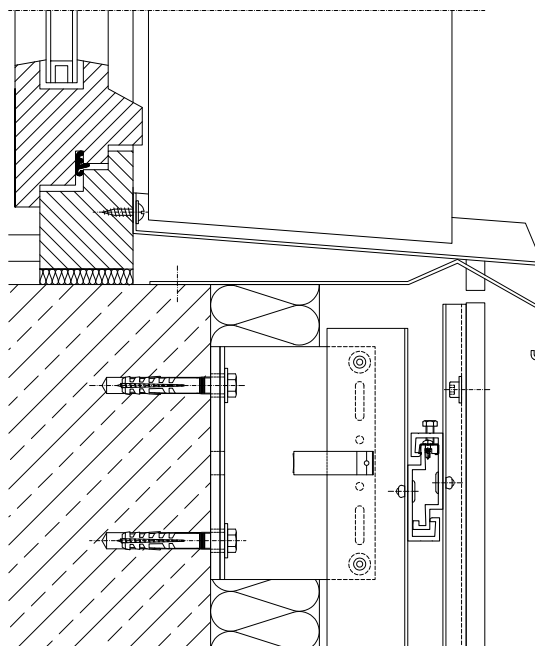
Schnitt 6b Fensterleibung mit Aluminium

Section 6b Window embrasure with aluminium



Schnitt 7 Fensterbank

Section 7 Window sill



Angrenzende Bauteile sind hier nur schematisch dargestellt. Die konkrete Detailausbildung ist unter Beachtung von Normen, Vorschriften und Richtlinien objektbezogen separat zu planen.

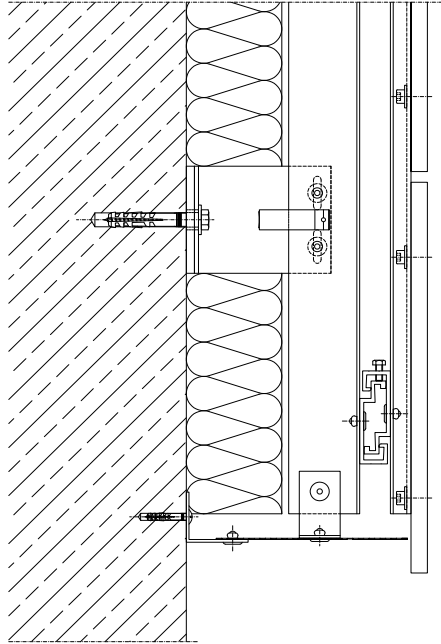
Adjacent components are shown here only schematically. The concrete details are to be planned separately in respect of the particular building involved. This must be done in accordance with the relevant standards, regulations and guidelines.

Schnitte ATK 103 P20 + ATK 100 Minor + ATK 103 V

Sections ATK 103 P20 + ATK 100 Minor + ATK 103 V

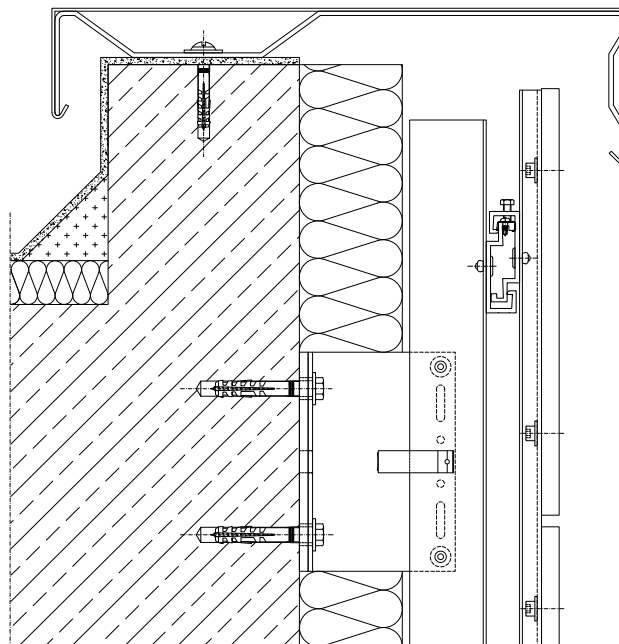
Schnitt 8 Sockelabschluss

Section 8 Lower edge



Schnitt 9 Attikaabschluss

Section 9 Attic connection



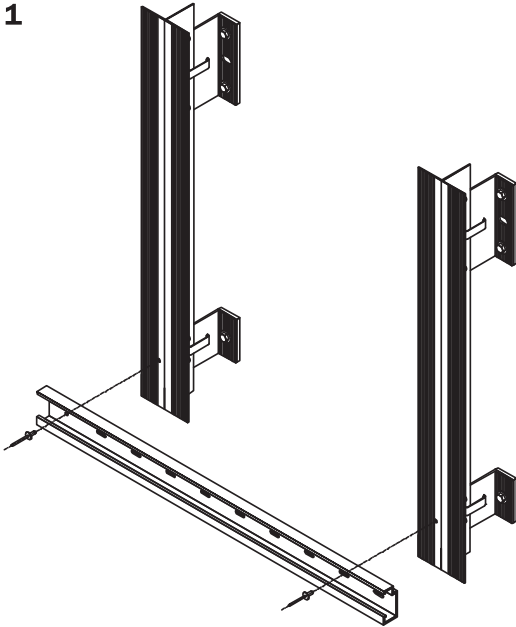
Angrenzende Bauteile sind hier nur schematisch dargestellt. Die konkrete Detailausbildung ist unter Beachtung von Normen, Vorschriften und Richtlinien objektbezogen separat zu planen.

Adjacent components are shown here only schematically. The concrete details are to be planned separately in respect of the particular building involved. This must be done in accordance with the relevant standards, regulations and guidelines.

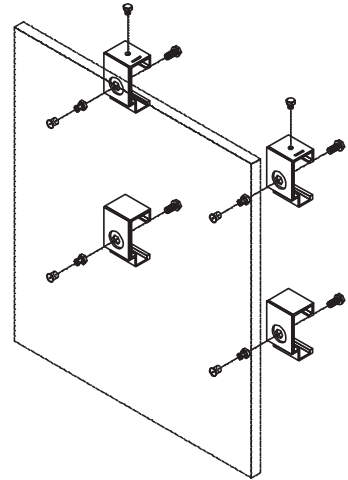
Montagefolge Kleinformat ATK 103

Mounting sequence small panels ATK 103

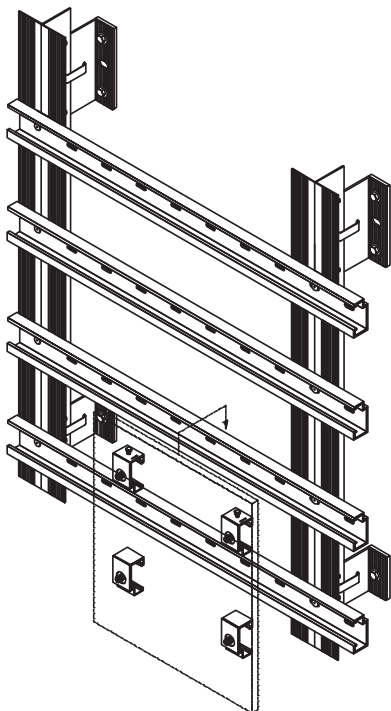
1



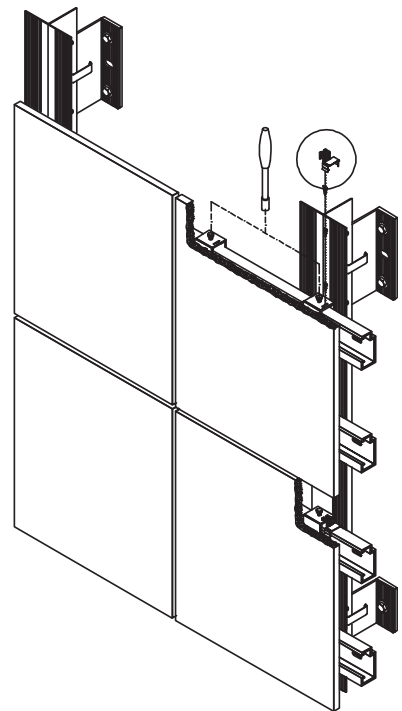
2



3

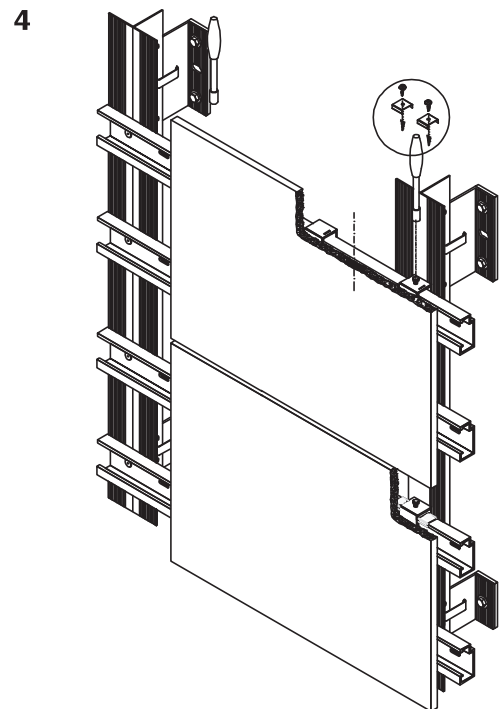
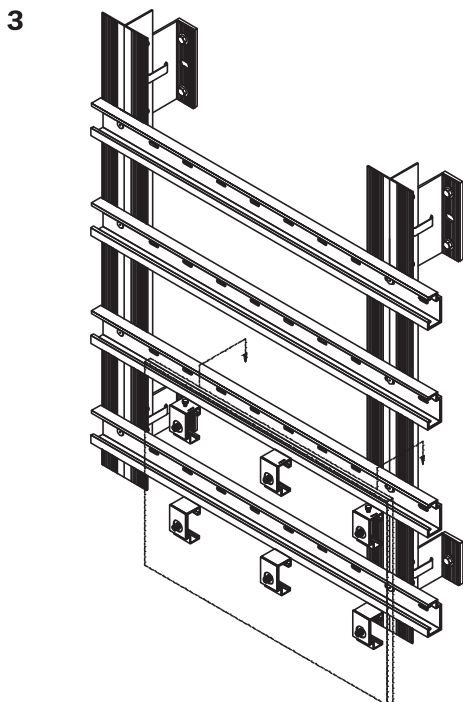
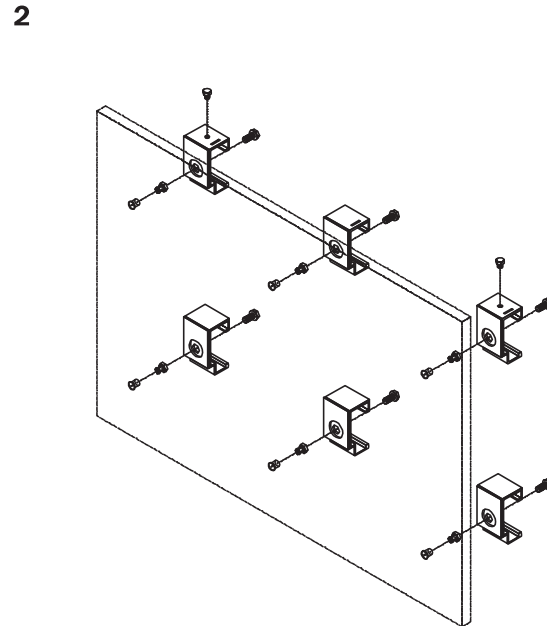
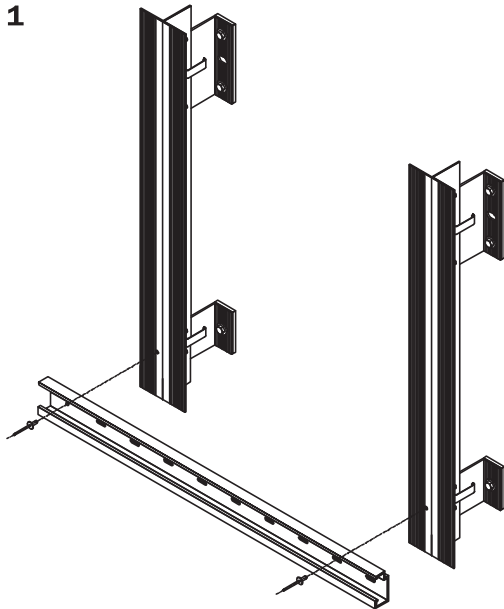


4



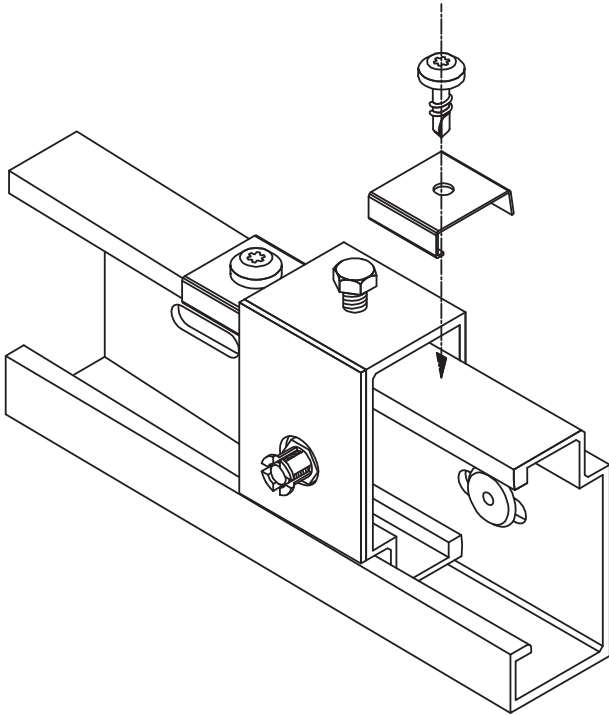
Montagefolge Großformate

Mounting sequence large panels



Agraffen-Fixierungen (für justierbare Agraffen)

Clasp restraint systems (for adjustable clasps)



U-Profilstücke - alle ATK 103 Systeme
U-pieces - all ATK 103 Systems

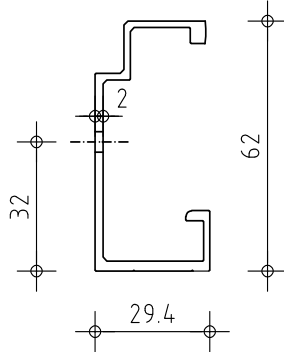
Tragprofile gelocht und ungelocht erhältlich

Support sections available perforated and non-perforated

ATK 103 S

ungelocht
non-perforated
Art. 668401

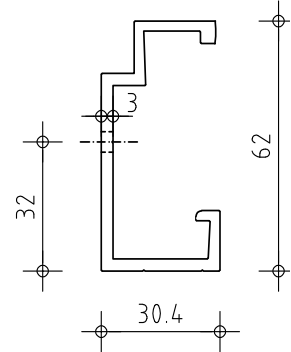
* gelocht
* perforated
Art. G68401



ATK 103 P

ungelocht
non-perforated
Art. 668402

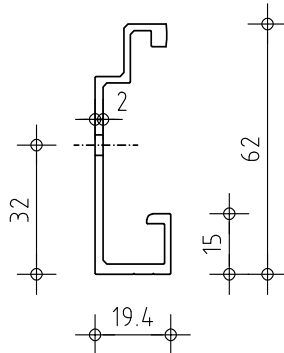
* gelocht
* perforated
Art. G68402



ATK 103 S20

ungelocht
non-perforated
Art. 668422

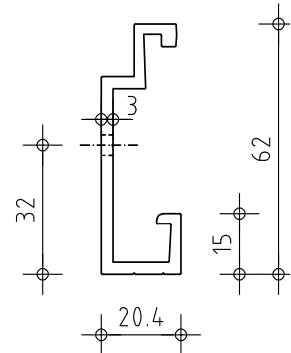
* gelocht
* perforated
Art. G68422



ATK 103 P20

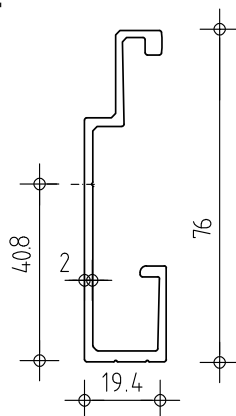
ungelocht
non-perforated
Art. 668420

* gelocht
* perforated
Art. G68420



ATK 103 S20 T

ungelocht
non-perforated
Art. 668440



* **Vorgelochte Profile (auf Anfrage)**

* Pre-perforated support sections (on demand)

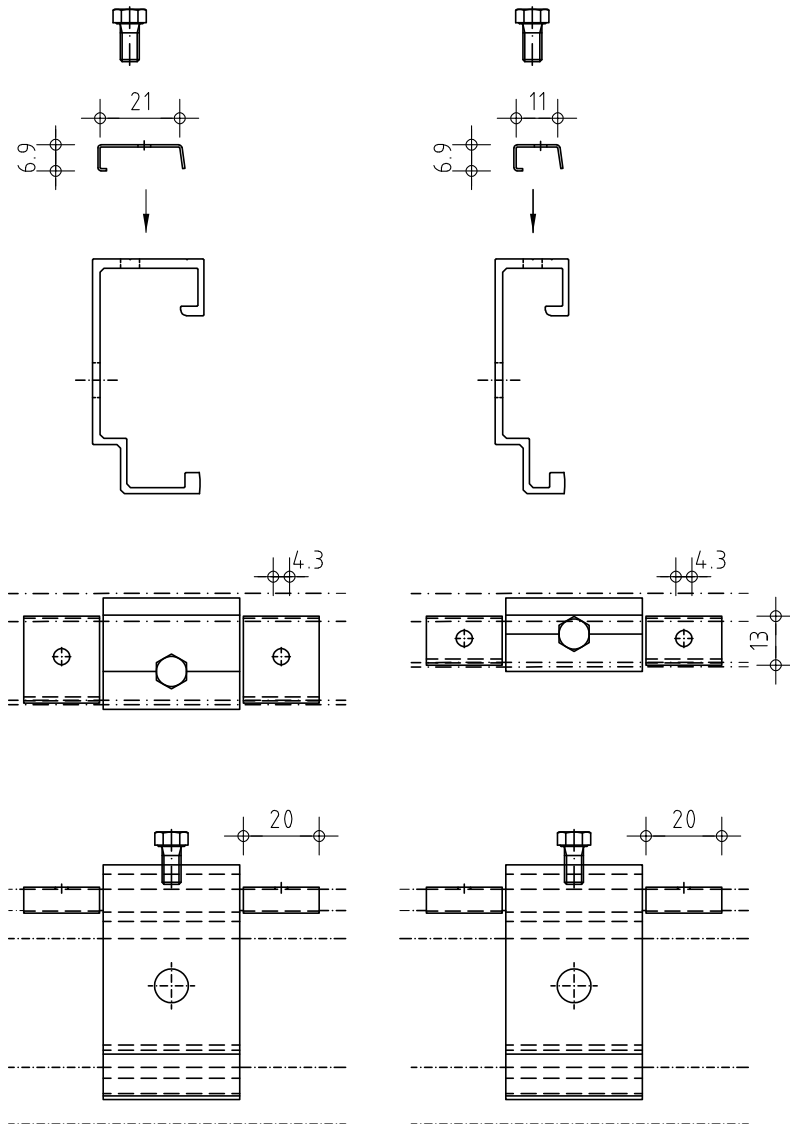
Agraffen-Fixierungen

Clasp restraint systems

U-Profilstücke U-Pieces

für Agraffen
 Typ S / P
 for clasps
 Type S / P

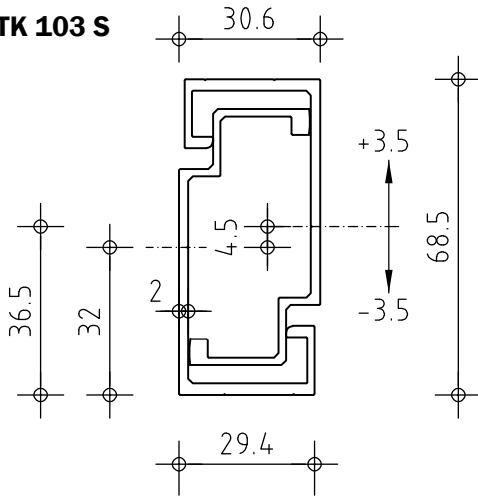
für Agraffen
 Typ S20 / P20 / EE20 / S20 / S20 T
 for clasps
 Type S20 / P20 / EE20 / S20 / S20 T



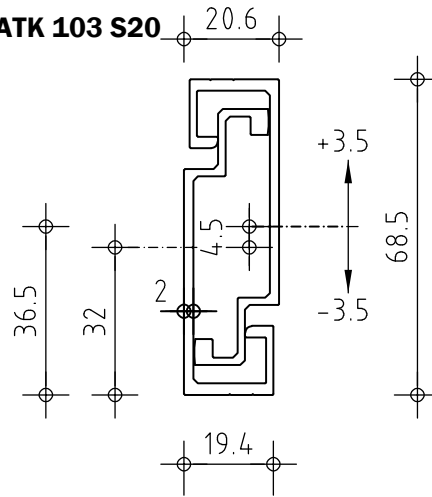
Mittlere Bauhöhe

Middle position

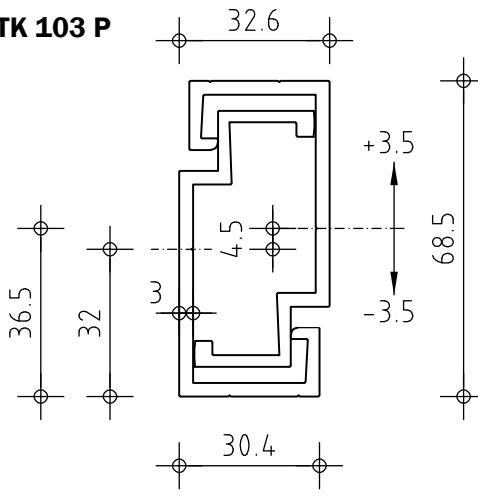
ATK 103 S



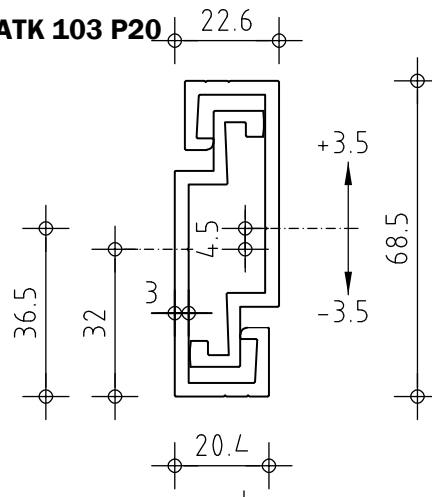
ATK 103 S20



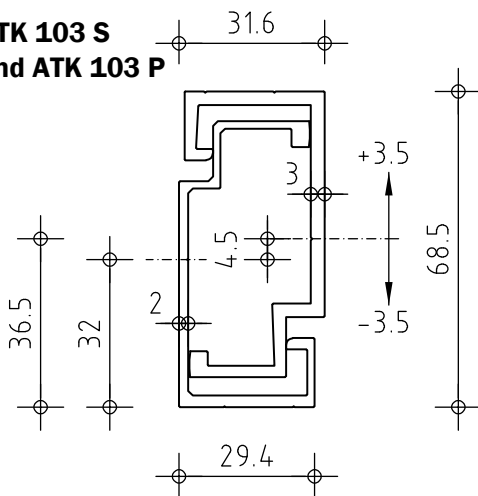
ATK 103 P



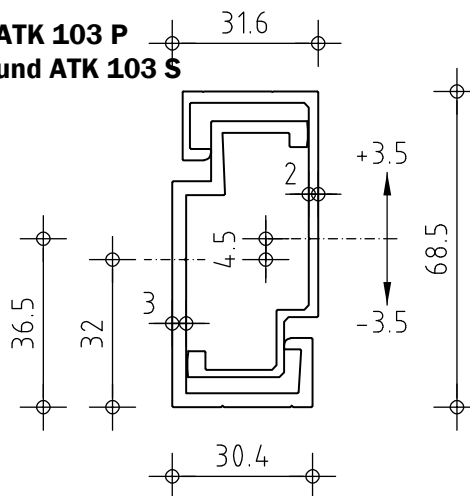
ATK 103 P20



**ATK 103 S
und ATK 103 P**



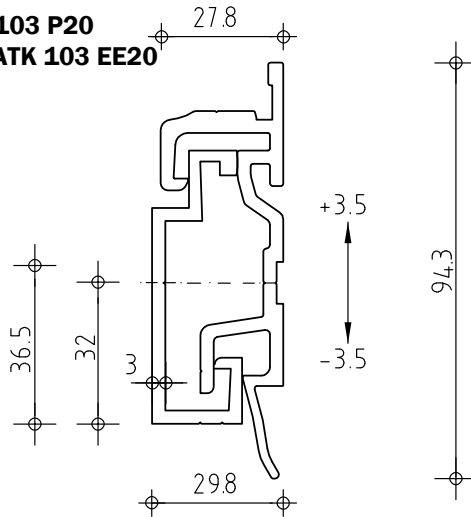
**ATK 103 P
und ATK 103 S**



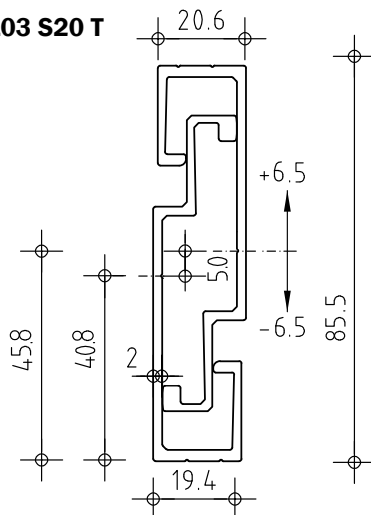
Mittlere Bauhöhe

Middle position

**ATK 103 P20
und ATK 103 EE20**

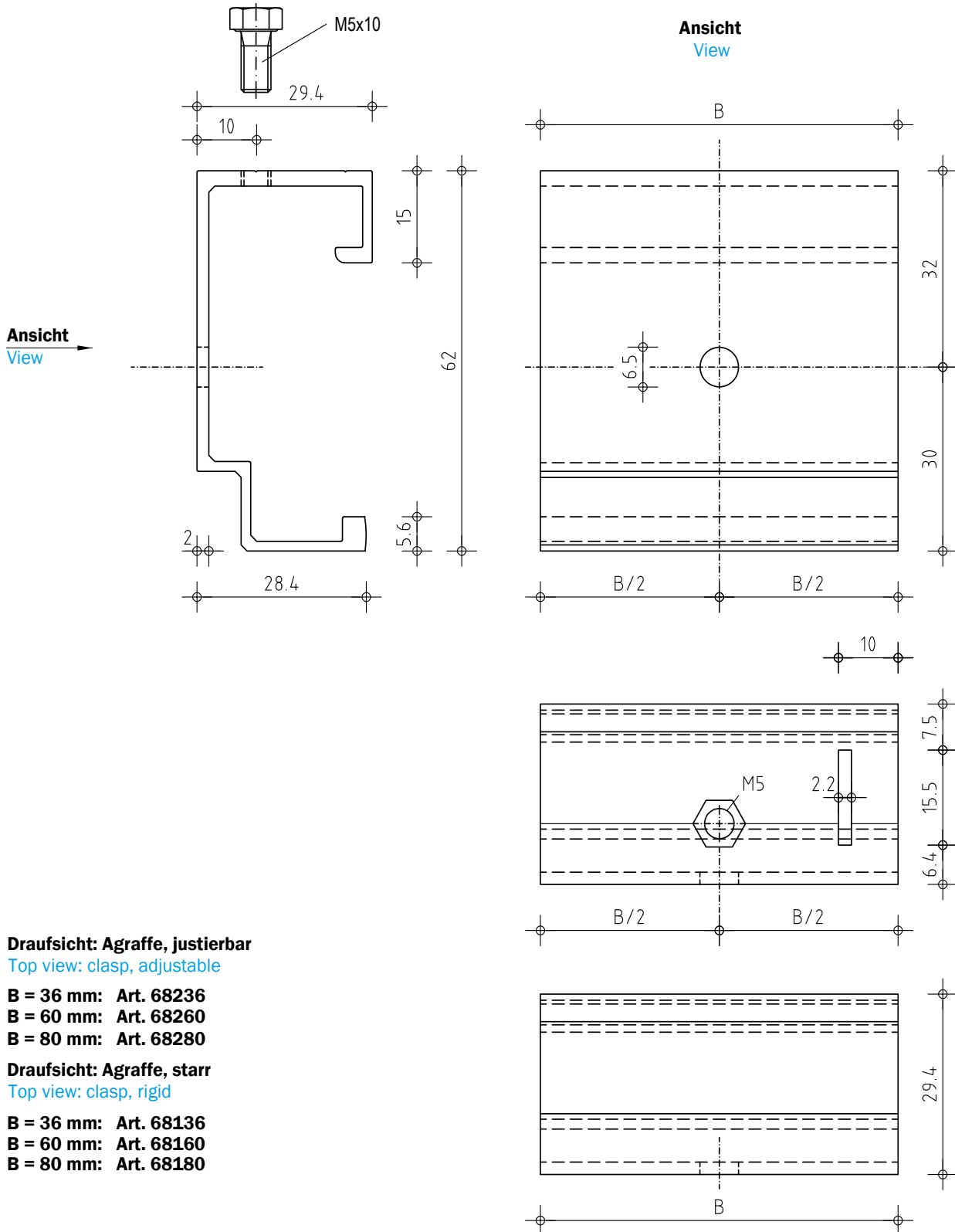


ATK 103 S20 T



Agraffe ATK 103 S z.B. für Buchtal Quadro; fischer FZP/M6

Clasp ATK 103 S e.g. for Buchtal Quadro; fischer FZP/M6



Draufsicht: Agraffe, justierbar

Top view: clasp, adjustable

B = 36 mm: Art. 68236

B = 60 mm: Art. 68260

B = 80 mm: Art. 68280

Draufsicht: Agraffe, starr

Top view: clasp, rigid

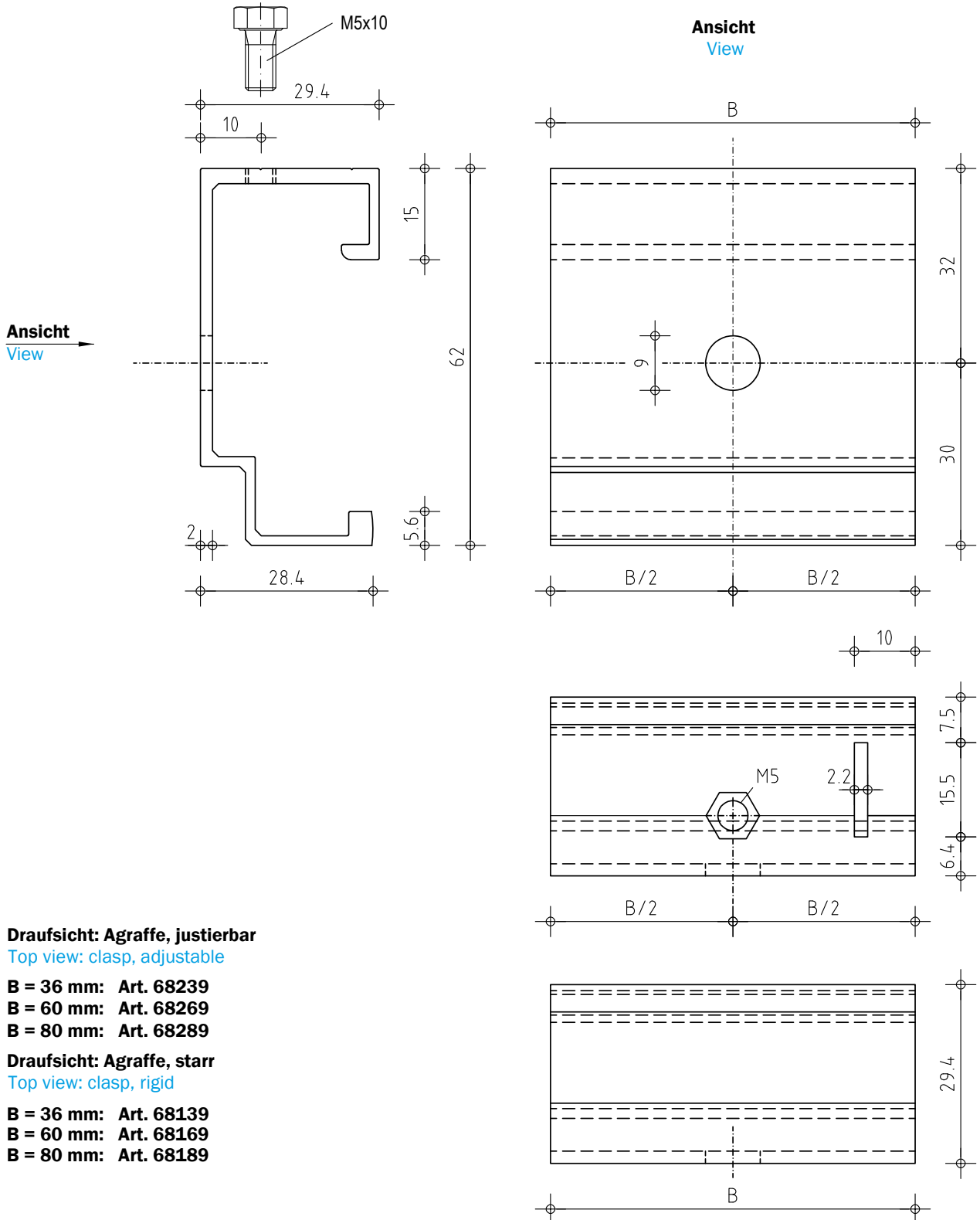
B = 36 mm: Art. 68136

B = 60 mm: Art. 68160

B = 80 mm: Art. 68180

Agraffe ATK 103 S z.B. für fischer FZP/M8; FZP-N

Clasp ATK 103 S e.g. for fischer FZP/M8; FZP-N



Draufsicht: Agraffe, justierbar

Top view: clasp, adjustable

B = 36 mm: Art. 68239

B = 60 mm: Art. 68269

B = 80 mm: Art. 68289

Draufsicht: Agraffe, starr

Top view: clasp, rigid

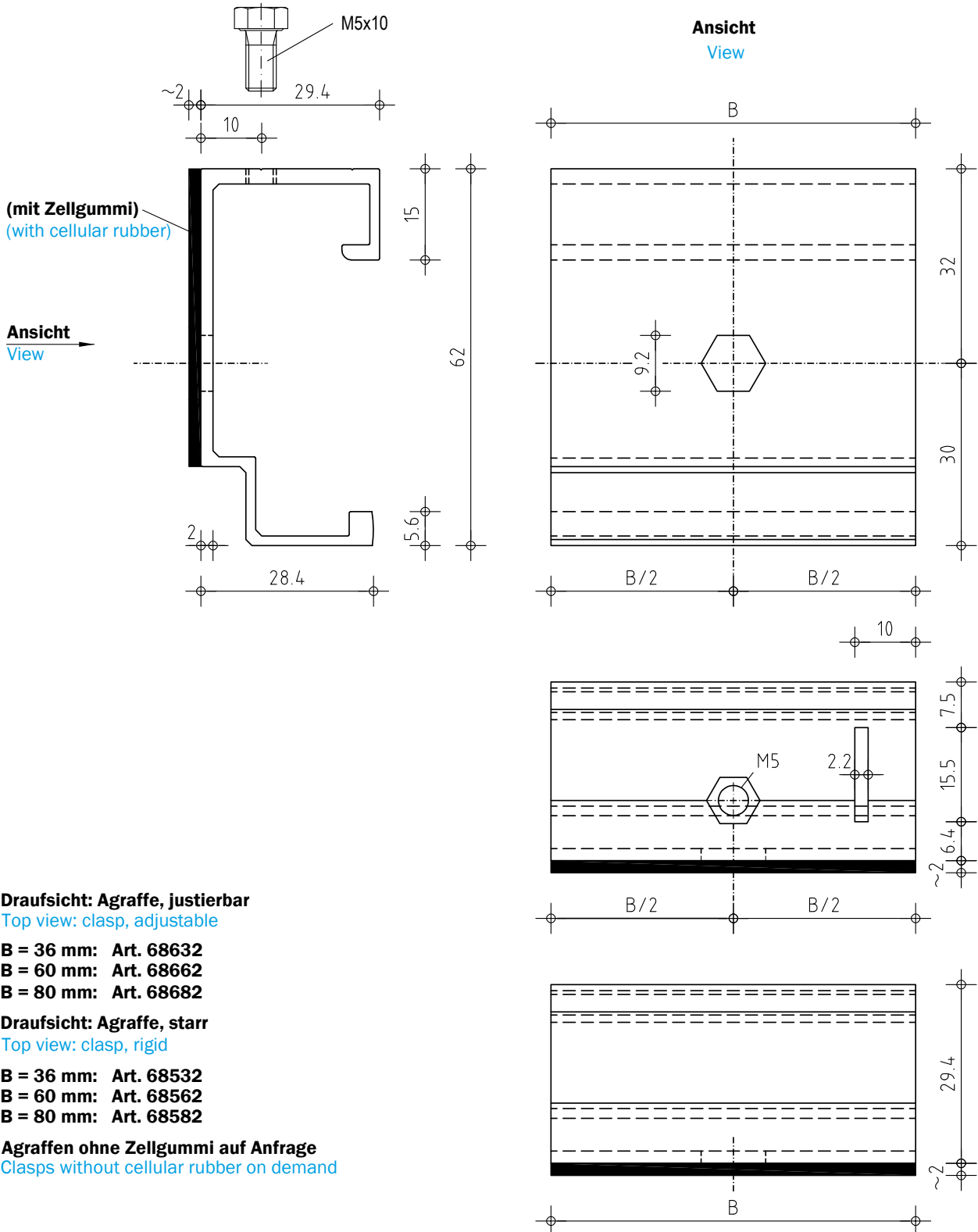
B = 36 mm: Art. 68139

B = 60 mm: Art. 68169

B = 80 mm: Art. 68189

Agraffe ATK 103 S z.B.für Durchsteckmontage 6-kant

Clasp ATK 103 S e.g. for pushthrough anchorage hexagonal



Draufsicht: Agraffe, justierbar

Top view: clasp, adjustable

B = 36 mm: Art. 68632

B = 60 mm: Art. 68662

B = 80 mm: Art. 68682

Draufsicht: Agraffe, starr

Top view: clasp, rigid

B = 36 mm: Art. 68532

B = 60 mm: Art. 68562

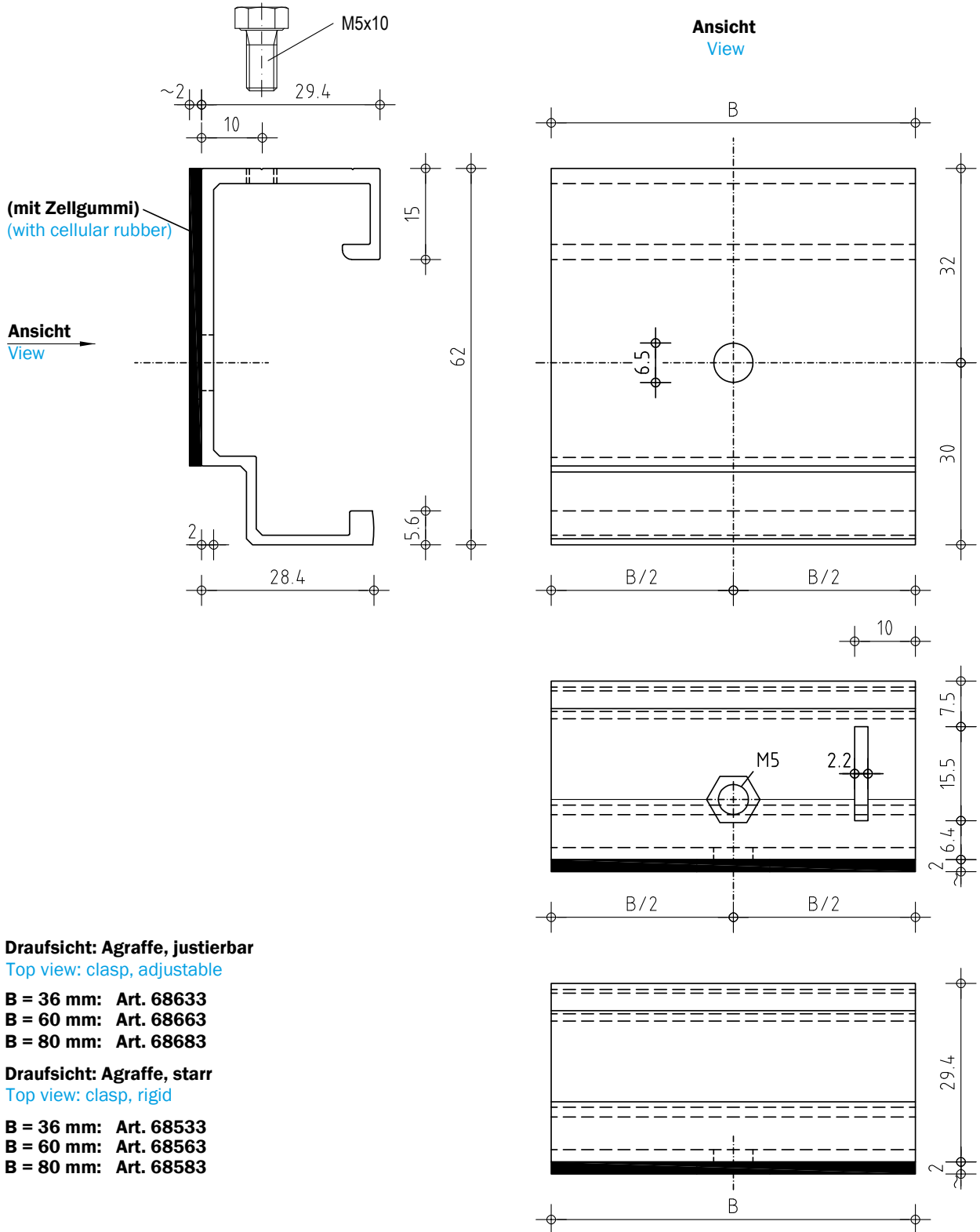
B = 80 mm: Art. 68582

Agraffen ohne Zellgummi auf Anfrage

Clasps without cellular rubber on demand

Agraffe ATK 103 S z.B. für Lithodecor / M6

Clasp ATK 103 S e.g. for Lithodecor / M6



Draufsicht: Agraffe, justierbar

Top view: clasp, adjustable

B = 36 mm: Art. 68633

B = 60 mm: Art. 68663

B = 80 mm: Art. 68683

Draufsicht: Agraffe, starr

Top view: clasp, rigid

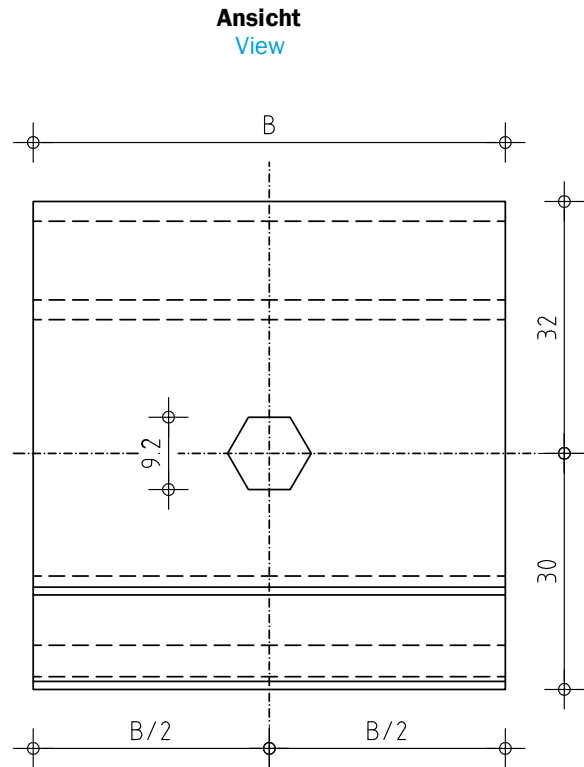
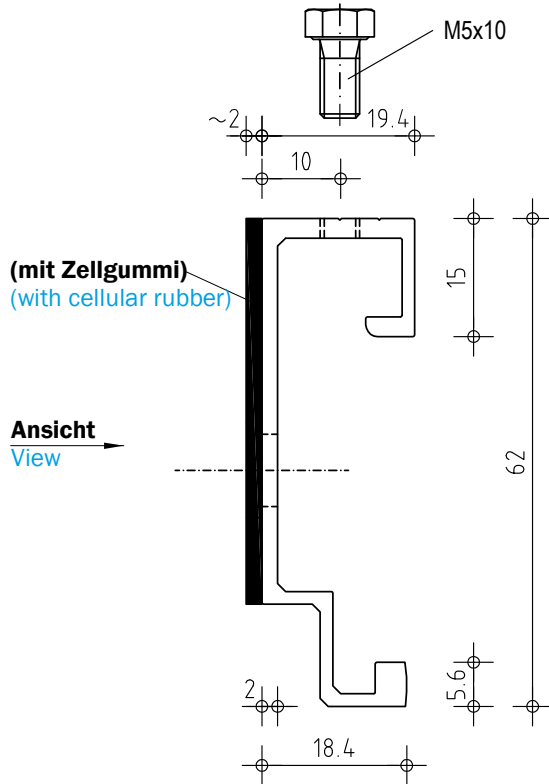
B = 36 mm: Art. 68533

B = 60 mm: Art. 68563

B = 80 mm: Art. 68583

Agraffe ATK 103 S20 z.B für Durchsteckmontage 6-kant

Clasp ATK 103 S20 e.g. for pushthrough anchorage hexagonal



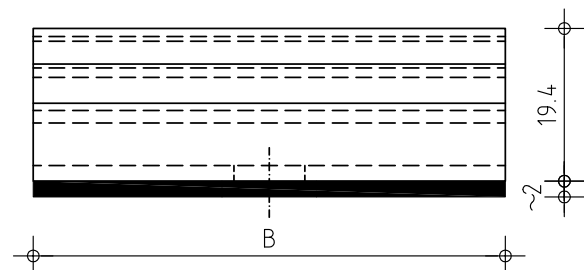
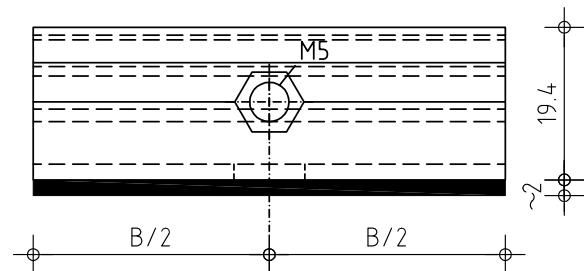
Draufsicht: Agraffe, justierbar
Top view: clasp, adjustable

- B = 36 mm: Art. 28632**
- B = 60 mm: Art. 28662**
- B = 80 mm: Art. 28682**

Draufsicht: Agraffe, starr
Top view: clasp, rigid

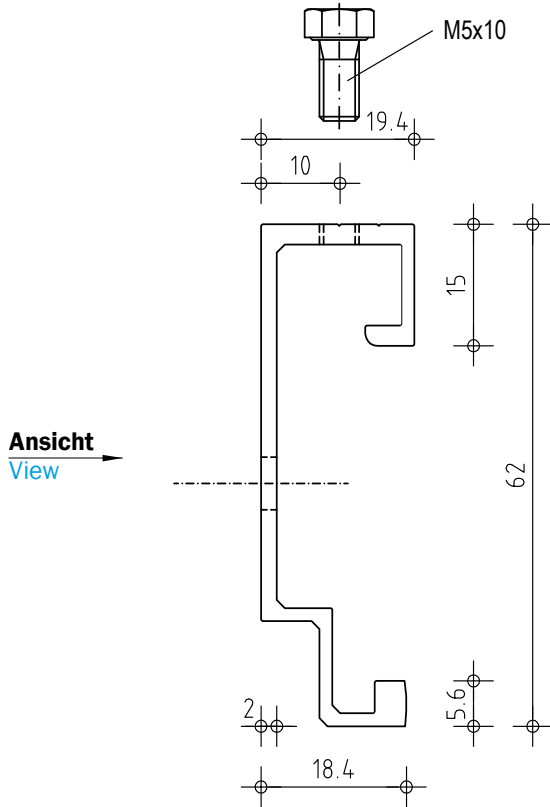
- B = 36 mm: Art. 28532**
- B = 60 mm: Art. 28562**
- B = 80 mm: Art. 28582**

Agraffen ohne Zellgummi auf Anfrage
Clasps without cellular rubber on demand

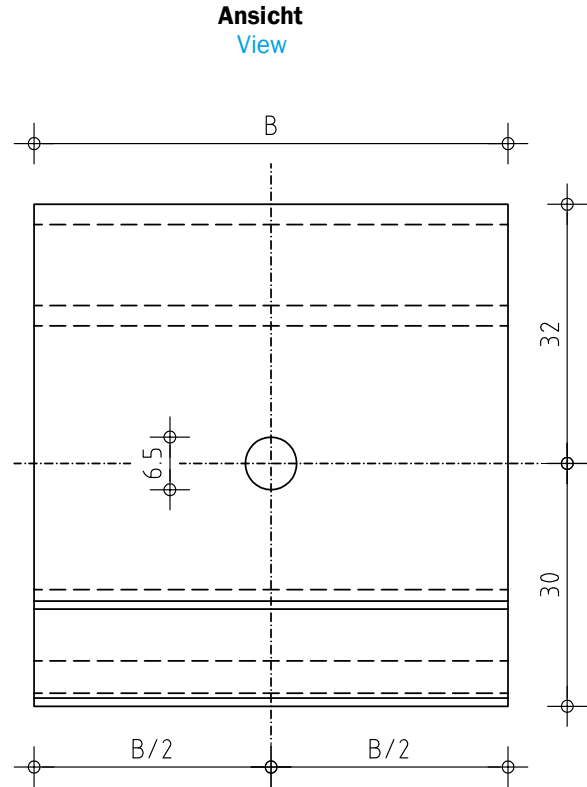


Agraffe ATK 103 S20 z.B. für kurze Anschlußgewinde M6

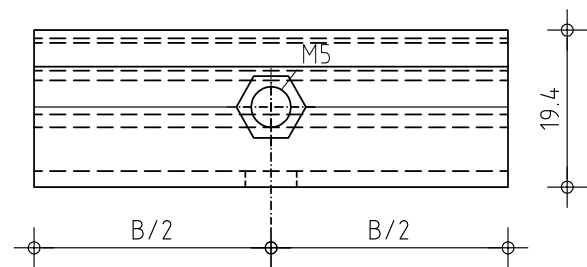
Clasp ATK 103 S20 e.g. for short threaded bolts M6



Ansicht
View



Ansicht
View



Draufsicht: Agraffe, justierbar

Top view: clasp, adjustable

B = 36 mm: Art. 28236

B = 60 mm: Art. 28260

B = 80 mm: Art. 28280

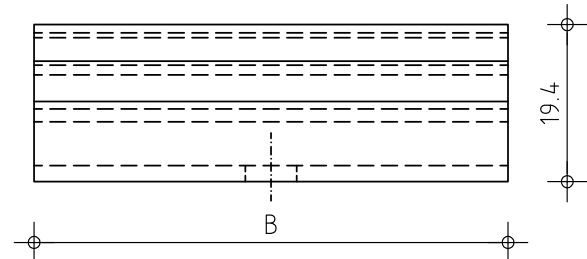
Draufsicht: Agraffe, starr

Top view: clasp, rigid

B = 36 mm: Art. 28136

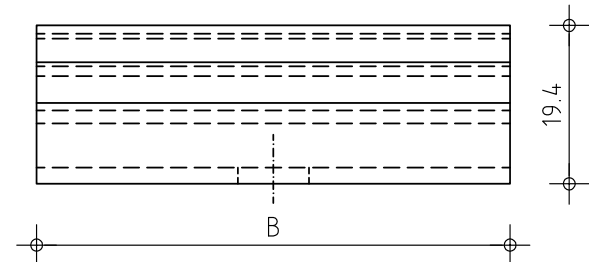
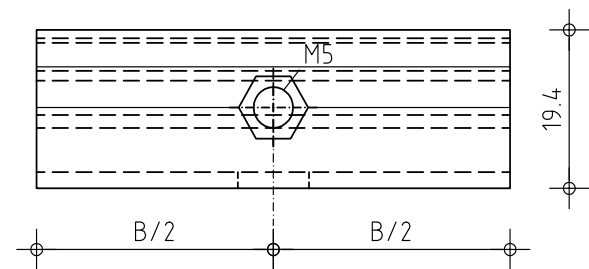
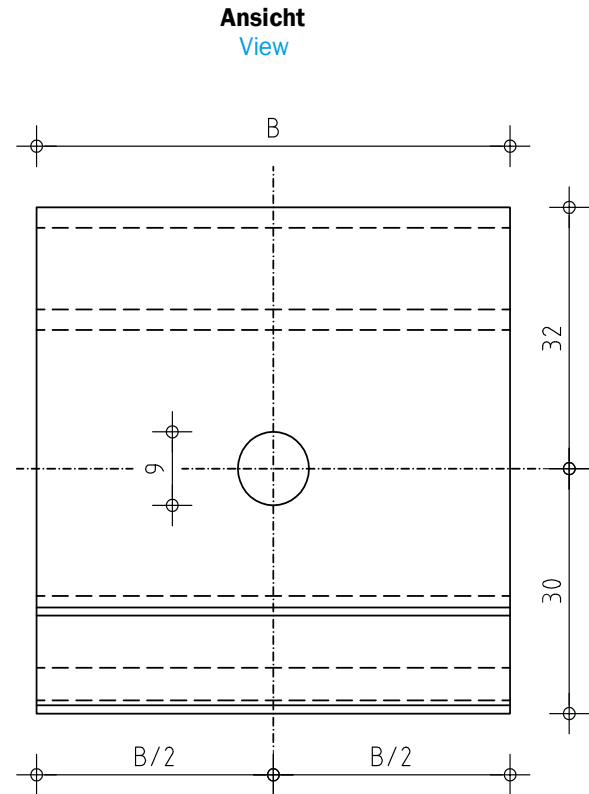
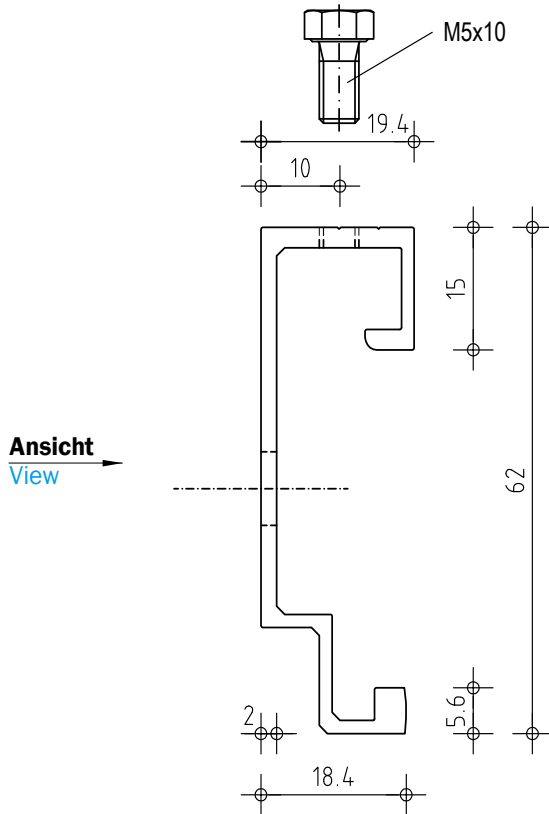
B = 60 mm: Art. 28160

B = 80 mm: Art. 28180



Agraffe ATK 103 S20 z.B. für kurze Anschlußgewinde M8

Clasp ATK 103 S20 e.g. for short threaded bolts M8



Draufsicht: Agraffe, justierbar

Top view: clasp, adjustable

B = 36 mm: Art. 28239

B = 60 mm: Art. 28269

B = 80 mm: Art. 28289

Draufsicht: Agraffe, starr

Top view: clasp, rigid

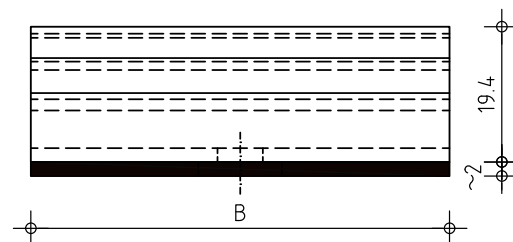
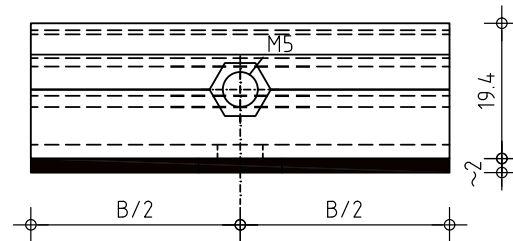
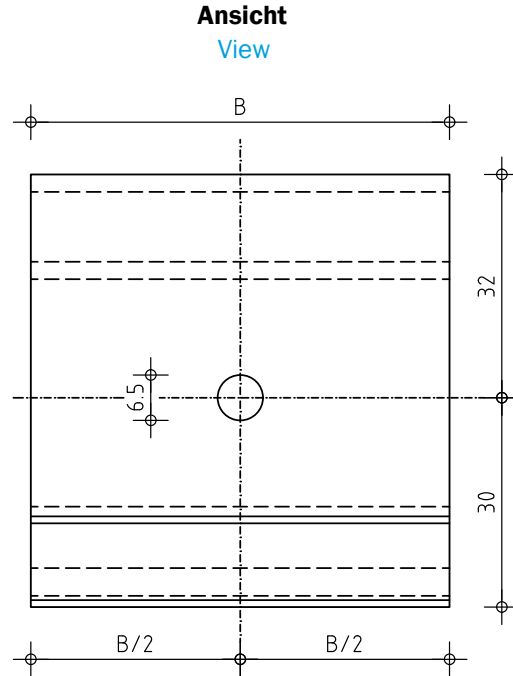
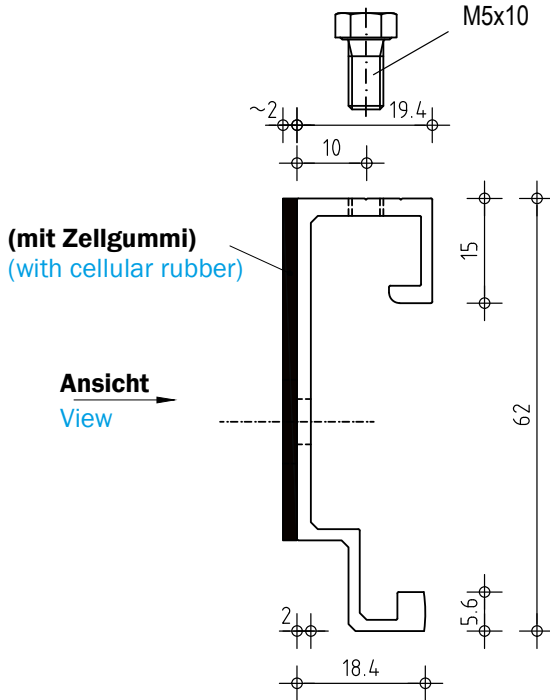
B = 36 mm: Art. 28139

B = 60 mm: Art. 28169

B = 80 mm: Art. 28189

Agraffe ATK 103 S20 z.B. für Lithodecor / M6

Clasp ATK 103 S20 e.g. for Lithodecor / M6



Draufsicht: Agraffe, justierbar

Top view: clasp, adjustable

B = 36 mm: Art. 28633

B = 60 mm: Art. 28663

B = 80 mm: Art. 28683

Draufsicht: Agraffe, starr

Top view: clasp, rigid

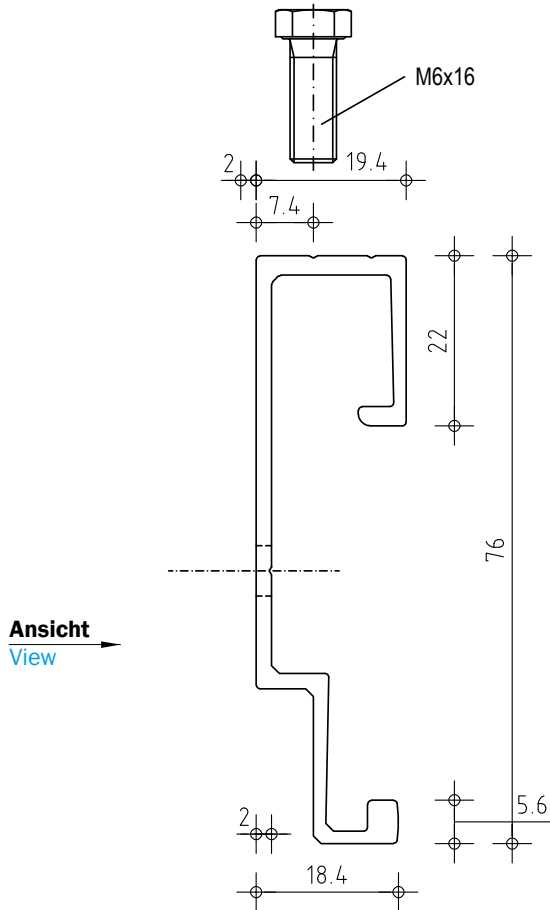
B = 36 mm: Art. 28533

B = 60 mm: Art. 28563

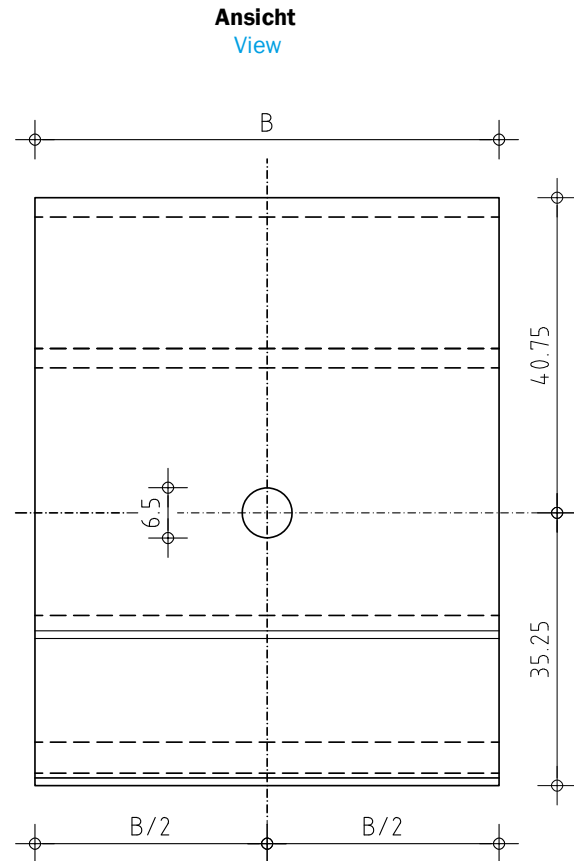
B = 80 mm: Art. 28583

Agraffe ATK 103 S20 T z.B. für kurze Anschlußgewinde M6

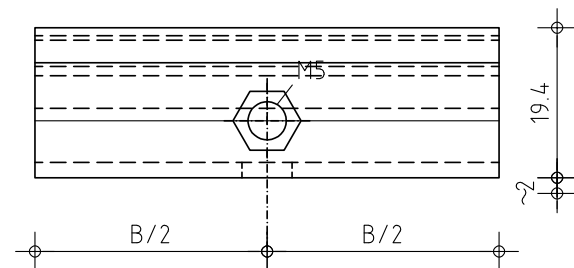
Clasp ATK 103 S20 T e.g. for short threaded bolts M6



Ansicht
View



Ansicht
View



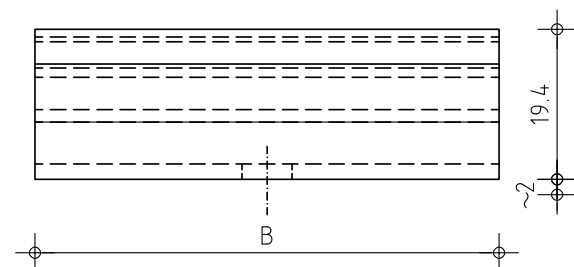
Draufsicht: Agraffe, justierbar
Top view: clasp, adjustable

B = 36 mm: Art. 18236
B = 60 mm: Art. 18260
B = 80 mm: Art. 18280

Draufsicht: Agraffe, starr
Top view: clasp, rigid

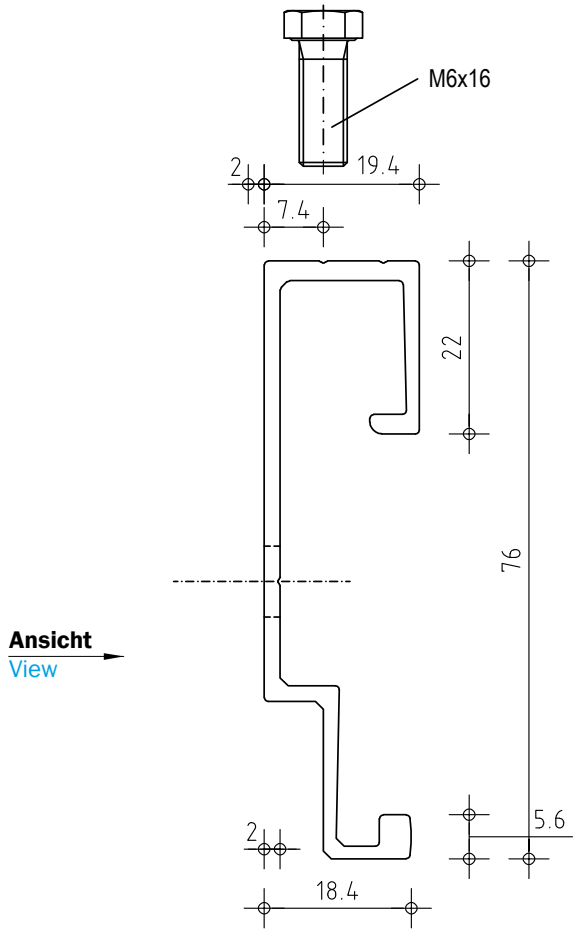
B = 36 mm: Art. 18136
B = 60 mm: Art. 18160
B = 80 mm: Art. 18180

Agraffen ohne Zellgummi auf Anfrage
Clasps without cellular rubber on demand

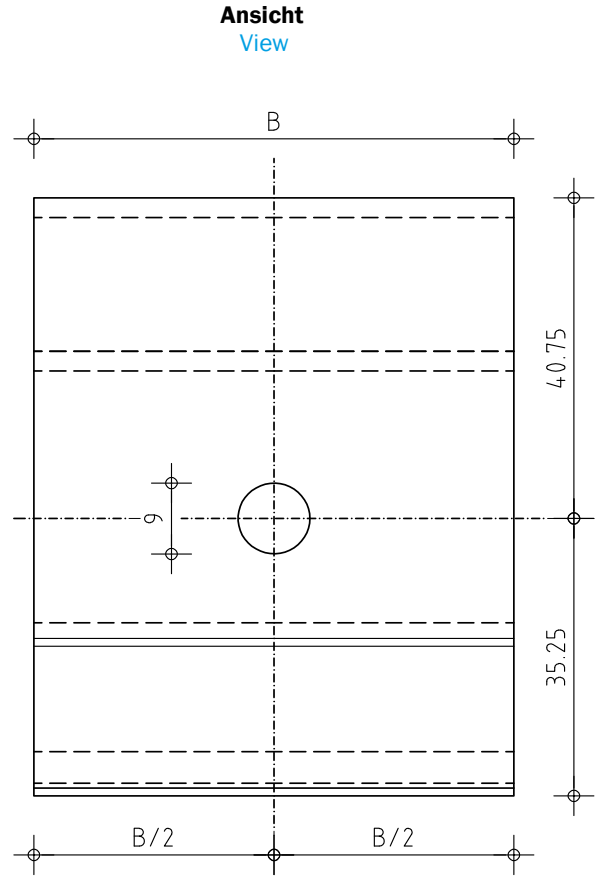


Agraffe ATK 103 S20 T z.B. für kurze Anschlußgewinde M8

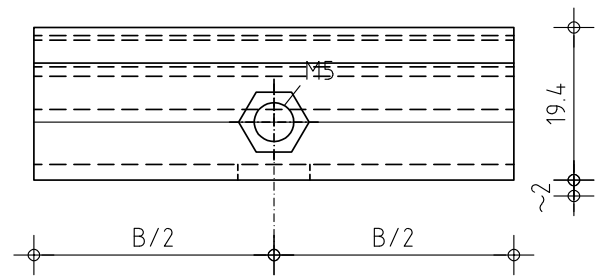
Clasp ATK 103 S20 T e.g. for short threaded bolts M8



Ansicht
View



Ansicht
View



Draufsicht: Agraffe, justierbar

Top view: clasp, adjustable

B = 36 mm: Art. 18239

B = 60 mm: Art. 18269

B = 80 mm: Art. 18289

Draufsicht: Agraffe, starr

Top view: clasp, rigid

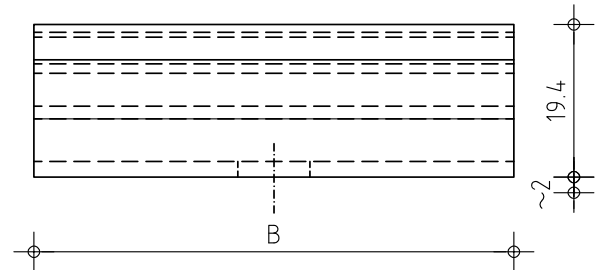
B = 36 mm: Art. 18139

B = 60 mm: Art. 18169

B = 80 mm: Art. 18189

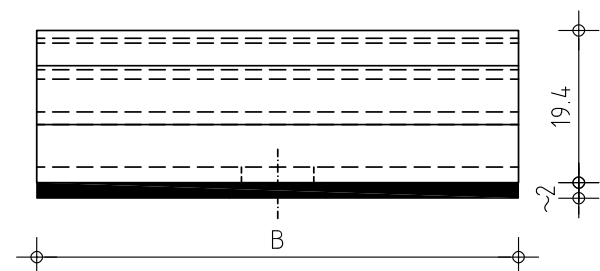
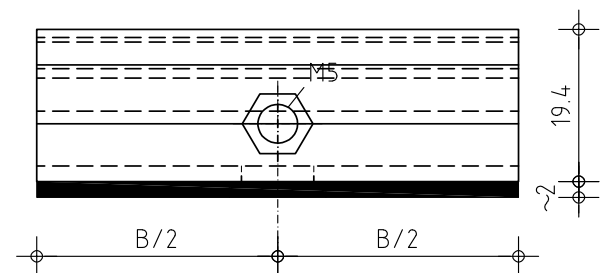
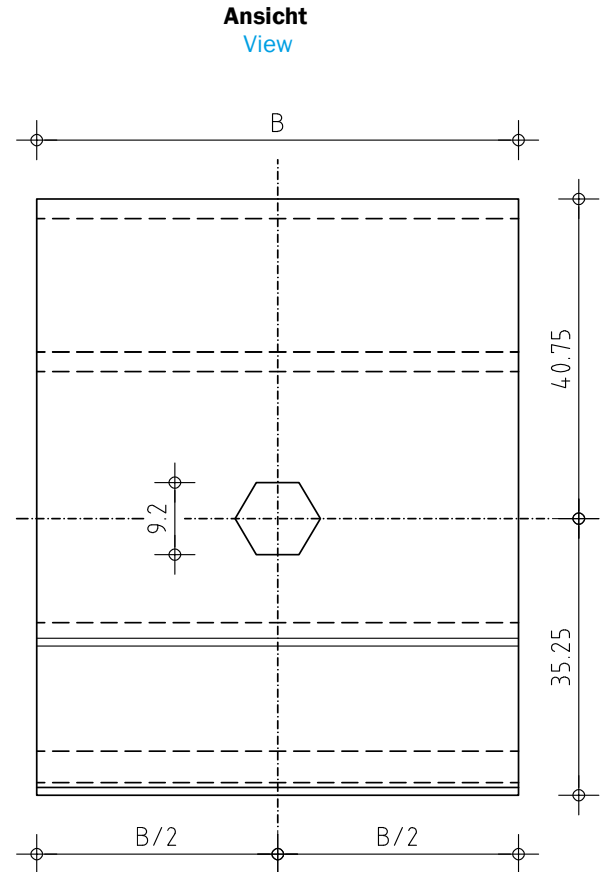
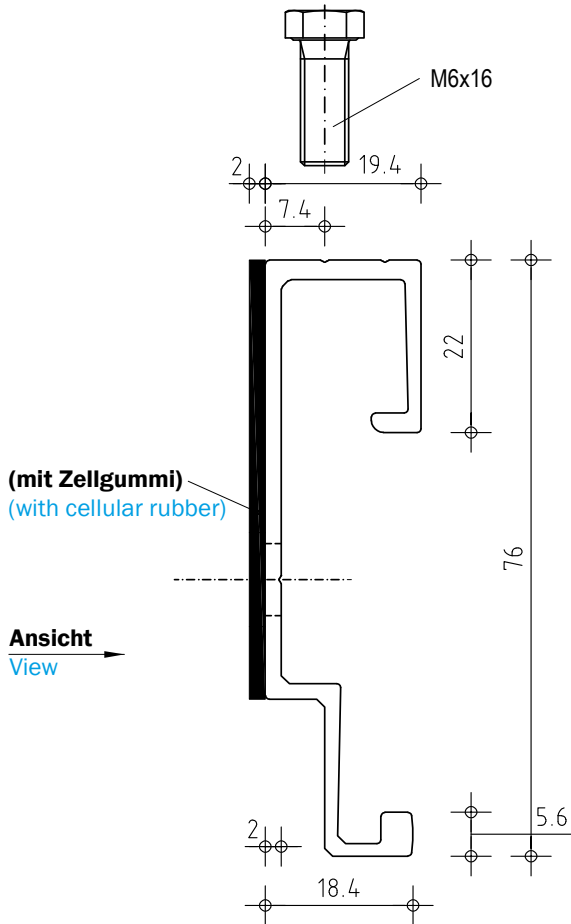
Agraffen ohne Zellgummi auf Anfrage

Clasps without cellular rubber on demand



Agraffe ATK 103 S20 T z.B für Durchsteckmontage 6-kant

Clasp ATK 103 S20 T e.g. for pushthrough anchorage hexagonal



Draufsicht: Agraffe, justierbar
Top view: clasp, adjustable

B = 36 mm: Art. 18632
B = 60 mm: Art. 18662
B = 80 mm: Art. 18682

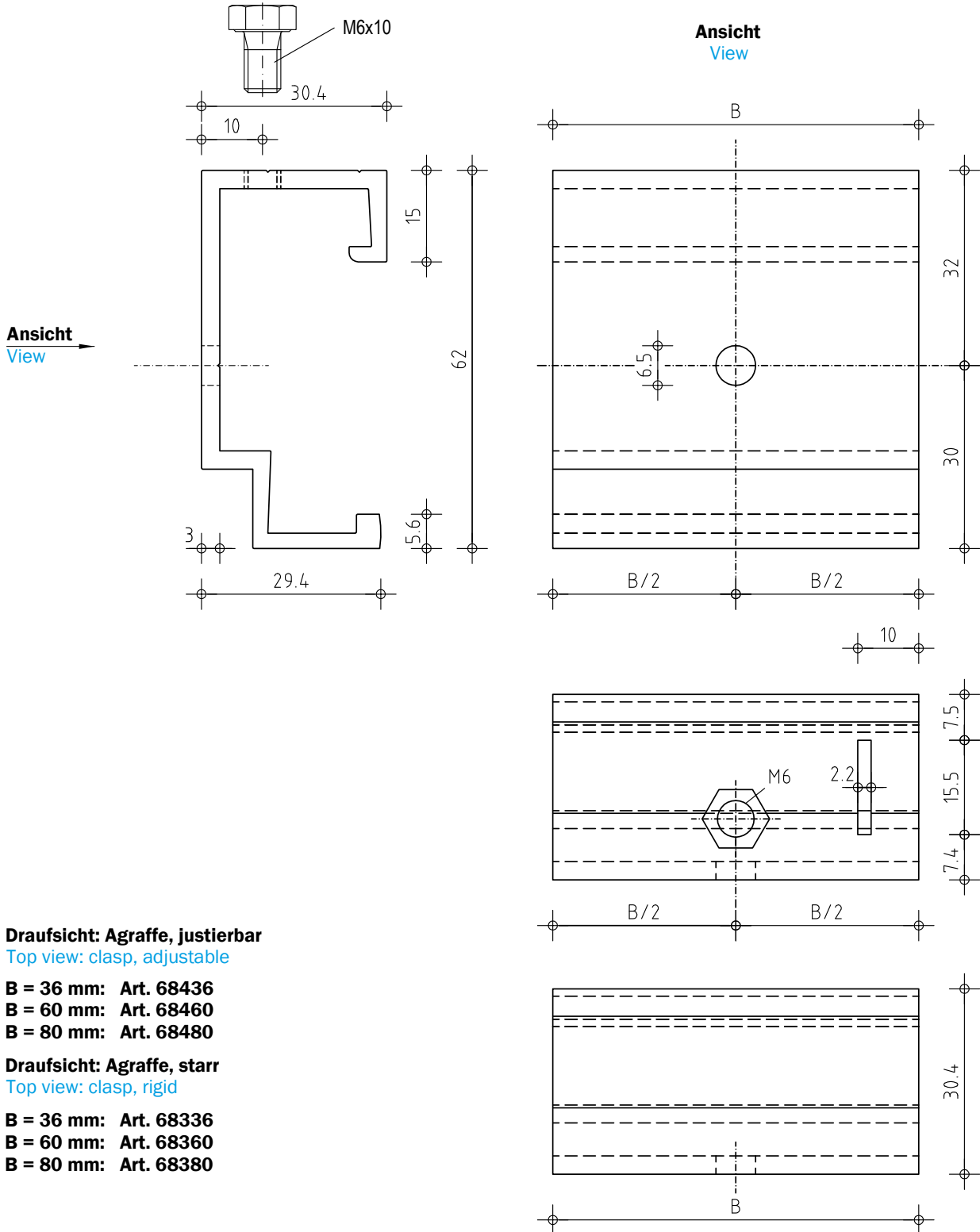
Draufsicht: Agraffe, starr
Top view: clasp, rigid

B = 36 mm: Art. 18532
B = 60 mm: Art. 18562
B = 80 mm: Art. 18582

Agraffen ohne Zellgummi auf Anfrage
Clasps without cellular rubber on demand

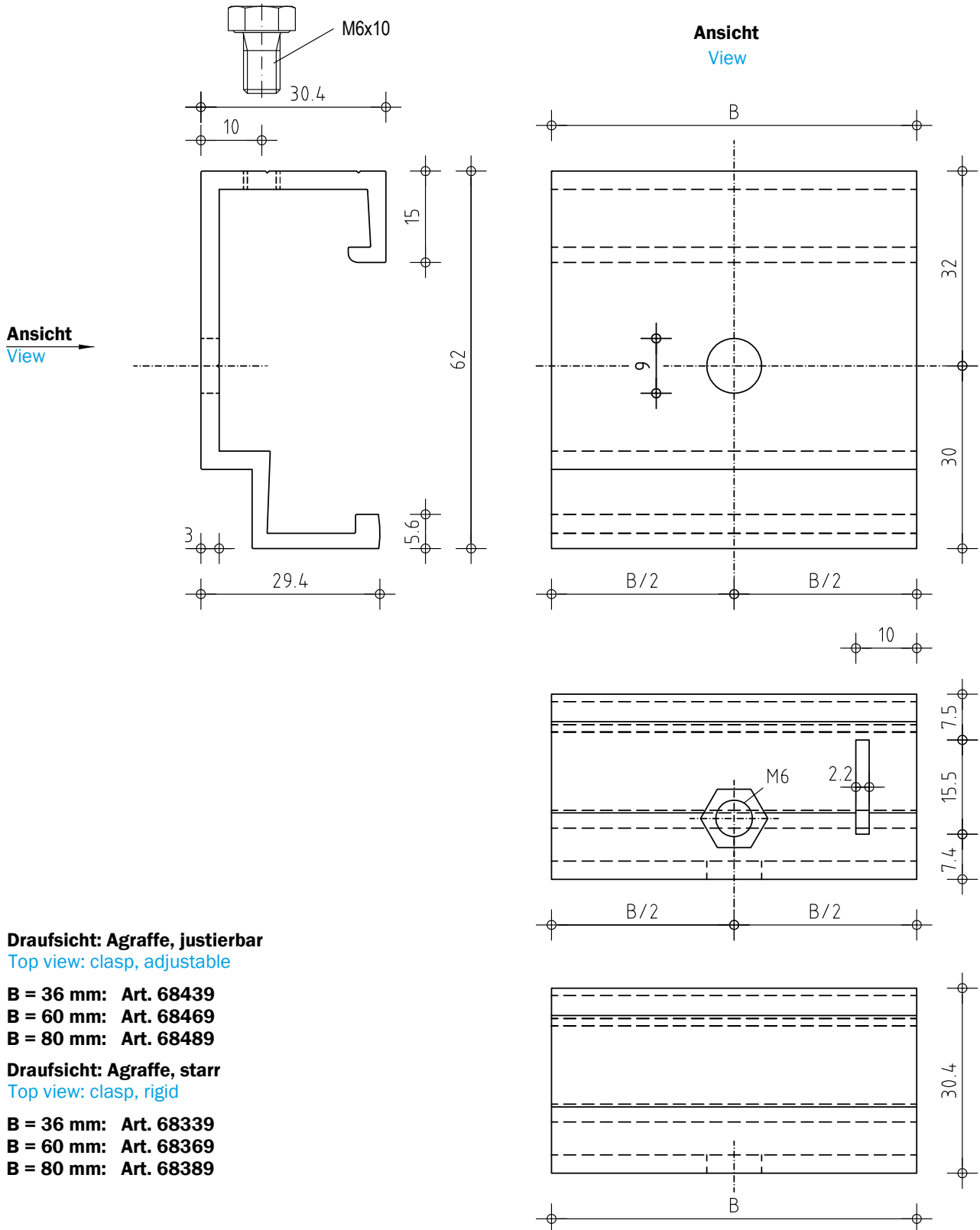
Agraffe ATK 103 P z.B. für Buchtal Quadro; fischer FZP/M6

Clasp ATK 103 P e.g. for Buchtal Quadro; fischer FZP/M6



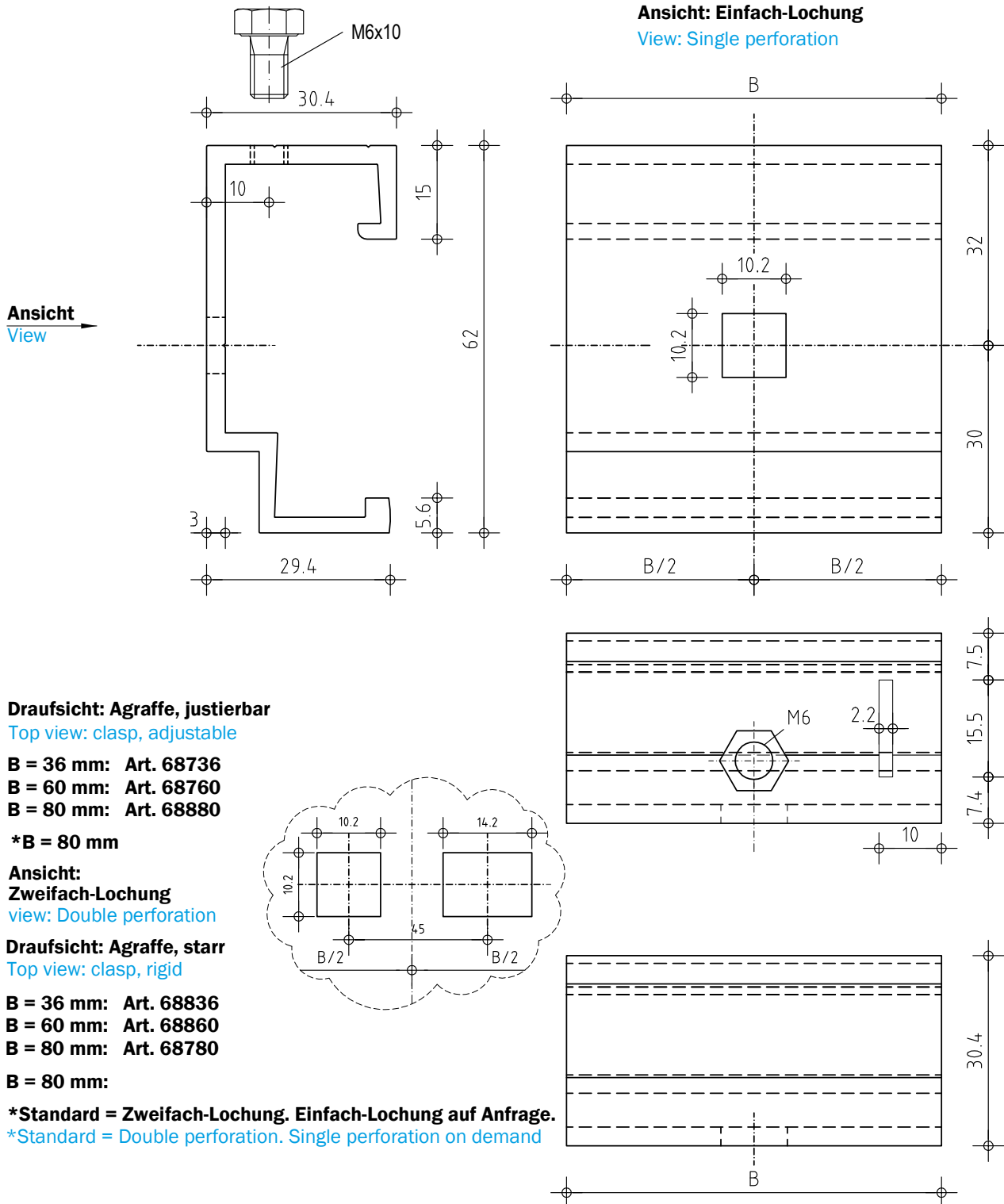
Agraffe ATK 103 P z.B. für fischer FZP/M8; FZP-N

Clasp ATK 103 P e.g. for fischer FZP/M8;FZP-N



Agraffe ATK 103 P z.B. für Eternit 4-kant

Clasp ATK 103 P e.g. for Eternit square



Draufsicht: Agraffe, justierbar

Top view: clasp, adjustable

B = 36 mm: Art. 68736

B = 60 mm: Art. 68760

B = 80 mm: Art. 68880

***B = 80 mm**

Ansicht:

Zweifach-Lochung

view: Double perforation

Draufsicht: Agraffe, starr

Top view: clasp, rigid

B = 36 mm: Art. 68836

B = 60 mm: Art. 68860

B = 80 mm: Art. 68780

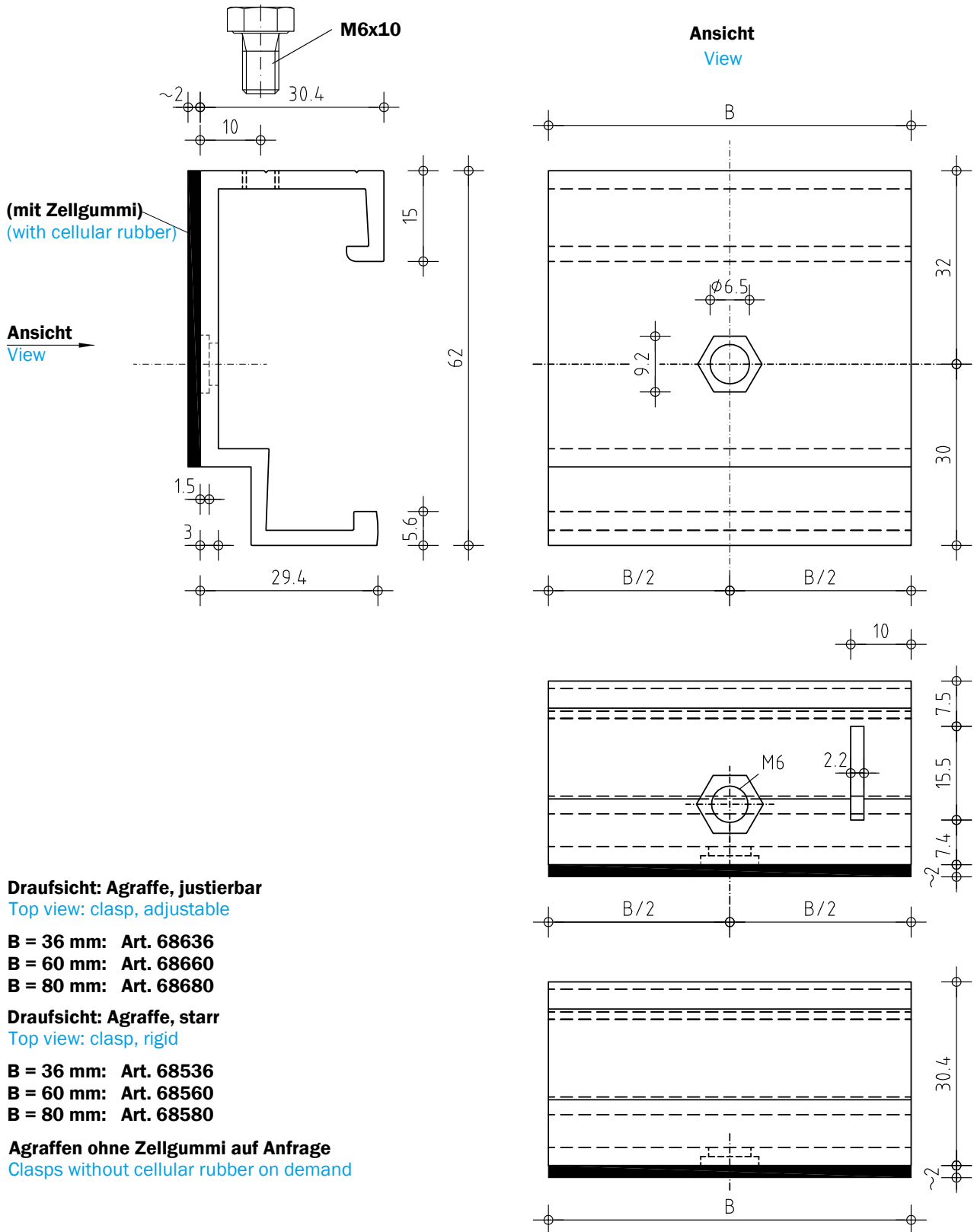
B = 80 mm:

***Standard = Zweifach-Lochung. Einfach-Lochung auf Anfrage.**

***Standard = Double perforation. Single perforation on demand**

Agraffe ATK 103 P z.B. für Keil 6-kant

Clasp ATK 103 P e.g. for Keil hexagonal



Draufsicht: Agraffe, justierbar

Top view: clasp, adjustable

B = 36 mm: Art. 68636

B = 60 mm: Art. 68660

B = 80 mm: Art. 68680

Draufsicht: Agraffe, starr

Top view: clasp, rigid

B = 36 mm: Art. 68536

B = 60 mm: Art. 68560

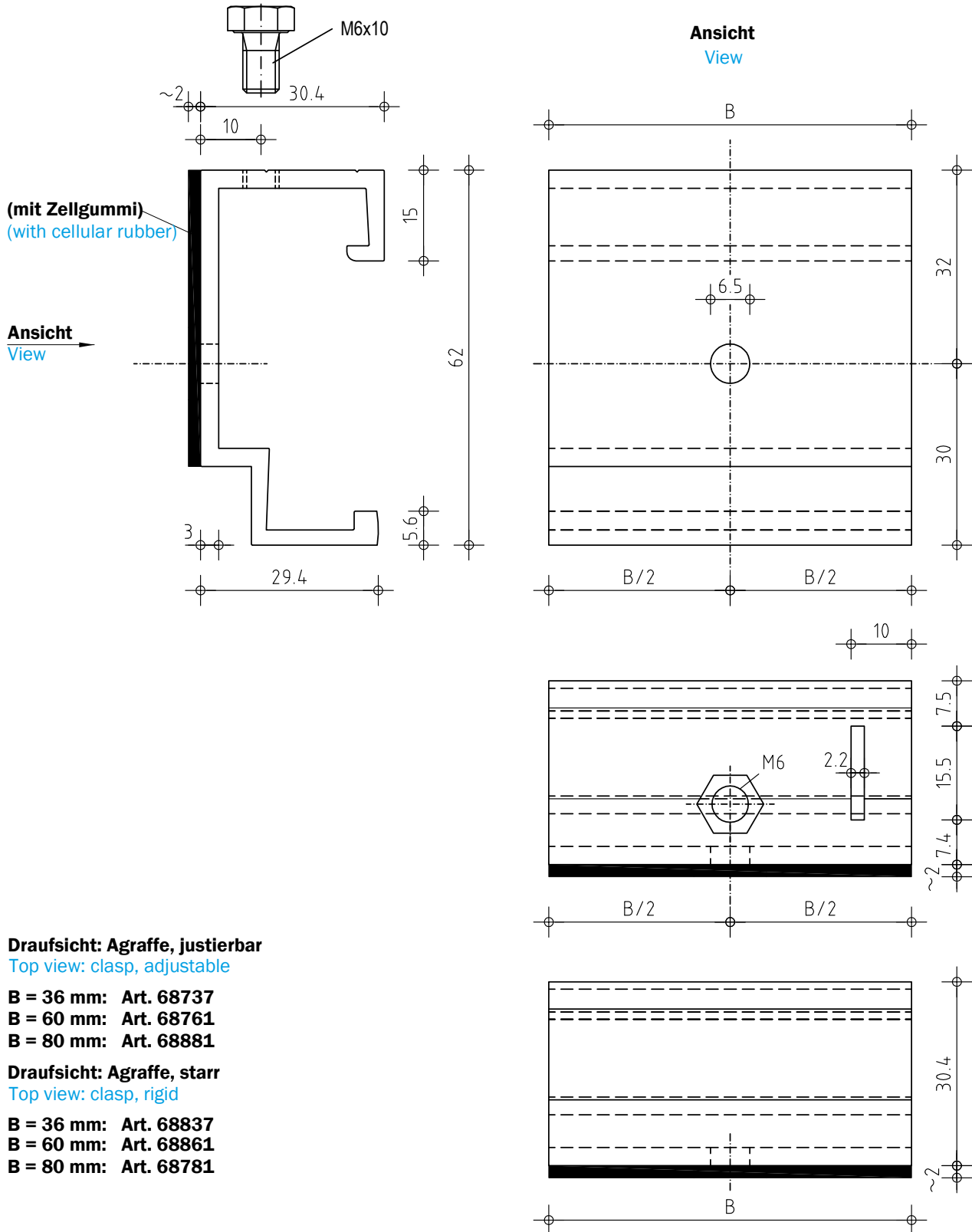
B = 80 mm: Art. 68580

Agraffen ohne Zellgummi auf Anfrage

Clasps without cellular rubber on demand

Agraffe ATK 103 P z.B. für Lithodecor / M6

Clasp ATK 103 P e.g. for Lithodecor / M6



Draufsicht: Agraffe, justierbar

Top view: clasp, adjustable

B = 36 mm: Art. 68737

B = 60 mm: Art. 68761

B = 80 mm: Art. 68881

Draufsicht: Agraffe, starr

Top view: clasp, rigid

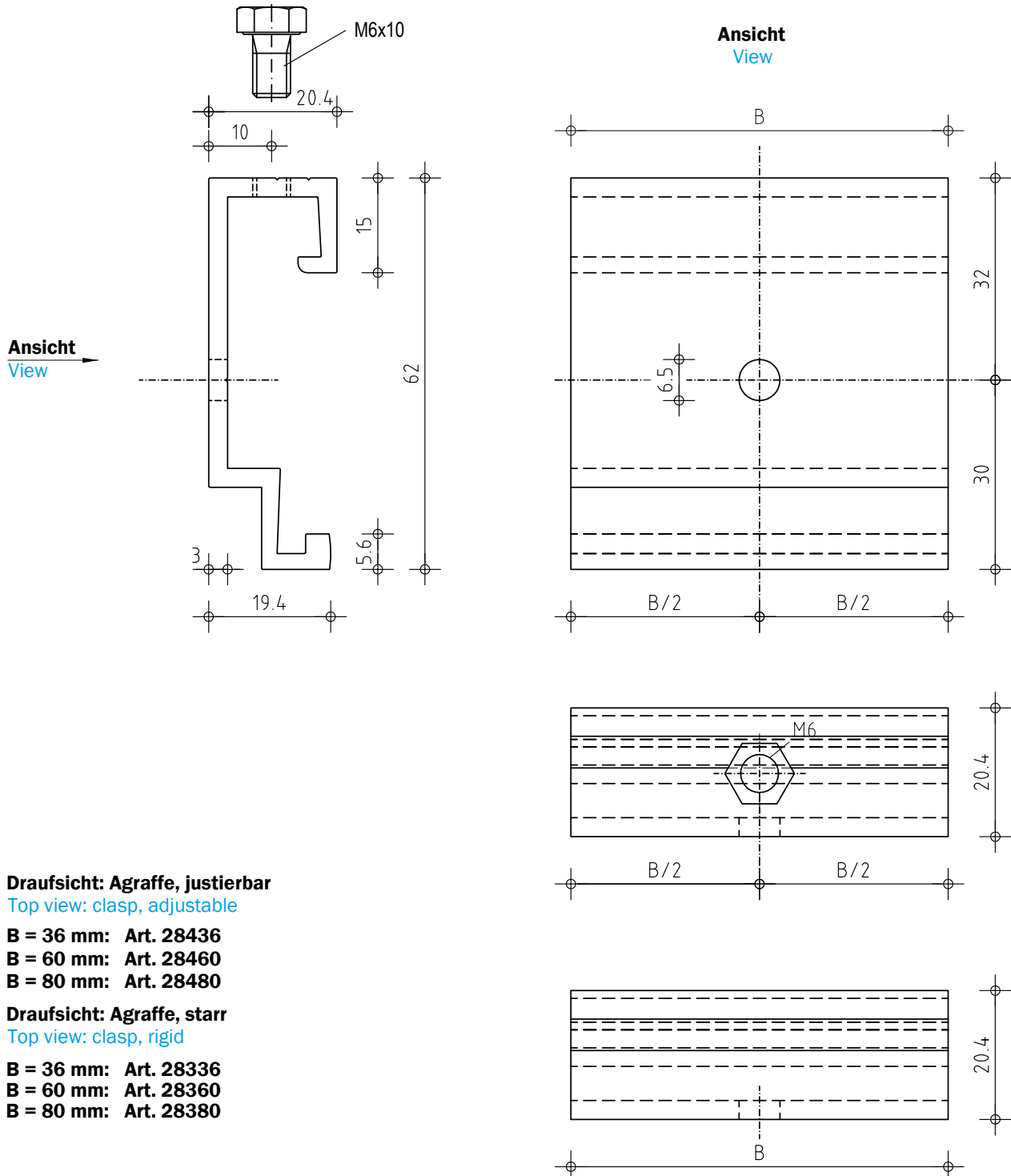
B = 36 mm: Art. 68837

B = 60 mm: Art. 68861

B = 80 mm: Art. 68781

Agraffe ATK 103 P20 z.B. für kurze Anschlußgewinde M6

Clasp ATK 103 P20 e.g. for short threaded bolts M6



Draufsicht: Agraffe, justierbar

Top view: clasp, adjustable

B = 36 mm: Art. 28436

B = 60 mm: Art. 28460

B = 80 mm: Art. 28480

Draufsicht: Agraffe, starr

Top view: clasp, rigid

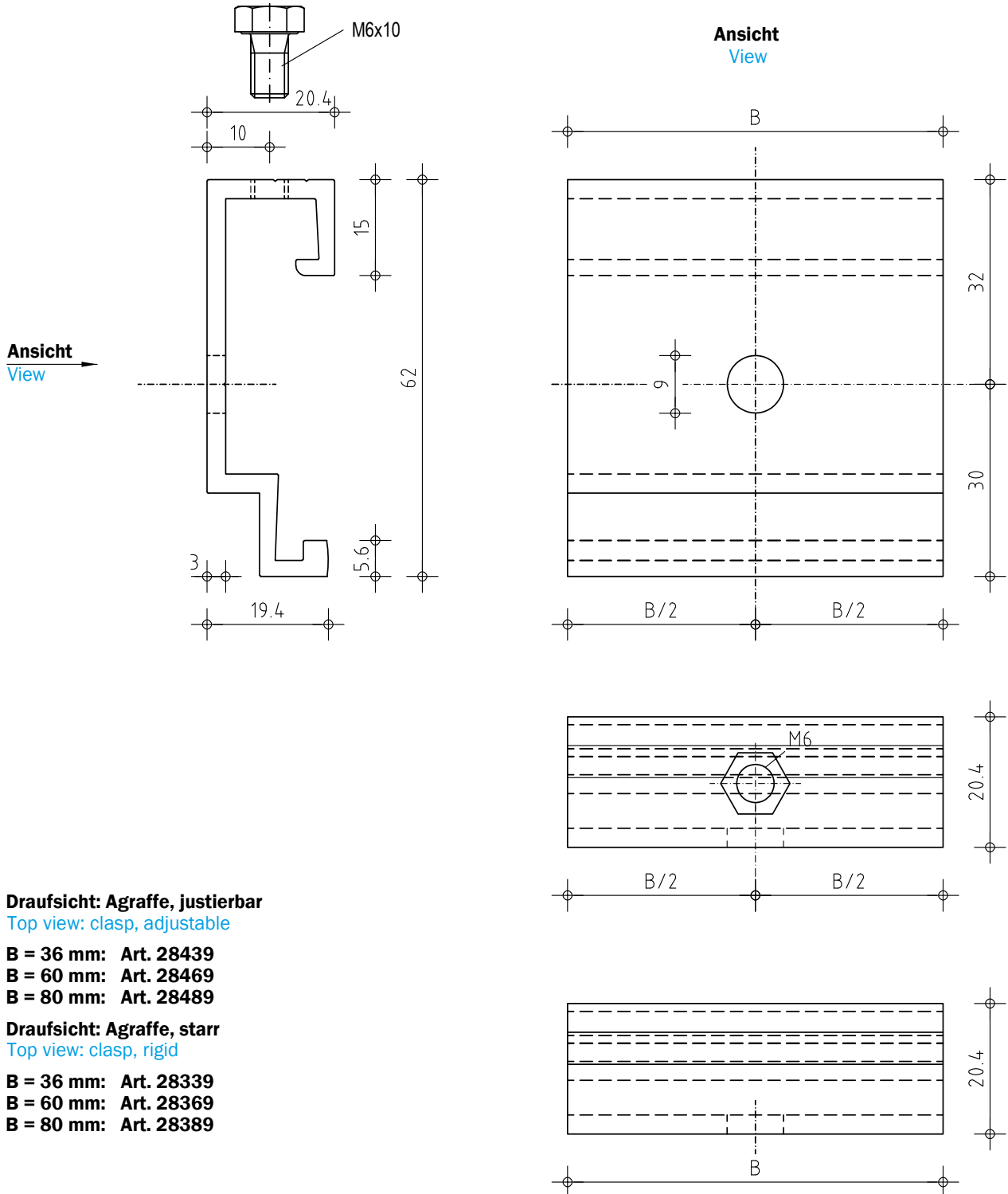
B = 36 mm: Art. 28336

B = 60 mm: Art. 28360

B = 80 mm: Art. 28380

Agraffe ATK 103 P20 z.B. für kurze Anschlußgewinde M8

Clasp ATK 103 P20 e.g. for short threaded bolts M8



Draufsicht: Agraffe, justierbar

Top view: clasp, adjustable

B = 36 mm: Art. 28439

B = 60 mm: Art. 28469

B = 80 mm: Art. 28489

Draufsicht: Agraffe, starr

Top view: clasp, rigid

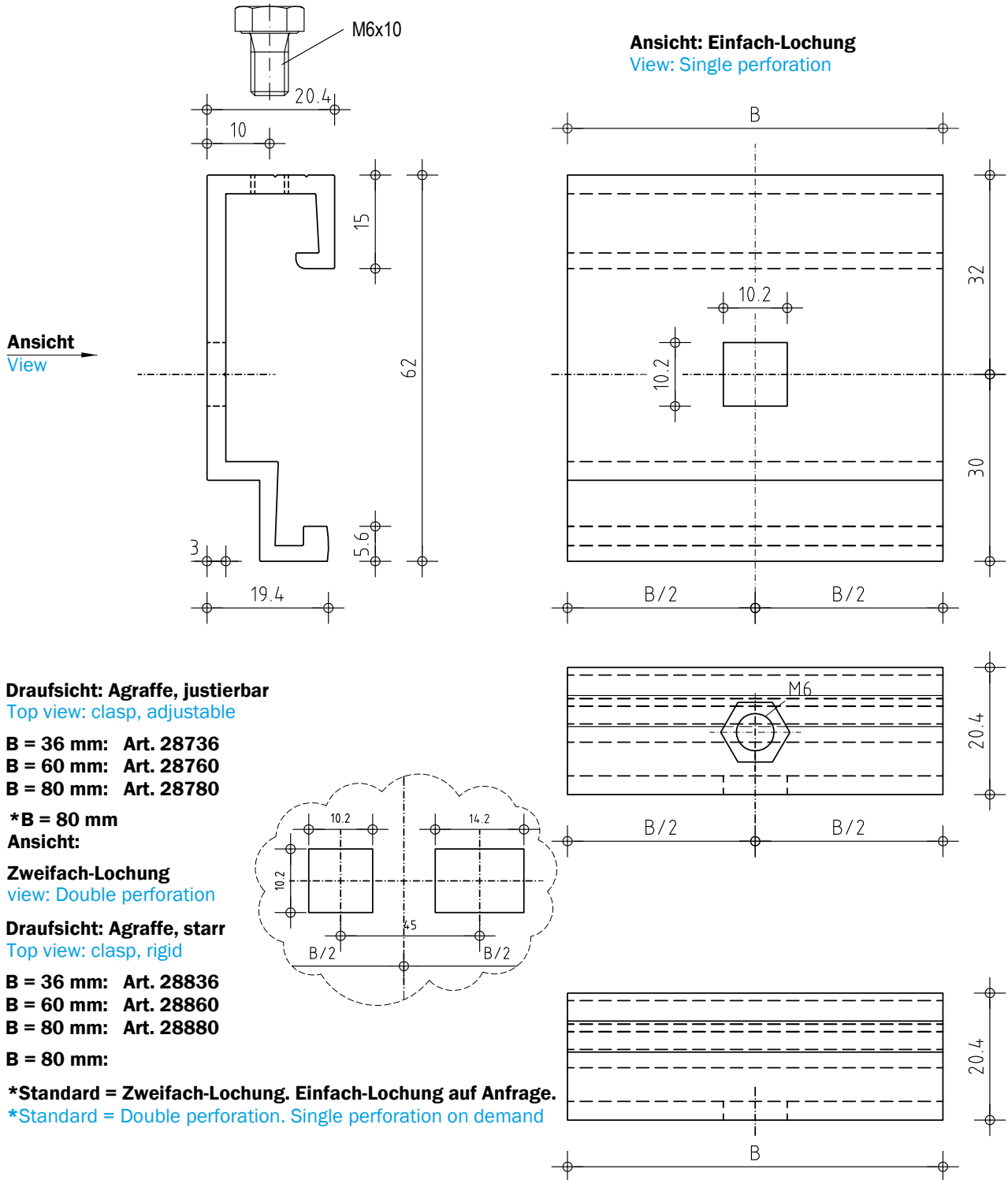
B = 36 mm: Art. 28339

B = 60 mm: Art. 28369

B = 80 mm: Art. 28389

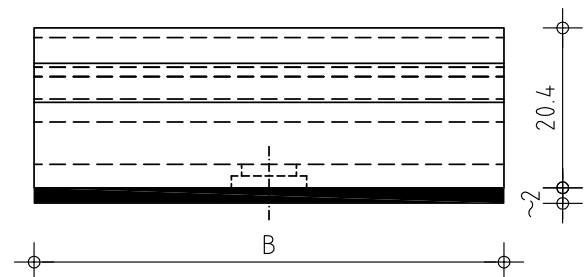
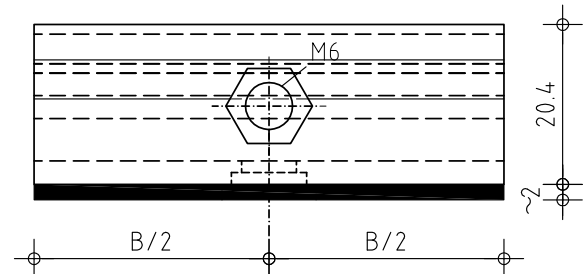
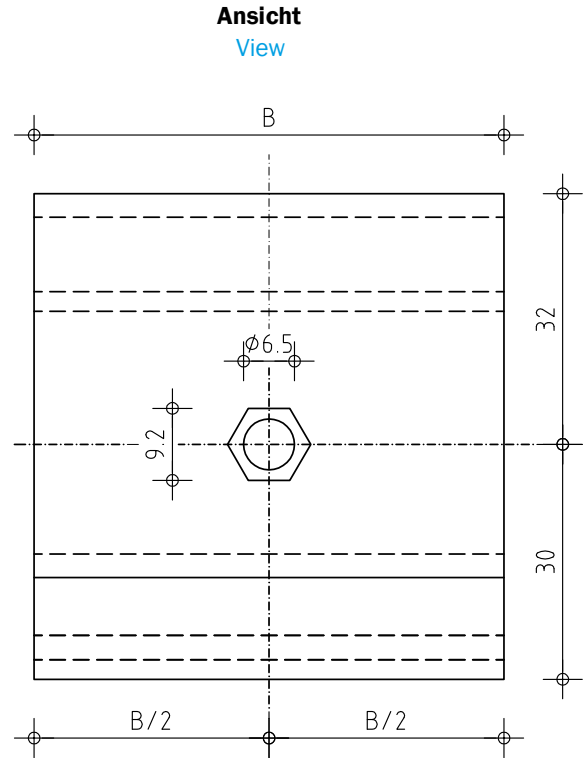
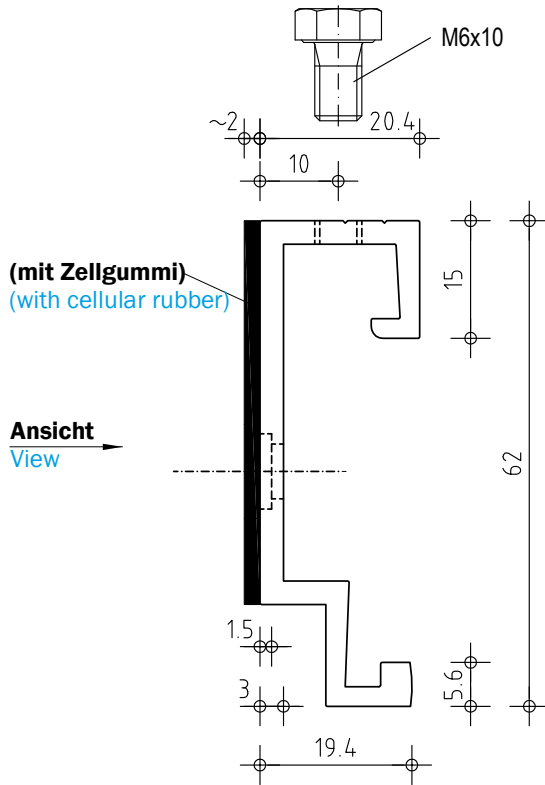
Agraffe ATK 103 P20 z.B. für Eternit 4-kant

Clasp ATK 103 P20 e.g. for Eternit square



Agraffe ATK 103 P20 z.B. für Keil 6-kant

Clasp ATK 103 P20 e.g. for Keil hexagonal



Draufsicht: Agraffe, justierbar
Top view: clasp, adjustable

- B = 36 mm: Art. 28636**
- B = 60 mm: Art. 28660**
- B = 80 mm: Art. 28680**

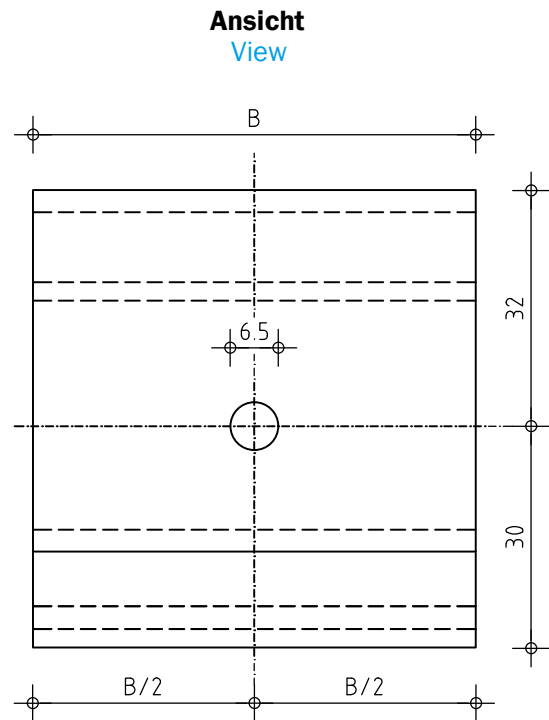
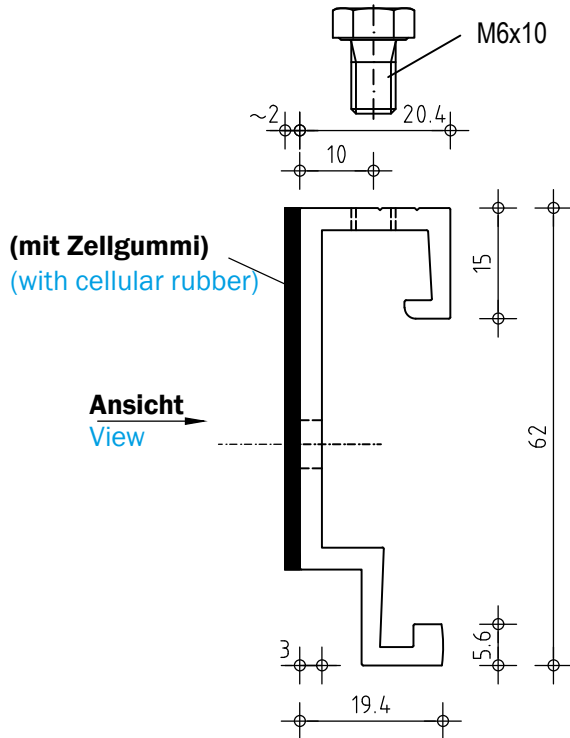
Draufsicht: Agraffe, starr
Top view: clasp, rigid

- B = 36 mm: Art. 28536**
- B = 60 mm: Art. 28560**
- B = 80 mm: Art. 28580**

Agraffen ohne Zellgummi auf Anfrage
Clasps without cellular rubber on demand

Agraffe ATK 103 P20 z.B. für Lithodecor / M6

Clasp ATK 103 P20 e.g. for Lithodecor / M6



Draufsicht: Agraffe, justierbar

Top view: clasp, adjustable

B = 36 mm: Art. 28737

B = 60 mm: Art. 28761

B = 80 mm: Art. 28781

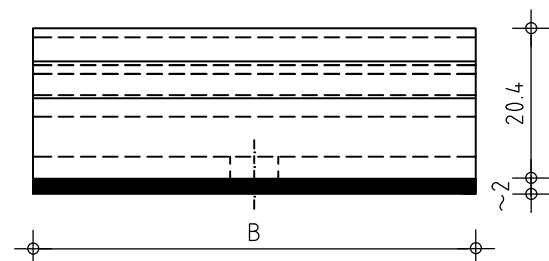
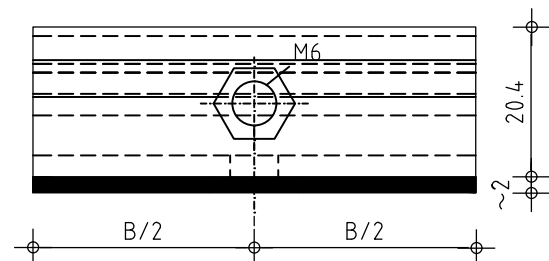
Draufsicht: Agraffe, starr

Top view: clasp, rigid

B = 36 mm: Art. 28837

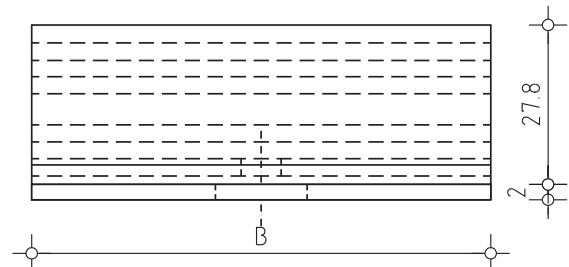
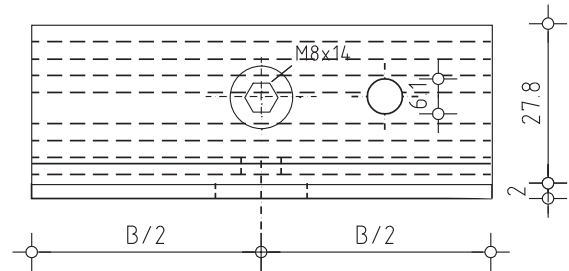
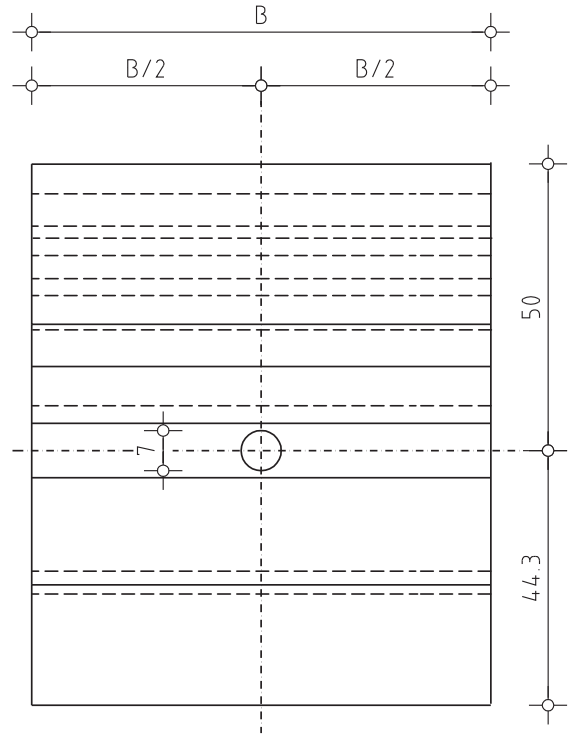
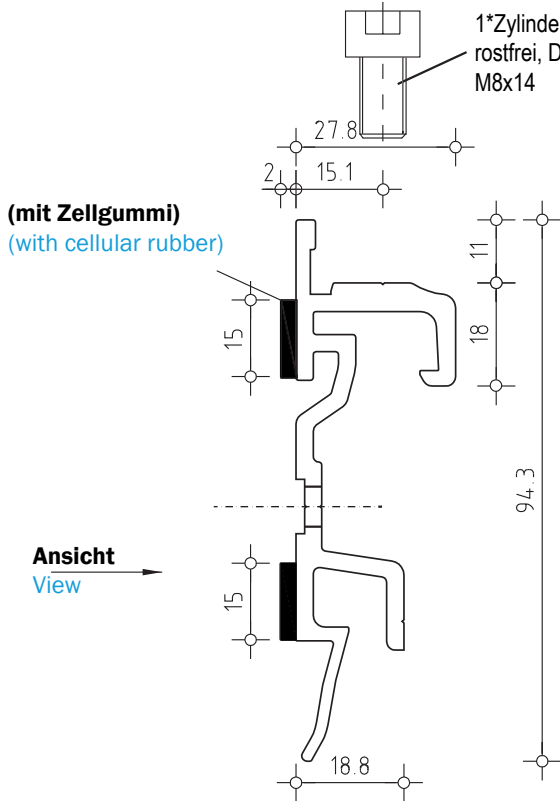
B = 60 mm: Art. 28861

B = 80 mm: Art. 28881



Agraffe ATK 103 EE20 incl. Migrationsbohrung z.B. für Keil 6-kant

Clasp ATK 103 EE20 incl. migration drill holl e.g. for Keil hexagonal



mit Zellgummi
with cellular rubber

Draufsicht: Agraffe, justierbar
Top view: clasp, adjustable

B = 36 mm: Art. 23211
B = 60 mm: Art. 23213
B = 80 mm: Art. 23215

Draufsicht: Agraffe, starr
Top view: clasp, rigid

B = 36 mm: Art. 23212
B = 60 mm: Art. 23214
B = 80 mm: Art. 23216

ohne Zellgummi
without cellular rubber

Draufsicht: Agraffe, justierbar
Top view: clasp, adjustable

B = 36 mm: Art. 23201
B = 60 mm: Art. 23203
B = 80 mm: Art. 23205

Draufsicht: Agraffe, starr
Top view: clasp, rigid

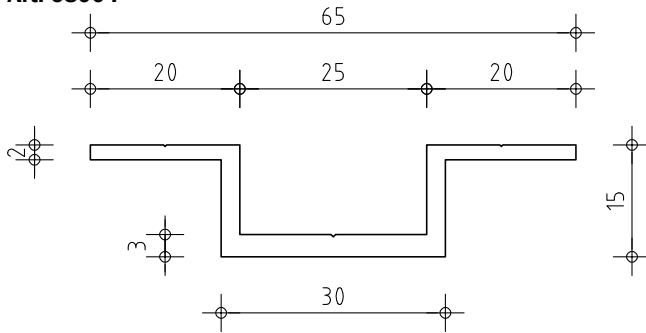
B = 36 mm: Art. 23202
B = 60 mm: Art. 23204
B = 80 mm: Art. 23206

Andere Agraffenbreiten, Langagraffen und weitere Langlochungen (7 x 19): auf Anfrage
other widths of the clasps, long clasps and additional longformed holes (7 x 19): on demand

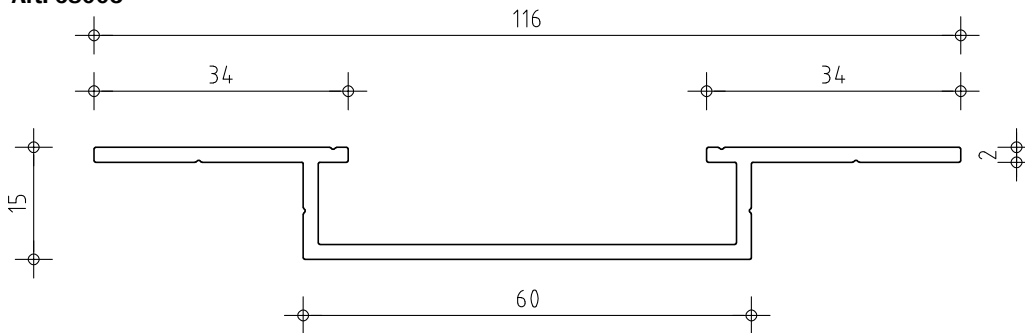
Tragprofile

Sections

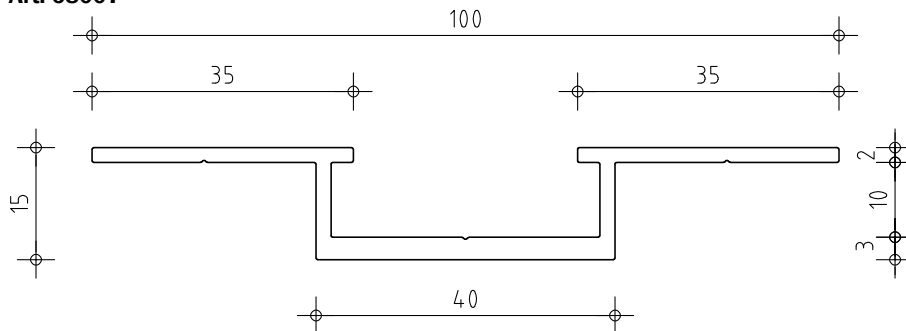
ATK 103 V
Hutprofil 65/30/15
Hat section 65/30/15
Art. 68004



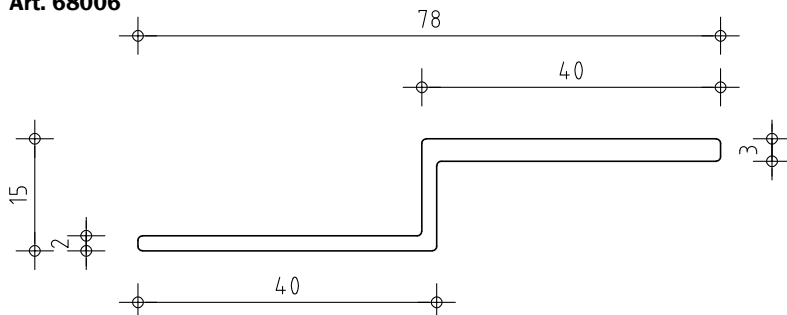
ATK 103 V1
Hutprofil 116/60/15
Hat section 116/60/15
Art. 68005



ATK 103 V2
Hutprofil 100/40/15
Hat section 100/40/15
Art. 68007



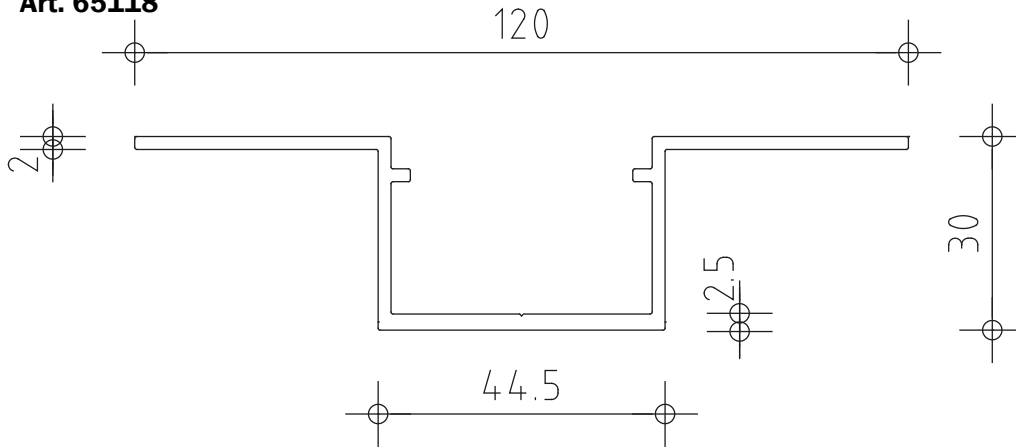
Z-profil 40/15/40
Z-section 40/15/40
Art. 68006



Tragprofile

Sections

Hutprofil 120/30
Hat section 120/30
Art. 65118



Zubehörteile

Accessories

BWM-Spezialniet SNA 5x12 K 14

BWM-Special rivet SNA 5x12 K 14

Art. 51214

